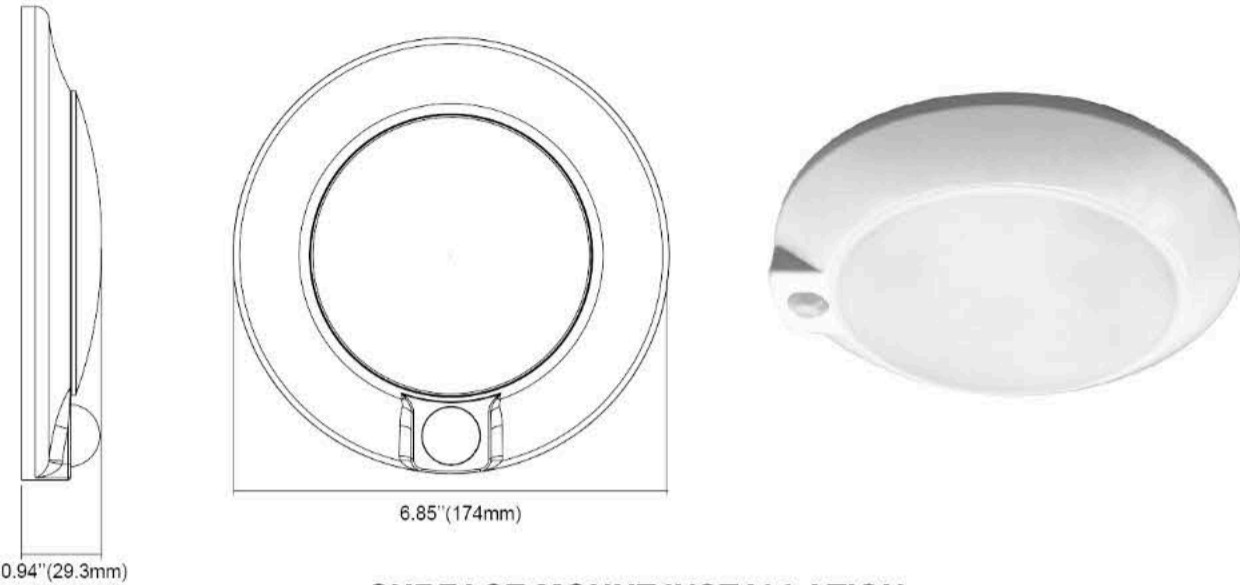


# 5" Round LED Closet Light with Motion Sensor



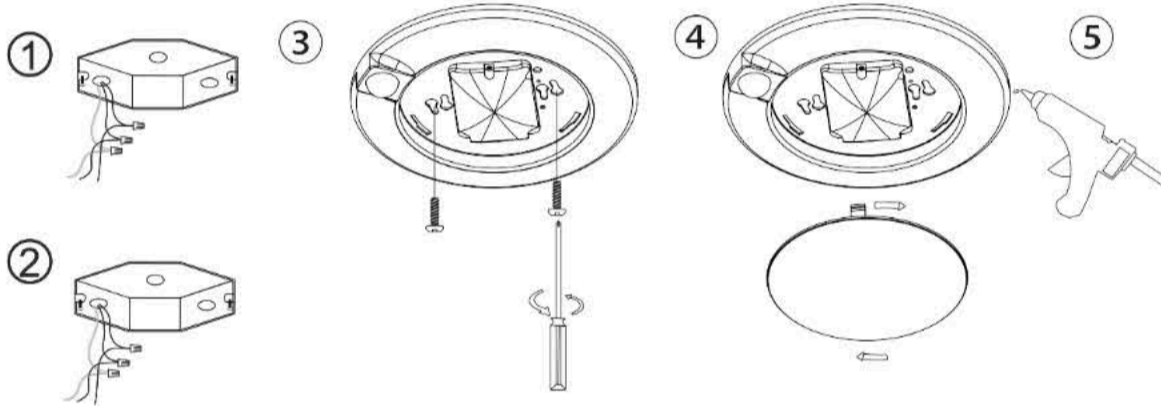
LED Closet Light provides surface mount light for new construction applications. Unit fits most 4" junction boxes. It also is suitable for use in dry, damp or wet locations.



**Technical Specifications**  
 Voltage: 120v, 60Hz ac operation.  
 Wattage: 10W  
 Lumens: 600 lumens, CRI90+,  
 Diffuser: Translucent White PC Opal Diffuser.  
 Hardware: All mounting screws and wire connectors.  
 Tools needed: Screw Driver  
 Warranty: Five year, limited warranty.

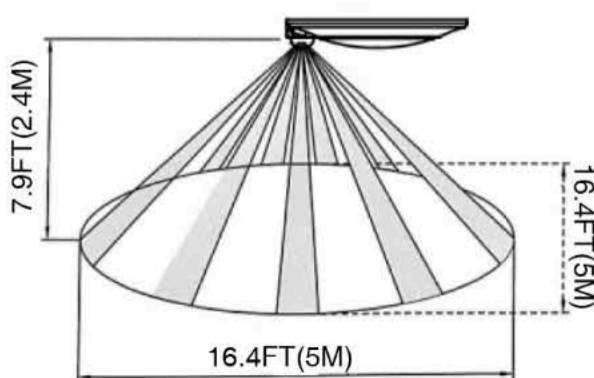
**WARNING: For your safety read and understand instructions completely before starting installation. Before wiring to power supply, turn off electricity at the fuse or circuit breaker box.**

## SURFACE MOUNT INSTALLATION

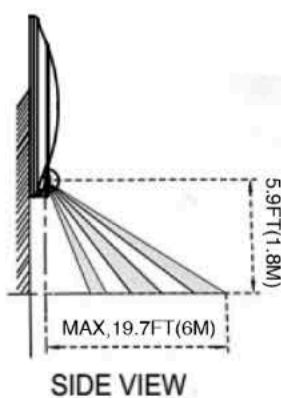


- Step 1)** Prior to installation, please install two screws (furnished) into the junction box. Do Not drive screws completely to the end of the junction box.
- Step 2)** Connect supply wires to wires in fixture wiring box with proper size wire nuts or push wires into "push-in" connector. Connect white to white, black to black, and green or bare copper wire to bare copper wire.
- Step 3)** With a Phillips screwdriver, attach the disk light tightly to the j-box.
- Step 4)** Complete the installation by twisting the diffuser on the disk light aluminum enclosure and lock the diffuser in place.
- Step 5)** For wet location applications, seal the edge of the Click and ceiling surface with waterproof silicone (Not provided).

## Sensor Detection Range:



Ceiling Mount sensor Detection Range



Wall Mount sensor Detection Range



## ! WARNING

**Risk of Fire**  
 Supply conductors (power wires) connecting the fixture must be rated minimum 90°C. If uncertain, consult an electrician.

**Risk of Electric Shock**  
 Disconnect power at fuse or circuit breaker before installing or servicing.

**Risk of Fire/Electric Shock**  
 If not qualified, consult an electrician.

## ! ADVERTENCIA

**Risque d'incendie**  
 Les câbles d'alimentation (câbles de distribution d'énergie) reliés à la lampe doivent pouvoir supporter des températures d'au moins 90°C. Si vous n'êtes pas sûr, consultez un électricien.

**Risque de choc électrique**  
 Débranchez le courant au niveau de la boîte à fusibles ou du disjoncteur avant de procéder à l'installation ou à l'entretien.

**Risque de choc électrique**  
 Débranchez le courant au niveau de la boîte à fusibles ou du disjoncteur avant de procéder à l'installation ou à l'entretien.

**ADVERTENCIA:** Por su propia seguridad, lea cuidadosamente y entienda las instrucciones antes de iniciar la instalación. Antes de conectar la lámpara a la fuente eléctrica, desconecte dicha fuente desde la caja de fusibles o bajando la palanca principal.