

ES-FSCOBWW-24-IP20

COB LED Tape Light 24V 3W/ft 8mm CRI90+ IP20

Project: _____

Location: _____

Model #: _____ Qty: _____

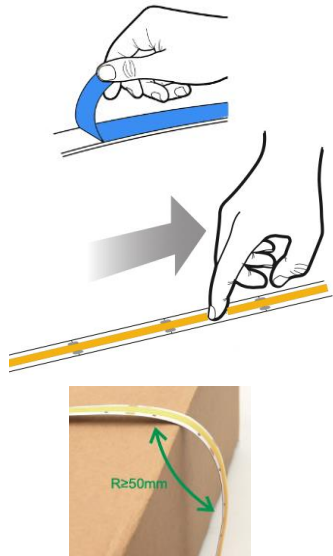
Notes: _____

DESCRIPTION

- High Quality COB LED flexible strip 24V DC for dry locations
- Seamless linear light - no diffused cover needed
- No hotspots and with CRI 90+ for vibrant colors
- Reinforced design for stable performance when bending & twisting
- 3 oz copper PCB and real gold wires for superb light maintenance
- Wires on both ends, options of 16ft and 100 ft reels
- Double sided adhesive 3M tape

INSTALLATION INSTRUCTIONS

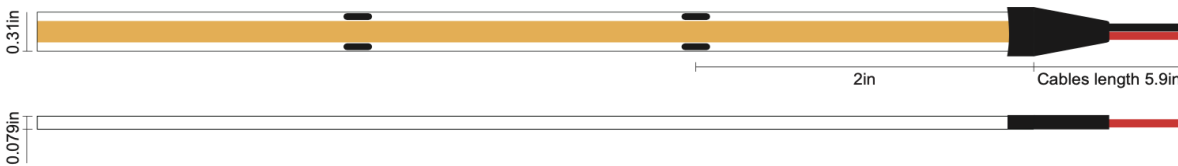
1. Remove backing plastic to reveal adhesive tape
2. Press LED tape firmly onto clean smooth surface that adsorbs heat, such as metal or glass. Start at one end and gradually move along surface, making sure tape is smooth and not creased
3. Cut on trim marks every 2"
4. Minimum Bending Radius 2"



SPECIFICATION	
Applications	Undercabinet, Cove, Valance, Decorative
Power	3 W/ft
Input	24V DC
Stock CCTs	2700 K 3000 K 4000 K 5000 K
Light output per foot	270 lm 285 lm 312 lm 312 lm
Efficiency	90 lm/W 95 lm/W 104 lm/W 104 lm/W
CRI	90 +
Available Lengths	16 ft or 100 ft roll
Maximum Connection Length	16 ft (5 m)
Width	5/16" (8 mm)
Beam Angle	135°
Dimmable	Yes
LED Operation Type	Constant Voltage
IP Grade	IP 20
Approved Location	Dry Location
Operating Temperature	-13°F (-25°C) to +113°F (+45°C)
Cutable Increment	2" (50 mm)
Minimum Bending Radius	2" (50 mm)
LEDs type	COB
Adhesive Tape Type	3M 300SE
Projected Life	70% Light Output at 50,000 Hours
Certification	c UL us
Warranty	5 Year Indoor / 3 Year Outdoor

WARNING

LED tape gets hot. Mounting firmly and securely on smooth and thermo conductive surface such as metal or glass is critical for proper thermal management and long life
Not following these instructions voids the warranty



ORDERING GUIDE

example: **ES-FSCOBWW-24-IP20-30K-16FT**

	- CCT (K)	- Length
ES-FSCOBWW-24-IP20	-27K	-16FT
	-30K	-100FT
	-40K	
	-50K	



In stock 16ft and 100 ft reels

Lotus LED Lights USA

250 H Street # 301, Blaine WA 98230 tel 360-200-5500
 Hainesport NJ, Naples FL, Vancouver WA

www.LotusLEDLights.com

mailing addresses
 warehouses

Lotus LED Lights CANADA

1080 Cliveden Ave # 6, Delta BC V3M 6J6 tel 604-538-3090
 Delta BC & Mississauga ON