



ES-FS2835C-112-IP20

Full Spectrum CRI97+ LED Tape 24V 4.4W/ft 10mm IP20

Project: _____

Location: _____

Model #: _____ Qty: _____

Notes: _____

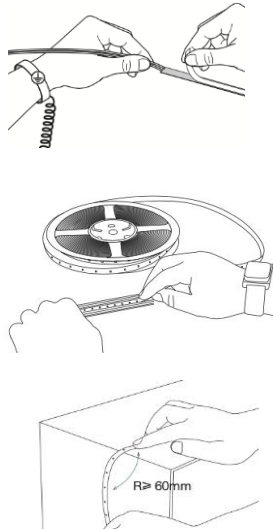
DESCRIPTION

Full Spectrum High Efficiency LED tape

- Natural and vivid color rendering closely matching natural light
- CRI > 97, R1-R15 > 90, no UV light and no low blue wavelengths
- Reinforced design for stable performance when bending & twisting
- 3 oz copper PCB and real gold wires for superb light maintenance
- Wires on both ends, options of 16ft and 100 ft reels
- Double sided adhesive 3M tape

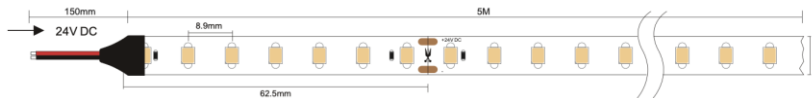
INSTALLATION INSTRUCTIONS

1. Remove backing plastic to reveal adhesive tape
2. Press LED tape firmly onto clean smooth surface that adsorbs heat, such as metal or glass. Start at one end and gradually move along surface, making sure tape is smooth and not creased
3. Cut on trim marks every 2 3/8"
4. Minimum Bending Radius 2 3/8"



WARNING

LED tape gets hot. Mounting firmly and securely on smooth and thermo conductive surface such as metal or glass is critical for proper thermal management and long life
Not following these instructions voids the warranty



SPECIFICATION	
Applications	Indoor linear light installations with superb light quality
Power	4.4 W/ft (14.4 W/m)
Input	24V DC
Stock CCTs	2700 K 3000 K 4000 K 5000 K
Light output per meter	1324 lm 1397 lm 1526 lm 1555 lm
Efficiency	92 lm/W 97 lm/W 106 lm/W 108 lm/W
CRI	97 +
Available Lengths	16 ft or 100 ft roll
Maximum Connection Length	16 ft (5 m)
Width	3/8" (10 mm)
Beam Angle	115°
Dimmable	Yes
LED Operation Type	Constant Voltage
IP Grade	IP 20
Approved Location	Dry Location
Operating Temperature	-13°F (-25°C) to +113°F (+45°C)
Cuttable Increment	2 3/8" (61 mm)
Minimum Bending Radius	2 3/8" (61 mm)
LEDs density	112 LEDs / meter
LEDs type	SMD2835
Adhesive Tape Type	3M 300SE
Projected Life	70% Light Output at 50,000 Hours
Certification	c UL us
Warranty	5 Year Indoor / 3 Year Outdoor

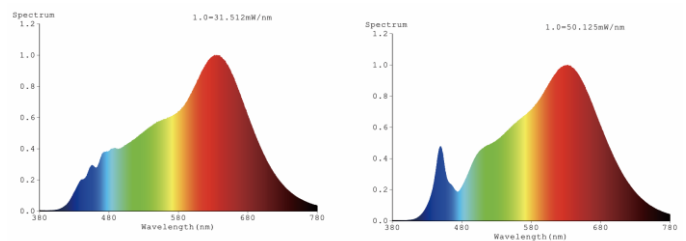
ORDERING GUIDE

example: **ES-FS2835C-112-24-IP20-30K-16FT**

	- CCT (K)	- Length
ES-FS2835C-112-IP20	-27K	-16FT
	-30K	-100FT
	-40K	
	-50K	

In stock 16ft and 100 ft reels

Comparison Full Spectrum vs regular CRI97+ wavelengths



Lotus LED Lights USA

250 H Street # 301, Blaine WA 98230 tel 360-200-5500
 Hainesport NJ, Naples FL, Vancouver WA

www.LotusLEDLights.com

mailing addresses
 warehouses

Lotus LED Lights CANADA

1080 Cliveden Ave # 6, Delta BC V3M 6J6 tel 604-538-3090
 Delta BC & Mississauga ON