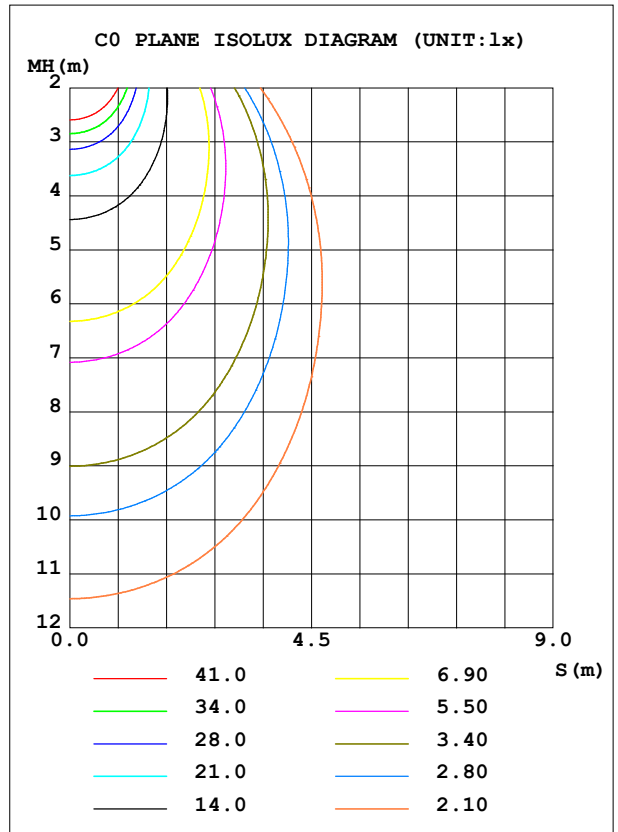
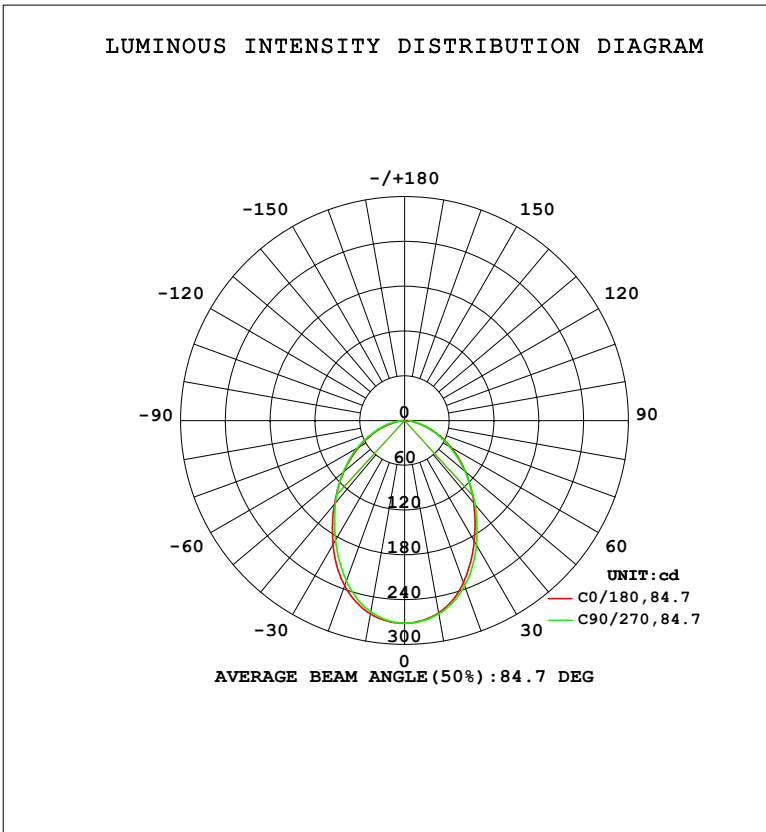


**LUMINAIRE PHOTOMETRIC TEST REPORT**

Test:U:119.88V I:0.1265A P:14.481W PF:0.9545 Freq:59.98Hz		
UTHDi:0.00% ITHDi:0.00% KDisp:0 Lamp Flux:573.606x1 lm		
NAME: OD-5-1000L-5CCT-WH	TYPE:	WEIGHT:
SPEC.: 2700K 90	DIM.:	SERIAL No.:
MFR.:	SUR.:	Shielding Angle:

DATA OF LAMP		PHOTOMETRIC DATA				Eff: 39.61 lm/W
MODEL		I <sub>max</sub> (cd)	271.8	S/MH (C0/180)		1.09
NOMINAL POWER (W)	15	LOR (%)	100.0	S/MH (C90/270)		1.05
RATED VOLTAGE (V)	120	TOTAL FLUX (lm)	573.61	η UP, DN (C0-180)		0.0, 50.5
NOMINAL FLUX (lm)	573.606	CIE CLASS	DIRECT	η UP, DN (C180-360)		0.0, 49.5
LAMPS INSIDE	1	η up (%)	0.0	CIBSE SHR NOM		1.25
TEST VOLTAGE (V)	120	η down (%)	100.0	CIBSE SHR MAX		1.25



C Range: 0 - 360DEG  
 C Interval: 22.5DEG  
 Test Speed: HIGH  
 Temperature: 25.3 °C  
 Operators:  
 Test Date: 2023-01-05

γ Range: 0 - 90DEG  
 γ Interval: 1.0DEG  
 Test System: EVERFINE GO-SPEX500\_V1 SYSTEM V2.00.460  
 Humidity: 65.0%  
 Test Distance: 3.090m [K=1.0000]  
 Remarks:

**ZONAL FLUX DIAGRAM**

ZONAL FLUX DIAGRAM:

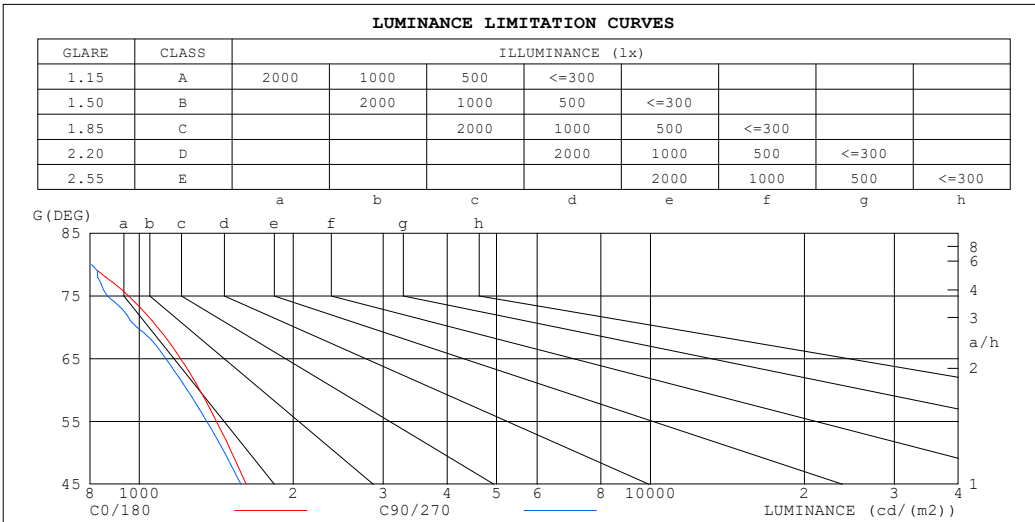
$\gamma$	C0	C45	C90	C135	C180	C225	C270	C315	$\gamma$	$\Phi$ zone	$\Phi$ total	%lum,lamp
10	261.7	261.5	262.9	265.1	263.2	261.9	260.4	259.6	0- 10	25.48	25.48	4.44,4.44
20	230.9	237.2	235.5	239.4	235.5	237.9	228.6	227.2	10- 20	70.40	95.88	16.7,16.7
30	186.7	201.7	192.5	198.2	192.0	200.3	185.6	184.0	20- 30	98.54	194.4	33.9,33.9
40	144.3	160.1	146.9	152.9	146.7	156.2	144.3	141.8	30- 40	106.5	300.9	52.5,52.5
50	106.6	117.3	105.4	111.3	106.3	114.4	107.6	104.1	40- 50	99.05	400.0	69.7,69.7
60	71.82	78.26	69.22	74.06	70.19	77.08	73.06	70.58	50- 60	80.95	481.0	83.8,83.8
70	40.62	43.45	37.76	40.75	38.40	43.96	41.73	40.96	60- 70	55.81	536.8	93.6,93.6
80	15.12	14.83	15.62	15.98	12.39	15.97	17.34	16.29	70- 80	28.85	565.6	98.6,98.6
90	1.521	1.906	6.545	4.946	1.881	1.789	3.515	3.933	80- 90	7.989	573.6	100,100
100									90-100			
110									100-110			
120									110-120			
130									120-130			
140									130-140			
150									140-150			
160									150-160			
170									160-170			
180									170-180			
DEG	LUMINOUS INTENSITY:cd									UNIT:lm		

C Range: 0 - 360DEG  
 C Interval: 22.5DEG  
 Test Speed: HIGH  
 Temperature:25.3°C  
 Operators:  
 Test Date:2023-01-05

$\gamma$  Range: 0 - 90DEG  
 $\gamma$  Interval: 1.0DEG  
 Test System:EVERFINE GO-SPEX500\_V1 SYSTEM V2.00.460  
 Humidity:65.0%  
 Test Distance:3.090m [K=1.0000]  
 Remarks:

**LUMINANCE LIMITATION CURVES**

Test:U:119.88V I:0.1265A P:14.481W PF:0.9545 Freq:59.98Hz UTHDi:0.00% ITHDi:0.00% KDisp:0 Lamp Flux:573.606x1 lm		
NAME: OD-5-1000L-5CCT-WH	TYPE:	WEIGHT:
SPEC.: 2700K 90	DIM.:	SERIAL No.:
MFR.:	SUR.:	Shielding Angle:



LUMINANCE cd/(m2)		
G (DEG)	C0/180	C90/270
85	615	846
80	796	806
75	953	866
70	1086	990
65	1204	1126
60	1313	1241
55	1415	1355
50	1517	1470
45	1618	1580

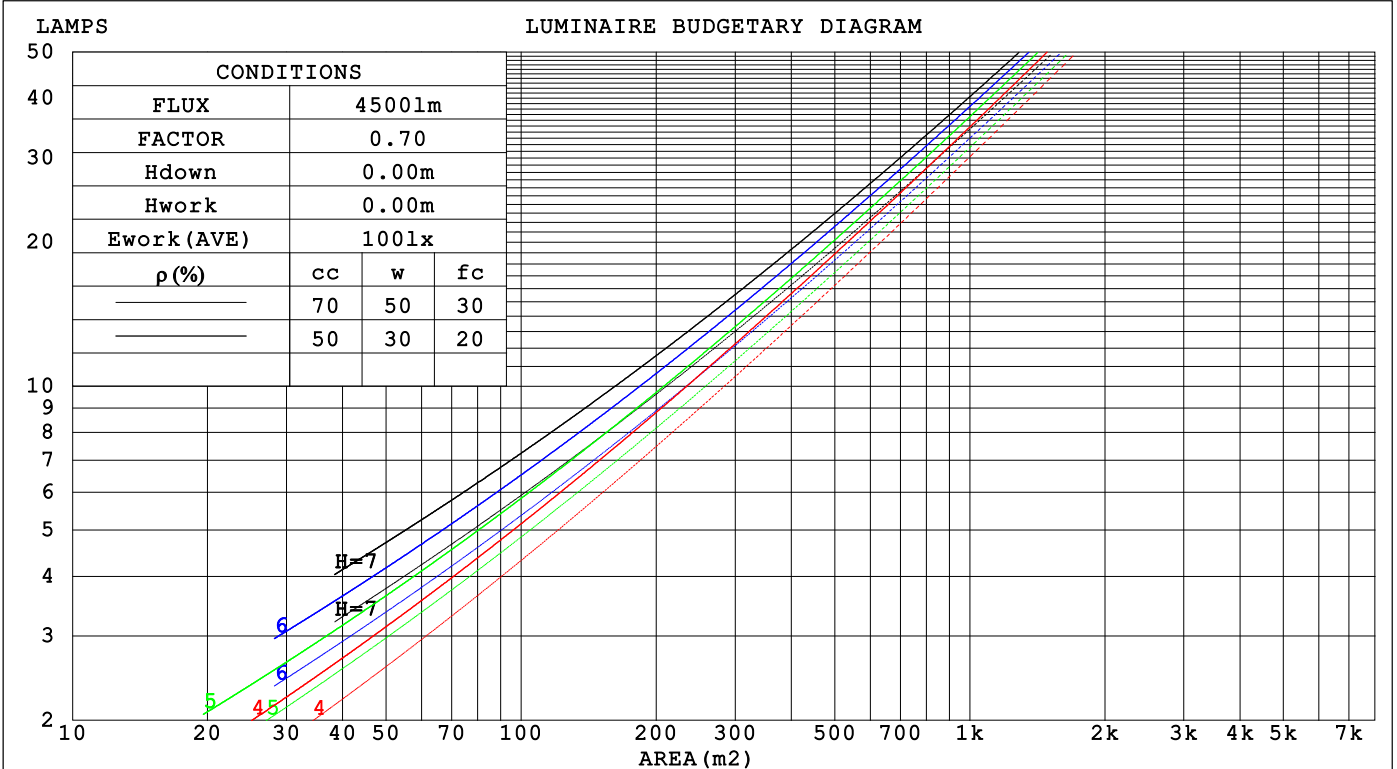
C Range: 0 - 360DEG  
 C Interval: 22.5DEG  
 Test Speed: HIGH  
 Temperature: 25.3 °C  
 Operators:  
 Test Date: 2023-01-05

γ Range: 0 - 90DEG  
 γ Interval: 1.0DEG  
 Test System: EVERFINE GO-SPEX500\_V1 SYSTEM V2.00.460  
 Humidity: 65.0%  
 Test Distance: 3.090m [K=1.0000]  
 Remarks:

**CU AND LUMINAIRE BUDGETARY ESTIMATE DIAGRAM**

Test:U:119.88V I:0.1265A P:14.481W PF:0.9545 Freq:59.98Hz		
UTHdi:0.00% ITHdi:0.00% KDisp:0 Lamp Flux:573.606x1 lm		
NAME: OD-5-1000L-5CCT-WH	TYPE:	WEIGHT:
SPEC.: 2700K 90	DIM.:	SERIAL No.:
MFR.:	SUR.:	Shielding Angle:

$\rho_{cc}$	80%			70%			50%			30%			10%			0
$\rho_w$	50%	30%	10%	50%	30%	10%	50%	30%	10%	50%	30%	10%	50%	30%	10%	0
$\rho_{fc}$	20%			20%			20%			20%			20%			0
RCR	RCR:Room Cavity Ratio Coefficients of Utilization(CU)															
0.0	1.19	1.19	1.19	1.16	1.16	1.16	1.11	1.11	1.11	1.06	1.06	1.06	1.02	1.02	1.02	1.00
1.0	1.05	1.01	.98	1.03	.00	.96	.99	.96	.93	.95	.93	.90	.91	.90	.88	.86
2.0	.93	.87	.81	.91	.85	.80	.88	.83	.79	.84	.80	.77	.81	.78	.75	.73
3.0	.83	.75	.69	.81	.74	.68	.78	.72	.67	.75	.70	.66	.73	.69	.65	.63
4.0	.74	.66	.59	.73	.65	.59	.70	.63	.58	.68	.62	.57	.66	.61	.57	.55
5.0	.67	.58	.52	.65	.58	.52	.63	.56	.51	.61	.55	.50	.60	.54	.50	.48
6.0	.60	.52	.46	.59	.51	.46	.58	.51	.45	.56	.50	.45	.54	.49	.44	.43
7.0	.55	.47	.41	.54	.46	.41	.53	.46	.40	.51	.45	.40	.50	.44	.40	.38
8.0	.51	.42	.37	.50	.42	.37	.49	.42	.37	.47	.41	.36	.46	.40	.36	.34
9.0	.47	.39	.33	.46	.39	.33	.45	.38	.33	.44	.38	.33	.43	.37	.33	.31
10.0	.43	.36	.31	.43	.35	.31	.42	.35	.30	.41	.35	.30	.40	.34	.30	.28



C Range: 0 - 360DEG  
 C Interval: 22.5DEG  
 Test Speed: HIGH  
 Temperature:25.3°C  
 Operators:  
 Test Date:2023-01-05

$\gamma$  Range: 0 - 90DEG  
 $\gamma$  Interval: 1.0DEG  
 Test System:EVERFINE GO-SPEX500\_V1 SYSTEM V2.00.460  
 Humidity:65.0%  
 Test Distance:3.090m [K=1.0000]  
 Remarks:

**WEC AND CCEC**

Test:U:119.88V I:0.1265A P:14.481W PF:0.9545 Freq:59.98Hz		
UTHDi:0.00% ITHDi:0.00% KDisp:0 Lamp Flux:573.606x1 lm		
NAME: OD-5-1000L-5CCT-WH	TYPE:	WEIGHT:
SPEC.: 2700K 90	DIM.:	SERIAL No.:
MFR.:	SUR.:	Shielding Angle:

$\rho_{CC}$	80%			70%			50%			30%			10%			0
$\rho_w$	50%	30%	10%	50%	30%	10%	50%	30%	10%	50%	30%	10%	50%	30%	10%	0
$\rho_{fc}$	20%			20%			20%			20%			20%			0
RCR	RCR:Room Cavity Ratio						Wall Exitance Coefficients(WEC)									
0.0																
1.0	.282	.160	.051	.275	.157	.050	.262	.150	.048	.250	.144	.046	.238	.138	.045	
2.0	.267	.147	.045	.261	.144	.044	.250	.139	.043	.239	.134	.042	.229	.130	.041	
3.0	.249	.133	.040	.244	.131	.039	.234	.127	.039	.225	.123	.038	.216	.120	.037	
4.0	.232	.120	.035	.227	.119	.035	.218	.116	.035	.210	.113	.034	.202	.110	.033	
5.0	.216	.110	.032	.211	.109	.032	.204	.106	.031	.196	.104	.031	.189	.101	.030	
6.0	.201	.101	.029	.197	.100	.029	.190	.098	.028	.184	.095	.028	.178	.093	.028	
7.0	.188	.093	.026	.185	.092	.026	.178	.090	.026	.173	.088	.026	.167	.087	.025	
8.0	.176	.086	.024	.173	.085	.024	.168	.084	.024	.162	.082	.024	.157	.081	.024	
9.0	.166	.080	.022	.163	.080	.022	.158	.078	.022	.153	.077	.022	.149	.076	.022	
10.0	.156	.075	.021	.154	.074	.021	.149	.073	.021	.145	.072	.020	.141	.071	.020	

$\rho_{CC}$	80%			70%			50%			30%			10%			0
$\rho_w$	50%	30%	10%	50%	30%	10%	50%	30%	10%	50%	30%	10%	50%	30%	10%	0
$\rho_{fc}$	20%			20%			20%			20%			20%			0
RCR	RCR:Room Cavity Ratio						Ceiling Cavity Exitance Coefficients(CCEC)									
0.0	.190	.190	.190	.163	.163	.163	.111	.111	.111	.064	.064	.064	.020	.020	.020	
1.0	.178	.156	.137	.153	.134	.118	.104	.092	.081	.060	.053	.047	.019	.017	.015	
2.0	.169	.132	.101	.145	.114	.087	.099	.079	.061	.057	.046	.036	.018	.015	.012	
3.0	.161	.114	.077	.138	.098	.067	.094	.068	.047	.055	.040	.028	.018	.013	.009	
4.0	.153	.101	.061	.131	.087	.053	.090	.061	.037	.052	.035	.022	.017	.012	.007	
5.0	.145	.090	.049	.125	.078	.043	.086	.054	.030	.050	.032	.018	.016	.010	.006	
6.0	.138	.081	.041	.119	.071	.036	.082	.049	.025	.047	.029	.015	.015	.010	.005	
7.0	.131	.074	.035	.113	.065	.030	.078	.045	.021	.045	.027	.013	.015	.009	.004	
8.0	.125	.069	.030	.108	.060	.026	.074	.042	.018	.043	.025	.011	.014	.008	.004	
9.0	.119	.064	.026	.103	.055	.023	.071	.039	.016	.041	.023	.010	.013	.008	.003	
10.0	.114	.059	.023	.098	.052	.020	.068	.036	.014	.040	.021	.009	.013	.007	.003	

C Range: 0 - 360DEG  
 C Interval: 22.5DEG  
 Test Speed: HIGH  
 Temperature:25.3°C  
 Operators:  
 Test Date:2023-01-05

$\gamma$  Range: 0 - 90DEG  
 $\gamma$  Interval: 1.0DEG  
 Test System:EVERFINE GO-SPEX500\_V1 SYSTEM V2.00.460  
 Humidity:65.0%  
 Test Distance:3.090m [K=1.0000]  
 Remarks:

**UGR(Unified Glare Rating) Table**

Test:U:119.88V I:0.1265A P:14.481W PF:0.9545 Freq:59.98Hz UTHDi:0.00% ITHDi:0.00% KDisp:0 Lamp Flux:573.606x1 lm										
NAME: OD-5-1000L-5CCT-WH					TYPE:			WEIGHT:		
SPEC.: 2700K 90					DIM.:			SERIAL No.:		
MFR.:					SUR.:			Shielding Angle:		
ceiling/cavity	0.7	0.7	0.5	0.5	0.3	0.7	0.7	0.5	0.5	0.3
walls	0.5	0.3	0.5	0.3	0.3	0.5	0.3	0.5	0.3	0.3
working plane	0.2	0.2	0.2	0.2	0.2	0.2	0.2	0.2	0.2	0.2
Room dimensions	Viewed crosswise					Viewed endwise				
x = 2H y = 2H	15.7	17.1	15.9	17.3	17.5	15.6	17.1	15.9	17.3	17.5
3H	16.8	18.2	17.1	18.4	18.6	16.7	18.0	17.0	18.3	18.5
4H	17.3	18.5	17.6	18.8	19.0	17.1	18.4	17.4	18.6	18.8
6H	17.6	18.7	17.9	19.0	19.3	17.4	18.5	17.7	18.8	19.1
8H	17.6	18.8	18.0	19.0	19.3	17.5	18.6	17.8	18.9	19.1
12H	17.7	18.7	18.0	19.0	19.3	17.5	18.6	17.9	18.9	19.2
4H 2H	16.2	17.5	16.5	17.7	18.0	16.2	17.5	16.5	17.7	17.9
3H	17.6	18.7	17.9	19.0	19.3	17.5	18.6	17.8	18.8	19.1
4H	18.1	19.1	18.5	19.4	19.8	18.0	18.9	18.3	19.3	19.6
6H	18.5	19.4	18.9	19.7	20.1	18.3	19.2	18.7	19.5	19.9
8H	18.6	19.4	19.0	19.8	20.2	18.4	19.2	18.8	19.6	20.0
12H	18.7	19.4	19.1	19.8	20.2	18.5	19.3	18.9	19.6	20.0
8H 4H	18.3	19.1	18.7	19.5	19.9	18.2	19.0	18.6	19.3	19.7
6H	18.8	19.5	19.2	19.9	20.3	18.6	19.3	19.0	19.7	20.1
8H	19.0	19.6	19.4	20.0	20.4	18.8	19.4	19.2	19.8	20.2
12H	19.1	19.6	19.6	20.0	20.5	18.9	19.4	19.4	19.9	20.3
12H 4H	18.3	19.0	18.7	19.4	19.8	18.1	18.9	18.6	19.3	19.7
6H	18.8	19.4	19.3	19.8	20.3	18.6	19.2	19.1	19.6	20.1
8H	19.0	19.5	19.5	20.0	20.5	18.8	19.3	19.3	19.8	20.2
Variations with the observer position at spacings(CIE Pub.117):										
S = 1.0H	+ 0.2 / - 0.3					+ 0.3 / - 0.3				
1.5H	+ 0.2 / - 0.3					+ 0.2 / - 0.4				
2.0H	+ 0.3 / - 0.4					+ 0.3 / - 0.5				

CIE Pub.117, 573.6 lm Total Lamp Luminous Flux Correct (8log(F/F0) = -1.9)  
 Area: 0.111111 m2

C Range: 0 - 360DEG  
 C Interval: 22.5DEG  
 Test Speed: HIGH  
 Temperature:25.3°C  
 Operators:  
 Test Date:2023-01-05

γ Range: 0 - 90DEG  
 γ Interval: 1.0DEG  
 Test System:EVERFINE GO-SPEX500\_V1 SYSTEM V2.00.460  
 Humidity:65.0%  
 Test Distance:3.090m [K=1.0000]  
 Remarks:

**UTILIZATION FACTORS TABLE**

Test:U:119.88V I:0.1265A P:14.481W PF:0.9545 Freq:59.98Hz UTHDi:0.00% ITHDi:0.00% KDisp:0 Lamp Flux:573.606x1 lm		
NAME: OD-5-1000L-5CCT-WH	TYPE:	WEIGHT:
SPEC.: 2700K 90	DIM.:	SERIAL No.:
MFR.:	SUR.:	Shielding Angle:

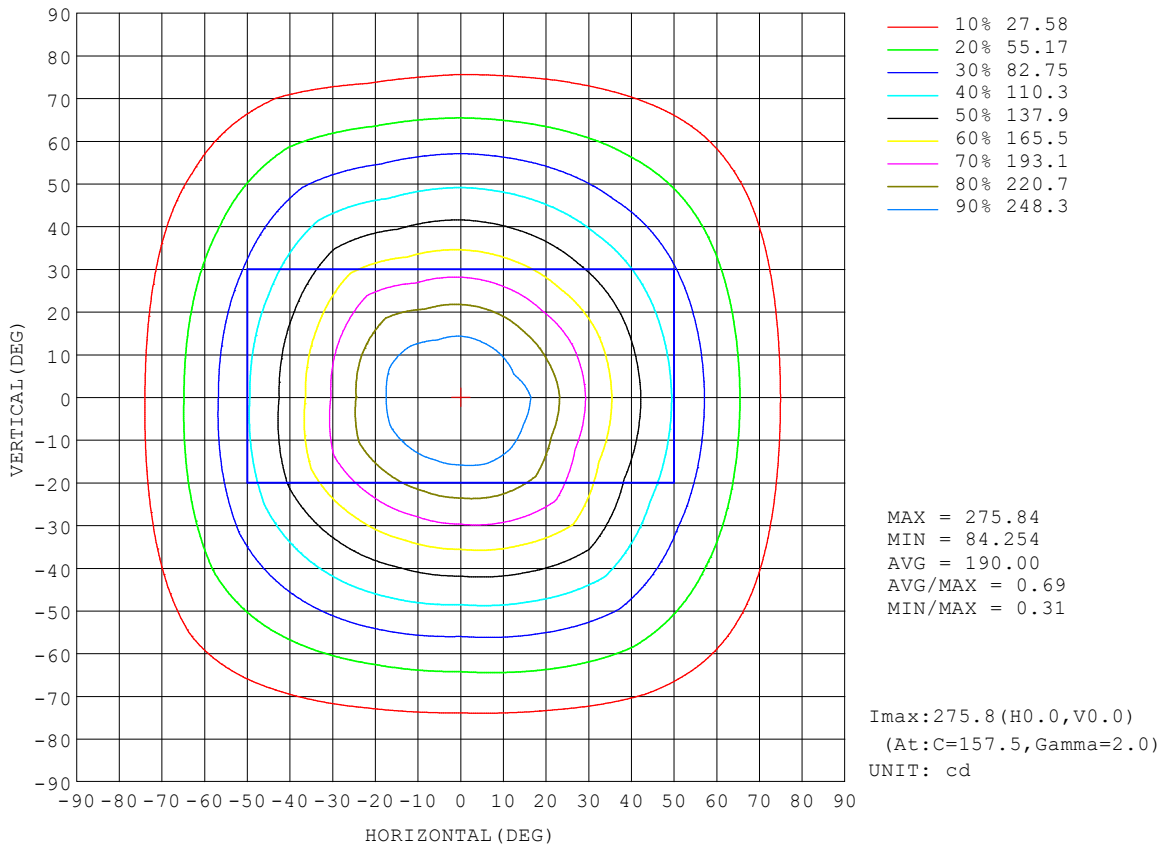
REFLECTANCE										
Ceiling	0.8	0.8	0.8	0.7	0.7	0.7	0.5	0.5	0.5	0
Walls	0.7	0.5	0.3	0.7	0.5	0.3	0.7	0.5	0.3	0
Working plane	0.2	0.2	0.2	0.2	0.2	0.2	0.2	0.2	0.2	0
ROOM INDEX	UTILIZATION FACTORS (PERCENT) $k(RI) \times RCR = 5$									
$k = 0.60$	62	51	45	61	51	45	60	51	45	39
0.80	72	61	55	71	61	54	69	60	54	48
1.00	80	70	63	79	69	63	77	70	62	56
1.25	87	77	71	85	77	70	83	75	70	63
1.50	91	82	76	90	82	76	87	80	75	68
2.00	98	90	84	96	89	83	92	87	82	74
2.50	101	94	89	99	93	88	95	90	86	78
3.00	104	98	93	102	96	92	98	94	90	82
4.00	108	103	98	105	101	97	101	98	94	86
5.00	110	106	102	107	104	100	103	100	97	88
ROOM INDEX	UF(total)									Direct
According to DIN EN 13032-2 2004			Suspended				SHRNOM = 1.25			

C Range: 0 - 360DEG  
 C Interval: 22.5DEG  
 Test Speed: HIGH  
 Temperature: 25.3°C  
 Operators:  
 Test Date: 2023-01-05

$\gamma$  Range: 0 - 90DEG  
 $\gamma$  Interval: 1.0DEG  
 Test System: EVERFINE GO-SPEX500\_V1 SYSTEM V2.00.460  
 Humidity: 65.0%  
 Test Distance: 3.090m [K=1.0000]  
 Remarks:

**ISOCANDELA DIAGRAM**

Test:U:119.88V I:0.1265A P:14.481W PF:0.9545 Freq:59.98Hz UTHDi:0.00% ITHDi:0.00% KDisp:0 Lamp Flux:573.606x1 lm		
NAME: OD-5-1000L-5CCT-WH	TYPE:	WEIGHT:
SPEC.: 2700K 90	DIM.:	SERIAL No.:
MFR.:	SUR.:	Shielding Angle:



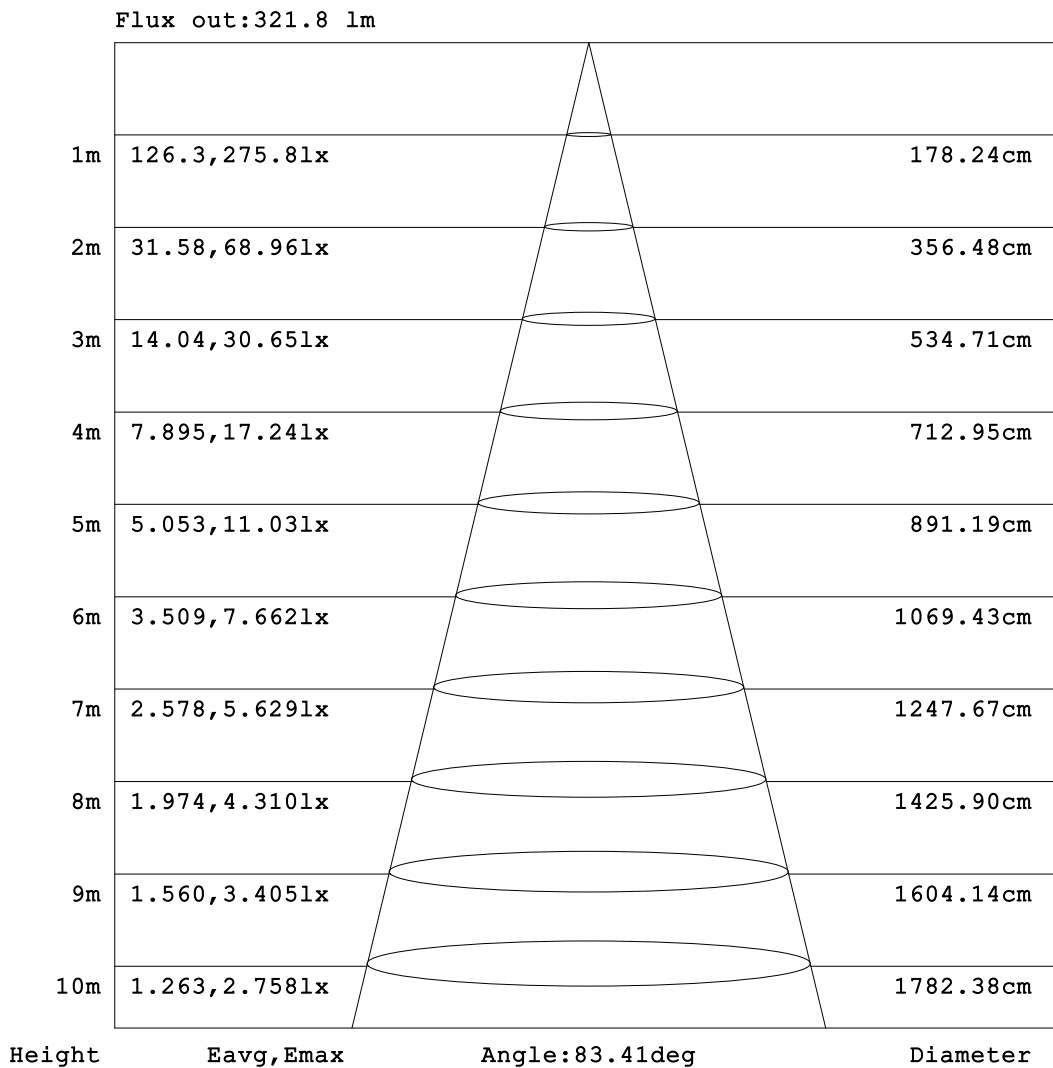
C Range: 0 - 360DEG  
 C Interval: 22.5DEG  
 Test Speed: HIGH  
 Temperature:25.3°C  
 Operators:  
 Test Date:2023-01-05

γ Range: 0 - 90DEG  
 γ Interval: 1.0DEG  
 Test System:EVERFINE GO-SPEX500\_V1 SYSTEM V2.00.460  
 Humidity:65.0%  
 Test Distance:3.090m [K=1.0000]  
 Remarks:



**AAI Figure**

Test:U:119.88V I:0.1265A P:14.481W PF:0.9545 Freq:59.98Hz UTHDi:0.00% ITHDi:0.00% KDisp:0 Lamp Flux:573.606x1 lm		
NAME: OD-5-1000L-5CCT-WH	TYPE:	WEIGHT:
SPEC.: 2700K 90	DIM.:	SERIAL No.:
MFR.:	SUR.:	Shielding Angle:



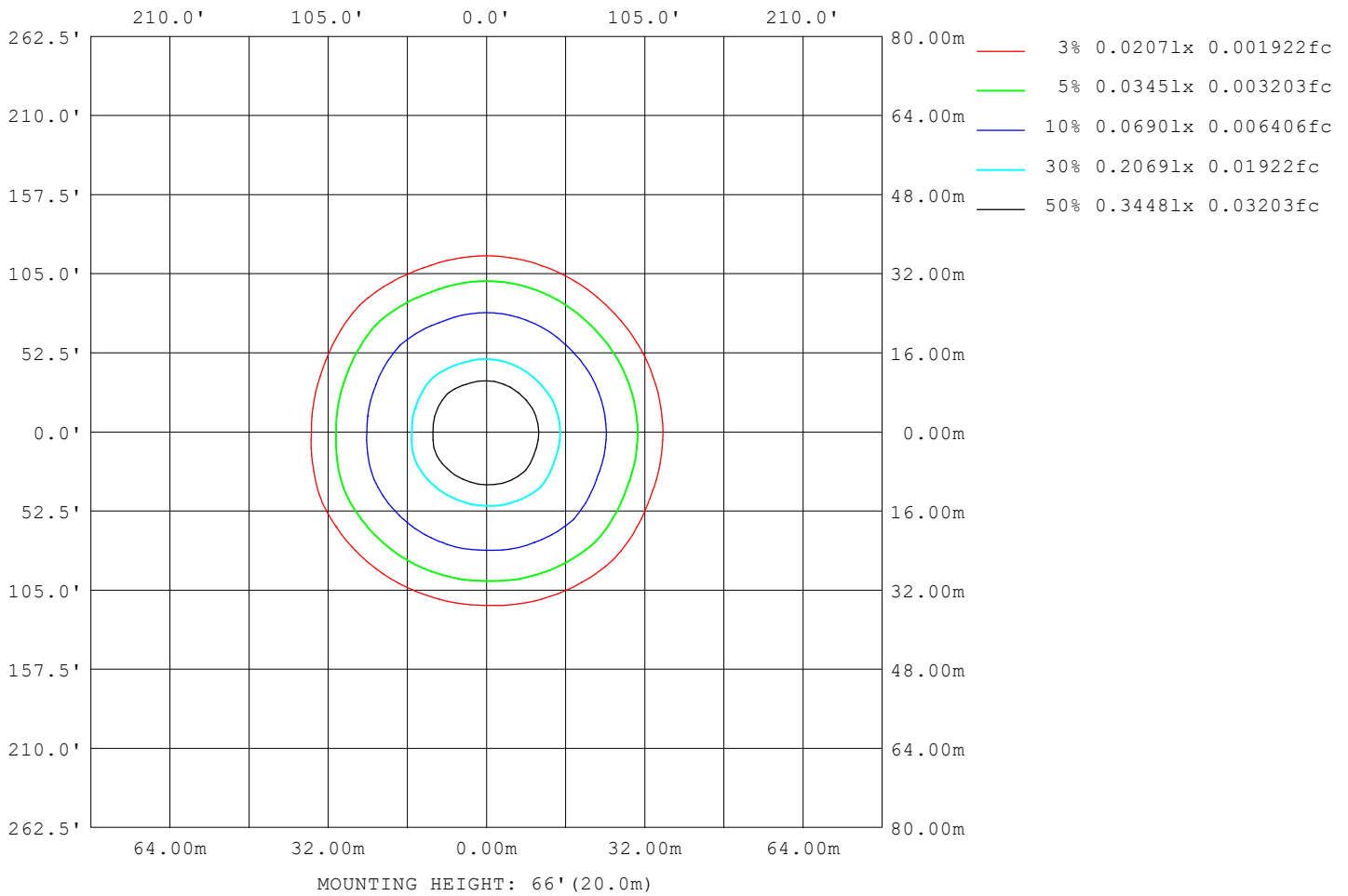
Note: The Curves indicate the illuminated area and the average illumination when the luminaire is at different distance.

C Range: 0 - 360DEG  
 C Interval: 22.5DEG  
 Test Speed: HIGH  
 Temperature: 25.3 °C  
 Operators:  
 Test Date: 2023-01-05

γ Range: 0 - 90DEG  
 γ Interval: 1.0DEG  
 Test System: EVERFINE GO-SPEX500\_V1 SYSTEM V2.00.460  
 Humidity: 65.0%  
 Test Distance: 3.090m [K=1.0000]  
 Remarks:

**ISOLUX DIAGRAM**

Test:U:119.88V I:0.1265A P:14.481W PF:0.9545 Freq:59.98Hz UTHDi:0.00% ITHDi:0.00% KDisp:0 Lamp Flux:573.606x1 lm		
NAME: OD-5-1000L-5CCT-WH	TYPE:	WEIGHT:
SPEC.: 2700K 90	DIM.:	SERIAL No.:
MFR.:	SUR.:	Shielding Angle:



C Range: 0 - 360DEG  
 C Interval: 22.5DEG  
 Test Speed: HIGH  
 Temperature:25.3°C  
 Operators:  
 Test Date:2023-01-05

γ Range: 0 - 90DEG  
 γ Interval: 1.0DEG  
 Test System:EVERFINE GO-SPEX500\_V1 SYSTEM V2.00.460  
 Humidity:65.0%  
 Test Distance:3.090m [K=1.0000]  
 Remarks:

**LED Avg.L Report**

Test:U:119.88V I:0.1265A P:14.481W PF:0.9545 Freq:59.98Hz UTHDi:0.00% ITHDi:0.00% KDisp:0 Lamp Flux:573.606x1 lm		
NAME: OD-5-1000L-5CCT-WH	TYPE:	WEIGHT:
SPEC.: 2700K 90	DIM.:	SERIAL No.:
MFR.:	SUR.:	Shielding Angle:

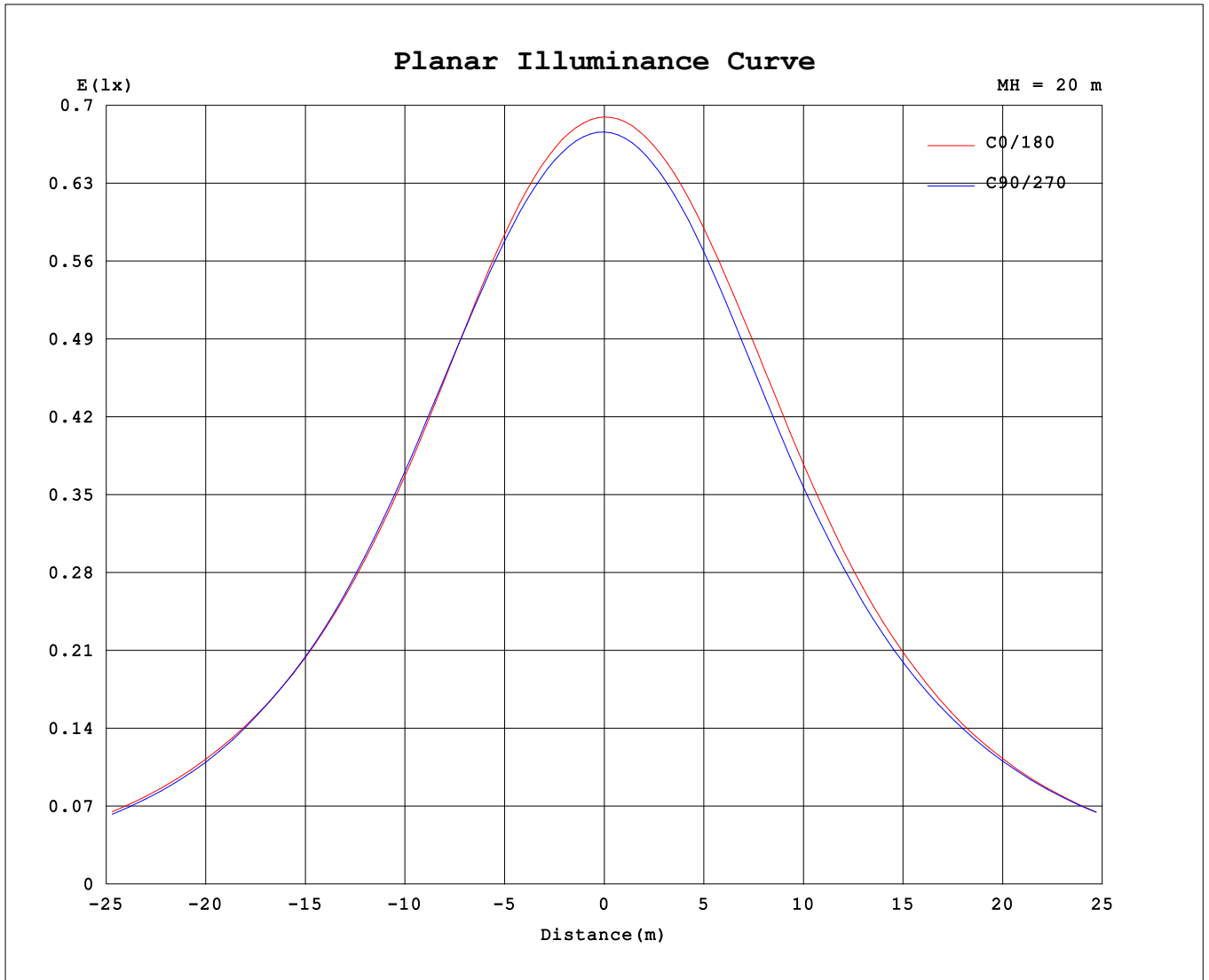
AvgL	cd/m2
L_0~180 (65) av	1165
L_0~180 (75) av	893
L_0~180 (85) av	511
L_90~270 (65) av	1169
L_90~270 (75) av	942
L_90~270 (85) av	838
L_45 (65) av	1231
L_45 (75) av	970
L_45 (85) av	676

Standard: GB/T 29293-2012

C Range: 0 - 360DEG  
 C Interval: 22.5DEG  
 Test Speed: HIGH  
 Temperature:25.3℃  
 Operators:  
 Test Date:2023-01-05

γ Range: 0 - 90DEG  
 γ Interval: 1.0DEG  
 Test System:EVERFINE GO-SPEX500\_V1 SYSTEM V2.00.460  
 Humidity:65.0%  
 Test Distance:3.090m [K=1.0000]  
 Remarks:

**Planar Illuminance Curve**



C Range: 0 - 360DEG  
 C Interval: 22.5DEG  
 Test Speed: HIGH  
 Temperature: 25.3 °C  
 Operators:  
 Test Date: 2023-01-05

γ Range: 0 - 90DEG  
 γ Interval: 1.0DEG  
 Test System: EVERFINE GO-SPEX500\_V1 SYSTEM V2.00.460  
 Humidity: 65.0%  
 Test Distance: 3.090m [K=1.0000]  
 Remarks:

**LUMINOUS DISTRIBUTION INTENSITY DATA**

Test:U:119.88V I:0.1265A P:14.481W PF:0.9545 Freq:59.98Hz UTHDi:0.00% ITHDi:0.00% KDisp:0 Lamp Flux:573.606x1 lm		
NAME: OD-5-1000L-5CCT-WH	TYPE:	WEIGHT:
SPEC.: 2700K 90	DIM.:	SERIAL No.:
MFR.:	SUR.:	Shielding Angle:

Table--1

UNIT: cd

C (DEG) \ γ (DEG)	0	22.5	45	67.5	90	112.5	135	157.5	180	202.5	225	247.5	270	292.5	315	337.5			
0	272	272	272	272	272	272	272	272	272	272	272	272	272	272	272	272			
5	269	268	269	271	270	270	270	271	270	270	269	268	269	268	268	268			
10	262	261	261	265	263	264	265	267	263	264	262	261	260	260	260	259			
15	249	248	251	254	252	253	255	258	252	253	251	248	247	247	246	246			
20	231	230	237	239	236	237	239	244	236	238	238	231	229	229	227	230			
25	209	209	221	220	215	216	220	226	215	218	221	210	207	207	206	211			
30	187	187	202	199	193	193	198	206	192	196	200	188	186	185	184	189			
35	165	165	181	176	169	170	175	183	169	172	178	166	164	163	162	167			
40	144	144	160	153	147	148	153	160	147	150	156	145	144	143	142	146			
45	125	125	139	131	125	127	131	137	126	127	135	125	126	124	122	126			
50	107	106	117	111	105	108	111	116	106	108	114	107	108	107	104	107			
55	88.8	88.7	97.3	92.0	86.7	89.3	92.3	96.0	87.7	88.8	95.3	89.2	90.1	89.0	86.7	89.2			
60	71.8	71.9	78.3	74.0	69.2	70.8	74.1	77.4	70.2	70.9	77.1	72.4	73.1	71.9	70.6	72.2			
65	55.6	56.0	60.1	57.0	53.1	53.5	56.2	60.0	53.8	54.1	60.0	56.2	56.7	55.9	54.9	56.1			
70	40.6	41.0	43.5	41.0	37.8	38.8	40.7	43.8	38.4	38.4	44.0	40.9	41.7	41.8	41.0	41.0			
75	27.0	27.2	28.1	26.2	25.0	25.7	26.6	28.7	24.4	24.2	29.2	27.0	29.2	29.0	27.6	27.0			
80	15.1	15.3	14.8	13.7	15.6	15.1	16.0	15.8	12.4	12.1	16.0	16.0	17.3	17.4	16.3	15.0			
85	5.86	6.08	5.09	5.11	8.22	7.09	7.32	6.44	4.04	3.87	6.21	6.67	8.00	8.25	7.58	5.92			
90	1.52	1.55	1.91	2.39	6.55	5.28	4.95	3.12	1.88	1.91	1.79	2.65	3.52	3.94	3.93	2.31			

C Range: 0 - 360DEG  
 C Interval: 22.5DEG  
 Test Speed: HIGH  
 Temperature:25.3℃  
 Operators:  
 Test Date:2023-01-05

γ Range: 0 - 90DEG  
 γ Interval: 1.0DEG  
 Test System:EVERFINE GO-SPEX500\_V1 SYSTEM V2.00.460  
 Humidity:65.0%  
 Test Distance:3.090m [K=1.0000]  
 Remarks: