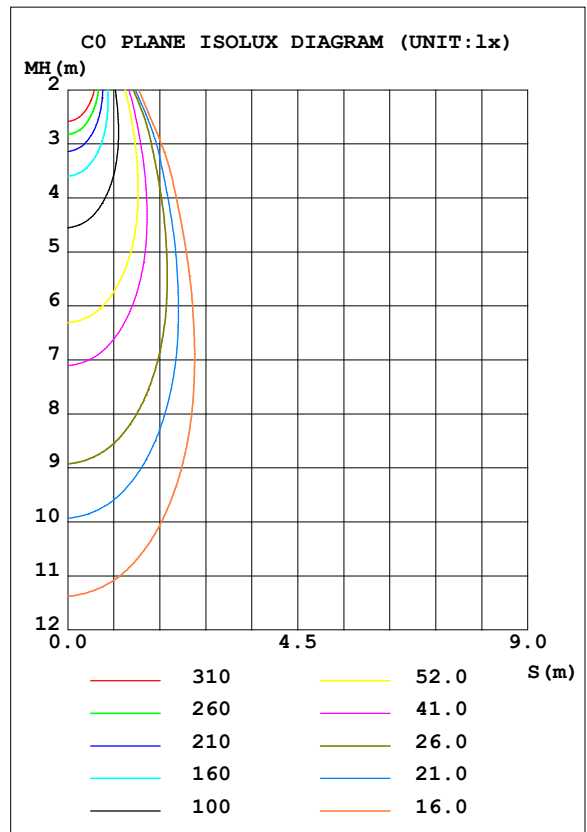
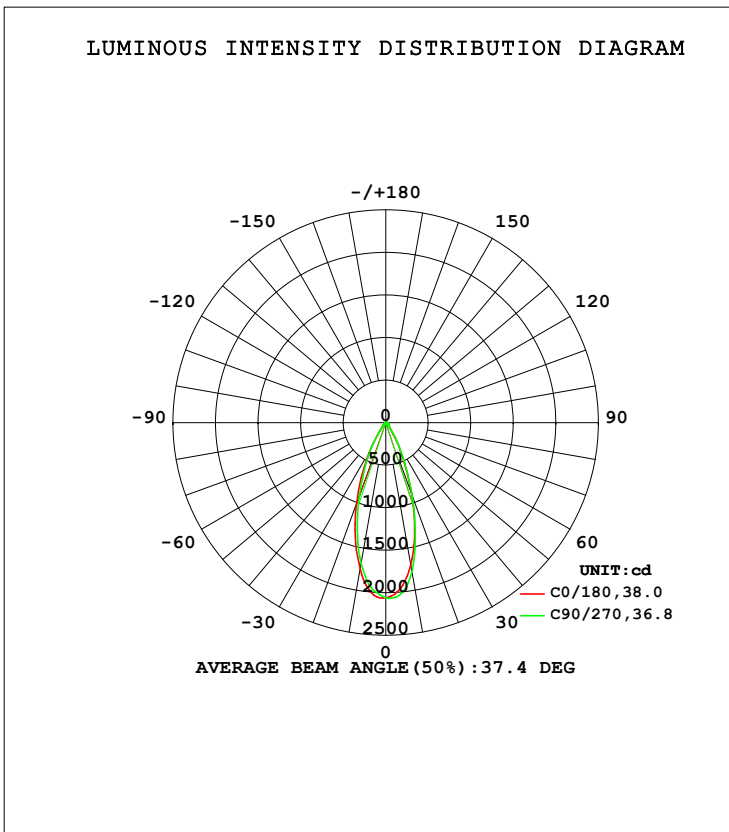


LUMINAIRE PHOTOMETRIC TEST REPORT

| | | |
|---|-------|------------------|
| Test:U:120.05V I:0.1077A P:12.743W PF:0.9479 Freq:59.98Hz Lamp Flux:985.85x1 lm | | |
| NAME: LED-2-S15W-L5CCTWH-T | TYPE: | WEIGHT: |
| SPEC.:4000K 90 | DIM.: | SERIAL No.: |
| MFR.: | SUR.: | Shielding Angle: |

| DATA OF LAMP | | PHOTOMETRIC DATA Eff: 77.36 lm/W | | | |
|-------------------|--------|-----------------------------------|--------|--|-----------|
| MODEL | | I _{max} (cd) | 2080 | S/MH (C0/180) | 0.64 |
| NOMINAL POWER (W) | 15 | LOR (%) | 100.0 | S/MH (C90/270) | 0.60 |
| RATED VOLTAGE (V) | 120 | TOTAL FLUX (lm) | 985.85 | <input type="checkbox"/> UP, DN (C0-180) | 0.0, 49.6 |
| NOMINAL FLUX (lm) | 985.85 | CIE CLASS | DIRECT | <input type="checkbox"/> UP, DN (C180-360) | 0.0, 50.4 |
| LAMPS INSIDE | 1 | <input type="checkbox"/> up (%) | 0.0 | CIBSE SHR NOM | 0.50 |
| TEST VOLTAGE (V) | 120 | <input type="checkbox"/> down (%) | 100.0 | CIBSE SHR MAX | 0.65 |



C Range: 0 - 360DEG
 C Interval: 22.5DEG
 Test Speed: HIGH
 Temperature: 25.3DEG
 Operators:
 Test Date: 2021-10-19

Range: 0 - 90DEG
 Interval: 1.0DEG
 Test System: EVERFINE GO-SPEX500_V1 SYSTEM V2.00.421
 Humidity: 65.0%
 Test Distance: 3.080m [K=1.0000]
 Remarks:

ZONAL FLUX DIAGRAM

ZONAL FLUX DIAGRAM:

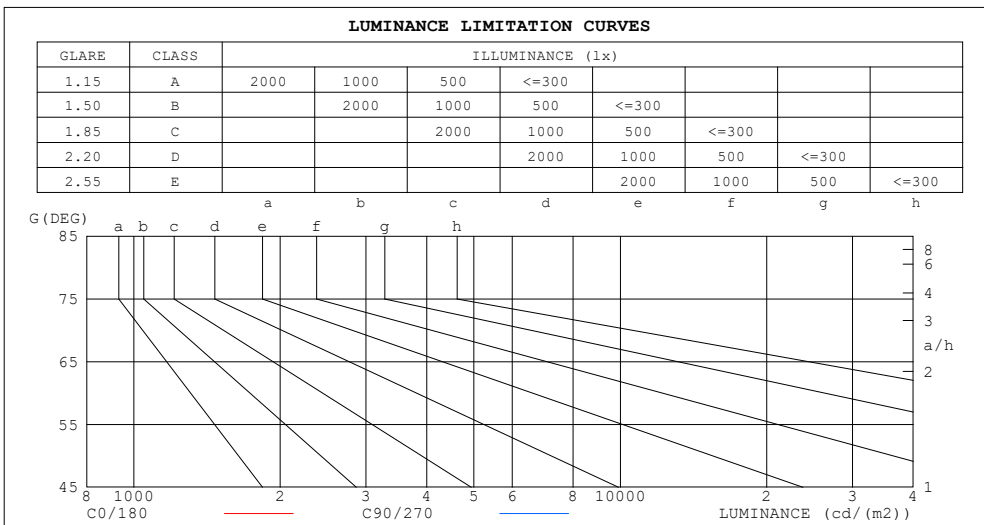
| mm | C0 | C45 | C90 | C135 | C180 | C225 | C270 | C315 | mm | □ zone | □ total | %lum, lamp |
|-----|-----------------------|--------|--------|--------|--------|--------|--------|--------|---------|---------|---------|------------|
| 10 | 1697 | 1716 | 1777 | 1756 | 1743 | 1732 | 1678 | 1675 | 0- 10 | 181.0 | 181.0 | 18.4,18.4 |
| 20 | 891.0 | 863.0 | 902.9 | 982.3 | 1009 | 945.8 | 908.9 | 905.1 | 10- 20 | 365.9 | 546.9 | 55.5,55.5 |
| 30 | 290.5 | 290.6 | 295.1 | 326.5 | 357.3 | 348.2 | 341.0 | 308.5 | 20- 30 | 263.3 | 810.2 | 82.2,82.2 |
| 40 | 64.36 | 63.57 | 64.77 | 70.61 | 73.68 | 74.64 | 72.13 | 68.41 | 30- 40 | 93.46 | 903.6 | 91.7,91.7 |
| 50 | 36.37 | 37.37 | 38.72 | 38.64 | 36.97 | 36.74 | 34.55 | 36.04 | 40- 50 | 38.24 | 941.9 | 95.5,95.5 |
| 60 | 19.53 | 20.22 | 20.94 | 20.98 | 19.67 | 18.05 | 15.54 | 18.31 | 50- 60 | 24.30 | 966.2 | 98,98 |
| 70 | 10.35 | 10.71 | 9.362 | 9.986 | 10.14 | 7.694 | 5.642 | 7.669 | 60- 70 | 13.64 | 979.8 | 99.4,99.4 |
| 80 | 3.890 | 2.613 | 1.343 | 2.139 | 3.715 | 1.261 | 0.3656 | 0.9898 | 70- 80 | 5.488 | 985.3 | 99.9,99.9 |
| 90 | 0.0292 | 0.0242 | 0.0216 | 0.0189 | 0.0378 | 0.0355 | 0.0349 | 0.0475 | 80- 90 | 0.5600 | 985.9 | 100,100 |
| 100 | | | | | | | | | 90-100 | | | |
| 110 | | | | | | | | | 100-110 | | | |
| 120 | | | | | | | | | 110-120 | | | |
| 130 | | | | | | | | | 120-130 | | | |
| 140 | | | | | | | | | 130-140 | | | |
| 150 | | | | | | | | | 140-150 | | | |
| 160 | | | | | | | | | 150-160 | | | |
| 170 | | | | | | | | | 160-170 | | | |
| 180 | | | | | | | | | 170-180 | | | |
| DEG | LUMINOUS INTENSITY:cd | | | | | | | | | UNIT:lm | | |

C Range: 0 - 360DEG
 C Interval: 22.5DEG
 Test Speed: HIGH
 Temperature:25.3DEG
 Operators:
 Test Date:2021-10-19

□ Range: 0 - 90DEG
 □ Interval: 1.0DEG
 Test System:EVERFINE GO-SPEX500_V1 SYSTEM V2.00.421
 Humidity:65.0%
 Test Distance:3.080m [K=1.0000]
 Remarks:

LUMINANCE LIMITATION CURVES

| | | |
|---|-------|------------------|
| Test:U:120.05V I:0.1077A P:12.743W PF:0.9479 Freq:59.98Hz Lamp Flux:985.85x1 lm | | |
| NAME: LED-2-S15W-L5CCTWH-T | TYPE: | WEIGHT: |
| SPEC.:4000K 90 | DIM.: | SERIAL No.: |
| MFR.: | SUR.: | Shielding Angle: |



| LUMINANCE cd/(m2) | | |
|-------------------|--------|---------|
| G (DEG) | C0/180 | C90/270 |
| 85 | 70 | 11 |
| 80 | 203 | 70 |
| 75 | 238 | 168 |
| 70 | 274 | 247 |
| 65 | 312 | 319 |
| 60 | 353 | 378 |
| 55 | 420 | 456 |
| 50 | 512 | 544 |
| 45 | 596 | 634 |

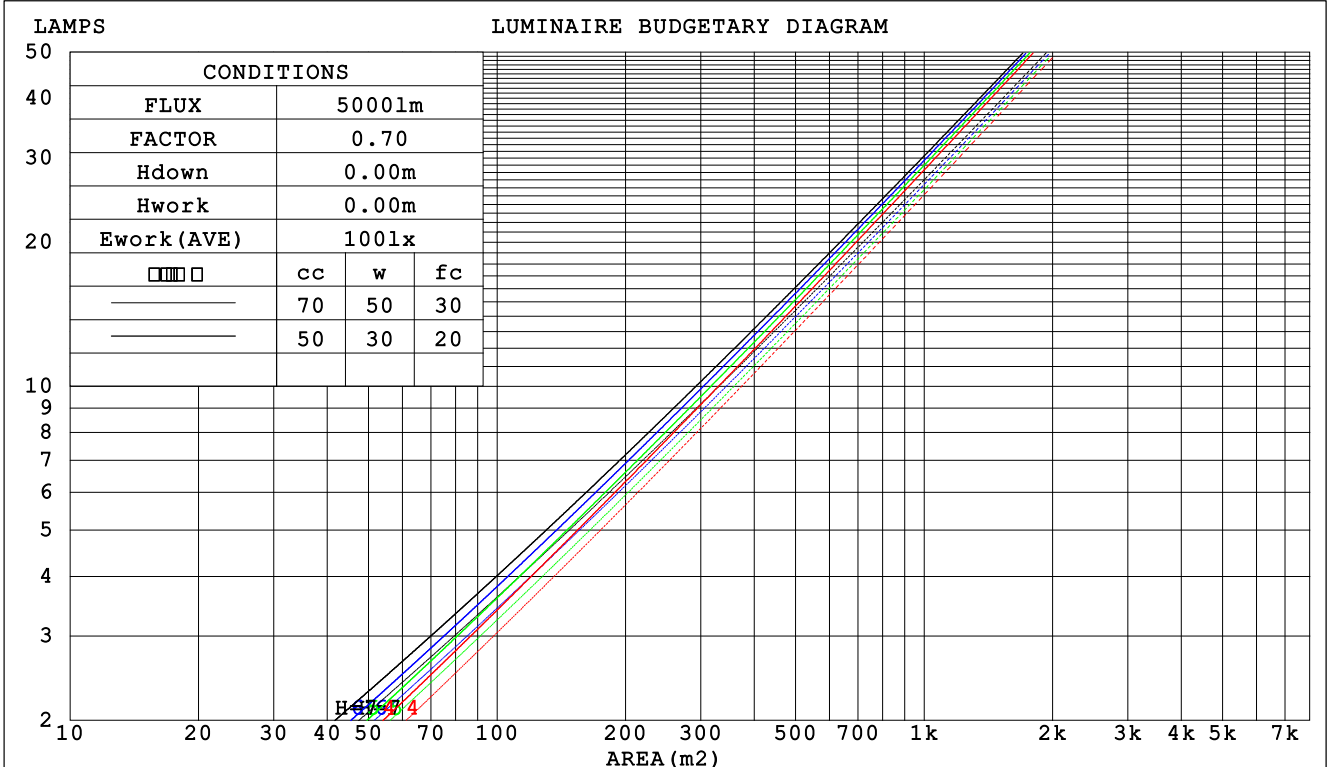
C Range: 0 - 360DEG
 C Interval: 22.5DEG
 Test Speed: HIGH
 Temperature:25.3DEG
 Operators:
 Test Date:2021-10-19

Range: 0 - 90DEG
 Interval: 1.0DEG
 Test System:EVERFINE GO-SPEX500_V1 SYSTEM V2.00.421
 Humidity:65.0%
 Test Distance:3.080m [K=1.0000]
 Remarks:

CU AND LUMINAIRE BUDGETARY ESTIMATE DIAGRAM

| | | |
|---|-------|------------------|
| Test:U:120.05V I:0.1077A P:12.743W PF:0.9479 Freq:59.98Hz Lamp Flux:985.85x1 lm | | |
| NAME:LED-2-S15W-L5CCTWH-T | TYPE: | WEIGHT: |
| SPEC.:4000K 90 | DIM.: | SERIAL No.: |
| MFR.: | SUR.: | Shielding Angle: |

| | | | | | | | | | | | | | | | | |
|------|-----------------------|------|------|------|------|------|---------------------------------|------|------|------|------|------|------|------|------|------|
| □cc | 80% | | | 70% | | | 50% | | | 30% | | | 10% | | | 0 |
| □w | 50% | 30% | 10% | 50% | 30% | 10% | 50% | 30% | 10% | 50% | 30% | 10% | 50% | 30% | 10% | 0 |
| □fc | 20% | | | 20% | | | 20% | | | 20% | | | 20% | | | 0 |
| RCR | RCR:Room Cavity Ratio | | | | | | Coefficients of Utilization(CU) | | | | | | | | | |
| 0.0 | 1.19 | 1.19 | 1.19 | 1.16 | 1.16 | 1.16 | 1.11 | 1.11 | 1.11 | 1.06 | 1.06 | 1.06 | 1.02 | 1.02 | 1.02 | 1.00 |
| 1.0 | 1.11 | 1.09 | 1.07 | 1.09 | 1.07 | 1.05 | 1.05 | 1.03 | 1.02 | 1.01 | 1.00 | .99 | .98 | .97 | .96 | .94 |
| 2.0 | 1.04 | 1.00 | .97 | 1.02 | .99 | .96 | .99 | .96 | .94 | .96 | .94 | .92 | .94 | .92 | .90 | .89 |
| 3.0 | .98 | .93 | .90 | .97 | .92 | .89 | .94 | .90 | .88 | .92 | .89 | .86 | .89 | .87 | .85 | .83 |
| 4.0 | .92 | .87 | .83 | .91 | .87 | .83 | .89 | .85 | .82 | .87 | .84 | .81 | .85 | .83 | .80 | .79 |
| 5.0 | .87 | .82 | .78 | .87 | .82 | .78 | .85 | .81 | .77 | .83 | .80 | .77 | .82 | .79 | .76 | .75 |
| 6.0 | .83 | .78 | .74 | .82 | .77 | .74 | .81 | .76 | .73 | .80 | .76 | .73 | .78 | .75 | .72 | .71 |
| 7.0 | .79 | .74 | .70 | .78 | .73 | .70 | .77 | .73 | .69 | .76 | .72 | .69 | .75 | .71 | .69 | .67 |
| 8.0 | .75 | .70 | .66 | .75 | .70 | .66 | .74 | .69 | .66 | .73 | .69 | .66 | .72 | .68 | .65 | .64 |
| 9.0 | .72 | .67 | .63 | .72 | .67 | .63 | .71 | .66 | .63 | .70 | .66 | .63 | .69 | .65 | .63 | .61 |
| 10.0 | .69 | .64 | .61 | .69 | .64 | .60 | .68 | .63 | .60 | .67 | .63 | .60 | .66 | .63 | .60 | .59 |



C Range: 0 - 360DEG
 C Interval: 22.5DEG
 Test Speed: HIGH
 Temperature:25.3DEG
 Operators:
 Test Date:2021-10-19

□ Range: 0 - 90DEG
 □ Interval: 1.0DEG
 Test System:EVERFINE GO-SPEX500_V1 SYSTEM V2.00.421
 Humidity:65.0%
 Test Distance:3.080m [K=1.0000]
 Remarks:

WEC AND CCEC

| | | |
|---|-------|------------------|
| Test:U:120.05V I:0.1077A P:12.743W PF:0.9479 Freq:59.98Hz Lamp Flux:985.85x1 lm | | |
| NAME:LED-2-S15W-L5CCTWH-T | TYPE: | WEIGHT: |
| SPEC.:4000K 90 | DIM.: | SERIAL No.: |
| MFR.: | SUR.: | Shielding Angle: |

| | | | | | | | | | | | | | | | | |
|-----------------------------|-----------------------|------|------|------|------|------|----------------------------------|------|------|------|------|------|------|------|------|---|
| <input type="checkbox"/> cc | 80% | | | 70% | | | 50% | | | 30% | | | 10% | | | 0 |
| <input type="checkbox"/> w | 50% | 30% | 10% | 50% | 30% | 10% | 50% | 30% | 10% | 50% | 30% | 10% | 50% | 30% | 10% | 0 |
| <input type="checkbox"/> fc | 20% | | | 20% | | | 20% | | | 20% | | | 20% | | | 0 |
| RCR | RCR:Room Cavity Ratio | | | | | | Wall Exitance Coefficients (WEC) | | | | | | | | | |
| 0.0 | | | | | | | | | | | | | | | | |
| 1.0 | .169 | .096 | .030 | .162 | .093 | .029 | .150 | .086 | .027 | .138 | .080 | .026 | .128 | .074 | .024 | |
| 2.0 | .160 | .088 | .027 | .154 | .085 | .026 | .144 | .080 | .025 | .134 | .075 | .024 | .125 | .071 | .022 | |
| 3.0 | .151 | .080 | .024 | .146 | .078 | .024 | .137 | .074 | .023 | .129 | .071 | .022 | .121 | .067 | .021 | |
| 4.0 | .143 | .074 | .022 | .138 | .072 | .021 | .131 | .069 | .021 | .124 | .066 | .020 | .117 | .064 | .019 | |
| 5.0 | .135 | .069 | .020 | .131 | .067 | .020 | .125 | .065 | .019 | .119 | .063 | .019 | .113 | .060 | .018 | |
| 6.0 | .128 | .064 | .018 | .125 | .063 | .018 | .119 | .061 | .018 | .114 | .059 | .017 | .109 | .057 | .017 | |
| 7.0 | .122 | .060 | .017 | .119 | .059 | .017 | .114 | .058 | .017 | .109 | .056 | .016 | .105 | .054 | .016 | |
| 8.0 | .116 | .057 | .016 | .114 | .056 | .016 | .109 | .055 | .016 | .105 | .053 | .015 | .101 | .052 | .015 | |
| 9.0 | .111 | .054 | .015 | .109 | .053 | .015 | .105 | .052 | .015 | .101 | .051 | .014 | .097 | .049 | .014 | |
| 10.0 | .106 | .051 | .014 | .104 | .050 | .014 | .101 | .049 | .014 | .097 | .048 | .014 | .094 | .047 | .014 | |

| | | | | | | | | | | | | | | | | |
|-----------------------------|-----------------------|------|------|------|------|------|---|------|------|------|------|------|------|------|------|---|
| <input type="checkbox"/> cc | 80% | | | 70% | | | 50% | | | 30% | | | 10% | | | 0 |
| <input type="checkbox"/> w | 50% | 30% | 10% | 50% | 30% | 10% | 50% | 30% | 10% | 50% | 30% | 10% | 50% | 30% | 10% | 0 |
| <input type="checkbox"/> fc | 20% | | | 20% | | | 20% | | | 20% | | | 20% | | | 0 |
| RCR | RCR:Room Cavity Ratio | | | | | | Ceiling Cavity Exitance Coefficients (CCEC) | | | | | | | | | |
| 0.0 | .190 | .190 | .190 | .163 | .163 | .163 | .111 | .111 | .111 | .064 | .064 | .064 | .020 | .020 | .020 | |
| 1.0 | .171 | .157 | .146 | .146 | .135 | .125 | .100 | .093 | .087 | .057 | .054 | .050 | .018 | .017 | .016 | |
| 2.0 | .155 | .133 | .114 | .132 | .114 | .099 | .091 | .079 | .069 | .052 | .046 | .040 | .017 | .015 | .013 | |
| 3.0 | .142 | .113 | .091 | .121 | .098 | .079 | .083 | .068 | .055 | .048 | .040 | .033 | .015 | .013 | .011 | |
| 4.0 | .131 | .099 | .074 | .112 | .085 | .064 | .077 | .059 | .045 | .045 | .035 | .027 | .014 | .011 | .009 | |
| 5.0 | .121 | .087 | .061 | .104 | .075 | .053 | .072 | .052 | .038 | .042 | .031 | .022 | .013 | .010 | .007 | |
| 6.0 | .113 | .077 | .051 | .097 | .067 | .045 | .067 | .047 | .032 | .039 | .028 | .019 | .013 | .009 | .006 | |
| 7.0 | .106 | .070 | .044 | .091 | .060 | .038 | .063 | .042 | .027 | .037 | .025 | .016 | .012 | .008 | .005 | |
| 8.0 | .100 | .063 | .038 | .086 | .055 | .033 | .060 | .038 | .023 | .035 | .023 | .014 | .011 | .007 | .005 | |
| 9.0 | .095 | .058 | .033 | .082 | .050 | .028 | .057 | .035 | .020 | .033 | .021 | .012 | .011 | .007 | .004 | |
| 10.0 | .090 | .053 | .029 | .078 | .046 | .025 | .054 | .033 | .018 | .031 | .019 | .011 | .010 | .006 | .004 | |

C Range: 0 - 360DEG
 C Interval: 22.5DEG
 Test Speed: HIGH
 Temperature:25.3DEG
 Operators:
 Test Date:2021-10-19

Range: 0 - 90DEG
 Interval: 1.0DEG
 Test System:EVERFINE GO-SPEX500_V1 SYSTEM V2.00.421
 Humidity:65.0%
 Test Distance:3.080m [K=1.0000]
 Remarks:

UGR(Unified Glare Rating) Table

| | | |
|---|-------|------------------|
| Test:U:120.05V I:0.1077A P:12.743W PF:0.9479 Freq:59.98Hz Lamp Flux:985.85x1 lm | | |
| NAME:LED-2-S15W-L5CCTWH-T | TYPE: | WEIGHT: |
| SPEC.:4000K 90 | DIM.: | SERIAL No.: |
| MFR.: | SUR.: | Shielding Angle: |

| | | | | | | | | | | |
|--|------------------|-----|-----|-----|-----|----------------|-----|-----|-----|-----|
| ceiling/cavity | 0.7 | 0.7 | 0.5 | 0.5 | 0.3 | 0.7 | 0.7 | 0.5 | 0.5 | 0.3 |
| walls | 0.5 | 0.3 | 0.5 | 0.3 | 0.3 | 0.5 | 0.3 | 0.5 | 0.3 | 0.3 |
| working plane | 0.2 | 0.2 | 0.2 | 0.2 | 0.2 | 0.2 | 0.2 | 0.2 | 0.2 | 0.2 |
| Room dimensions | Viewed crosswise | | | | | Viewed endwise | | | | |
| x = 2H y = 2H | 4.8 | 5.6 | 5.0 | 5.8 | 6.0 | 5.1 | 5.9 | 5.3 | 6.1 | 6.2 |
| 3H | 5.4 | 6.2 | 5.7 | 6.4 | 6.6 | 5.6 | 6.4 | 5.8 | 6.6 | 6.8 |
| 4H | 5.7 | 6.4 | 5.9 | 6.6 | 6.9 | 5.7 | 6.5 | 6.0 | 6.7 | 6.9 |
| 6H | 5.8 | 6.5 | 6.1 | 6.8 | 7.0 | 5.7 | 6.4 | 6.0 | 6.6 | 6.9 |
| 8H | 5.8 | 6.5 | 6.1 | 6.8 | 7.0 | 5.6 | 6.3 | 5.9 | 6.6 | 6.8 |
| 12H | 5.8 | 6.4 | 6.1 | 6.7 | 7.0 | 5.6 | 6.2 | 5.9 | 6.5 | 6.8 |
| 4H 2H | 5.0 | 5.8 | 5.3 | 6.0 | 6.2 | 5.3 | 6.0 | 5.5 | 6.2 | 6.5 |
| 3H | 5.9 | 6.5 | 6.2 | 6.8 | 7.1 | 6.0 | 6.6 | 6.3 | 6.9 | 7.2 |
| 4H | 6.2 | 6.8 | 6.5 | 7.1 | 7.4 | 6.1 | 6.7 | 6.5 | 7.0 | 7.3 |
| 6H | 6.4 | 7.0 | 6.8 | 7.3 | 7.6 | 6.1 | 6.7 | 6.5 | 7.0 | 7.3 |
| 8H | 6.4 | 6.9 | 6.8 | 7.3 | 7.7 | 6.1 | 6.6 | 6.5 | 6.9 | 7.3 |
| 12H | 6.4 | 6.9 | 6.8 | 7.2 | 7.6 | 6.0 | 6.5 | 6.4 | 6.8 | 7.2 |
| 8H 4H | 6.2 | 6.7 | 6.6 | 7.1 | 7.5 | 6.2 | 6.7 | 6.6 | 7.0 | 7.4 |
| 6H | 6.6 | 7.0 | 7.0 | 7.3 | 7.8 | 6.2 | 6.6 | 6.6 | 7.0 | 7.4 |
| 8H | 6.6 | 6.9 | 7.0 | 7.4 | 7.8 | 6.1 | 6.5 | 6.6 | 6.9 | 7.4 |
| 12H | 6.6 | 6.9 | 7.0 | 7.3 | 7.8 | 6.1 | 6.4 | 6.6 | 6.8 | 7.3 |
| 12H 4H | 6.2 | 6.7 | 6.6 | 7.0 | 7.4 | 6.1 | 6.6 | 6.5 | 7.0 | 7.3 |
| 6H | 6.5 | 6.9 | 7.0 | 7.3 | 7.7 | 6.2 | 6.5 | 6.6 | 6.9 | 7.4 |
| 8H | 6.5 | 6.8 | 7.0 | 7.3 | 7.8 | 6.1 | 6.4 | 6.6 | 6.9 | 7.3 |
| Variations with the observer position at spacings: | | | | | | | | | | |
| S = 1.0H | + 0.5 / - 0.7 | | | | | + 0.8 / - 0.8 | | | | |
| 1.5H | + 0.7 / - 0.4 | | | | | + 1.0 / - 0.5 | | | | |
| 2.0H | + 0.9 / - 0.8 | | | | | + 1.1 / - 0.9 | | | | |

CIE Pub.117, 985.9 lm Total Lamp Luminous Flux Correct (8log(F/F0) = -0.0)
 Area: 0.111111 m2

C Range: 0 - 360DEG
 C Interval: 22.5DEG
 Test Speed: HIGH
 Temperature:25.3DEG
 Operators:
 Test Date:2021-10-19

Range: 0 - 90DEG
 Interval: 1.0DEG
 Test System:EVERFINE GO-SPEX500_V1 SYSTEM V2.00.421
 Humidity:65.0%
 Test Distance:3.080m [K=1.0000]
 Remarks:

UTILIZATION FACTORS TABLE

| | | |
|---|-------|------------------|
| Test:U:120.05V I:0.1077A P:12.743W PF:0.9479 Freq:59.98Hz Lamp Flux:985.85x1 lm | | |
| NAME:LED-2-S15W-L5CCTWH-T | TYPE: | WEIGHT: |
| SPEC.:4000K 90 | DIM.: | SERIAL No.: |
| MFR.: | SUR.: | Shielding Angle: |

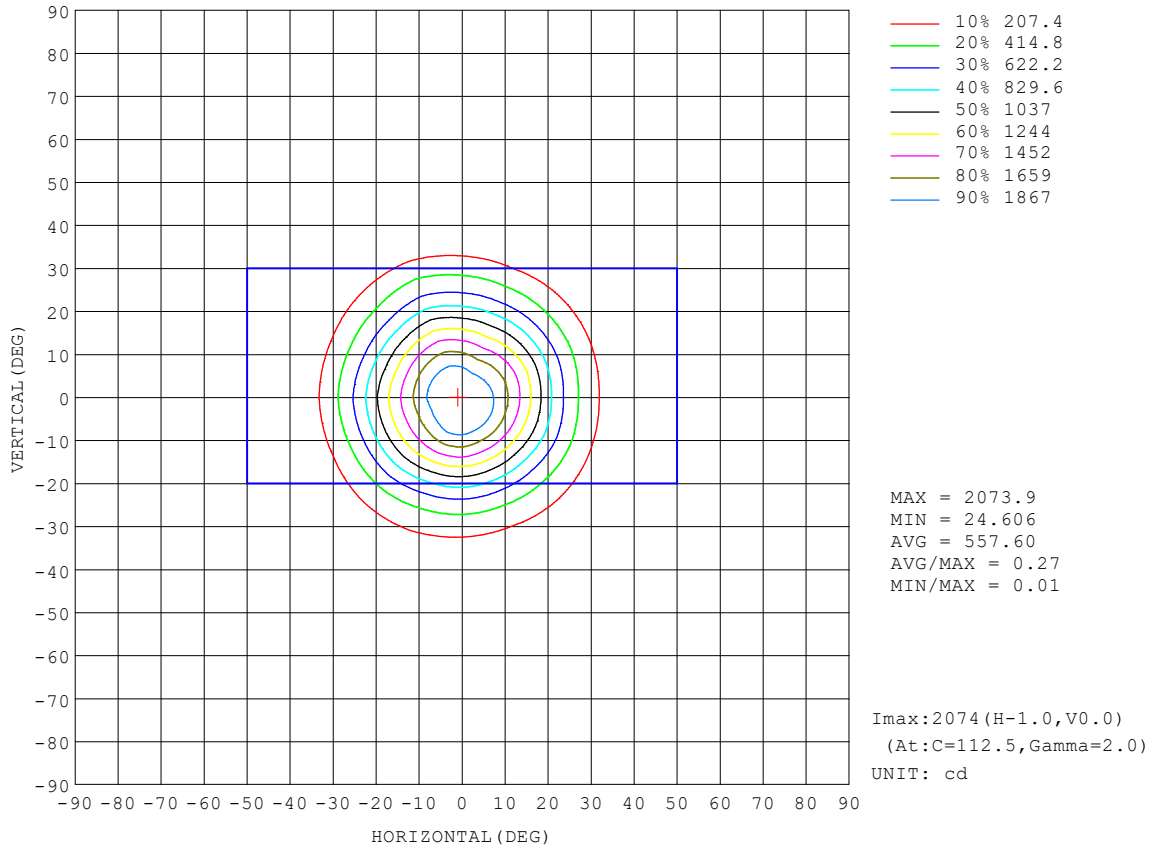
| REFLECTANCE | | | | | | | | | | |
|----------------------------------|--|-----|-----------|-----|-----|-----|---------------|-----|-----|--------|
| Ceiling | 0.8 | 0.8 | 0.8 | 0.7 | 0.7 | 0.7 | 0.5 | 0.5 | 0.5 | 0 |
| Walls | 0.7 | 0.5 | 0.3 | 0.7 | 0.5 | 0.3 | 0.7 | 0.5 | 0.3 | 0 |
| Working plane | 0.2 | 0.2 | 0.2 | 0.2 | 0.2 | 0.2 | 0.2 | 0.2 | 0.2 | 0 |
| ROOM INDEX | UTILIZATION FACTORS (PERCENT) $k(RI) \times RCR = 5$ | | | | | | | | | |
| k = 0.60 | 86 | 80 | 76 | 86 | 80 | 76 | 85 | 79 | 76 | 72 |
| 0.80 | 94 | 88 | 84 | 93 | 87 | 84 | 92 | 87 | 83 | 80 |
| 1.00 | 98 | 93 | 89 | 98 | 92 | 89 | 96 | 92 | 88 | 84 |
| 1.25 | 102 | 97 | 93 | 101 | 97 | 93 | 99 | 95 | 92 | 88 |
| 1.50 | 105 | 100 | 97 | 104 | 100 | 96 | 102 | 98 | 95 | 91 |
| 2.00 | 108 | 104 | 100 | 107 | 103 | 100 | 104 | 101 | 98 | 93 |
| 2.50 | 110 | 106 | 103 | 108 | 105 | 102 | 105 | 102 | 100 | 94 |
| 3.00 | 111 | 108 | 105 | 110 | 106 | 104 | 106 | 104 | 102 | 95 |
| 4.00 | 114 | 111 | 108 | 111 | 109 | 107 | 108 | 106 | 104 | 97 |
| 5.00 | 115 | 113 | 111 | 113 | 111 | 109 | 109 | 107 | 106 | 98 |
| ROOM INDEX | UF(total) | | | | | | | | | Direct |
| According to DIN EN 13032-2 2004 | | | Suspended | | | | SHRNOM = 1.25 | | | |

C Range: 0 - 360DEG
 C Interval: 22.5DEG
 Test Speed: HIGH
 Temperature:25.3DEG
 Operators:
 Test Date:2021-10-19

Range: 0 - 90DEG
 Interval: 1.0DEG
 Test System:EVERFINE GO-SPEX500_V1 SYSTEM V2.00.421
 Humidity:65.0%
 Test Distance:3.080m [K=1.0000]
 Remarks:

ISOCANDELA DIAGRAM

| | | |
|---|-------|------------------|
| Test:U:120.05V I:0.1077A P:12.743W PF:0.9479 Freq:59.98Hz Lamp Flux:985.85x1 lm | | |
| NAME: LED-2-S15W-L5CCTWH-T | TYPE: | WEIGHT: |
| SPEC.:4000K 90 | DIM.: | SERIAL No.: |
| MFR.: | SUR.: | Shielding Angle: |

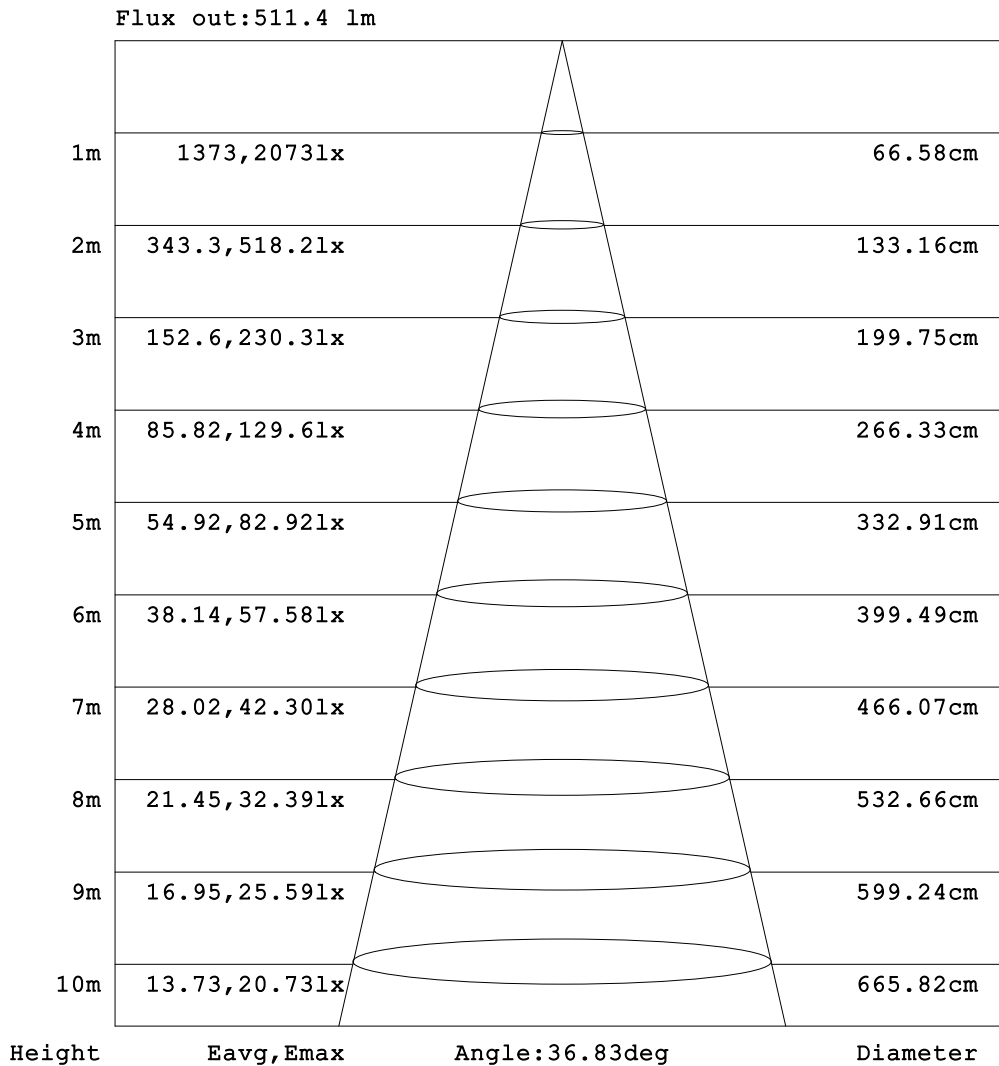


C Range: 0 - 360DEG
 C Interval: 22.5DEG
 Test Speed: HIGH
 Temperature:25.3DEG
 Operators:
 Test Date:2021-10-19

Range: 0 - 90DEG
 Interval: 1.0DEG
 Test System:EVERFINE GO-SPEX500_V1 SYSTEM V2.00.421
 Humidity:65.0%
 Test Distance:3.080m [K=1.0000]
 Remarks:

AAI Figure

| | | |
|---|-------|------------------|
| Test:U:120.05V I:0.1077A P:12.743W PF:0.9479 Freq:59.98Hz Lamp Flux:985.85x1 lm | | |
| NAME:LED-2-S15W-L5CCTWH-T | TYPE: | WEIGHT: |
| SPEC.:4000K 90 | DIM.: | SERIAL No.: |
| MFR.: | SUR.: | Shielding Angle: |



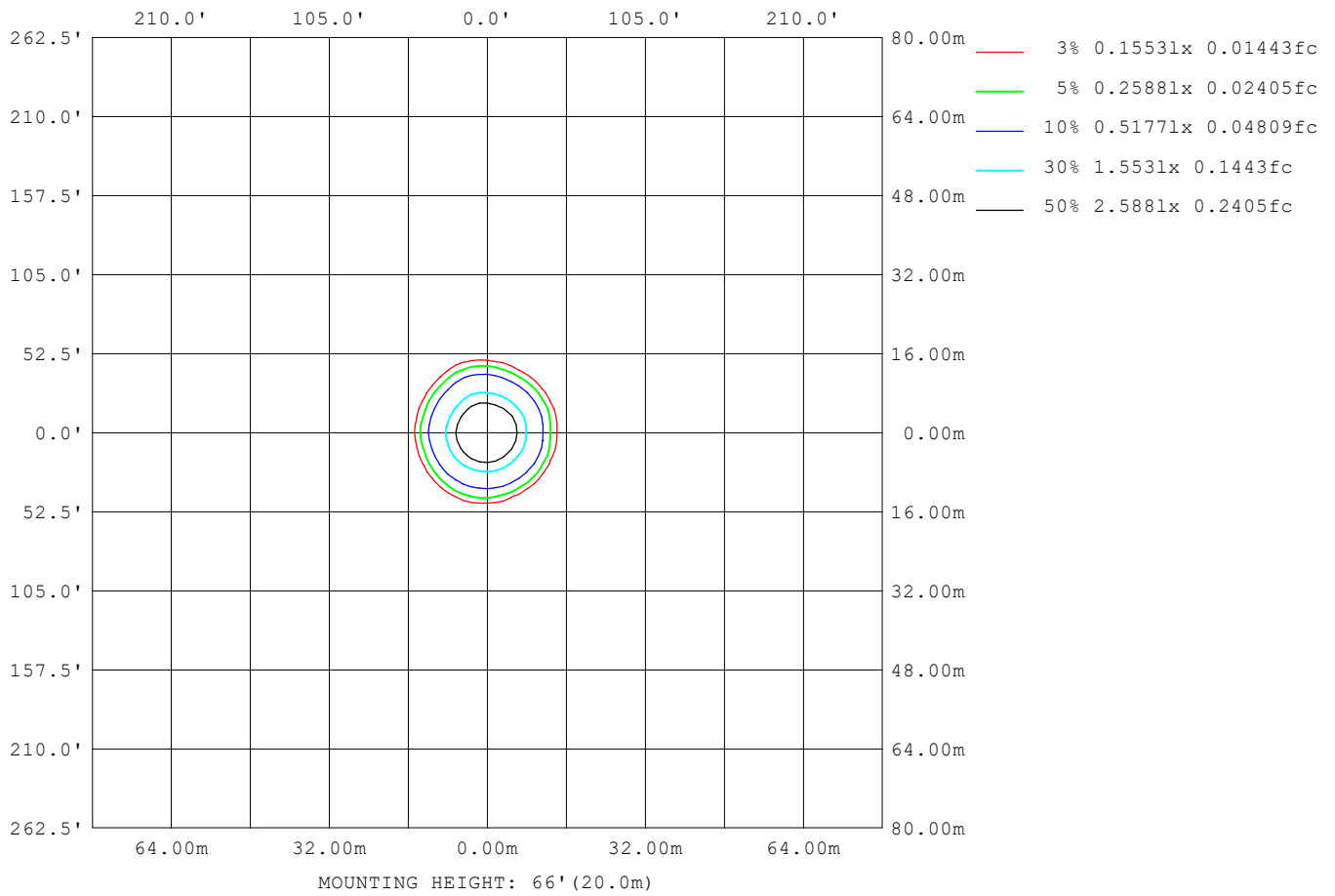
Note:The Curves indicate the illuminated area and the average illumination when the luminaire is at different distance.

C Range: 0 - 360DEG
 C Interval: 22.5DEG
 Test Speed: HIGH
 Temperature:25.3DEG
 Operators:
 Test Date:2021-10-19

Range: 0 - 90DEG
 Interval: 1.0DEG
 Test System:EVERFINE GO-SPEX500_V1 SYSTEM V2.00.421
 Humidity:65.0%
 Test Distance:3.080m [K=1.0000]
 Remarks:

ISOLUX DIAGRAM

| | | |
|---|-------|------------------|
| Test:U:120.05V I:0.1077A P:12.743W PF:0.9479 Freq:59.98Hz Lamp Flux:985.85x1 lm | | |
| NAME:LED-2-S15W-L5CCTWH-T | TYPE: | WEIGHT: |
| SPEC.:4000K 90 | DIM.: | SERIAL No.: |
| MFR.: | SUR.: | Shielding Angle: |



C Range: 0 - 360DEG
 C Interval: 22.5DEG
 Test Speed: HIGH
 Temperature:25.3DEG
 Operators:
 Test Date:2021-10-19

Range: 0 - 90DEG
 Interval: 1.0DEG
 Test System:EVERFINE GO-SPEX500_V1 SYSTEM V2.00.421
 Humidity:65.0%
 Test Distance:3.080m [K=1.0000]
 Remarks:

LED Avg.L Report

| | | |
|---|-------|------------------|
| Test:U:120.05V I:0.1077A P:12.743W PF:0.9479 Freq:59.98Hz Lamp Flux:985.85x1 lm | | |
| NAME: LED-2-S15W-L5CCTWH-T | TYPE: | WEIGHT: |
| SPEC.:4000K 90 | DIM.: | SERIAL No.: |
| MFR.: | SUR.: | Shielding Angle: |

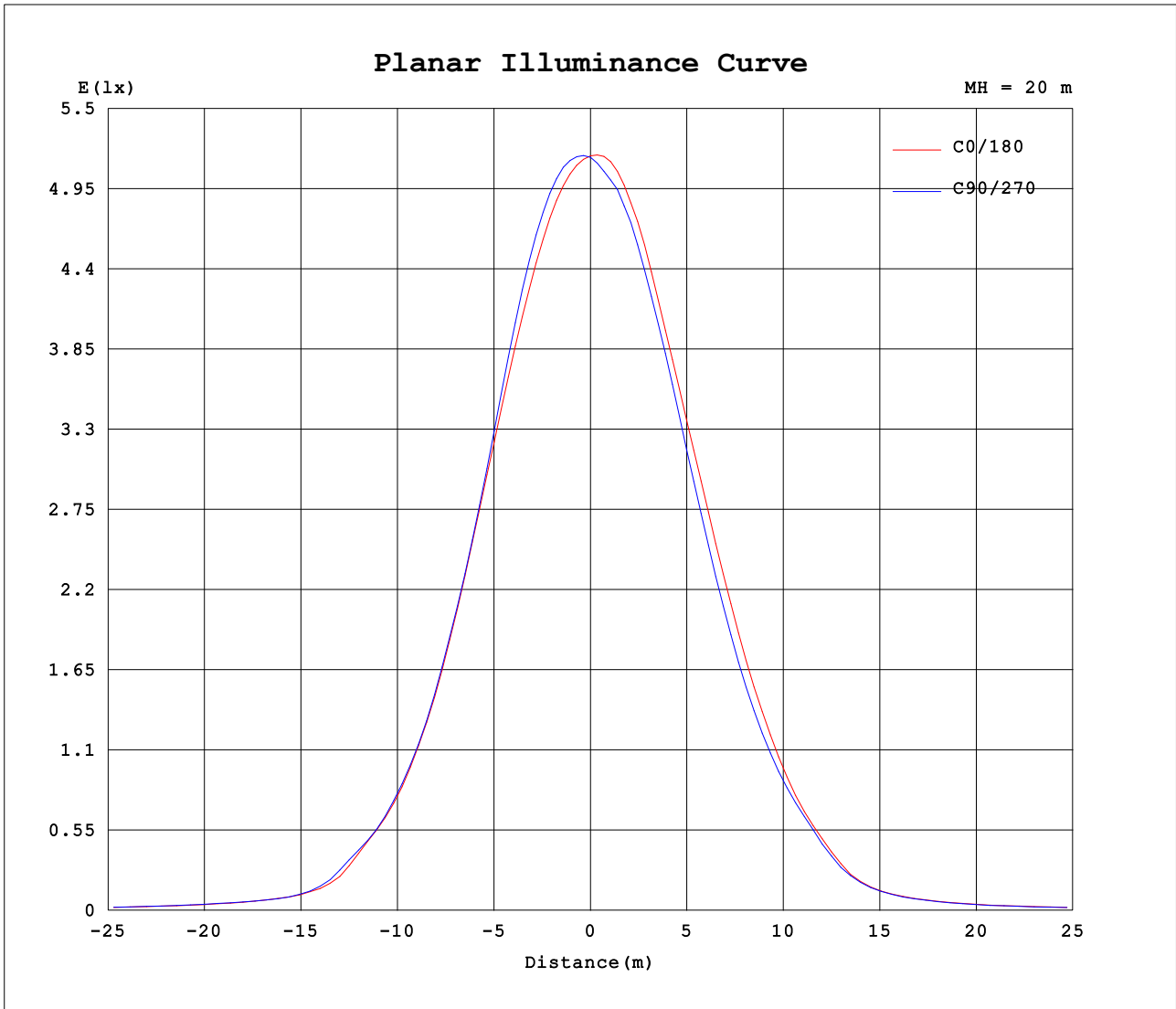
| AvgL | cd/m2 |
|------------------|-------|
| L_0~180 (65) av | 310 |
| L_0~180 (75) av | 233 |
| L_0~180 (85) av | 76 |
| L_90~270 (65) av | 265 |
| L_90~270 (75) av | 126 |
| L_90~270 (85) av | 10 |
| L_45 (65) av | 295 |
| L_45 (75) av | 173 |
| L_45 (85) av | 10 |

Standard: GB/T 29293-2012

C Range: 0 - 360DEG
 C Interval: 22.5DEG
 Test Speed: HIGH
 Temperature:25.3DEG
 Operators:
 Test Date:2021-10-19

Range: 0 - 90DEG
 Interval: 1.0DEG
 Test System:EVERFINE GO-SPEX500_V1 SYSTEM V2.00.421
 Humidity:65.0%
 Test Distance:3.080m [K=1.0000]
 Remarks:

Planar Illuminance Curve



C Range: 0 - 360DEG
 C Interval: 22.5DEG
 Test Speed: HIGH
 Temperature: 25.3DEG
 Operators:
 Test Date: 2021-10-19

Range: 0 - 90DEG
 Interval: 1.0DEG
 Test System: EVERFINE GO-SPEX500_V1 SYSTEM V2.00.421
 Humidity: 65.0%
 Test Distance: 3.080m [K=1.0000]
 Remarks:

LUMINOUS DISTRIBUTION INTENSITY DATA

| | | |
|---|-------|------------------|
| Test:U:120.05V I:0.1077A P:12.743W PF:0.9479 Freq:59.98Hz Lamp Flux:985.85x1 lm | | |
| NAME:LED-2-S15W-L5CCTWH-T | TYPE: | WEIGHT: |
| SPEC.:4000K 90 | DIM.: | SERIAL No.: |
| MFR.: | SUR.: | Shielding Angle: |

Table--1

UNIT: cd

| C (DEG) \ □ (DEG) | 0 | 22.5 | 45 | 67.5 | 90 | 112.5 | 135 | 157.5 | 180 | 202.5 | 225 | 247.5 | 270 | 292.5 | 315 | 337.5 | | | |
|-------------------|------|------|------|------|------|-------|------|-------|------|-------|------|-------|------|-------|------|-------|--|--|--|
| 0 | 2060 | 2060 | 2060 | 2060 | 2060 | 2060 | 2060 | 2060 | 2060 | 2060 | 2060 | 2060 | 2060 | 2060 | 2060 | 2060 | | | |
| 5 | 1961 | 1972 | 1985 | 1996 | 2024 | 2048 | 2026 | 2001 | 2003 | 1989 | 1976 | 1972 | 1949 | 1928 | 1943 | 1962 | | | |
| 10 | 1697 | 1702 | 1716 | 1726 | 1777 | 1800 | 1756 | 1736 | 1743 | 1736 | 1732 | 1731 | 1678 | 1635 | 1675 | 1712 | | | |
| 15 | 1319 | 1305 | 1291 | 1298 | 1341 | 1374 | 1389 | 1391 | 1394 | 1354 | 1357 | 1374 | 1302 | 1262 | 1311 | 1351 | | | |
| 20 | 891 | 896 | 863 | 869 | 903 | 927 | 982 | 999 | 1009 | 953 | 946 | 982 | 909 | 881 | 905 | 926 | | | |
| 25 | 525 | 544 | 514 | 509 | 534 | 555 | 606 | 619 | 644 | 594 | 586 | 631 | 578 | 547 | 552 | 559 | | | |
| 30 | 291 | 299 | 291 | 280 | 295 | 305 | 326 | 332 | 357 | 341 | 348 | 385 | 341 | 301 | 309 | 314 | | | |
| 35 | 110 | 108 | 107 | 106 | 121 | 139 | 138 | 135 | 145 | 137 | 143 | 164 | 140 | 119 | 119 | 123 | | | |
| 40 | 64.4 | 64.0 | 63.6 | 63.3 | 64.8 | 67.1 | 70.6 | 71.3 | 73.7 | 71.9 | 74.6 | 80.5 | 72.1 | 67.3 | 68.4 | 68.8 | | | |
| 45 | 46.6 | 47.2 | 47.4 | 47.6 | 49.6 | 52.0 | 51.6 | 49.0 | 49.2 | 47.7 | 47.6 | 48.1 | 45.5 | 45.3 | 47.7 | 48.3 | | | |
| 50 | 36.4 | 36.9 | 37.4 | 37.3 | 38.7 | 39.7 | 38.6 | 37.4 | 37.0 | 36.8 | 36.7 | 36.0 | 34.5 | 34.4 | 36.0 | 37.2 | | | |
| 55 | 26.6 | 27.1 | 27.4 | 27.4 | 29.0 | 30.0 | 28.9 | 27.4 | 27.1 | 26.8 | 26.3 | 24.2 | 23.2 | 23.3 | 26.0 | 27.4 | | | |
| 60 | 19.5 | 20.0 | 20.2 | 20.3 | 20.9 | 21.3 | 21.0 | 20.1 | 19.7 | 19.2 | 18.0 | 16.5 | 15.5 | 16.0 | 18.3 | 19.9 | | | |
| 65 | 14.6 | 15.0 | 15.3 | 15.2 | 14.9 | 15.0 | 15.1 | 14.8 | 14.5 | 13.9 | 12.4 | 10.8 | 9.91 | 10.4 | 12.6 | 14.8 | | | |
| 70 | 10.3 | 10.7 | 10.7 | 9.97 | 9.36 | 9.51 | 9.99 | 10.3 | 10.1 | 9.31 | 7.69 | 6.36 | 5.64 | 5.96 | 7.67 | 9.94 | | | |
| 75 | 6.80 | 7.06 | 6.38 | 5.38 | 4.81 | 5.00 | 5.64 | 6.32 | 6.61 | 5.53 | 4.03 | 2.99 | 2.46 | 2.62 | 3.82 | 5.75 | | | |
| 80 | 3.89 | 3.70 | 2.61 | 1.73 | 1.34 | 1.50 | 2.14 | 3.04 | 3.71 | 2.49 | 1.26 | 0.59 | 0.37 | 0.41 | 0.99 | 2.39 | | | |
| 85 | 0.67 | 0.83 | 0.10 | 0.11 | 0.10 | 0.08 | 0.07 | 0.67 | 0.80 | 0.41 | 0.08 | 0.08 | 0.08 | 0.08 | 0.12 | 0.33 | | | |
| 90 | 0.03 | 0.03 | 0.02 | 0.02 | 0.02 | 0.02 | 0.02 | 0.02 | 0.04 | 0.04 | 0.04 | 0.03 | 0.03 | 0.03 | 0.05 | 0.04 | | | |

C Range: 0 - 360DEG
 C Interval: 22.5DEG
 Test Speed: HIGH
 Temperature:25.3DEG
 Operators:
 Test Date:2021-10-19

□ Range: 0 - 90DEG
 □ Interval: 1.0DEG
 Test System:EVERFINE GO-SPEX500_V1 SYSTEM V2.00.421
 Humidity:65.0%
 Test Distance:3.080m [K=1.0000]
 Remarks: