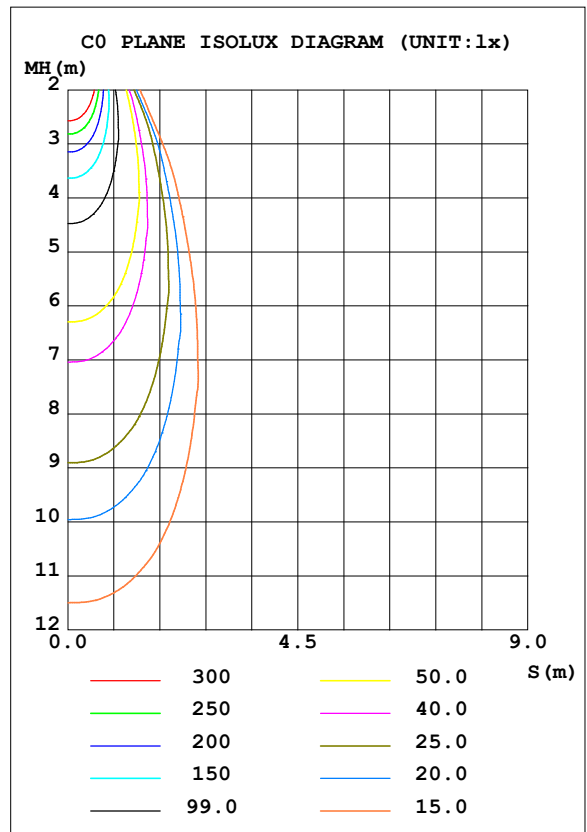
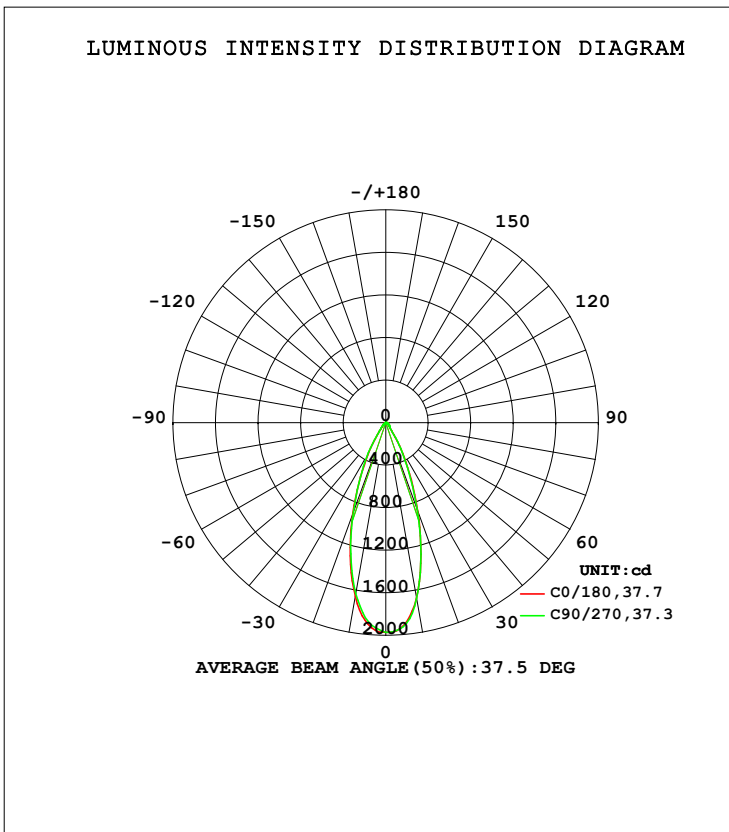


LUMINAIRE PHOTOMETRIC TEST REPORT

Test:U:120.05V I:0.1072A P:12.674W PF:0.9476 Freq:59.98Hz Lamp Flux:950.823x1 lm		
NAME: LED-2-S15W-L5CCTWH-T	TYPE:	WEIGHT:
SPEC.:3500K 90	DIM.:	SERIAL No.:
MFR.:	SUR.:	Shielding Angle:

DATA OF LAMP		PHOTOMETRIC DATA Eff: 75.02 lm/W			
MODEL		I _{max} (cd)	1987	S/MH (C0/180)	0.62
NOMINAL POWER (W)	15	LOR (%)	100.0	S/MH (C90/270)	0.61
RATED VOLTAGE (V)	120	TOTAL FLUX (lm)	950.82	<input type="checkbox"/> UP, DN (C0-180)	0.0, 49.2
NOMINAL FLUX (lm)	950.823	CIE CLASS	DIRECT	<input type="checkbox"/> UP, DN (C180-360)	0.0, 50.8
LAMPS INSIDE	1	<input type="checkbox"/> up (%)	0.0	CIBSE SHR NOM	0.50
TEST VOLTAGE (V)	120	<input type="checkbox"/> down (%)	100.0	CIBSE SHR MAX	0.65



C Range: 0 - 360DEG
 C Interval: 22.5DEG
 Test Speed: HIGH
 Temperature: 25.3DEG
 Operators:
 Test Date: 2021-10-19

Range: 0 - 90DEG
 Interval: 1.0DEG
 Test System: EVERFINE GO-SPEX500_V1 SYSTEM V2.00.421
 Humidity: 65.0%
 Test Distance: 3.080m [K=1.0000]
 Remarks:

ZONAL FLUX DIAGRAM

ZONAL FLUX DIAGRAM:

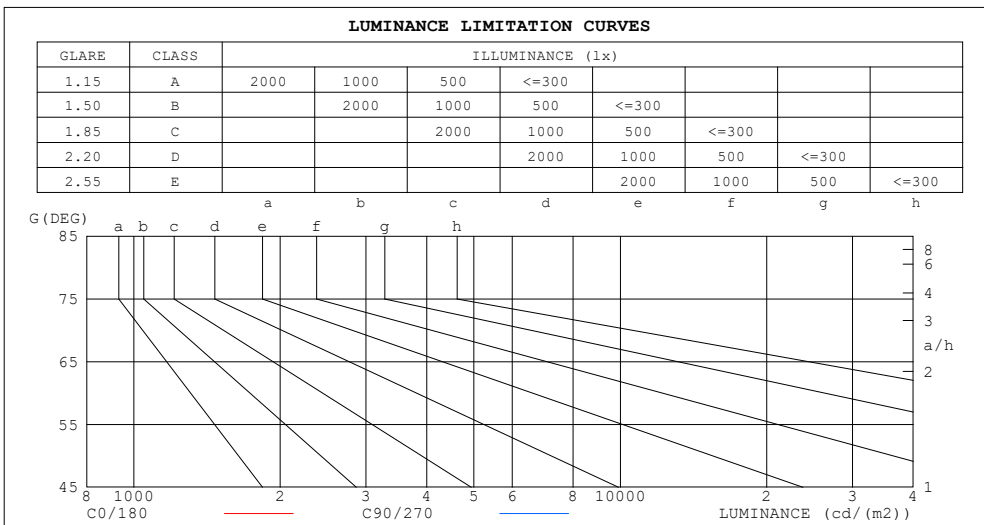
mm	C0	C45	C90	C135	C180	C225	C270	C315	mm	□ zone	□ total	%lum, lamp
10	1673	1674	1679	1686	1658	1649	1631	1645	0- 10	174.3	174.3	18.3,18.3
20	876.0	849.1	866.3	903.9	908.3	920.9	895.3	907.2	10- 20	352.2	526.5	55.4,55.4
30	294.3	279.6	283.4	299.3	315.8	353.8	333.3	330.7	20- 30	253.7	780.3	82.1,82.1
40	64.32	61.75	62.50	66.91	68.15	74.05	70.63	69.76	30- 40	90.62	870.9	91.6,91.6
50	35.52	36.30	37.50	37.56	35.91	35.85	33.70	34.92	40- 50	37.17	908.0	95.5,95.5
60	19.02	19.60	20.34	20.42	19.04	17.61	15.11	17.71	50- 60	23.63	931.7	98,98
70	10.01	10.41	9.129	9.788	9.897	7.513	5.492	7.383	60- 70	13.25	944.9	99.4,99.4
80	3.757	2.541	1.317	2.108	3.635	1.237	0.3582	0.9553	70- 80	5.343	950.3	99.9,99.9
90	0.0296	0.0253	0.0196	0.0165	0.0369	0.0339	0.0299	0.0481	80- 90	0.5472	950.8	100,100
100									90-100			
110									100-110			
120									110-120			
130									120-130			
140									130-140			
150									140-150			
160									150-160			
170									160-170			
180									170-180			
DEG	LUMINOUS INTENSITY:cd									UNIT:lm		

C Range: 0 - 360DEG
 C Interval: 22.5DEG
 Test Speed: HIGH
 Temperature:25.3DEG
 Operators:
 Test Date:2021-10-19

□ Range: 0 - 90DEG
 □ Interval: 1.0DEG
 Test System:EVERFINE GO-SPEX500_V1 SYSTEM V2.00.421
 Humidity:65.0%
 Test Distance:3.080m [K=1.0000]
 Remarks:

LUMINANCE LIMITATION CURVES

Test:U:120.05V I:0.1072A P:12.674W PF:0.9476 Freq:59.98Hz Lamp Flux:950.823x1 lm		
NAME: LED-2-S15W-L5CCTWH-T	TYPE:	WEIGHT:
SPEC.:3500K 90	DIM.:	SERIAL No.:
MFR.:	SUR.:	Shielding Angle:



LUMINANCE cd/(m2)		
G (DEG)	C0/180	C90/270
85	68	10
80	196	69
75	230	164
70	265	241
65	303	311
60	344	367
55	412	442
50	500	527
45	585	613

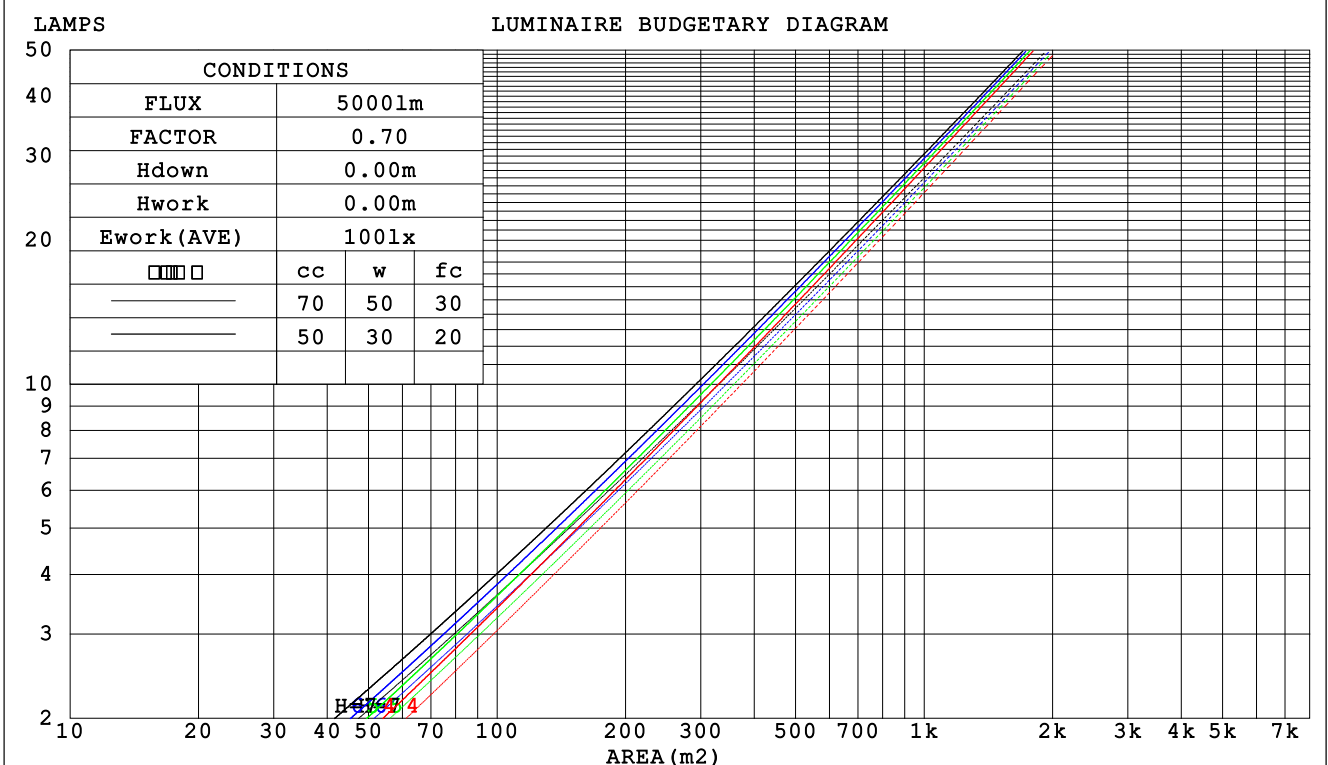
C Range: 0 - 360DEG
 C Interval: 22.5DEG
 Test Speed: HIGH
 Temperature:25.3DEG
 Operators:
 Test Date:2021-10-19

Range: 0 - 90DEG
 Interval: 1.0DEG
 Test System:EVERFINE GO-SPEX500_V1 SYSTEM V2.00.421
 Humidity:65.0%
 Test Distance:3.080m [K=1.0000]
 Remarks:

CU AND LUMINAIRE BUDGETARY ESTIMATE DIAGRAM

Test:U:120.05V I:0.1072A P:12.674W PF:0.9476 Freq:59.98Hz Lamp Flux:950.823x1 lm		
NAME:LED-2-S15W-L5CCTWH-T	TYPE:	WEIGHT:
SPEC.:3500K 90	DIM.:	SERIAL No.:
MFR.:	SUR.:	Shielding Angle:

□cc	80%			70%			50%			30%			10%			0
□w	50%	30%	10%	50%	30%	10%	50%	30%	10%	50%	30%	10%	50%	30%	10%	0
□fc	20%			20%			20%			20%			20%			0
RCR	RCR:Room Cavity Ratio						Coefficients of Utilization(CU)									
0.0	1.19	1.19	1.19	1.16	1.16	1.16	1.11	1.11	1.11	1.06	1.06	1.06	1.02	1.02	1.02	1.00
1.0	1.11	1.09	1.07	1.09	1.07	1.05	1.05	1.03	1.02	1.01	1.00	.99	.98	.97	.96	.94
2.0	1.04	1.00	.97	1.02	.99	.96	.99	.96	.94	.96	.94	.92	.94	.92	.90	.89
3.0	.98	.93	.90	.97	.92	.89	.94	.90	.88	.92	.89	.86	.89	.87	.85	.83
4.0	.92	.87	.83	.91	.87	.83	.89	.85	.82	.87	.84	.81	.85	.83	.80	.79
5.0	.87	.82	.78	.87	.82	.78	.85	.81	.77	.83	.79	.77	.82	.78	.76	.75
6.0	.83	.78	.74	.82	.77	.74	.81	.76	.73	.79	.76	.73	.78	.75	.72	.71
7.0	.79	.74	.70	.78	.73	.70	.77	.73	.69	.76	.72	.69	.75	.71	.69	.67
8.0	.75	.70	.66	.75	.70	.66	.74	.69	.66	.73	.69	.66	.72	.68	.65	.64
9.0	.72	.67	.63	.72	.67	.63	.71	.66	.63	.70	.66	.63	.69	.65	.63	.61
10.0	.69	.64	.60	.69	.64	.60	.68	.63	.60	.67	.63	.60	.66	.63	.60	.59



C Range: 0 - 360DEG
 C Interval: 22.5DEG
 Test Speed: HIGH
 Temperature:25.3DEG
 Operators:
 Test Date:2021-10-19

□ Range: 0 - 90DEG
 □ Interval: 1.0DEG
 Test System:EVERFINE GO-SPEX500_V1 SYSTEM V2.00.421
 Humidity:65.0%
 Test Distance:3.080m [K=1.0000]
 Remarks:

WEC AND CCEC

Test:U:120.05V I:0.1072A P:12.674W PF:0.9476 Freq:59.98Hz Lamp Flux:950.823x1 lm		
NAME:LED-2-S15W-L5CCTWH-T	TYPE:	WEIGHT:
SPEC.:3500K 90	DIM.:	SERIAL No.:
MFR.:	SUR.:	Shielding Angle:

<input type="checkbox"/> cc	80%	70%	50%	30%	10%	0
<input type="checkbox"/> w	50% 30% 10%	50% 30% 10%	50% 30% 10%	50% 30% 10%	50% 30% 10%	0
<input type="checkbox"/> fc	20%	20%	20%	20%	20%	0
RCR	RCR:Room Cavity Ratio		Wall Exitance Coefficients (WEC)			
0.0						
1.0	.169 .096 .030	.162 .093 .029	.150 .086 .027	.138 .080 .026	.128 .074 .024	
2.0	.160 .088 .027	.155 .085 .026	.144 .080 .025	.134 .075 .024	.125 .071 .022	
3.0	.151 .080 .024	.146 .078 .024	.137 .075 .023	.129 .071 .022	.122 .067 .021	
4.0	.143 .074 .022	.139 .073 .021	.131 .069 .021	.124 .067 .020	.117 .064 .019	
5.0	.135 .069 .020	.132 .068 .020	.125 .065 .019	.119 .063 .019	.113 .060 .018	
6.0	.128 .064 .018	.125 .063 .018	.119 .061 .018	.114 .059 .017	.109 .057 .017	
7.0	.122 .060 .017	.119 .059 .017	.114 .058 .017	.109 .056 .016	.105 .054 .016	
8.0	.116 .057 .016	.114 .056 .016	.109 .055 .016	.105 .053 .015	.101 .052 .015	
9.0	.111 .054 .015	.109 .053 .015	.105 .052 .015	.101 .051 .015	.098 .050 .014	
10.0	.106 .051 .014	.104 .050 .014	.101 .049 .014	.097 .048 .014	.094 .047 .014	

<input type="checkbox"/> cc	80%	70%	50%	30%	10%	0
<input type="checkbox"/> w	50% 30% 10%	50% 30% 10%	50% 30% 10%	50% 30% 10%	50% 30% 10%	0
<input type="checkbox"/> fc	20%	20%	20%	20%	20%	0
RCR	RCR:Room Cavity Ratio		Ceiling Cavity Exitance Coefficients (CCEC)			
0.0	.190 .190 .190	.163 .163 .163	.111 .111 .111	.064 .064 .064	.020 .020 .020	
1.0	.171 .157 .145	.146 .135 .125	.100 .093 .087	.057 .054 .050	.018 .017 .016	
2.0	.155 .133 .114	.132 .114 .098	.091 .079 .069	.052 .046 .040	.017 .015 .013	
3.0	.142 .113 .091	.121 .098 .079	.083 .068 .055	.048 .040 .033	.015 .013 .011	
4.0	.131 .099 .074	.112 .085 .064	.077 .059 .045	.045 .035 .027	.014 .011 .009	
5.0	.121 .087 .061	.104 .075 .053	.072 .052 .038	.042 .031 .022	.013 .010 .007	
6.0	.113 .077 .051	.097 .067 .045	.067 .047 .032	.039 .028 .019	.013 .009 .006	
7.0	.106 .070 .044	.091 .060 .038	.063 .042 .027	.037 .025 .016	.012 .008 .005	
8.0	.100 .063 .038	.086 .055 .033	.060 .038 .023	.035 .023 .014	.011 .007 .005	
9.0	.095 .058 .033	.082 .050 .028	.057 .035 .020	.033 .021 .012	.011 .007 .004	
10.0	.090 .053 .029	.078 .046 .025	.054 .033 .018	.031 .019 .011	.010 .006 .004	

C Range: 0 - 360DEG
 C Interval: 22.5DEG
 Test Speed: HIGH
 Temperature:25.3DEG
 Operators:
 Test Date:2021-10-19

Range: 0 - 90DEG
 Interval: 1.0DEG
 Test System:EVERFINE GO-SPEX500_V1 SYSTEM V2.00.421
 Humidity:65.0%
 Test Distance:3.080m [K=1.0000]
 Remarks:

UGR(Unified Glare Rating) Table

Test:U:120.05V I:0.1072A P:12.674W PF:0.9476 Freq:59.98Hz Lamp Flux:950.823x1 lm										
NAME:LED-2-S15W-L5CCTWH-T					TYPE:			WEIGHT:		
SPEC.:3500K 90					DIM.:			SERIAL No.:		
MFR.:					SUR.:			Shielding Angle:		
ceiling/cavity	0.7	0.7	0.5	0.5	0.3	0.7	0.7	0.5	0.5	0.3
walls	0.5	0.3	0.5	0.3	0.3	0.5	0.3	0.5	0.3	0.3
working plane	0.2	0.2	0.2	0.2	0.2	0.2	0.2	0.2	0.2	0.2
Room dimensions	Viewed crosswise					Viewed endwise				
x = 2H y = 2H	4.9	5.7	5.1	5.9	6.1	5.1	5.9	5.3	6.1	6.2
3H	5.5	6.3	5.8	6.5	6.7	5.6	6.4	5.9	6.6	6.8
4H	5.8	6.5	6.0	6.7	6.9	5.7	6.5	6.0	6.7	6.9
6H	5.9	6.6	6.2	6.9	7.1	5.7	6.4	6.0	6.6	6.9
8H	5.9	6.6	6.2	6.8	7.1	5.7	6.3	6.0	6.6	6.8
12H	5.9	6.5	6.2	6.8	7.1	5.6	6.3	5.9	6.5	6.8
4H 2H	5.1	5.9	5.4	6.1	6.3	5.3	6.0	5.6	6.3	6.5
3H	5.9	6.6	6.2	6.8	7.1	6.0	6.6	6.3	6.9	7.2
4H	6.3	6.9	6.6	7.2	7.5	6.1	6.7	6.5	7.0	7.3
6H	6.5	7.0	6.9	7.4	7.7	6.2	6.7	6.5	7.0	7.4
8H	6.5	7.0	6.9	7.3	7.7	6.1	6.6	6.5	6.9	7.3
12H	6.5	6.9	6.9	7.3	7.7	6.1	6.5	6.5	6.9	7.3
8H 4H	6.3	6.8	6.7	7.1	7.5	6.2	6.7	6.6	7.0	7.4
6H	6.6	7.0	7.0	7.4	7.8	6.2	6.6	6.6	7.0	7.4
8H	6.6	7.0	7.1	7.4	7.8	6.2	6.5	6.6	6.9	7.4
12H	6.6	6.9	7.1	7.4	7.8	6.1	6.4	6.6	6.9	7.3
12H 4H	6.3	6.7	6.7	7.1	7.5	6.2	6.6	6.6	7.0	7.4
6H	6.6	6.9	7.0	7.3	7.8	6.2	6.5	6.6	7.0	7.4
8H	6.6	6.9	7.1	7.3	7.8	6.1	6.4	6.6	6.9	7.4
Variations with the observer position at spacings:										
S = 1.0H	+ 0.7 / - 0.8					+ 0.7 / - 0.8				
1.5H	+ 1.0 / - 0.4					+ 0.8 / - 0.5				
2.0H	+ 0.9 / - 0.8					+ 1.1 / - 0.9				

CIE Pub.117, 950.8 lm Total Lamp Luminous Flux Correct (8log(F/F0) = -0.2)
 Area: 0.111111 m2

C Range: 0 - 360DEG
 C Interval: 22.5DEG
 Test Speed: HIGH
 Temperature:25.3DEG
 Operators:
 Test Date:2021-10-19

Range: 0 - 90DEG
 Interval: 1.0DEG
 Test System:EVERFINE GO-SPEX500_V1 SYSTEM V2.00.421
 Humidity:65.0%
 Test Distance:3.080m [K=1.0000]
 Remarks:

UTILIZATION FACTORS TABLE

Test:U:120.05V I:0.1072A P:12.674W PF:0.9476 Freq:59.98Hz Lamp Flux:950.823x1 lm		
NAME: LED-2-S15W-L5CCTWH-T	TYPE:	WEIGHT:
SPEC.:3500K 90	DIM.:	SERIAL No.:
MFR.:	SUR.:	Shielding Angle:

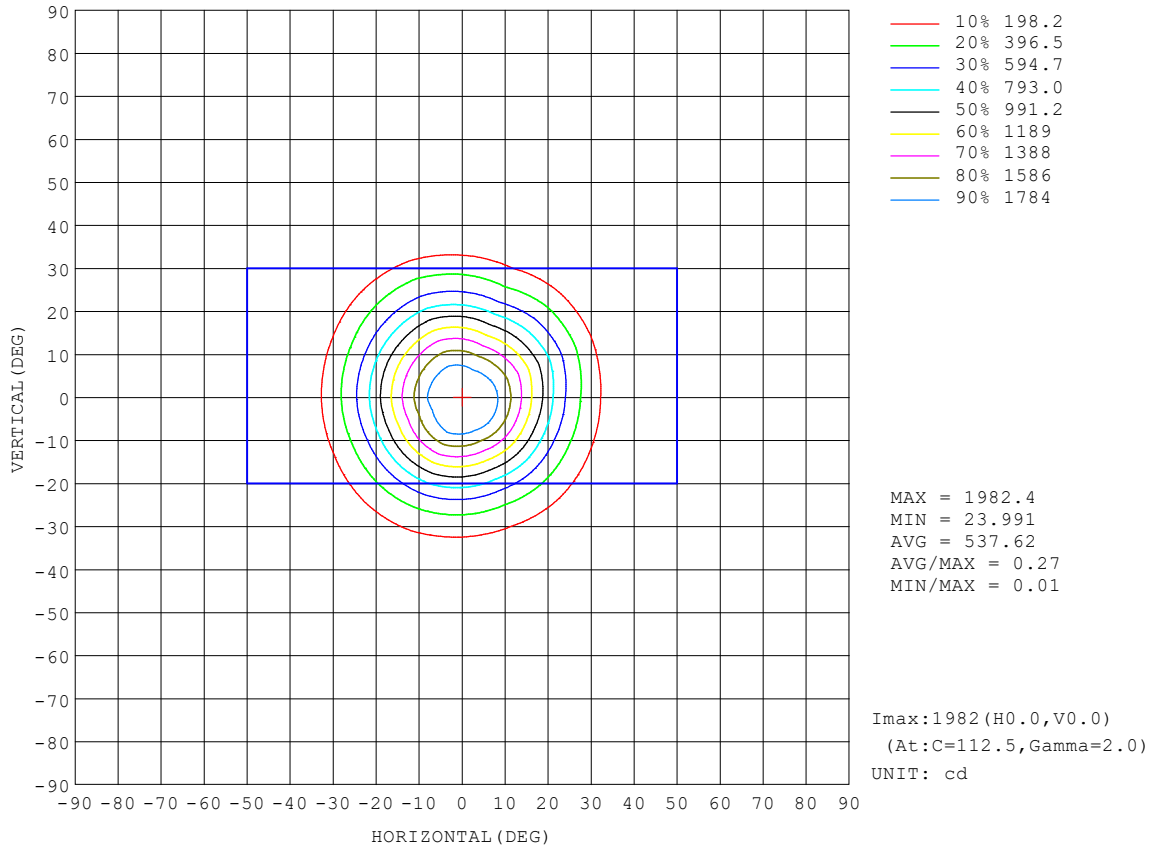
REFLECTANCE										
Ceiling	0.8	0.8	0.8	0.7	0.7	0.7	0.5	0.5	0.5	0
Walls	0.7	0.5	0.3	0.7	0.5	0.3	0.7	0.5	0.3	0
Working plane	0.2	0.2	0.2	0.2	0.2	0.2	0.2	0.2	0.2	0
ROOM INDEX	UTILIZATION FACTORS (PERCENT) $k(RI) \times RCR = 5$									
k = 0.60	86	80	76	86	80	76	85	79	76	72
0.80	94	88	84	93	87	84	92	87	83	80
1.00	98	93	89	97	92	88	96	92	88	84
1.25	102	97	93	101	96	93	99	95	92	88
1.50	105	100	97	104	100	96	102	98	95	91
2.00	108	104	100	107	103	100	104	101	98	93
2.50	110	106	103	108	105	102	105	102	100	94
3.00	111	108	105	110	106	104	106	104	102	95
4.00	114	111	108	111	109	107	108	106	104	97
5.00	115	113	111	113	111	109	109	107	106	98
ROOM INDEX	UF(total)									Direct
According to DIN EN 13032-2 2004			Suspended				SHRNOM = 1.25			

C Range: 0 - 360DEG
 C Interval: 22.5DEG
 Test Speed: HIGH
 Temperature:25.3DEG
 Operators:
 Test Date:2021-10-19

Range: 0 - 90DEG
 Interval: 1.0DEG
 Test System:EVERFINE GO-SPEX500_V1 SYSTEM V2.00.421
 Humidity:65.0%
 Test Distance:3.080m [K=1.0000]
 Remarks:

ISOCANDELA DIAGRAM

Test:U:120.05V I:0.1072A P:12.674W PF:0.9476 Freq:59.98Hz Lamp Flux:950.823x1 lm		
NAME: LED-2-S15W-L5CCTWH-T	TYPE:	WEIGHT:
SPEC.:3500K 90	DIM.:	SERIAL No.:
MFR.:	SUR.:	Shielding Angle:

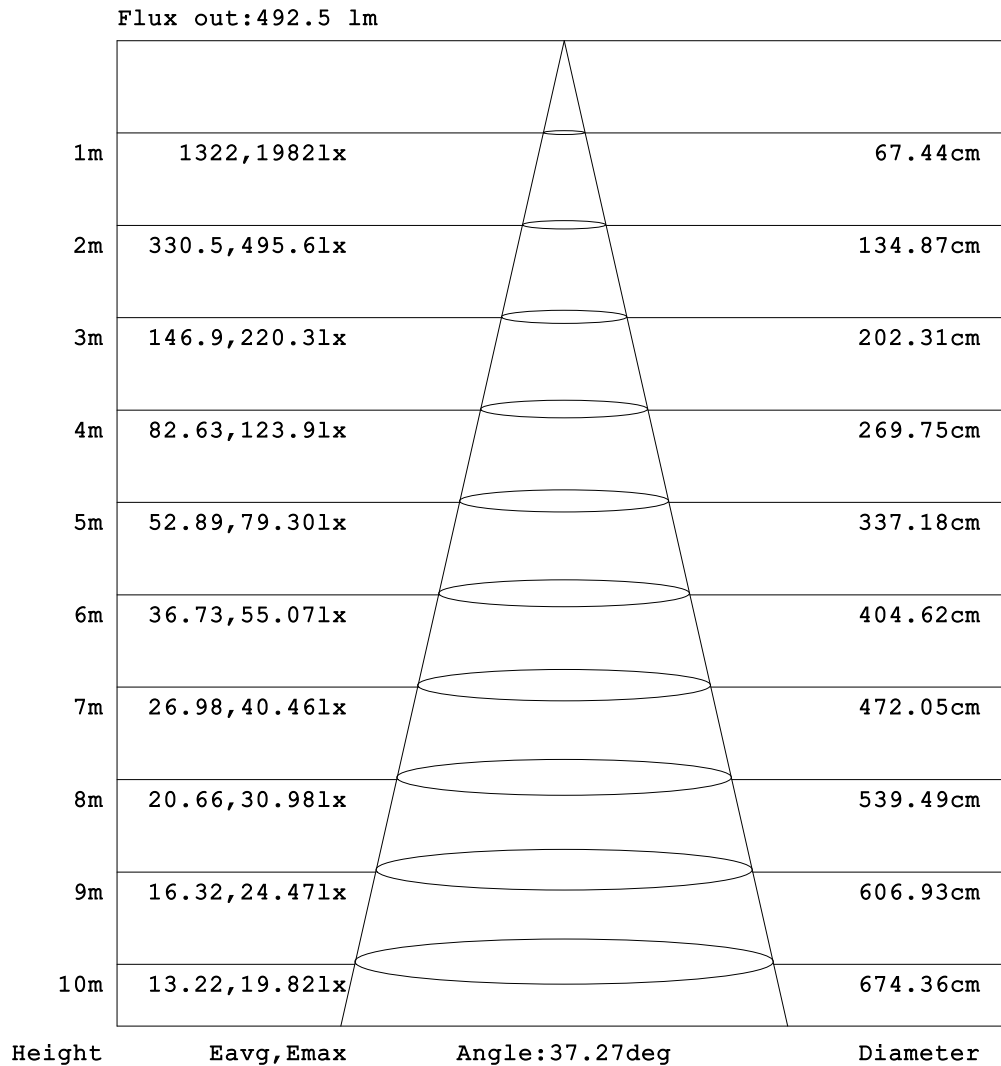


C Range: 0 - 360DEG
 C Interval: 22.5DEG
 Test Speed: HIGH
 Temperature:25.3DEG
 Operators:
 Test Date:2021-10-19

Range: 0 - 90DEG
 Interval: 1.0DEG
 Test System:EVERFINE GO-SPEX500_V1 SYSTEM V2.00.421
 Humidity:65.0%
 Test Distance:3.080m [K=1.0000]
 Remarks:

AAI Figure

Test:U:120.05V I:0.1072A P:12.674W PF:0.9476 Freq:59.98Hz Lamp Flux:950.823x1 lm		
NAME: LED-2-S15W-L5CCTWH-T	TYPE:	WEIGHT:
SPEC.:3500K 90	DIM.:	SERIAL No.:
MFR.:	SUR.:	Shielding Angle:



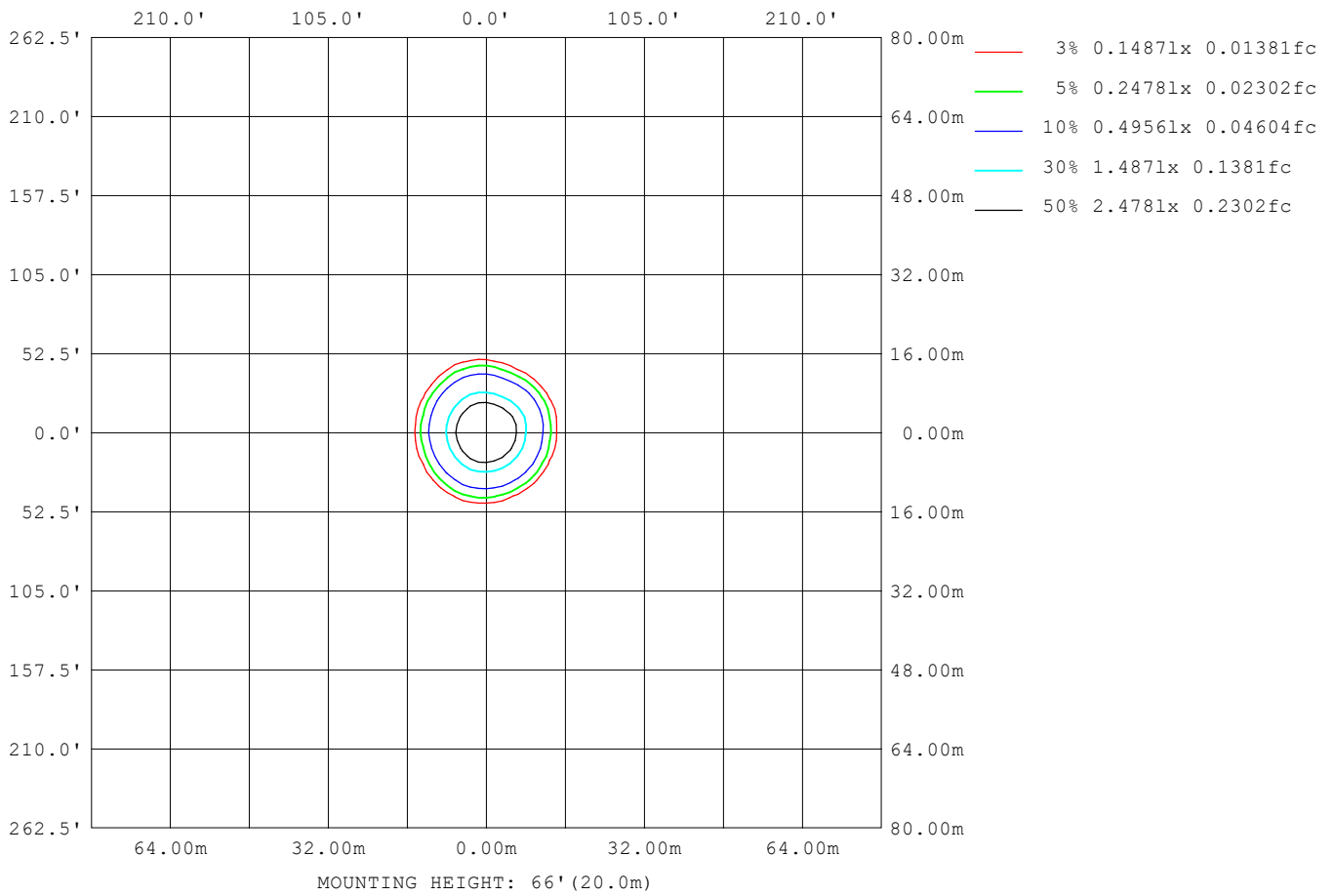
Note:The Curves indicate the illuminated area and the average illumination when the luminaire is at different distance.

C Range: 0 - 360DEG
 C Interval: 22.5DEG
 Test Speed: HIGH
 Temperature:25.3DEG
 Operators:
 Test Date:2021-10-19

Range: 0 - 90DEG
 Interval: 1.0DEG
 Test System:EVERFINE GO-SPEX500_V1 SYSTEM V2.00.421
 Humidity:65.0%
 Test Distance:3.080m [K=1.0000]
 Remarks:

ISOLUX DIAGRAM

Test:U:120.05V I:0.1072A P:12.674W PF:0.9476 Freq:59.98Hz Lamp Flux:950.823x1 lm		
NAME:LED-2-S15W-L5CCTWH-T	TYPE:	WEIGHT:
SPEC.:3500K 90	DIM.:	SERIAL No.:
MFR.:	SUR.:	Shielding Angle:



C Range: 0 - 360DEG
 C Interval: 22.5DEG
 Test Speed: HIGH
 Temperature:25.3DEG
 Operators:
 Test Date:2021-10-19

Range: 0 - 90DEG
 Interval: 1.0DEG
 Test System:EVERFINE GO-SPEX500_V1 SYSTEM V2.00.421
 Humidity:65.0%
 Test Distance:3.080m [K=1.0000]
 Remarks:

LED Avg.L Report

Test:U:120.05V I:0.1072A P:12.674W PF:0.9476 Freq:59.98Hz Lamp Flux:950.823x1 lm		
NAME: LED-2-S15W-L5CCTWH-T	TYPE:	WEIGHT:
SPEC.:3500K 90	DIM.:	SERIAL No.:
MFR.:	SUR.:	Shielding Angle:

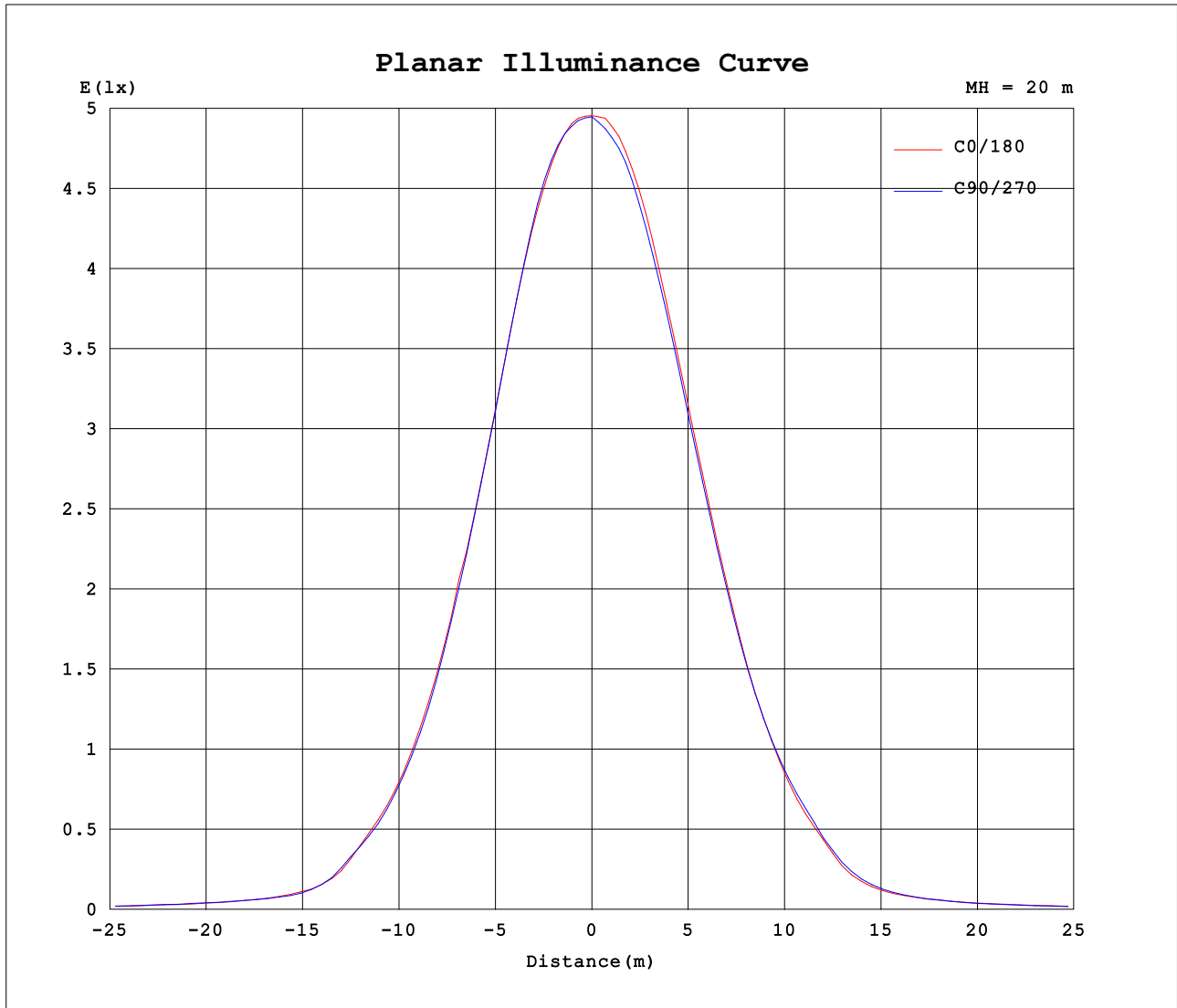
AvgL	cd/m2
L_0~180 (65) av	301
L_0~180 (75) av	227
L_0~180 (85) av	75
L_90~270 (65) av	258
L_90~270 (75) av	123
L_90~270 (85) av	9
L_45 (65) av	286
L_45 (75) av	168
L_45 (85) av	9

Standard: GB/T 29293-2012

C Range: 0 - 360DEG
 C Interval: 22.5DEG
 Test Speed: HIGH
 Temperature:25.3DEG
 Operators:
 Test Date:2021-10-19

Range: 0 - 90DEG
 Interval: 1.0DEG
 Test System:EVERFINE GO-SPEX500_V1 SYSTEM V2.00.421
 Humidity:65.0%
 Test Distance:3.080m [K=1.0000]
 Remarks:

Planar Illuminance Curve



C Range: 0 - 360DEG
 C Interval: 22.5DEG
 Test Speed: HIGH
 Temperature: 25.3DEG
 Operators:
 Test Date: 2021-10-19

Range: 0 - 90DEG
 Interval: 1.0DEG
 Test System: EVERFINE GO-SPEX500_V1 SYSTEM V2.00.421
 Humidity: 65.0%
 Test Distance: 3.080m [K=1.0000]
 Remarks:

LUMINOUS DISTRIBUTION INTENSITY DATA

Test:U:120.05V I:0.1072A P:12.674W PF:0.9476 Freq:59.98Hz Lamp Flux:950.823x1 lm		
NAME: LED-2-S15W-L5CCTWH-T	TYPE:	WEIGHT:
SPEC.:3500K 90	DIM.:	SERIAL No.:
MFR.:	SUR.:	Shielding Angle:

Table--1

UNIT: cd

C (DEG) \ □ (DEG)	0	22.5	45	67.5	90	112.5	135	157.5	180	202.5	225	247.5	270	292.5	315	337.5			
0	1972	1972	1972	1972	1972	1972	1972	1972	1972	1972	1972	1972	1972	1972	1972	1972			
5	1915	1922	1917	1916	1923	1948	1926	1901	1905	1897	1892	1892	1881	1875	1891	1916			
10	1673	1678	1674	1659	1679	1723	1686	1651	1658	1649	1649	1662	1631	1611	1645	1683			
15	1280	1263	1263	1242	1279	1332	1314	1284	1297	1299	1303	1322	1277	1230	1278	1333			
20	876	847	849	829	866	910	904	888	908	915	921	947	895	848	907	952			
25	529	503	502	488	515	546	547	541	563	567	588	609	567	518	581	605			
30	294	280	280	268	283	297	299	295	316	326	354	370	333	285	331	338			
35	114	105	104	102	114	132	128	121	128	131	145	158	138	114	128	133			
40	64.3	61.9	61.8	61.5	62.5	64.6	66.9	66.4	68.1	69.5	74.1	78.4	70.6	65.3	69.8	70.3			
45	45.7	45.7	46.1	46.3	48.0	50.5	49.6	47.0	47.0	46.5	46.7	47.1	44.3	44.0	46.6	47.3			
50	35.5	35.9	36.3	36.2	37.5	38.5	37.6	36.2	35.9	35.8	35.9	35.1	33.7	33.5	34.9	36.0			
55	26.2	26.4	26.6	26.6	28.1	29.1	28.1	26.5	26.3	26.1	25.6	23.6	22.7	22.7	25.3	26.5			
60	19.0	19.3	19.6	19.8	20.3	20.7	20.4	19.4	19.0	18.7	17.6	16.2	15.1	15.5	17.7	19.3			
65	14.2	14.5	14.8	14.8	14.5	14.7	14.8	14.4	14.1	13.6	12.1	10.5	9.65	10.02	12.1	14.2			
70	10.0	10.3	10.4	9.73	9.13	9.31	9.79	10.02	9.90	9.11	7.51	6.22	5.49	5.76	7.38	9.54			
75	6.58	6.82	6.18	5.26	4.70	4.91	5.54	6.21	6.47	5.41	3.95	2.94	2.40	2.54	3.67	5.50			
80	3.76	3.57	2.54	1.70	1.32	1.48	2.11	3.00	3.63	2.44	1.24	0.59	0.36	0.39	0.96	2.29			
85	0.65	0.82	0.09	0.11	0.10	0.08	0.06	0.67	0.79	0.41	0.08	0.08	0.08	0.08	0.12	0.32			
90	0.03	0.03	0.03	0.02	0.02	0.02	0.02	0.02	0.04	0.04	0.03	0.03	0.03	0.03	0.05	0.04			

C Range: 0 - 360DEG
 C Interval: 22.5DEG
 Test Speed: HIGH
 Temperature:25.3DEG
 Operators:
 Test Date:2021-10-19

□ Range: 0 - 90DEG
 □ Interval: 1.0DEG
 Test System:EVERFINE GO-SPEX500_V1 SYSTEM V2.00.421
 Humidity:65.0%
 Test Distance:3.080m [K=1.0000]
 Remarks: