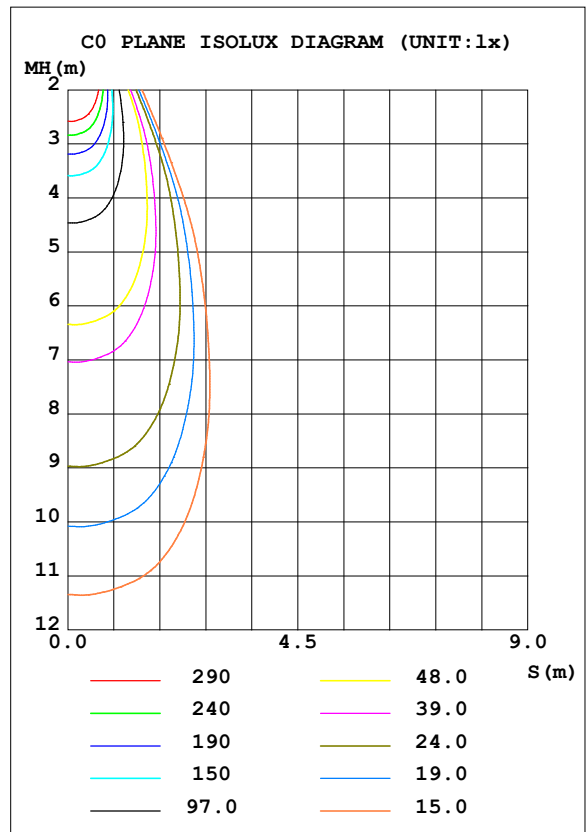
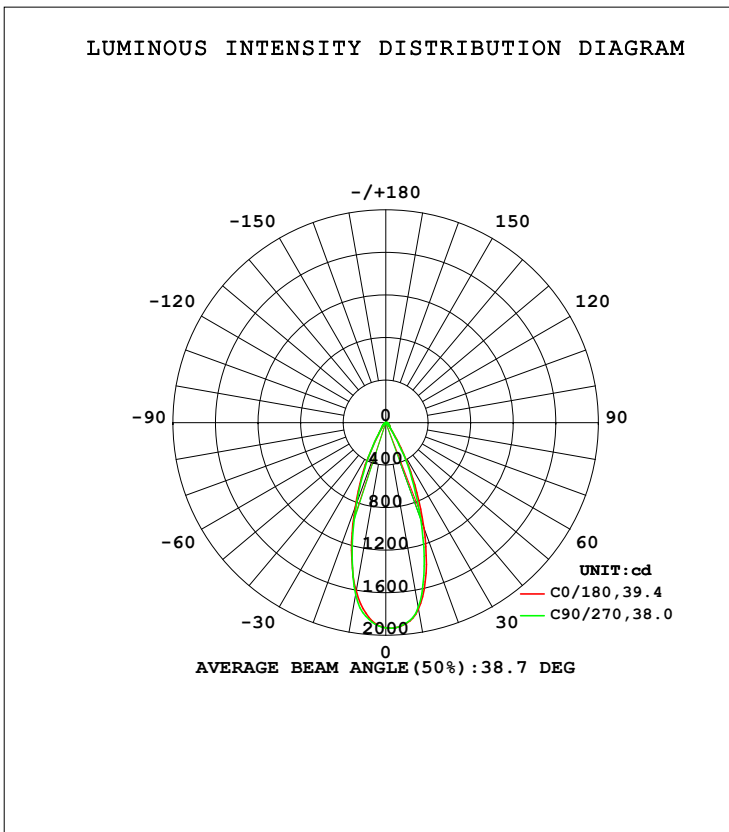


LUMINAIRE PHOTOMETRIC TEST REPORT

Test:U:119.96V I:0.1159A P:13.669W PF:0.9444 Freq:59.98Hz Lamp Flux:957.66x1 lm		
NAME: LED-2-S15W-5CCT-2RRWH-2RTWH	TYPE:	WEIGHT:
SPEC.:5000K 90	DIM.:	SERIAL No.:
MFR.:	SUR.:	Shielding Angle:

DATA OF LAMP		PHOTOMETRIC DATA Eff: 70.06 lm/W			
MODEL		I _{max} (cd)	1938	S/MH (C0/180)	0.61
NOMINAL POWER (W)	15	LOR (%)	100.0	S/MH (C90/270)	0.59
RATED VOLTAGE (V)	120	TOTAL FLUX (lm)	957.66	<input type="checkbox"/> UP, DN (C0-180)	0.0, 53.7
NOMINAL FLUX (lm)	957.66	CIE CLASS	DIRECT	<input type="checkbox"/> UP, DN (C180-360)	0.0, 46.3
LAMPS INSIDE	1	<input type="checkbox"/> up (%)	0.0	CIBSE SHR NOM	0.50
TEST VOLTAGE (V)	120	<input type="checkbox"/> down (%)	100.0	CIBSE SHR MAX	0.65



C Range: 0 - 360DEG
 C Interval: 22.5DEG
 Test Speed: HIGH
 Temperature: 25.3DEG
 Operators:
 Test Date: 2021-11-15

Range: 0 - 90DEG
 Interval: 1.0DEG
 Test System: EVERFINE GO-SPEX500_V1 SYSTEM V2.00.421
 Humidity: 65.0%
 Test Distance: 3.080m [K=1.0000]
 Remarks: PORTER

ZONAL FLUX DIAGRAM

ZONAL FLUX DIAGRAM:

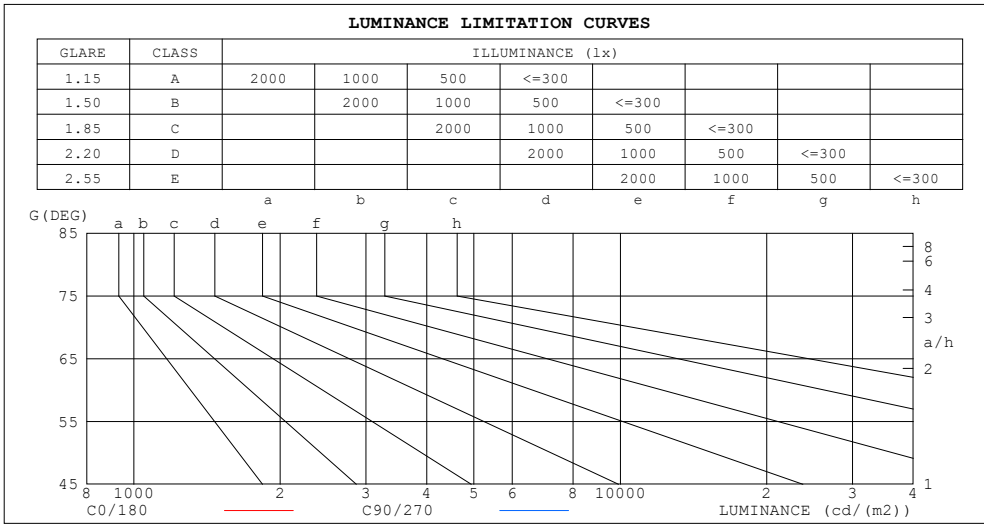
mm	C0	C45	C90	C135	C180	C225	C270	C315	mm	□ zone	□ total	%lum,lamp
10	1780	1849	1765	1644	1609	1582	1641	1682	0- 10	173.9	173.9	18.2,18.2
20	1052	1111	962.5	888.6	843.3	686.6	803.0	952.2	10- 20	360.5	534.4	55.8,55.8
30	333.5	498.5	300.3	246.1	194.1	167.0	211.7	269.5	20- 30	259.6	793.9	82.9,82.9
40	68.52	81.21	65.87	59.19	57.33	57.80	60.87	65.41	30- 40	83.92	877.9	91.7,91.7
50	36.00	34.91	33.04	31.67	32.09	33.15	34.67	35.51	40- 50	35.49	913.4	95.4,95.4
60	18.31	17.46	16.80	16.97	17.99	18.96	19.38	19.00	50- 60	22.14	935.5	97.7,97.7
70	9.738	9.223	8.918	9.035	9.723	10.49	10.69	10.24	60- 70	13.48	949.0	99.1,99.1
80	4.103	3.831	3.429	3.639	3.963	4.231	3.912	4.170	70- 80	7.076	956.1	99.8,99.8
90	0.0357	0.0411	0.0367	0.0331	0.0447	0.0434	0.0417	0.0417	80- 90	1.598	957.7	100,100
100									90-100			
110									100-110			
120									110-120			
130									120-130			
140									130-140			
150									140-150			
160									150-160			
170									160-170			
180									170-180			
DEG	LUMINOUS INTENSITY:cd									UNIT:lm		

C Range: 0 - 360DEG
 C Interval: 22.5DEG
 Test Speed: HIGH
 Temperature:25.3DEG
 Operators:
 Test Date:2021-11-15

□ Range: 0 - 90DEG
 □ Interval: 1.0DEG
 Test System:EVERFINE GO-SPEX500_V1 SYSTEM V2.00.421
 Humidity:65.0%
 Test Distance:3.080m [K=1.0000]
 Remarks: PORTER

LUMINANCE LIMITATION CURVES

Test:U:119.96V I:0.1159A P:13.669W PF:0.9444 Freq:59.98Hz Lamp Flux:957.66x1 lm		
NAME: LED-2-S15W-5CCT-2RRWH-2RTWH	TYPE:	WEIGHT:
SPEC.:5000K 90	DIM.:	SERIAL No.:
MFR.:	SUR.:	Shielding Angle:



LUMINANCE cd/(m2)		
G (DEG)	C0/180	C90/270
85	84	81
80	213	178
75	231	210
70	256	235
65	288	263
60	330	302
55	397	362
50	504	463
45	596	552

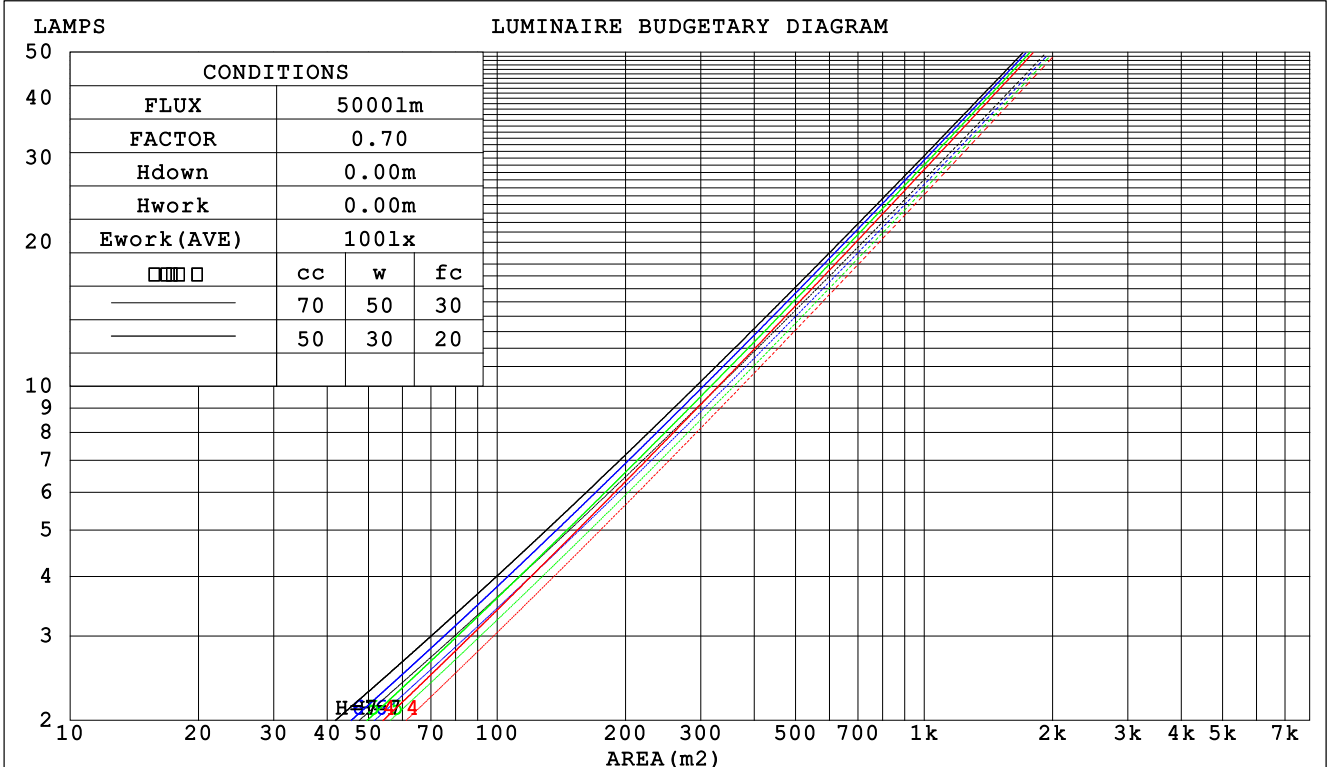
C Range: 0 - 360DEG
 C Interval: 22.5DEG
 Test Speed: HIGH
 Temperature:25.3DEG
 Operators:
 Test Date:2021-11-15

Range: 0 - 90DEG
 Interval: 1.0DEG
 Test System:EVERFINE GO-SPEX500_V1 SYSTEM V2.00.421
 Humidity:65.0%
 Test Distance:3.080m [K=1.0000]
 Remarks: PORTER

CU AND LUMINAIRE BUDGETARY ESTIMATE DIAGRAM

Test:U:119.96V I:0.1159A P:13.669W PF:0.9444 Freq:59.98Hz Lamp Flux:957.66x1 lm		
NAME: LED-2-S15W-5CCT-2RRWH-2RTWH	TYPE:	WEIGHT:
SPEC.:5000K 90	DIM.:	SERIAL No.:
MFR.:	SUR.:	Shielding Angle:

□cc	80%			70%			50%			30%			10%			0
□w	50%	30%	10%	50%	30%	10%	50%	30%	10%	50%	30%	10%	50%	30%	10%	0
□fc	20%			20%			20%			20%			20%			0
RCR	RCR:Room Cavity Ratio						Coefficients of Utilization(CU)									
0.0	1.19	1.19	1.19	1.16	1.16	1.16	1.11	1.11	1.11	1.06	1.06	1.06	1.02	1.02	1.02	1.00
1.0	1.11	1.09	1.07	1.09	1.07	1.05	1.05	1.03	1.02	1.01	.00	.99	.98	.97	.96	.94
2.0	1.04	1.00	.97	1.02	.99	.96	.99	.96	.94	.96	.94	.92	.93	.92	.90	.88
3.0	.98	.93	.90	.97	.92	.89	.94	.90	.87	.92	.89	.86	.89	.87	.85	.83
4.0	.92	.87	.83	.91	.87	.83	.89	.85	.82	.87	.84	.81	.85	.83	.80	.79
5.0	.88	.82	.78	.87	.82	.78	.85	.81	.77	.83	.80	.77	.82	.79	.76	.75
6.0	.83	.78	.74	.82	.77	.74	.81	.76	.73	.80	.76	.73	.78	.75	.72	.71
7.0	.79	.74	.70	.78	.73	.70	.77	.73	.69	.76	.72	.69	.75	.71	.69	.67
8.0	.76	.70	.67	.75	.70	.66	.74	.69	.66	.73	.69	.66	.72	.68	.66	.64
9.0	.72	.67	.63	.72	.67	.63	.71	.66	.63	.70	.66	.63	.69	.65	.63	.62
10.0	.69	.64	.61	.69	.64	.61	.68	.63	.60	.67	.63	.60	.67	.63	.60	.59



C Range: 0 - 360DEG
 C Interval: 22.5DEG
 Test Speed: HIGH
 Temperature:25.3DEG
 Operators:
 Test Date:2021-11-15

□ Range: 0 - 90DEG
 □ Interval: 1.0DEG
 Test System:EVERFINE GO-SPEX500_V1 SYSTEM V2.00.421
 Humidity:65.0%
 Test Distance:3.080m [K=1.0000]
 Remarks: PORTER

WEC AND CCEC

Test:U:119.96V I:0.1159A P:13.669W PF:0.9444 Freq:59.98Hz Lamp Flux:957.66x1 lm		
NAME: LED-2-S15W-5CCT-2RRWH-2RTWH	TYPE:	WEIGHT:
SPEC.:5000K 90	DIM.:	SERIAL No.:
MFR.:	SUR.:	Shielding Angle:

<input type="checkbox"/> cc	80%	70%	50%	30%	10%	0
<input type="checkbox"/> w	50% 30% 10%	50% 30% 10%	50% 30% 10%	50% 30% 10%	50% 30% 10%	0
<input type="checkbox"/> fc	20%	20%	20%	20%	20%	0
RCR	RCR:Room Cavity Ratio		Wall Exitance Coefficients (WEC)			
0.0						
1.0	.171 .097 .031	.164 .093 .030	.151 .087 .028	.140 .081 .026	.129 .075 .024	
2.0	.161 .088 .027	.155 .086 .026	.145 .080 .025	.135 .076 .024	.126 .071 .022	
3.0	.151 .081 .024	.147 .079 .024	.138 .075 .023	.129 .071 .022	.122 .067 .021	
4.0	.143 .074 .022	.139 .073 .021	.131 .069 .021	.124 .067 .020	.117 .064 .019	
5.0	.135 .069 .020	.131 .067 .020	.125 .065 .019	.119 .063 .019	.113 .060 .018	
6.0	.128 .064 .018	.125 .063 .018	.119 .061 .018	.114 .059 .017	.109 .057 .017	
7.0	.122 .060 .017	.119 .059 .017	.114 .058 .017	.109 .056 .016	.105 .054 .016	
8.0	.116 .057 .016	.114 .056 .016	.109 .054 .016	.105 .053 .015	.101 .052 .015	
9.0	.111 .054 .015	.109 .053 .015	.105 .052 .015	.101 .051 .014	.097 .049 .014	
10.0	.106 .051 .014	.104 .050 .014	.101 .049 .014	.097 .048 .014	.094 .047 .014	

<input type="checkbox"/> cc	80%	70%	50%	30%	10%	0
<input type="checkbox"/> w	50% 30% 10%	50% 30% 10%	50% 30% 10%	50% 30% 10%	50% 30% 10%	0
<input type="checkbox"/> fc	20%	20%	20%	20%	20%	0
RCR	RCR:Room Cavity Ratio		Ceiling Cavity Exitance Coefficients (CCEC)			
0.0	.190 .190 .190	.163 .163 .163	.111 .111 .111	.064 .064 .064	.020 .020 .020	
1.0	.171 .157 .145	.146 .135 .125	.100 .093 .087	.057 .054 .050	.018 .017 .016	
2.0	.155 .133 .114	.133 .114 .098	.091 .079 .069	.052 .046 .040	.017 .015 .013	
3.0	.142 .113 .091	.121 .098 .079	.083 .068 .055	.048 .040 .033	.015 .013 .011	
4.0	.131 .099 .074	.112 .085 .064	.077 .059 .045	.045 .035 .027	.014 .011 .009	
5.0	.121 .087 .061	.104 .075 .053	.072 .052 .038	.042 .031 .022	.013 .010 .007	
6.0	.113 .077 .051	.097 .067 .045	.067 .047 .032	.039 .028 .019	.013 .009 .006	
7.0	.106 .069 .044	.091 .060 .038	.063 .042 .027	.037 .025 .016	.012 .008 .005	
8.0	.100 .063 .038	.086 .055 .033	.060 .038 .023	.035 .023 .014	.011 .007 .005	
9.0	.095 .058 .033	.082 .050 .028	.057 .035 .020	.033 .021 .012	.011 .007 .004	
10.0	.090 .053 .029	.078 .046 .025	.054 .033 .018	.031 .019 .011	.010 .006 .004	

C Range: 0 - 360DEG
 C Interval: 22.5DEG
 Test Speed: HIGH
 Temperature:25.3DEG
 Operators:
 Test Date:2021-11-15

Range: 0 - 90DEG
 Interval: 1.0DEG
 Test System:EVERFINE GO-SPEX500_V1 SYSTEM V2.00.421
 Humidity:65.0%
 Test Distance:3.080m [K=1.0000]
 Remarks: PORTER

UGR(Unified Glare Rating) Table

Test:U:119.96V I:0.1159A P:13.669W PF:0.9444 Freq:59.98Hz Lamp Flux:957.66x1 lm		
NAME: LED-2-S15W-5CCT-2RRWH-2RTWH	TYPE:	WEIGHT:
SPEC.:5000K 90	DIM.:	SERIAL No.:
MFR.:	SUR.:	Shielding Angle:

ceiling/cavity	0.7	0.7	0.5	0.5	0.3	0.7	0.7	0.5	0.5	0.3
walls	0.5	0.3	0.5	0.3	0.3	0.5	0.3	0.5	0.3	0.3
working plane	0.2	0.2	0.2	0.2	0.2	0.2	0.2	0.2	0.2	0.2
Room dimensions	Viewed crosswise					Viewed endwise				
x = 2H y = 2H	5.7	6.5	5.9	6.7	6.8	5.6	6.5	5.8	6.6	6.8
3H	6.1	6.9	6.3	7.0	7.2	6.0	6.7	6.2	6.9	7.1
4H	6.2	7.0	6.5	7.2	7.4	6.1	6.9	6.4	7.1	7.3
6H	6.4	7.1	6.7	7.3	7.6	6.2	6.9	6.5	7.2	7.4
8H	6.4	7.1	6.7	7.3	7.6	6.2	6.9	6.5	7.2	7.4
12H	6.4	7.0	6.7	7.3	7.6	6.2	6.9	6.5	7.1	7.4
4H 2H	5.7	6.5	6.0	6.7	6.9	5.7	6.4	6.0	6.7	6.9
3H	6.3	6.9	6.6	7.2	7.5	6.2	6.8	6.5	7.1	7.4
4H	6.5	7.1	6.9	7.4	7.7	6.4	7.0	6.7	7.3	7.6
6H	6.8	7.3	7.2	7.6	8.0	6.6	7.1	7.0	7.4	7.8
8H	6.8	7.3	7.2	7.7	8.0	6.6	7.1	7.0	7.5	7.8
12H	6.8	7.3	7.2	7.6	8.0	6.6	7.1	7.0	7.4	7.8
8H 4H	6.6	7.1	7.0	7.4	7.8	6.4	6.9	6.8	7.3	7.7
6H	6.9	7.3	7.3	7.7	8.1	6.7	7.1	7.1	7.5	7.9
8H	7.0	7.4	7.5	7.8	8.2	6.8	7.1	7.2	7.6	8.0
12H	7.0	7.4	7.5	7.8	8.3	6.8	7.1	7.3	7.5	8.0
12H 4H	6.5	7.0	7.0	7.4	7.8	6.4	6.9	6.8	7.2	7.6
6H	6.9	7.3	7.3	7.7	8.1	6.7	7.1	7.2	7.5	7.9
8H	7.0	7.3	7.5	7.8	8.3	6.8	7.1	7.3	7.5	8.0
Variations with the observer position at spacings:										
S = 1.0H	+ 0.8 / - 0.9					+ 1.0 / - 1.1				
1.5H	+ 1.3 / - 0.6					+ 1.5 / - 0.8				
2.0H	+ 1.1 / - 0.8					+ 1.1 / - 0.9				

CIE Pub.117, 957.7 lm Total Lamp Luminous Flux Correct (8log(F/F0) = -0.2)
 Area: 0.111111 m2

C Range: 0 - 360DEG
 C Interval: 22.5DEG
 Test Speed: HIGH
 Temperature:25.3DEG
 Operators:
 Test Date:2021-11-15

Range: 0 - 90DEG
 Interval: 1.0DEG
 Test System:EVERFINE GO-SPEX500_V1 SYSTEM V2.00.421
 Humidity:65.0%
 Test Distance:3.080m [K=1.0000]
 Remarks: PORTER

UTILIZATION FACTORS TABLE

Test:U:119.96V I:0.1159A P:13.669W PF:0.9444 Freq:59.98Hz Lamp Flux:957.66x1 lm		
NAME: LED-2-S15W-5CCT-2RRWH-2RTWH	TYPE:	WEIGHT:
SPEC.:5000K 90	DIM.:	SERIAL No.:
MFR.:	SUR.:	Shielding Angle:

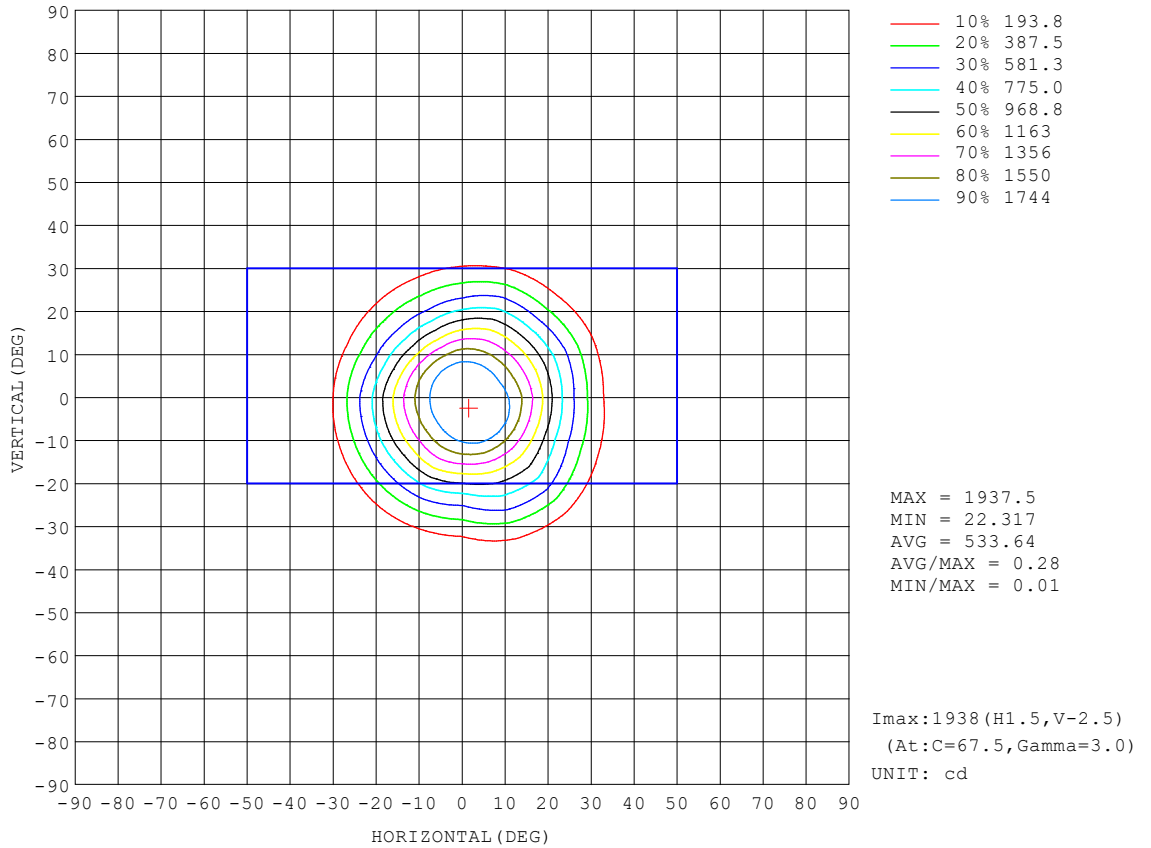
REFLECTANCE										
Ceiling	0.8	0.8	0.8	0.7	0.7	0.7	0.5	0.5	0.5	0
Walls	0.7	0.5	0.3	0.7	0.5	0.3	0.7	0.5	0.3	0
Working plane	0.2	0.2	0.2	0.2	0.2	0.2	0.2	0.2	0.2	0
ROOM INDEX	UTILIZATION FACTORS (PERCENT) $k(RI) \times RCR = 5$									
k = 0.60	86	80	76	86	80	76	85	79	76	72
0.80	94	88	84	93	87	84	92	87	83	80
1.00	98	93	89	97	92	88	96	92	88	84
1.25	102	97	93	101	96	93	99	95	92	88
1.50	105	100	97	104	99	96	102	98	95	91
2.00	108	104	100	107	103	100	104	101	98	93
2.50	110	106	103	108	105	102	105	102	100	94
3.00	111	108	105	110	106	104	106	104	102	95
4.00	113	111	108	111	109	107	108	106	104	97
5.00	115	112	111	113	111	109	109	107	106	98
ROOM INDEX	UF(total)									Direct
According to DIN EN 13032-2 2004			Suspended				SHRNOM = 1.25			

C Range: 0 - 360DEG
 C Interval: 22.5DEG
 Test Speed: HIGH
 Temperature:25.3DEG
 Operators:
 Test Date:2021-11-15

Range: 0 - 90DEG
 Interval: 1.0DEG
 Test System:EVERFINE GO-SPEX500_V1 SYSTEM V2.00.421
 Humidity:65.0%
 Test Distance:3.080m [K=1.0000]
 Remarks: PORTER

ISOCANDELA DIAGRAM

Test:U:119.96V I:0.1159A P:13.669W PF:0.9444 Freq:59.98Hz Lamp Flux:957.66x1 lm		
NAME: LED-2-S15W-5CCT-2RRWH-2RTWH	TYPE:	WEIGHT:
SPEC.:5000K 90	DIM.:	SERIAL No.:
MFR.:	SUR.:	Shielding Angle:

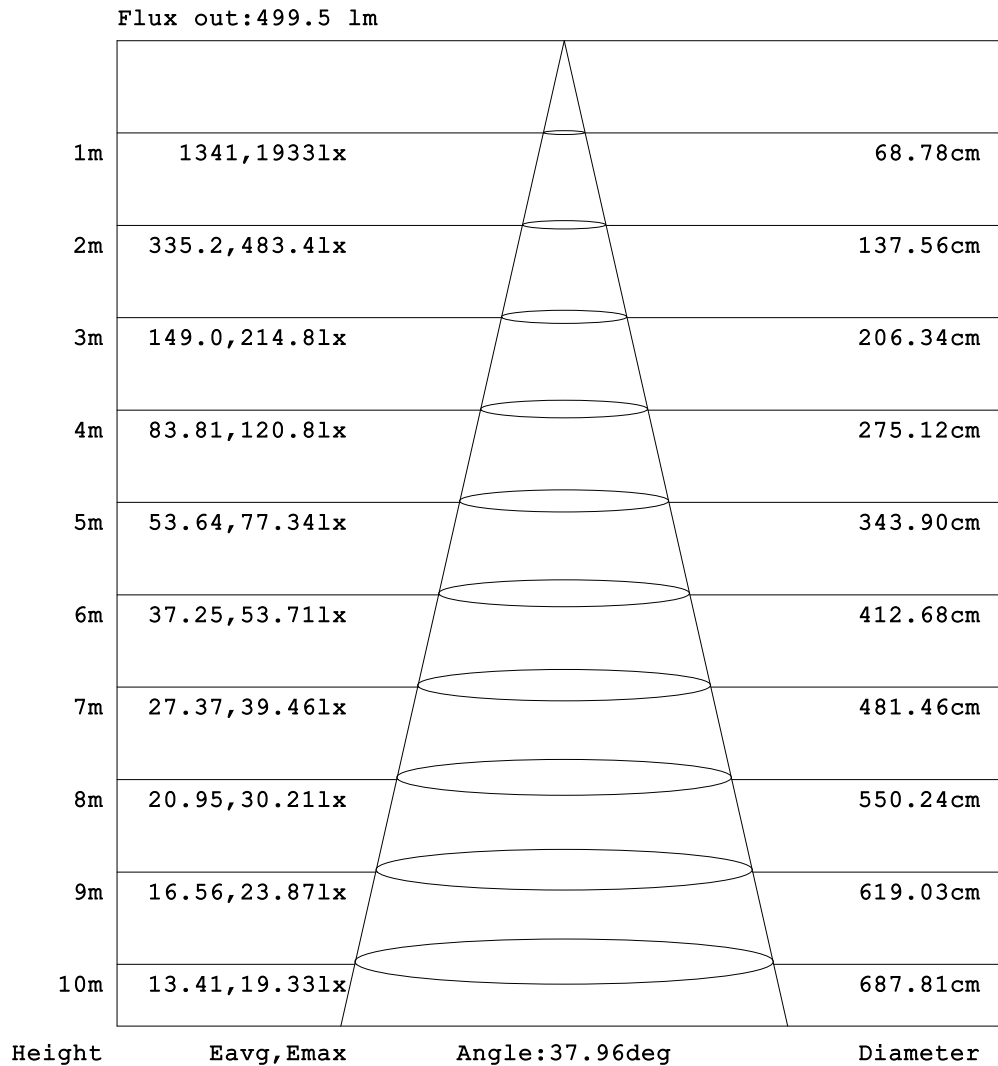


C Range: 0 - 360DEG
 C Interval: 22.5DEG
 Test Speed: HIGH
 Temperature:25.3DEG
 Operators:
 Test Date:2021-11-15

Range: 0 - 90DEG
 Interval: 1.0DEG
 Test System:EVERFINE GO-SPEX500_V1 SYSTEM V2.00.421
 Humidity:65.0%
 Test Distance:3.080m [K=1.0000]
 Remarks: PORTER

AAI Figure

Test:U:119.96V I:0.1159A P:13.669W PF:0.9444 Freq:59.98Hz Lamp Flux:957.66x1 lm		
NAME: LED-2-S15W-5CCT-2RRWH-2RTWH	TYPE:	WEIGHT:
SPEC.:5000K 90	DIM.:	SERIAL No.:
MFR.:	SUR.:	Shielding Angle:



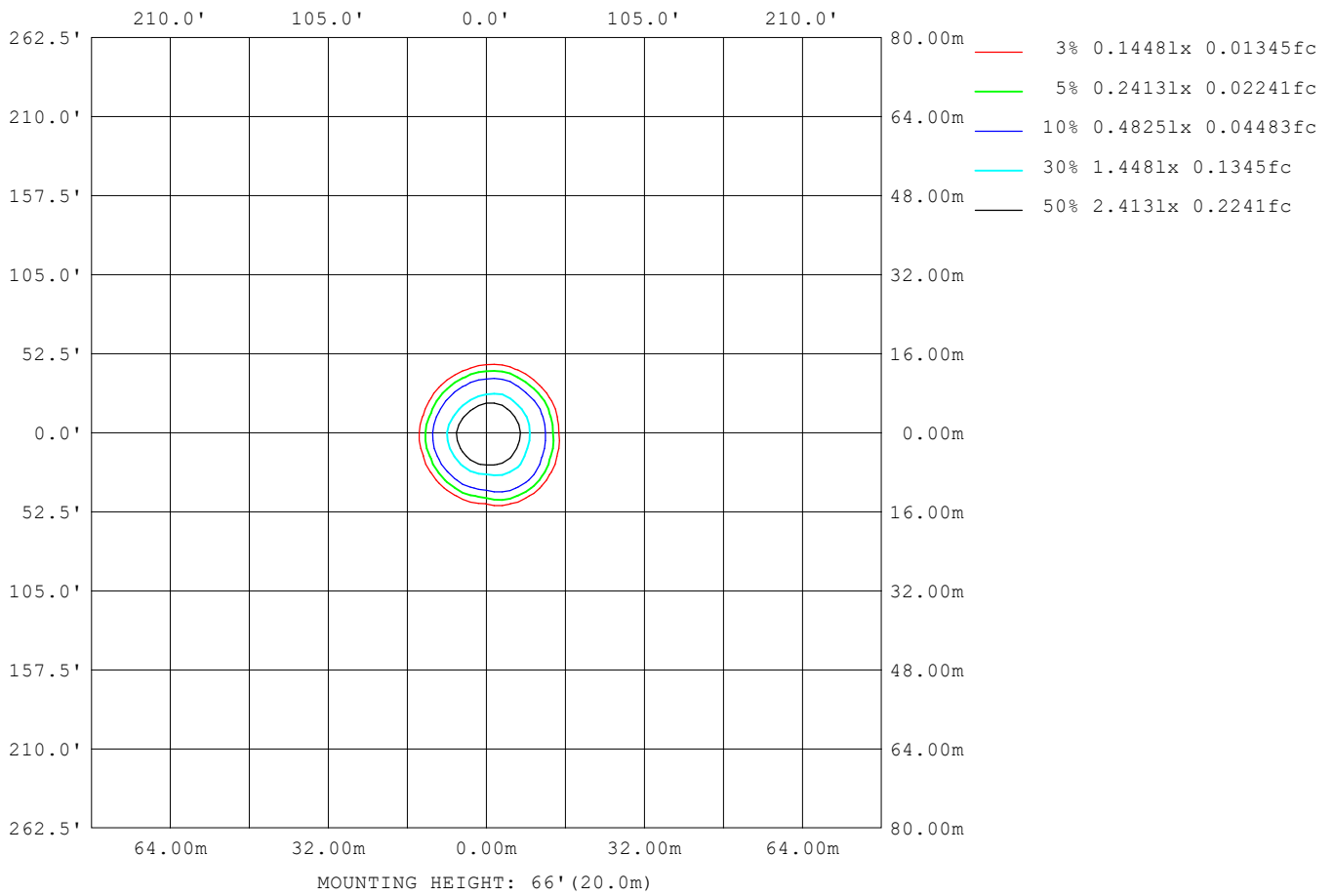
Note:The Curves indicate the illuminated area and the average illumination when the luminaire is at different distance.

C Range: 0 - 360DEG
 C Interval: 22.5DEG
 Test Speed: HIGH
 Temperature:25.3DEG
 Operators:
 Test Date:2021-11-15

Range: 0 - 90DEG
 Interval: 1.0DEG
 Test System:EVERFINE GO-SPEX500_V1 SYSTEM V2.00.421
 Humidity:65.0%
 Test Distance:3.080m [K=1.0000]
 Remarks: PORTER

ISOLUX DIAGRAM

Test:U:119.96V I:0.1159A P:13.669W PF:0.9444 Freq:59.98Hz Lamp Flux:957.66x1 lm		
NAME: LED-2-S15W-5CCT-2RRWH-2RTWH	TYPE:	WEIGHT:
SPEC.:5000K 90	DIM.:	SERIAL No.:
MFR.:	SUR.:	Shielding Angle:



C Range: 0 - 360DEG
 C Interval: 22.5DEG
 Test Speed: HIGH
 Temperature:25.3DEG
 Operators:
 Test Date:2021-11-15

Range: 0 - 90DEG
 Interval: 1.0DEG
 Test System:EVERFINE GO-SPEX500_V1 SYSTEM V2.00.421
 Humidity:65.0%
 Test Distance:3.080m [K=1.0000]
 Remarks: PORTER

LED Avg.L Report

Test:U:119.96V I:0.1159A P:13.669W PF:0.9444 Freq:59.98Hz Lamp Flux:957.66x1 lm		
NAME: LED-2-S15W-5CCT-2RRWH-2RTWH	TYPE:	WEIGHT:
SPEC.:5000K 90	DIM.:	SERIAL No.:
MFR.:	SUR.:	Shielding Angle:

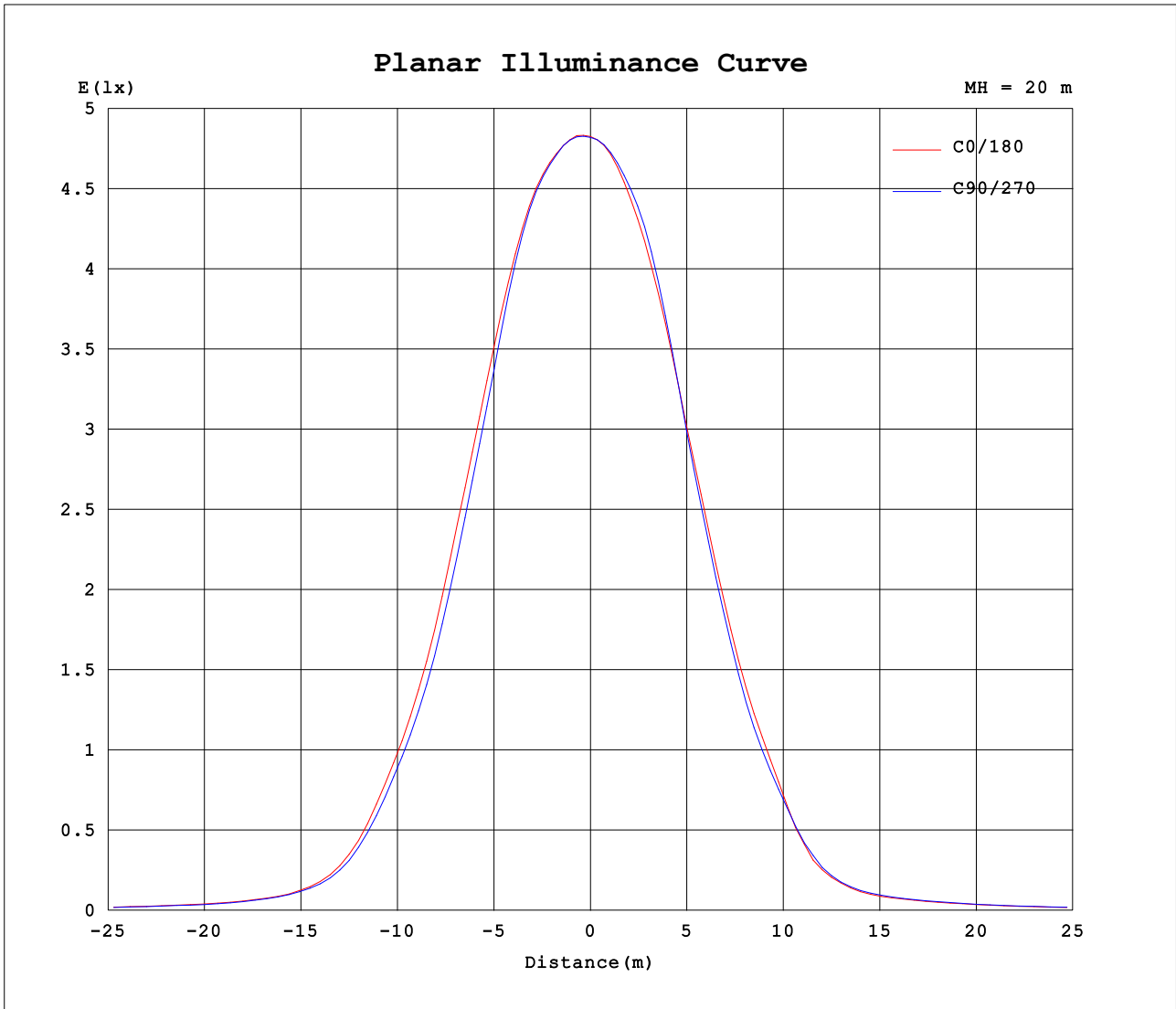
AvgL	cd/m2
L_0~180 (65) av	287
L_0~180 (75) av	230
L_0~180 (85) av	99
L_90~270 (65) av	288
L_90~270 (75) av	233
L_90~270 (85) av	62
L_45 (65) av	287
L_45 (75) av	231
L_45 (85) av	140

Standard: GB/T 29293-2012

C Range: 0 - 360DEG
 C Interval: 22.5DEG
 Test Speed: HIGH
 Temperature:25.3DEG
 Operators:
 Test Date:2021-11-15

Range: 0 - 90DEG
 Interval: 1.0DEG
 Test System:EVERFINE GO-SPEX500_V1 SYSTEM V2.00.421
 Humidity:65.0%
 Test Distance:3.080m [K=1.0000]
 Remarks: PORTER

Planar Illuminance Curve



C Range: 0 - 360DEG
 C Interval: 22.5DEG
 Test Speed: HIGH
 Temperature: 25.3DEG
 Operators:
 Test Date: 2021-11-15

Range: 0 - 90DEG
 Interval: 1.0DEG
 Test System: EVERFINE GO-SPEX500_V1 SYSTEM V2.00.421
 Humidity: 65.0%
 Test Distance: 3.080m [K=1.0000]
 Remarks: PORTER

LUMINOUS DISTRIBUTION INTENSITY DATA

Test:U:119.96V I:0.1159A P:13.669W PF:0.9444 Freq:59.98Hz Lamp Flux:957.66x1 lm		
NAME: LED-2-S15W-5CCT-2RRWH-2RTWH	TYPE:	WEIGHT:
SPEC.:5000K 90	DIM.:	SERIAL No.:
MFR.:	SUR.:	Shielding Angle:

Table--1

UNIT: cd

C (DEG) □ (DEG)	0	22.5	45	67.5	90	112.5	135	157.5	180	202.5	225	247.5	270	292.5	315	337.5			
0	1929	1929	1929	1929	1929	1929	1929	1929	1929	1929	1929	1929	1929	1929	1929	1929			
5	1908	1924	1931	1928	1907	1885	1867	1853	1836	1833	1837	1845	1855	1871	1885	1893			
10	1780	1844	1849	1824	1765	1700	1644	1616	1609	1600	1582	1592	1641	1665	1682	1712			
15	1466	1474	1480	1455	1396	1364	1287	1260	1245	1163	1103	1122	1222	1307	1337	1390			
20	1052	1058	1111	1066	963	959	889	866	843	732	687	702	803	928	952	1011			
25	650	681	805	751	588	594	550	519	505	422	398	409	469	579	588	661			
30	333	388	499	453	300	280	246	218	194	166	167	177	212	255	270	338			
35	132	168	213	191	122	111	102	92.4	86.1	81.2	83.2	83.8	91.2	107	116	135			
40	68.5	74.8	81.2	78.0	65.9	61.7	59.2	58.0	57.3	56.8	57.8	59.0	60.9	63.3	65.4	68.9			
45	46.8	46.7	45.6	44.7	43.3	42.6	42.2	42.5	42.8	43.0	43.7	44.2	45.0	45.5	46.0	46.1			
50	36.0	35.8	34.9	34.0	33.0	32.2	31.7	31.9	32.1	32.4	33.2	33.8	34.7	35.1	35.5	35.5			
55	25.3	25.2	24.5	23.9	23.1	22.6	22.4	22.9	23.2	23.7	24.2	24.6	25.1	25.2	25.2	25.1			
60	18.3	18.0	17.5	17.2	16.8	16.9	17.0	17.5	18.0	18.4	19.0	19.1	19.4	19.2	19.0	18.5			
65	13.5	13.2	12.8	12.6	12.4	12.5	12.6	13.0	13.5	13.9	14.4	14.5	14.7	14.4	14.2	13.7			
70	9.74	9.50	9.22	9.05	8.92	8.93	9.03	9.36	9.72	10.1	10.5	10.6	10.7	10.5	10.2	9.91			
75	6.65	6.48	6.28	6.15	6.05	6.04	6.10	6.32	6.59	6.89	7.20	7.32	7.36	7.20	7.02	6.78			
80	4.10	3.98	3.83	3.60	3.43	3.49	3.64	3.79	3.96	4.17	4.23	4.00	3.91	3.96	4.17	4.18			
85	0.81	1.93	1.37	1.07	0.79	0.98	1.19	1.69	1.10	1.78	1.42	1.10	0.42	1.02	1.43	1.89			
90	0.04	0.04	0.04	0.03	0.04	0.03	0.03	0.03	0.04	0.05	0.04	0.04	0.04	0.04	0.04	0.05			

C Range: 0 - 360DEG
C Interval: 22.5DEG
Test Speed: HIGH
Temperature:25.3DEG
Operators:
Test Date:2021-11-15

□ Range: 0 - 90DEG
□ Interval: 1.0DEG
Test System:EVERFINE GO-SPEX500_V1 SYSTEM V2.00.421
Humidity:65.0%
Test Distance:3.080m [K=1.0000]
Remarks: PORTER