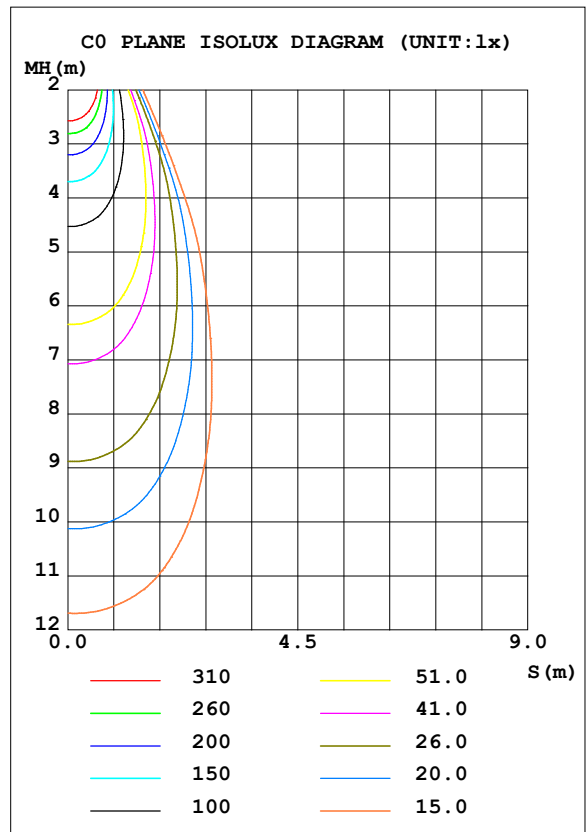
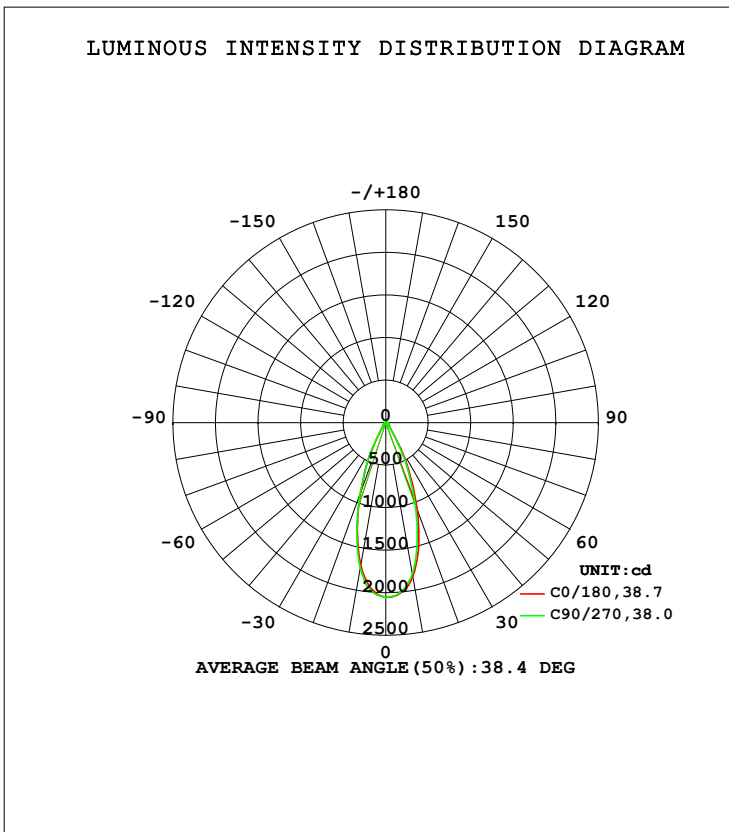


LUMINAIRE PHOTOMETRIC TEST REPORT

Test:U:119.96V I:0.1135A P:13.375W PF:0.9436 Freq:59.98Hz Lamp Flux:998.151x1 lm		
NAME: LED-2-S15W-5CCT-2RRWH-2RTWH	TYPE:	WEIGHT:
SPEC.:4000K 90	DIM.:	SERIAL No.:
MFR.:	SUR.:	Shielding Angle:

DATA OF LAMP		PHOTOMETRIC DATA Eff: 74.63 lm/W			
MODEL		I _{max} (cd)	2051	S/MH (C0/180)	0.59
NOMINAL POWER (W)	15	LOR (%)	100.0	S/MH (C90/270)	0.60
RATED VOLTAGE (V)	120	TOTAL FLUX (lm)	998.15	<input type="checkbox"/> UP, DN (C0-180)	0.0, 52.8
NOMINAL FLUX (lm)	998.151	CIE CLASS	DIRECT	<input type="checkbox"/> UP, DN (C180-360)	0.0, 47.2
LAMPS INSIDE	1	<input type="checkbox"/> up (%)	0.0	CIBSE SHR NOM	0.50
TEST VOLTAGE (V)	120	<input type="checkbox"/> down (%)	100.0	CIBSE SHR MAX	0.65



C Range: 0 - 360DEG
 C Interval: 22.5DEG
 Test Speed: HIGH
 Temperature: 25.3DEG
 Operators:
 Test Date: 2021-11-15

Range: 0 - 90DEG
 Interval: 1.0DEG
 Test System: EVERFINE GO-SPEX500_V1 SYSTEM V2.00.421
 Humidity: 65.0%
 Test Distance: 3.080m [K=1.0000]
 Remarks: PORTER

ZONAL FLUX DIAGRAM

ZONAL FLUX DIAGRAM:

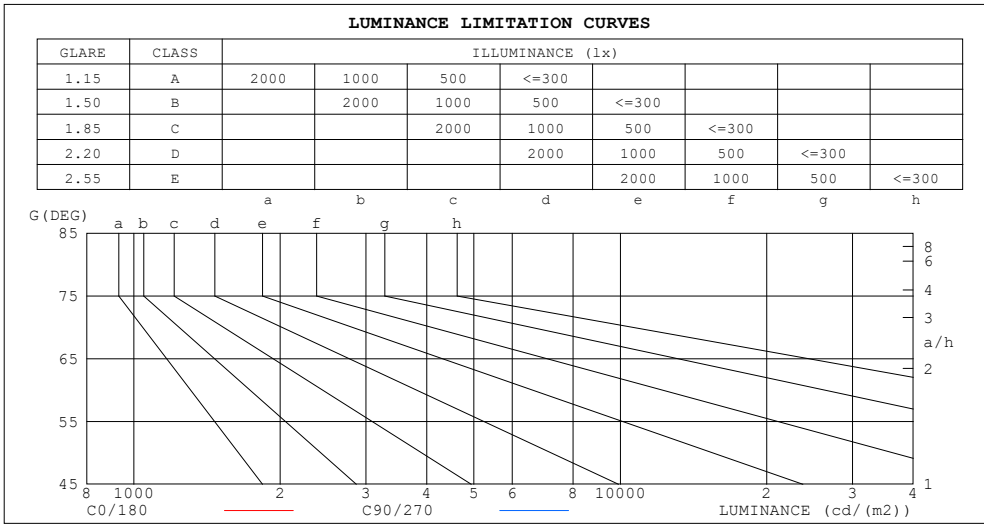
mm	C0	C45	C90	C135	C180	C225	C270	C315	mm	□ zone	□ total	%lum, lamp
10	1837	1873	1805	1728	1700	1699	1733	1777	0- 10	183.0	183.0	18.3,18.3
20	1079	1114	1001	932.5	865.0	810.4	879.6	999.7	10- 20	378.2	561.2	56.2,56.2
30	355.3	446.8	313.3	250.5	199.6	192.3	233.6	288.4	20- 30	270.0	831.2	83.3,83.3
40	71.28	78.87	67.87	60.88	58.93	60.08	63.16	67.61	30- 40	84.92	916.1	91.8,91.8
50	37.02	35.85	34.08	32.71	32.96	34.05	35.59	36.55	40- 50	36.46	952.6	95.4,95.4
60	18.93	18.12	17.44	17.54	18.41	19.28	19.79	19.61	50- 60	22.78	975.4	97.7,97.7
70	10.07	9.596	9.264	9.339	9.937	10.60	10.86	10.55	60- 70	13.87	989.2	99.1,99.1
80	4.250	3.988	3.560	3.766	4.043	4.255	3.966	4.296	70- 80	7.270	996.5	99.8,99.8
90	0.0377	0.0461	0.0360	0.0340	0.0467	0.0464	0.0424	0.0431	80- 90	1.644	998.2	100,100
100									90-100			
110									100-110			
120									110-120			
130									120-130			
140									130-140			
150									140-150			
160									150-160			
170									160-170			
180									170-180			
DEG	LUMINOUS INTENSITY:cd									UNIT:lm		

C Range: 0 - 360DEG
 C Interval: 22.5DEG
 Test Speed: HIGH
 Temperature:25.3DEG
 Operators:
 Test Date:2021-11-15

□ Range: 0 - 90DEG
 □ Interval: 1.0DEG
 Test System:EVERFINE GO-SPEX500_V1 SYSTEM V2.00.421
 Humidity:65.0%
 Test Distance:3.080m [K=1.0000]
 Remarks: PORTER

LUMINANCE LIMITATION CURVES

Test:U:119.96V I:0.1135A P:13.375W PF:0.9436 Freq:59.98Hz Lamp Flux:998.151x1 lm		
NAME: LED-2-S15W-5CCT-2RRWH-2RTWH	TYPE:	WEIGHT:
SPEC.:4000K 90	DIM.:	SERIAL No.:
MFR.:	SUR.:	Shielding Angle:



LUMINANCE cd/(m2)		
G (DEG)	C0/180	C90/270
85	87	84
80	220	185
75	240	219
70	265	244
65	298	274
60	341	314
55	409	374
50	519	477
45	614	569

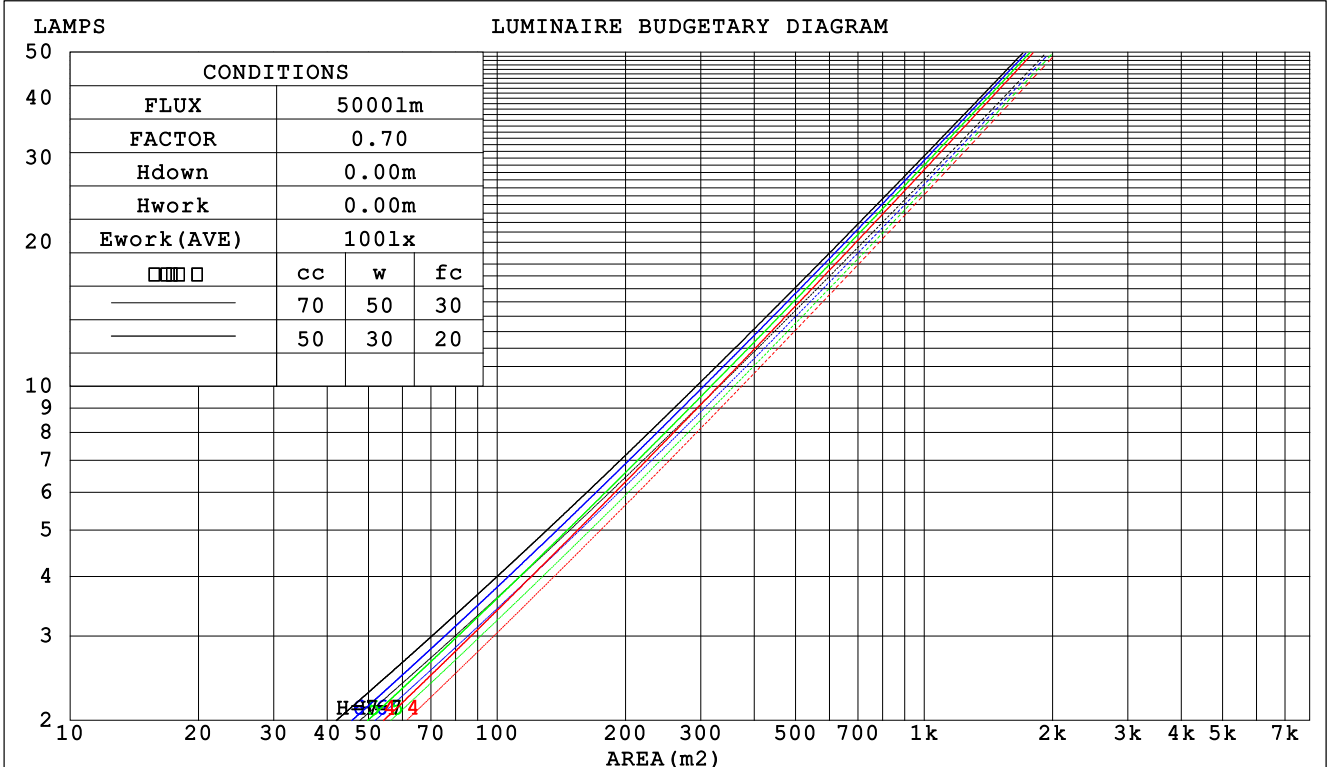
C Range: 0 - 360DEG
 C Interval: 22.5DEG
 Test Speed: HIGH
 Temperature:25.3DEG
 Operators:
 Test Date:2021-11-15

Range: 0 - 90DEG
 Interval: 1.0DEG
 Test System:EVERFINE GO-SPEX500_V1 SYSTEM V2.00.421
 Humidity:65.0%
 Test Distance:3.080m [K=1.0000]
 Remarks: PORTER

CU AND LUMINAIRE BUDGETARY ESTIMATE DIAGRAM

Test:U:119.96V I:0.1135A P:13.375W PF:0.9436 Freq:59.98Hz Lamp Flux:998.151x1 lm		
NAME: LED-2-S15W-5CCT-2RRWH-2RTWH	TYPE:	WEIGHT:
SPEC.:4000K 90	DIM.:	SERIAL No.:
MFR.:	SUR.:	Shielding Angle:

□cc	80%			70%			50%			30%			10%			0
□w	50%	30%	10%	50%	30%	10%	50%	30%	10%	50%	30%	10%	50%	30%	10%	0
□fc	20%			20%			20%			20%			20%			0
RCR	RCR:Room Cavity Ratio						Coefficients of Utilization(CU)									
0.0	1.19	1.19	1.19	1.16	1.16	1.16	1.11	1.11	1.11	1.06	1.06	1.06	1.02	1.02	1.02	1.00
1.0	1.11	1.09	1.07	1.09	1.07	1.05	1.05	1.03	1.02	1.01	.00	.99	.98	.97	.96	.94
2.0	1.04	1.00	.97	1.02	.99	.96	.99	.96	.94	.96	.94	.92	.94	.92	.90	.88
3.0	.98	.93	.90	.97	.92	.89	.94	.90	.88	.92	.89	.86	.89	.87	.85	.83
4.0	.93	.87	.84	.91	.87	.83	.89	.85	.82	.87	.84	.81	.86	.83	.80	.79
5.0	.88	.82	.78	.87	.82	.78	.85	.81	.77	.83	.80	.77	.82	.79	.76	.75
6.0	.83	.78	.74	.83	.77	.74	.81	.77	.73	.80	.76	.73	.78	.75	.72	.71
7.0	.79	.74	.70	.79	.74	.70	.77	.73	.70	.76	.72	.69	.75	.72	.69	.68
8.0	.76	.70	.67	.75	.70	.67	.74	.70	.66	.73	.69	.66	.72	.69	.66	.65
9.0	.72	.67	.64	.72	.67	.64	.71	.67	.63	.70	.66	.63	.69	.66	.63	.62
10.0	.69	.64	.61	.69	.64	.61	.68	.64	.61	.68	.63	.60	.67	.63	.60	.59



C Range: 0 - 360DEG
 C Interval: 22.5DEG
 Test Speed: HIGH
 Temperature:25.3DEG
 Operators:
 Test Date:2021-11-15

□ Range: 0 - 90DEG
 □ Interval: 1.0DEG
 Test System:EVERFINE GO-SPEX500_V1 SYSTEM V2.00.421
 Humidity:65.0%
 Test Distance:3.080m [K=1.0000]
 Remarks: PORTER

WEC AND CCEC

Test:U:119.96V I:0.1135A P:13.375W PF:0.9436 Freq:59.98Hz Lamp Flux:998.151x1 lm		
NAME: LED-2-S15W-5CCT-2RRWH-2RTWH	TYPE:	WEIGHT:
SPEC.:4000K 90	DIM.:	SERIAL No.:
MFR.:	SUR.:	Shielding Angle:

<input type="checkbox"/> cc	80%	70%	50%	30%	10%	0
<input type="checkbox"/> w	50% 30% 10%	50% 30% 10%	50% 30% 10%	50% 30% 10%	50% 30% 10%	0
<input type="checkbox"/> fc	20%	20%	20%	20%	20%	0
RCR	RCR:Room Cavity Ratio		Wall Exitance Coefficients (WEC)			
0.0						
1.0	.170 .097 .031	.163 .093 .030	.151 .086 .028	.139 .080 .026	.129 .075 .024	
2.0	.160 .088 .027	.155 .085 .026	.144 .080 .025	.134 .075 .024	.126 .071 .022	
3.0	.151 .080 .024	.146 .078 .024	.137 .074 .023	.129 .071 .022	.121 .067 .021	
4.0	.142 .074 .022	.138 .072 .021	.130 .069 .021	.123 .066 .020	.117 .063 .019	
5.0	.134 .068 .020	.131 .067 .020	.124 .065 .019	.118 .062 .019	.112 .060 .018	
6.0	.127 .064 .018	.124 .063 .018	.119 .061 .018	.113 .059 .017	.108 .057 .017	
7.0	.121 .060 .017	.118 .059 .017	.113 .057 .017	.109 .056 .016	.104 .054 .016	
8.0	.115 .056 .016	.113 .056 .016	.109 .054 .015	.104 .053 .015	.100 .052 .015	
9.0	.110 .053 .015	.108 .053 .015	.104 .052 .015	.100 .050 .014	.097 .049 .014	
10.0	.106 .051 .014	.104 .050 .014	.100 .049 .014	.097 .048 .014	.094 .047 .013	

<input type="checkbox"/> cc	80%	70%	50%	30%	10%	0
<input type="checkbox"/> w	50% 30% 10%	50% 30% 10%	50% 30% 10%	50% 30% 10%	50% 30% 10%	0
<input type="checkbox"/> fc	20%	20%	20%	20%	20%	0
RCR	RCR:Room Cavity Ratio		Ceiling Cavity Exitance Coefficients (CCEC)			
0.0	.190 .190 .190	.163 .163 .163	.111 .111 .111	.064 .064 .064	.020 .020 .020	
1.0	.171 .157 .145	.146 .135 .125	.100 .093 .087	.057 .054 .050	.018 .017 .016	
2.0	.155 .133 .114	.133 .114 .098	.091 .079 .069	.052 .046 .040	.017 .015 .013	
3.0	.142 .113 .091	.121 .098 .079	.083 .068 .055	.048 .040 .033	.015 .013 .011	
4.0	.130 .099 .074	.112 .085 .065	.077 .059 .045	.045 .035 .027	.014 .011 .009	
5.0	.121 .087 .061	.104 .075 .053	.072 .052 .038	.041 .031 .022	.013 .010 .007	
6.0	.113 .077 .052	.097 .067 .045	.067 .047 .032	.039 .028 .019	.013 .009 .006	
7.0	.106 .069 .044	.091 .060 .038	.063 .042 .027	.037 .025 .016	.012 .008 .005	
8.0	.100 .063 .038	.086 .055 .033	.060 .038 .023	.035 .023 .014	.011 .007 .005	
9.0	.095 .058 .033	.082 .050 .029	.056 .035 .020	.033 .021 .012	.011 .007 .004	
10.0	.090 .053 .029	.077 .046 .025	.054 .032 .018	.031 .019 .011	.010 .006 .004	

C Range: 0 - 360DEG
 C Interval: 22.5DEG
 Test Speed: HIGH
 Temperature:25.3DEG
 Operators:
 Test Date:2021-11-15

Range: 0 - 90DEG
 Interval: 1.0DEG
 Test System:EVERFINE GO-SPEX500_V1 SYSTEM V2.00.421
 Humidity:65.0%
 Test Distance:3.080m [K=1.0000]
 Remarks: PORTER

UGR(Unified Glare Rating) Table

Test:U:119.96V I:0.1135A P:13.375W PF:0.9436 Freq:59.98Hz Lamp Flux:998.151x1 lm										
NAME: LED-2-S15W-5CCT-2RRWH-2RTWH					TYPE:			WEIGHT:		
SPEC.:4000K 90					DIM.:			SERIAL No.:		
MFR.:					SUR.:			Shielding Angle:		
ceiling/cavity	0.7	0.7	0.5	0.5	0.3	0.7	0.7	0.5	0.5	0.3
walls	0.5	0.3	0.5	0.3	0.3	0.5	0.3	0.5	0.3	0.3
working plane	0.2	0.2	0.2	0.2	0.2	0.2	0.2	0.2	0.2	0.2
Room dimensions	Viewed crosswise					Viewed endwise				
x = 2H y = 2H	5.5	6.3	5.7	6.5	6.6	5.3	6.1	5.5	6.3	6.4
3H	5.9	6.7	6.1	6.9	7.1	5.6	6.4	5.9	6.6	6.8
4H	6.1	6.8	6.4	7.0	7.3	5.8	6.6	6.1	6.8	7.0
6H	6.2	6.9	6.5	7.2	7.4	5.9	6.6	6.2	6.9	7.1
8H	6.3	6.9	6.6	7.2	7.5	5.9	6.6	6.2	6.9	7.1
12H	6.2	6.9	6.5	7.2	7.4	5.9	6.6	6.2	6.8	7.1
4H 2H	5.5	6.3	5.8	6.5	6.7	5.3	6.1	5.6	6.3	6.5
3H	6.1	6.8	6.4	7.0	7.3	5.9	6.5	6.2	6.8	7.1
4H	6.4	7.0	6.7	7.3	7.6	6.1	6.7	6.5	7.0	7.3
6H	6.6	7.2	7.0	7.5	7.8	6.4	6.9	6.7	7.2	7.6
8H	6.7	7.2	7.1	7.6	7.9	6.4	6.9	6.8	7.2	7.6
12H	6.7	7.1	7.1	7.5	7.9	6.4	6.8	6.8	7.2	7.6
8H 4H	6.4	6.9	6.8	7.3	7.6	6.2	6.7	6.6	7.0	7.4
6H	6.8	7.2	7.2	7.6	8.0	6.5	6.9	6.9	7.3	7.7
8H	6.9	7.3	7.3	7.7	8.1	6.6	6.9	7.0	7.3	7.8
12H	6.9	7.2	7.4	7.7	8.2	6.6	6.9	7.0	7.3	7.8
12H 4H	6.4	6.9	6.8	7.2	7.6	6.2	6.6	6.6	7.0	7.4
6H	6.8	7.1	7.2	7.5	8.0	6.5	6.9	6.9	7.3	7.7
8H	6.9	7.2	7.4	7.7	8.1	6.6	6.9	7.0	7.3	7.8
Variations with the observer position at spacings:										
S = 1.0H	+ 0.7 / - 0.9					+ 0.8 / - 1.0				
1.5H	+ 1.3 / - 0.6					+ 1.3 / - 0.7				
2.0H	+ 1.1 / - 0.8					+ 1.1 / - 0.9				

CIE Pub.117, 998.2 lm Total Lamp Luminous Flux Correct (8log(F/F0) = -0.0)
 Area: 0.111111 m2

C Range: 0 - 360DEG
 C Interval: 22.5DEG
 Test Speed: HIGH
 Temperature:25.3DEG
 Operators:
 Test Date:2021-11-15

Range: 0 - 90DEG
 Interval: 1.0DEG
 Test System:EVERFINE GO-SPEX500_V1 SYSTEM V2.00.421
 Humidity:65.0%
 Test Distance:3.080m [K=1.0000]
 Remarks: PORTER

UTILIZATION FACTORS TABLE

Test:U:119.96V I:0.1135A P:13.375W PF:0.9436 Freq:59.98Hz Lamp Flux:998.151x1 lm		
NAME: LED-2-S15W-5CCT-2RRWH-2RTWH	TYPE:	WEIGHT:
SPEC.:4000K 90	DIM.:	SERIAL No.:
MFR.:	SUR.:	Shielding Angle:

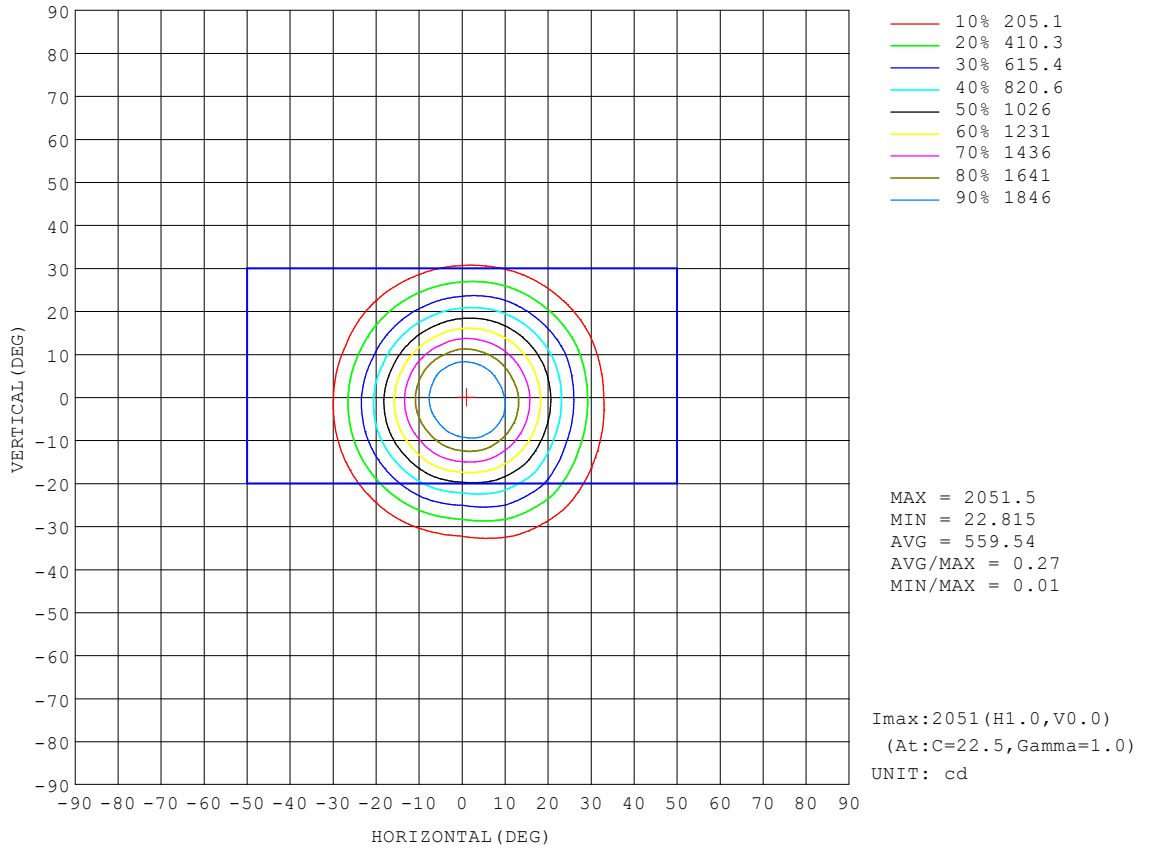
REFLECTANCE										
Ceiling	0.8	0.8	0.8	0.7	0.7	0.7	0.5	0.5	0.5	0
Walls	0.7	0.5	0.3	0.7	0.5	0.3	0.7	0.5	0.3	0
Working plane	0.2	0.2	0.2	0.2	0.2	0.2	0.2	0.2	0.2	0
ROOM INDEX	UTILIZATION FACTORS (PERCENT) $k(RI) \times RCR = 5$									
k = 0.60	86	80	76	86	80	76	85	79	76	72
0.80	94	88	84	93	88	84	92	87	83	80
1.00	98	93	89	98	92	89	96	92	88	84
1.25	102	97	93	101	96	93	99	95	92	88
1.50	105	100	97	104	100	96	102	98	95	91
2.00	108	104	100	107	103	100	104	101	98	93
2.50	110	106	103	108	105	102	105	102	100	94
3.00	111	108	105	110	106	104	106	104	102	95
4.00	114	111	108	111	109	107	108	106	104	97
5.00	115	112	111	113	111	109	109	107	106	98
ROOM INDEX	UF(total)									Direct
According to DIN EN 13032-2 2004			Suspended				SHRNOM = 1.25			

C Range: 0 - 360DEG
 C Interval: 22.5DEG
 Test Speed: HIGH
 Temperature:25.3DEG
 Operators:
 Test Date:2021-11-15

Range: 0 - 90DEG
 Interval: 1.0DEG
 Test System:EVERFINE GO-SPEX500_V1 SYSTEM V2.00.421
 Humidity:65.0%
 Test Distance:3.080m [K=1.0000]
 Remarks: PORTER

ISOCANDELA DIAGRAM

Test:U:119.96V I:0.1135A P:13.375W PF:0.9436 Freq:59.98Hz Lamp Flux:998.151x1 lm		
NAME: LED-2-S15W-5CCT-2RRWH-2RTWH	TYPE:	WEIGHT:
SPEC.:4000K 90	DIM.:	SERIAL No.:
MFR.:	SUR.:	Shielding Angle:

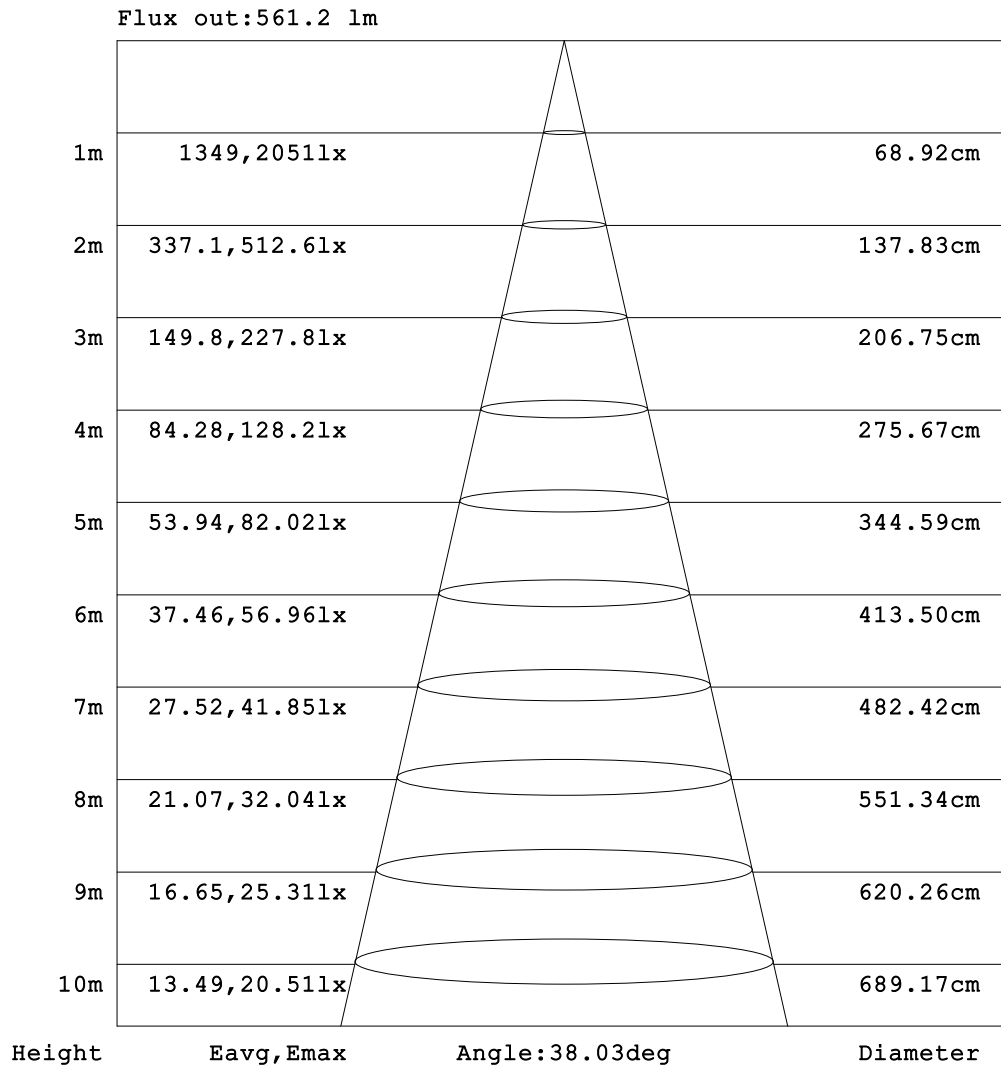


C Range: 0 - 360DEG
 C Interval: 22.5DEG
 Test Speed: HIGH
 Temperature:25.3DEG
 Operators:
 Test Date:2021-11-15

Range: 0 - 90DEG
 Interval: 1.0DEG
 Test System:EVERFINE GO-SPEX500_V1 SYSTEM V2.00.421
 Humidity:65.0%
 Test Distance:3.080m [K=1.0000]
 Remarks: PORTER

AAI Figure

Test:U:119.96V I:0.1135A P:13.375W PF:0.9436 Freq:59.98Hz Lamp Flux:998.151x1 lm		
NAME: LED-2-S15W-5CCT-2RRWH-2RTWH	TYPE:	WEIGHT:
SPEC.:4000K 90	DIM.:	SERIAL No.:
MFR.:	SUR.:	Shielding Angle:



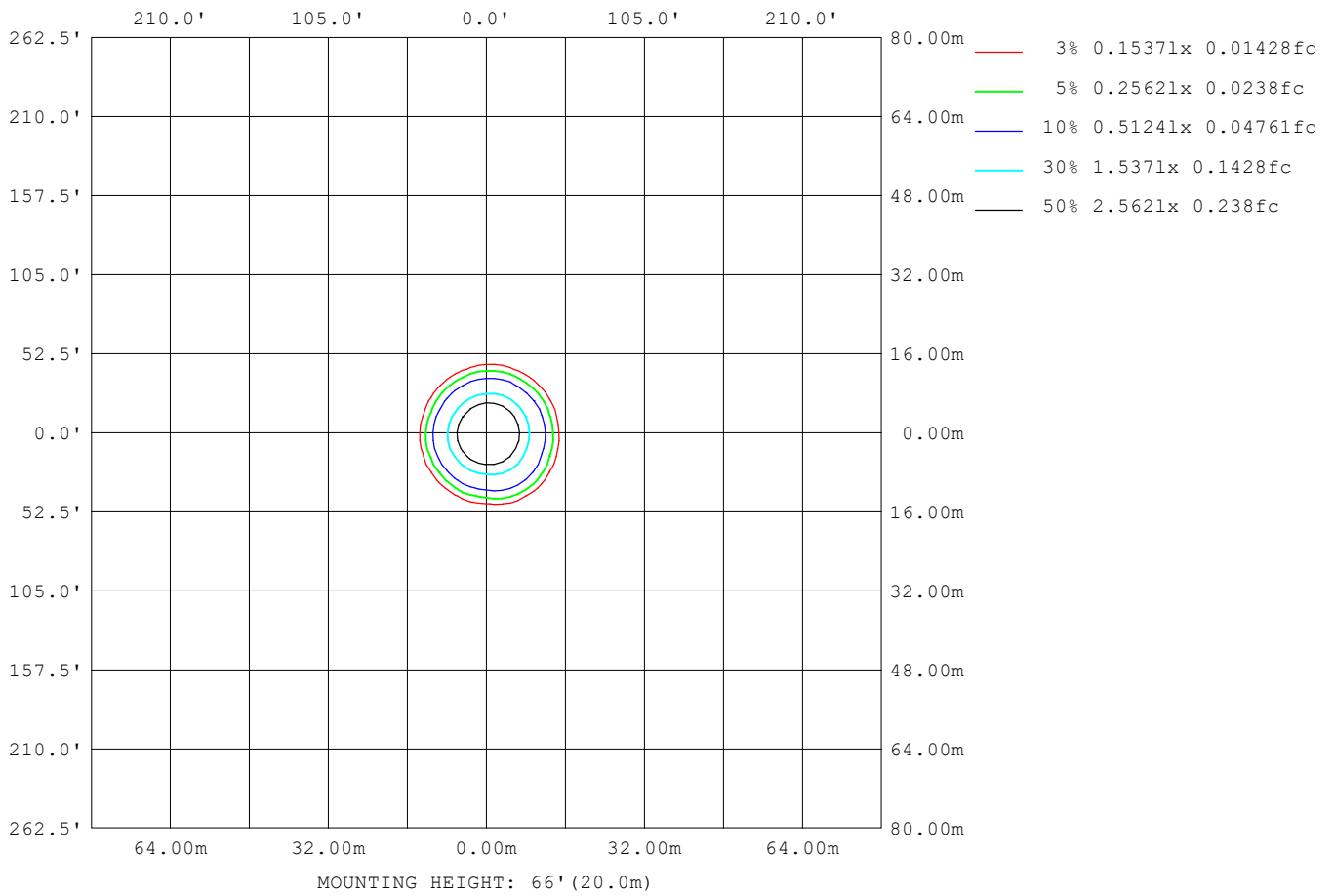
Note:The Curves indicate the illuminated area and the average illumination when the luminaire is at different distance.

C Range: 0 - 360DEG
 C Interval: 22.5DEG
 Test Speed: HIGH
 Temperature:25.3DEG
 Operators:
 Test Date:2021-11-15

Range: 0 - 90DEG
 Interval: 1.0DEG
 Test System:EVERFINE GO-SPEX500_V1 SYSTEM V2.00.421
 Humidity:65.0%
 Test Distance:3.080m [K=1.0000]
 Remarks: PORTER

ISOLUX DIAGRAM

Test:U:119.96V I:0.1135A P:13.375W PF:0.9436 Freq:59.98Hz Lamp Flux:998.151x1 lm		
NAME: LED-2-S15W-5CCT-2RRWH-2RTWH	TYPE:	WEIGHT:
SPEC.:4000K 90	DIM.:	SERIAL No.:
MFR.:	SUR.:	Shielding Angle:



C Range: 0 - 360DEG
 C Interval: 22.5DEG
 Test Speed: HIGH
 Temperature:25.3DEG
 Operators:
 Test Date:2021-11-15

Range: 0 - 90DEG
 Interval: 1.0DEG
 Test System:EVERFINE GO-SPEX500_V1 SYSTEM V2.00.421
 Humidity:65.0%
 Test Distance:3.080m [K=1.0000]
 Remarks: PORTER

LED Avg.L Report

Test:U:119.96V I:0.1135A P:13.375W PF:0.9436 Freq:59.98Hz Lamp Flux:998.151x1 lm		
NAME: LED-2-S15W-5CCT-2RRWH-2RTWH	TYPE:	WEIGHT:
SPEC.:4000K 90	DIM.:	SERIAL No.:
MFR.:	SUR.:	Shielding Angle:

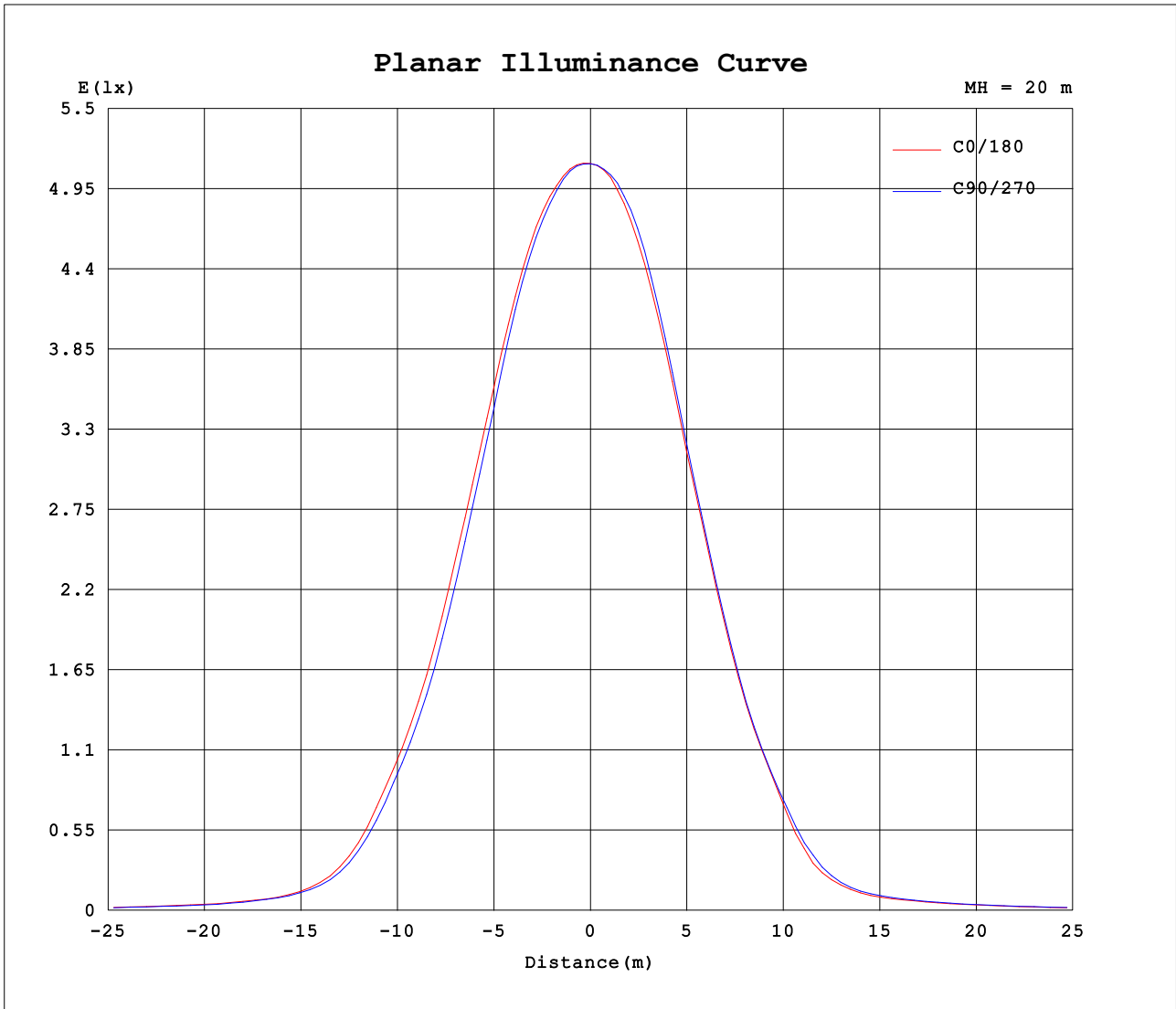
AvgL	cd/m2
L_0~180 (65) av	296
L_0~180 (75) av	237
L_0~180 (85) av	103
L_90~270 (65) av	296
L_90~270 (75) av	239
L_90~270 (85) av	64
L_45 (65) av	295
L_45 (75) av	237
L_45 (85) av	144

Standard: GB/T 29293-2012

C Range: 0 - 360DEG
 C Interval: 22.5DEG
 Test Speed: HIGH
 Temperature:25.3DEG
 Operators:
 Test Date:2021-11-15

Range: 0 - 90DEG
 Interval: 1.0DEG
 Test System:EVERFINE GO-SPEX500_V1 SYSTEM V2.00.421
 Humidity:65.0%
 Test Distance:3.080m [K=1.0000]
 Remarks: PORTER

Planar Illuminance Curve



C Range: 0 - 360DEG
 C Interval: 22.5DEG
 Test Speed: HIGH
 Temperature: 25.3DEG
 Operators:
 Test Date: 2021-11-15

Range: 0 - 90DEG
 Interval: 1.0DEG
 Test System: EVERFINE GO-SPEX500_V1 SYSTEM V2.00.421
 Humidity: 65.0%
 Test Distance: 3.080m [K=1.0000]
 Remarks: PORTER

LUMINOUS DISTRIBUTION INTENSITY DATA

Test:U:119.96V I:0.1135A P:13.375W PF:0.9436 Freq:59.98Hz Lamp Flux:998.151x1 lm		
NAME: LED-2-S15W-5CCT-2RRWH-2RTWH	TYPE:	WEIGHT:
SPEC.:4000K 90	DIM.:	SERIAL No.:
MFR.:	SUR.:	Shielding Angle:

Table--1

UNIT: cd

C (DEG) \ □ (DEG)	0	22.5	45	67.5	90	112.5	135	157.5	180	202.5	225	247.5	270	292.5	315	337.5			
0	2048	2048	2048	2048	2048	2048	2048	2048	2048	2048	2048	2048	2048	2048	2048	2048			
5	2010	2021	2019	2015	1997	1984	1970	1971	1961	1957	1971	1973	1982	1987	2006	2002			
10	1837	1875	1873	1854	1805	1767	1728	1715	1700	1691	1699	1702	1733	1749	1777	1799			
15	1497	1513	1509	1490	1432	1401	1349	1325	1296	1261	1254	1266	1316	1357	1408	1450			
20	1079	1093	1114	1081	1001	982	932	905	865	812	810	829	880	946	1000	1049			
25	681	698	764	727	620	609	570	543	511	465	462	481	517	579	620	676			
30	355	383	447	414	313	287	250	229	200	182	192	205	234	260	288	341			
35	141	163	190	174	126	115	105	95.7	88.6	85.4	90.2	92.5	97.1	109	121	136			
40	71.3	75.3	78.9	76.6	67.9	63.6	60.9	59.8	58.9	58.7	60.1	61.4	63.2	65.0	67.6	70.4			
45	48.2	48.1	47.0	46.0	44.7	43.9	43.6	43.8	43.9	44.2	44.9	45.4	46.2	46.7	47.3	47.6			
50	37.0	36.8	35.8	35.0	34.1	33.3	32.7	32.9	33.0	33.2	34.0	34.7	35.6	36.1	36.6	36.6			
55	26.0	25.9	25.2	24.6	23.8	23.3	23.2	23.6	23.8	24.2	24.8	25.2	25.7	25.8	26.0	25.9			
60	18.9	18.7	18.1	17.8	17.4	17.5	17.5	18.0	18.4	18.8	19.3	19.5	19.8	19.6	19.6	19.1			
65	14.0	13.7	13.3	13.1	12.9	12.9	13.0	13.4	13.8	14.1	14.6	14.7	14.9	14.7	14.6	14.2			
70	10.1	9.87	9.60	9.42	9.26	9.26	9.34	9.64	9.94	10.2	10.6	10.7	10.9	10.7	10.5	10.2			
75	6.89	6.73	6.53	6.41	6.28	6.26	6.29	6.51	6.73	6.98	7.25	7.39	7.47	7.37	7.23	7.01			
80	4.25	4.14	3.99	3.75	3.56	3.61	3.77	3.90	4.04	4.21	4.25	4.04	3.97	4.04	4.30	4.32			
85	0.84	2.00	1.42	1.11	0.81	1.01	1.23	1.74	1.14	1.79	1.43	1.11	0.43	1.05	1.48	1.96			
90	0.04	0.04	0.05	0.04	0.04	0.03	0.03	0.04	0.05	0.05	0.05	0.04	0.04	0.04	0.04	0.05			

C Range: 0 - 360DEG
 C Interval: 22.5DEG
 Test Speed: HIGH
 Temperature:25.3DEG
 Operators:
 Test Date:2021-11-15

□ Range: 0 - 90DEG
 □ Interval: 1.0DEG
 Test System:EVERFINE GO-SPEX500_V1 SYSTEM V2.00.421
 Humidity:65.0%
 Test Distance:3.080m [K=1.0000]
 Remarks: PORTER