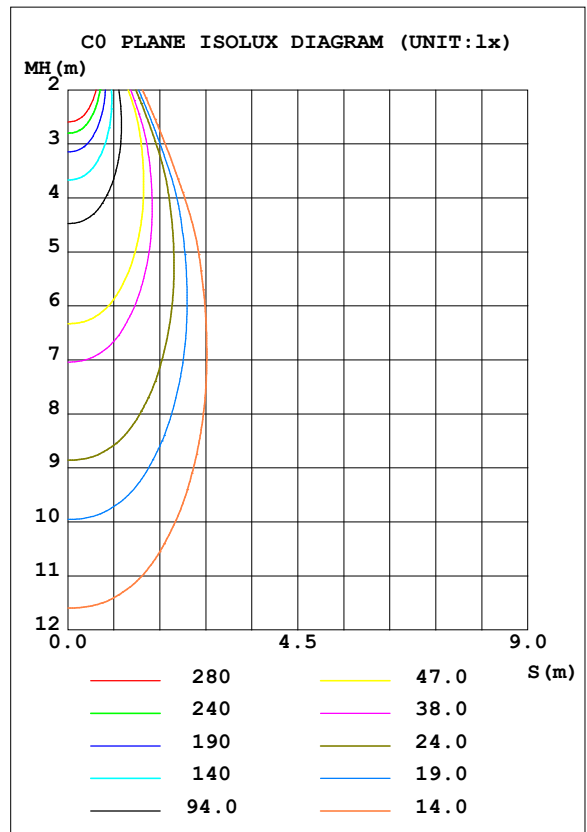
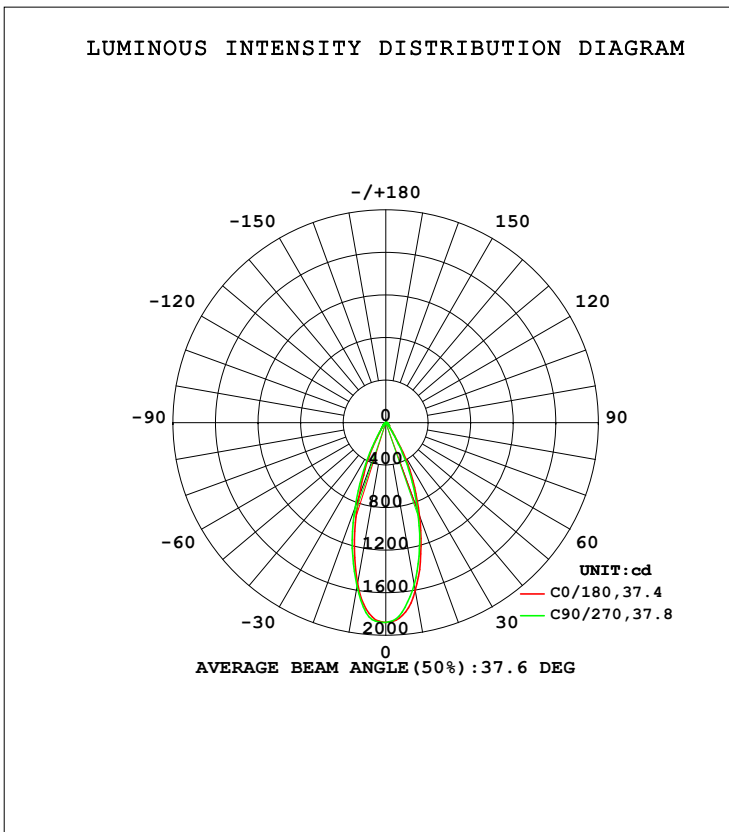


LUMINAIRE PHOTOMETRIC TEST REPORT

Test:U:119.97V I:0.1151A P:13.573W PF:0.9440 Freq:59.98Hz Lamp Flux:881.014x1 lm		
NAME: LED-2-S15W-5CCT-2RRWH-2RTWH	TYPE:	WEIGHT:
SPEC.:3000K 90	DIM.:	SERIAL No.:
MFR.:	SUR.:	Shielding Angle:

DATA OF LAMP		PHOTOMETRIC DATA Eff: 64.91 lm/W			
MODEL		I _{max} (cd)	1878	S/MH (C0/180)	0.58
NOMINAL POWER (W)	15	LOR (%)	100.0	S/MH (C90/270)	0.61
RATED VOLTAGE (V)	120	TOTAL FLUX (lm)	881.01	<input type="checkbox"/> UP, DN (C0-180)	0.0, 51.1
NOMINAL FLUX (lm)	881.014	CIE CLASS	DIRECT	<input type="checkbox"/> UP, DN (C180-360)	0.0, 48.9
LAMPS INSIDE	1	<input type="checkbox"/> up (%)	0.0	CIBSE SHR NOM	0.50
TEST VOLTAGE (V)	120	<input type="checkbox"/> down (%)	100.0	CIBSE SHR MAX	0.65



C Range: 0 - 360DEG
 C Interval: 22.5DEG
 Test Speed: HIGH
 Temperature: 25.3DEG
 Operators:
 Test Date: 2021-11-15

Range: 0 - 90DEG
 Interval: 1.0DEG
 Test System: EVERFINE GO-SPEX500_V1 SYSTEM V2.00.421
 Humidity: 65.0%
 Test Distance: 3.080m [K=1.0000]
 Remarks: PORTER

ZONAL FLUX DIAGRAM

ZONAL FLUX DIAGRAM:

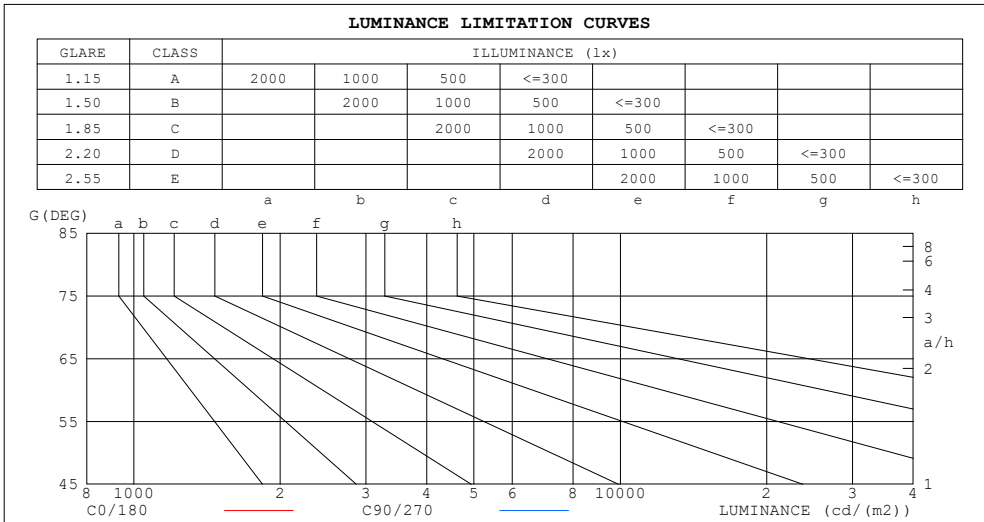
mm	C0	C45	C90	C135	C180	C225	C270	C315	mm	□ zone	□ total	%lum, lamp
10	1603	1575	1545	1553	1536	1571	1561	1603	0- 10	164.8	164.8	18.7,18.7
20	928.7	914.6	877.5	827.2	743.7	859.0	839.0	892.5	10- 20	337.3	502.1	57,57
30	326.4	281.2	276.8	212.6	172.9	198.1	226.0	266.7	20- 30	237.1	739.2	83.9,83.9
40	63.04	60.86	58.65	52.62	50.93	52.85	55.43	58.94	30- 40	71.12	810.3	92,92
50	32.02	30.88	29.46	28.38	28.46	29.29	30.65	31.58	40- 50	31.40	841.7	95.5,95.5
60	16.51	15.85	15.25	15.27	15.81	16.35	16.84	16.93	50- 60	19.65	861.4	97.8,97.8
70	8.814	8.440	8.133	8.134	8.479	8.852	9.164	9.127	60- 70	11.97	873.3	99.1,99.1
80	3.721	3.509	3.127	3.282	3.442	3.526	3.347	3.723	70- 80	6.261	879.6	99.8,99.8
90	0.0323	0.0404	0.0301	0.0284	0.0423	0.0414	0.0401	0.0378	80- 90	1.419	881.0	100,100
100									90-100			
110									100-110			
120									110-120			
130									120-130			
140									130-140			
150									140-150			
160									150-160			
170									160-170			
180									170-180			
DEG	LUMINOUS INTENSITY:cd									UNIT:lm		

C Range: 0 - 360DEG
 C Interval: 22.5DEG
 Test Speed: HIGH
 Temperature:25.3DEG
 Operators:
 Test Date:2021-11-15

□ Range: 0 - 90DEG
 □ Interval: 1.0DEG
 Test System:EVERFINE GO-SPEX500_V1 SYSTEM V2.00.421
 Humidity:65.0%
 Test Distance:3.080m [K=1.0000]
 Remarks: PORTER

LUMINANCE LIMITATION CURVES

Test:U:119.97V I:0.1151A P:13.573W PF:0.9440 Freq:59.98Hz Lamp Flux:881.014x1 lm		
NAME: LED-2-S15W-5CCT-2RRWH-2RTWH	TYPE:	WEIGHT:
SPEC.:3000K 90	DIM.:	SERIAL No.:
MFR.:	SUR.:	Shielding Angle:



LUMINANCE cd/(m2)		
G (DEG)	C0/180	C90/270
85	77	74
80	193	162
75	210	192
70	233	214
65	261	240
60	298	274
55	354	324
50	450	412
45	534	492

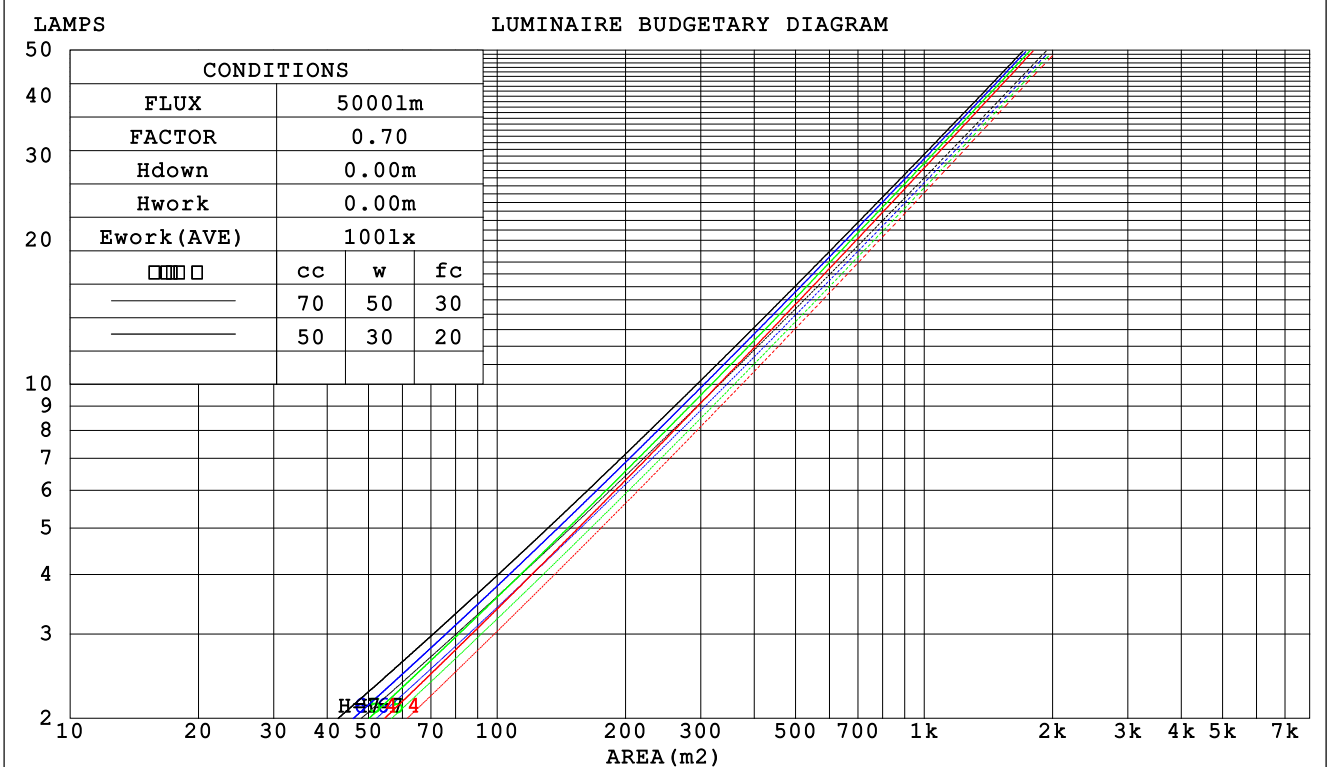
C Range: 0 - 360DEG
 C Interval: 22.5DEG
 Test Speed: HIGH
 Temperature:25.3DEG
 Operators:
 Test Date:2021-11-15

Range: 0 - 90DEG
 Interval: 1.0DEG
 Test System:EVERFINE GO-SPEX500_V1 SYSTEM V2.00.421
 Humidity:65.0%
 Test Distance:3.080m [K=1.0000]
 Remarks: PORTER

CU AND LUMINAIRE BUDGETARY ESTIMATE DIAGRAM

Test:U:119.97V I:0.1151A P:13.573W PF:0.9440 Freq:59.98Hz Lamp Flux:881.014x1 lm		
NAME: LED-2-S15W-5CCT-2RRWH-2RTWH	TYPE:	WEIGHT:
SPEC.:3000K 90	DIM.:	SERIAL No.:
MFR.:	SUR.:	Shielding Angle:

□cc	80%			70%			50%			30%			10%			0
□w	50%	30%	10%	50%	30%	10%	50%	30%	10%	50%	30%	10%	50%	30%	10%	0
□fc	20%			20%			20%			20%			20%			0
RCR	RCR:Room Cavity Ratio						Coefficients of Utilization(CU)									
0.0	1.19	1.19	1.19	1.16	1.16	1.16	1.11	1.11	1.11	1.06	1.06	1.06	1.02	1.02	1.02	1.00
1.0	1.11	1.09	1.07	1.09	1.07	1.05	1.05	1.03	1.02	1.01	1.00	.99	.98	.97	.96	.94
2.0	1.04	1.00	.97	1.03	.99	.96	.99	.97	.94	.96	.94	.92	.94	.92	.90	.89
3.0	.98	.94	.90	.97	.93	.89	.94	.91	.88	.92	.89	.86	.90	.87	.85	.84
4.0	.93	.88	.84	.92	.87	.83	.90	.86	.82	.88	.84	.81	.86	.83	.81	.79
5.0	.88	.83	.79	.87	.82	.78	.85	.81	.78	.84	.80	.77	.82	.79	.76	.75
6.0	.84	.78	.74	.83	.78	.74	.81	.77	.74	.80	.76	.73	.79	.75	.73	.71
7.0	.80	.74	.71	.79	.74	.70	.78	.73	.70	.77	.73	.70	.76	.72	.69	.68
8.0	.76	.71	.67	.76	.70	.67	.74	.70	.67	.74	.69	.66	.73	.69	.66	.65
9.0	.73	.68	.64	.72	.67	.64	.71	.67	.64	.71	.66	.64	.70	.66	.63	.62
10.0	.70	.65	.61	.69	.64	.61	.69	.64	.61	.68	.64	.61	.67	.63	.61	.60



C Range: 0 - 360DEG
 C Interval: 22.5DEG
 Test Speed: HIGH
 Temperature:25.3DEG
 Operators:
 Test Date:2021-11-15

□ Range: 0 - 90DEG
 □ Interval: 1.0DEG
 Test System:EVERFINE GO-SPEX500_V1 SYSTEM V2.00.421
 Humidity:65.0%
 Test Distance:3.080m [K=1.0000]
 Remarks: PORTER

WEC AND CCEC

Test:U:119.97V I:0.1151A P:13.573W PF:0.9440 Freq:59.98Hz Lamp Flux:881.014x1 lm		
NAME: LED-2-S15W-5CCT-2RRWH-2RTWH	TYPE:	WEIGHT:
SPEC.:3000K 90	DIM.:	SERIAL No.:
MFR.:	SUR.:	Shielding Angle:

<input type="checkbox"/> cc	80%	70%	50%	30%	10%	0
<input type="checkbox"/> w	50% 30% 10%	50% 30% 10%	50% 30% 10%	50% 30% 10%	50% 30% 10%	0
<input type="checkbox"/> fc	20%	20%	20%	20%	20%	0
RCR	RCR:Room Cavity Ratio		Wall Exitance Coefficients (WEC)			
0.0						
1.0	.169 .096 .030	.162 .093 .029	.150 .086 .027	.138 .080 .026	.128 .074 .024	
2.0	.159 .087 .027	.154 .085 .026	.143 .080 .025	.133 .075 .023	.125 .070 .022	
3.0	.150 .080 .024	.145 .078 .023	.136 .074 .022	.128 .070 .021	.120 .067 .021	
4.0	.141 .073 .022	.137 .072 .021	.129 .069 .021	.122 .066 .020	.116 .063 .019	
5.0	.133 .068 .020	.130 .067 .019	.123 .064 .019	.117 .062 .018	.111 .060 .018	
6.0	.126 .063 .018	.123 .062 .018	.118 .060 .018	.112 .058 .017	.107 .056 .017	
7.0	.120 .059 .017	.118 .059 .017	.113 .057 .016	.108 .055 .016	.103 .054 .016	
8.0	.115 .056 .016	.112 .055 .016	.108 .054 .015	.104 .052 .015	.100 .051 .015	
9.0	.110 .053 .015	.107 .052 .015	.103 .051 .014	.100 .050 .014	.096 .049 .014	
10.0	.105 .050 .014	.103 .050 .014	.099 .049 .014	.096 .048 .014	.093 .047 .013	

<input type="checkbox"/> cc	80%	70%	50%	30%	10%	0
<input type="checkbox"/> w	50% 30% 10%	50% 30% 10%	50% 30% 10%	50% 30% 10%	50% 30% 10%	0
<input type="checkbox"/> fc	20%	20%	20%	20%	20%	0
RCR	RCR:Room Cavity Ratio		Ceiling Cavity Exitance Coefficients (CCEC)			
0.0	.190 .190 .190	.163 .163 .163	.111 .111 .111	.064 .064 .064	.020 .020 .020	
1.0	.171 .157 .146	.146 .135 .125	.100 .093 .087	.057 .054 .050	.018 .017 .016	
2.0	.155 .133 .114	.132 .114 .099	.091 .079 .069	.052 .046 .040	.017 .015 .013	
3.0	.141 .113 .091	.121 .098 .079	.083 .068 .056	.048 .040 .033	.015 .013 .011	
4.0	.130 .099 .074	.112 .085 .065	.077 .059 .046	.044 .035 .027	.014 .011 .009	
5.0	.121 .087 .062	.104 .075 .054	.071 .052 .038	.041 .031 .022	.013 .010 .007	
6.0	.113 .077 .052	.097 .067 .045	.067 .047 .032	.039 .028 .019	.013 .009 .006	
7.0	.106 .069 .044	.091 .060 .038	.063 .042 .027	.037 .025 .016	.012 .008 .005	
8.0	.100 .063 .038	.086 .055 .033	.059 .038 .023	.035 .023 .014	.011 .007 .005	
9.0	.094 .058 .033	.081 .050 .029	.056 .035 .020	.033 .021 .012	.011 .007 .004	
10.0	.090 .053 .029	.077 .046 .025	.054 .032 .018	.031 .019 .011	.010 .006 .004	

C Range: 0 - 360DEG
 C Interval: 22.5DEG
 Test Speed: HIGH
 Temperature:25.3DEG
 Operators:
 Test Date:2021-11-15

Range: 0 - 90DEG
 Interval: 1.0DEG
 Test System:EVERFINE GO-SPEX500_V1 SYSTEM V2.00.421
 Humidity:65.0%
 Test Distance:3.080m [K=1.0000]
 Remarks: PORTER

UGR(Unified Glare Rating) Table

Test:U:119.97V I:0.1151A P:13.573W PF:0.9440 Freq:59.98Hz Lamp Flux:881.014x1 lm		
NAME: LED-2-S15W-5CCT-2RRWH-2RTWH	TYPE:	WEIGHT:
SPEC.:3000K 90	DIM.:	SERIAL No.:
MFR.:	SUR.:	Shielding Angle:

ceiling/cavity	0.7	0.7	0.5	0.5	0.3	0.7	0.7	0.5	0.5	0.3
walls	0.5	0.3	0.5	0.3	0.3	0.5	0.3	0.5	0.3	0.3
working plane	0.2	0.2	0.2	0.2	0.2	0.2	0.2	0.2	0.2	0.2
Room dimensions	Viewed crosswise					Viewed endwise				
x = 2H y = 2H	5.1	6.0	5.3	6.1	6.3	4.6	5.4	4.8	5.6	5.8
3H	5.6	6.4	5.9	6.6	6.8	5.1	5.9	5.3	6.1	6.3
4H	5.8	6.6	6.1	6.8	7.0	5.3	6.0	5.6	6.3	6.5
6H	6.0	6.7	6.3	6.9	7.2	5.4	6.1	5.7	6.4	6.6
8H	6.0	6.7	6.3	6.9	7.2	5.5	6.1	5.8	6.4	6.6
12H	6.0	6.6	6.3	6.9	7.2	5.4	6.1	5.8	6.4	6.6
4H 2H	5.2	6.0	5.5	6.2	6.4	4.8	5.5	5.0	5.7	5.9
3H	5.9	6.5	6.2	6.8	7.1	5.4	6.1	5.7	6.3	6.6
4H	6.2	6.8	6.5	7.1	7.4	5.7	6.3	6.1	6.6	6.9
6H	6.4	7.0	6.8	7.3	7.6	6.0	6.5	6.3	6.8	7.2
8H	6.5	7.0	6.9	7.3	7.7	6.0	6.5	6.4	6.8	7.2
12H	6.5	6.9	6.9	7.3	7.7	6.0	6.4	6.4	6.8	7.2
8H 4H	6.2	6.7	6.6	7.1	7.4	5.8	6.3	6.2	6.6	7.0
6H	6.6	7.0	7.0	7.4	7.8	6.1	6.5	6.6	6.9	7.3
8H	6.7	7.1	7.2	7.5	7.9	6.2	6.6	6.7	7.0	7.4
12H	6.7	7.1	7.2	7.5	8.0	6.2	6.5	6.7	7.0	7.4
12H 4H	6.2	6.6	6.6	7.0	7.4	5.8	6.2	6.2	6.6	7.0
6H	6.6	6.9	7.0	7.4	7.8	6.1	6.5	6.6	6.9	7.4
8H	6.7	7.0	7.2	7.5	7.9	6.2	6.5	6.7	7.0	7.5
Variations with the observer position at spacings:										
S = 1.0H	+ 0.9 / - 0.9					+ 0.7 / - 0.9				
1.5H	+ 1.6 / - 0.6					+ 1.2 / - 0.6				
2.0H	+ 1.1 / - 0.7					+ 1.1 / - 0.8				

CIE Pub.117, 881.0 lm Total Lamp Luminous Flux Correct (8log(F/F0) = -0.4)
 Area: 0.111111 m2

C Range: 0 - 360DEG
 C Interval: 22.5DEG
 Test Speed: HIGH
 Temperature:25.3DEG
 Operators:
 Test Date:2021-11-15

Range: 0 - 90DEG
 Interval: 1.0DEG
 Test System:EVERFINE GO-SPEX500_V1 SYSTEM V2.00.421
 Humidity:65.0%
 Test Distance:3.080m [K=1.0000]
 Remarks: PORTER

UTILIZATION FACTORS TABLE

Test:U:119.97V I:0.1151A P:13.573W PF:0.9440 Freq:59.98Hz Lamp Flux:881.014x1 lm		
NAME: LED-2-S15W-5CCT-2RRWH-2RTWH	TYPE:	WEIGHT:
SPEC.:3000K 90	DIM.:	SERIAL No.:
MFR.:	SUR.:	Shielding Angle:

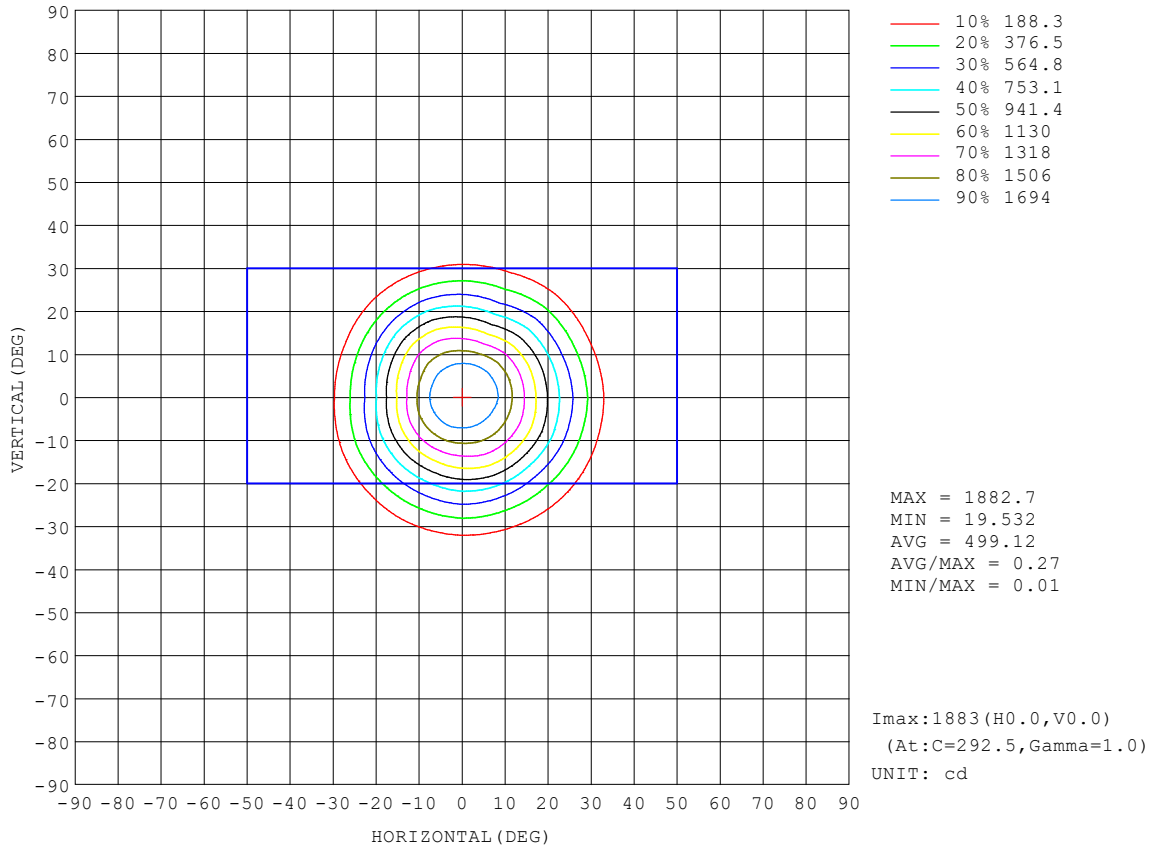
REFLECTANCE										
Ceiling	0.8	0.8	0.8	0.7	0.7	0.7	0.5	0.5	0.5	0
Walls	0.7	0.5	0.3	0.7	0.5	0.3	0.7	0.5	0.3	0
Working plane	0.2	0.2	0.2	0.2	0.2	0.2	0.2	0.2	0.2	0
ROOM INDEX	UTILIZATION FACTORS (PERCENT) $k(RI) \times RCR = 5$									
k = 0.60	87	80	76	86	80	76	85	80	76	72
0.80	94	88	84	93	88	84	92	87	84	80
1.00	98	93	89	98	92	89	96	92	88	84
1.25	102	97	94	101	97	93	99	95	92	88
1.50	105	100	97	104	100	96	102	98	95	91
2.00	108	104	100	107	103	100	104	101	98	93
2.50	110	106	103	108	105	102	105	102	100	94
3.00	111	108	105	110	106	104	106	104	102	95
4.00	114	111	108	111	109	107	108	106	104	97
5.00	115	112	111	113	111	109	109	107	106	98
ROOM INDEX	UF(total)									Direct
According to DIN EN 13032-2 2004			Suspended				SHRNOM = 1.25			

C Range: 0 - 360DEG
 C Interval: 22.5DEG
 Test Speed: HIGH
 Temperature:25.3DEG
 Operators:
 Test Date:2021-11-15

Range: 0 - 90DEG
 Interval: 1.0DEG
 Test System:EVERFINE GO-SPEX500_V1 SYSTEM V2.00.421
 Humidity:65.0%
 Test Distance:3.080m [K=1.0000]
 Remarks: PORTER

ISOCANDELA DIAGRAM

Test:U:119.97V I:0.1151A P:13.573W PF:0.9440 Freq:59.98Hz Lamp Flux:881.014x1 lm		
NAME: LED-2-S15W-5CCT-2RRWH-2RTWH	TYPE:	WEIGHT:
SPEC.:3000K 90	DIM.:	SERIAL No.:
MFR.:	SUR.:	Shielding Angle:

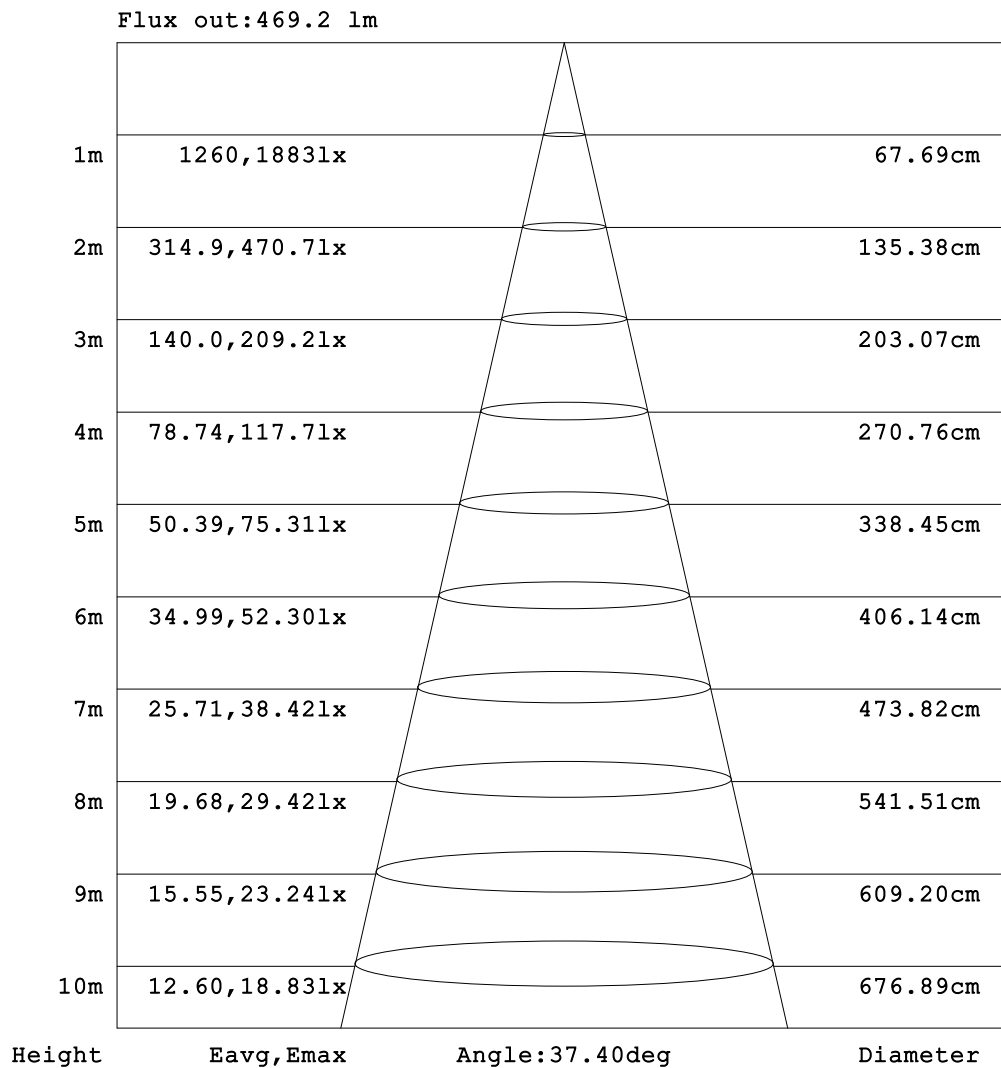


C Range: 0 - 360DEG
 C Interval: 22.5DEG
 Test Speed: HIGH
 Temperature:25.3DEG
 Operators:
 Test Date:2021-11-15

Range: 0 - 90DEG
 Interval: 1.0DEG
 Test System:EVERFINE GO-SPEX500_V1 SYSTEM V2.00.421
 Humidity:65.0%
 Test Distance:3.080m [K=1.0000]
 Remarks: PORTER

AAI Figure

Test:U:119.97V I:0.1151A P:13.573W PF:0.9440 Freq:59.98Hz Lamp Flux:881.014x1 lm		
NAME: LED-2-S15W-5CCT-2RRWH-2RTWH	TYPE:	WEIGHT:
SPEC.:3000K 90	DIM.:	SERIAL No.:
MFR.:	SUR.:	Shielding Angle:



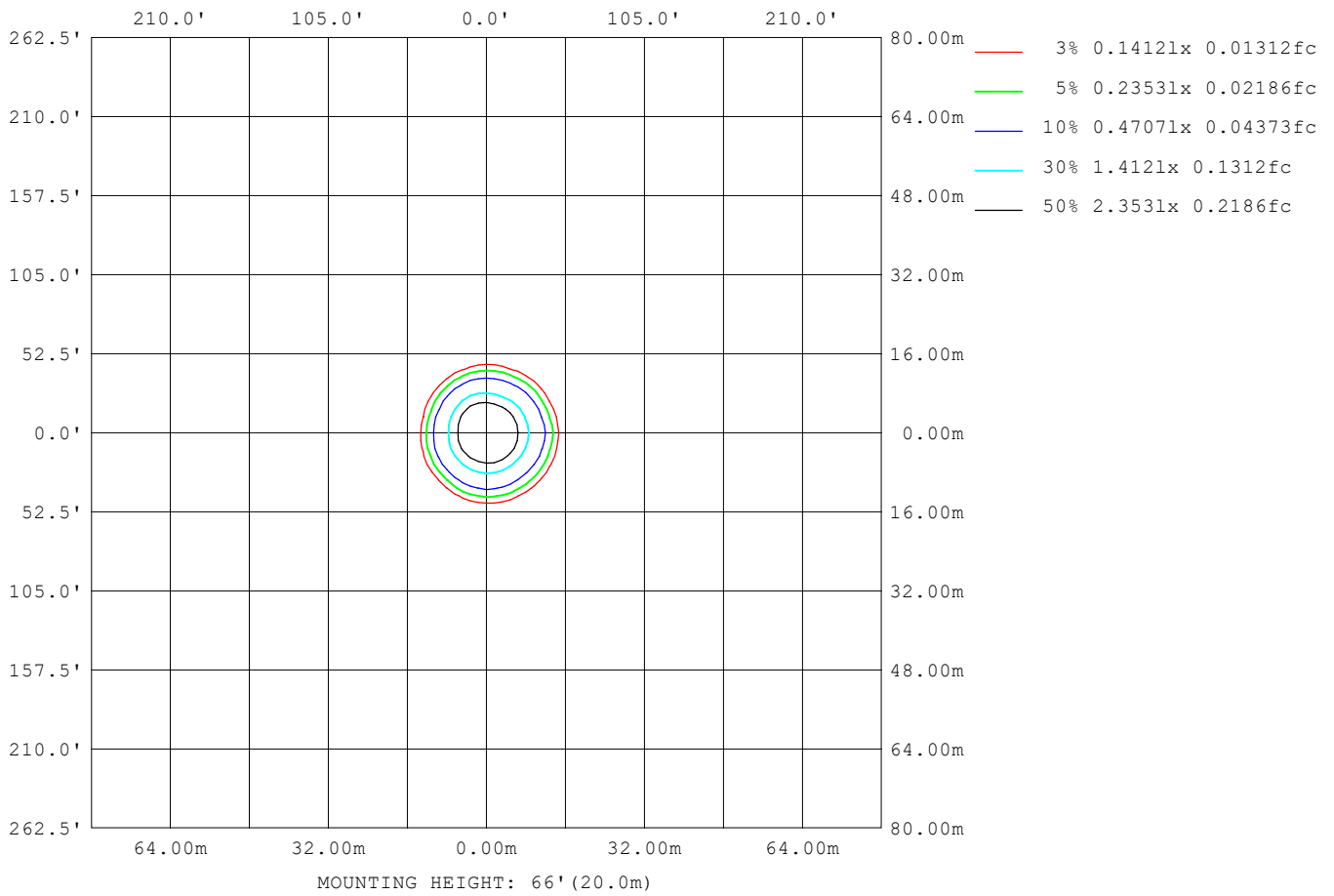
Note:The Curves indicate the illuminated area and the average illumination when the luminaire is at different distance.

C Range: 0 - 360DEG
 C Interval: 22.5DEG
 Test Speed: HIGH
 Temperature:25.3DEG
 Operators:
 Test Date:2021-11-15

Range: 0 - 90DEG
 Interval: 1.0DEG
 Test System:EVERFINE GO-SPEX500_V1 SYSTEM V2.00.421
 Humidity:65.0%
 Test Distance:3.080m [K=1.0000]
 Remarks: PORTER

ISOLUX DIAGRAM

Test:U:119.97V I:0.1151A P:13.573W PF:0.9440 Freq:59.98Hz Lamp Flux:881.014x1 lm		
NAME: LED-2-S15W-5CCT-2RRWH-2RTWH	TYPE:	WEIGHT:
SPEC.:3000K 90	DIM.:	SERIAL No.:
MFR.:	SUR.:	Shielding Angle:



C Range: 0 - 360DEG
 C Interval: 22.5DEG
 Test Speed: HIGH
 Temperature:25.3DEG
 Operators:
 Test Date:2021-11-15

Range: 0 - 90DEG
 Interval: 1.0DEG
 Test System:EVERFINE GO-SPEX500_V1 SYSTEM V2.00.421
 Humidity:65.0%
 Test Distance:3.080m [K=1.0000]
 Remarks: PORTER

LED Avg.L Report

Test:U:119.97V I:0.1151A P:13.573W PF:0.9440 Freq:59.98Hz Lamp Flux:881.014x1 lm		
NAME: LED-2-S15W-5CCT-2RRWH-2RTWH	TYPE:	WEIGHT:
SPEC.:3000K 90	DIM.:	SERIAL No.:
MFR.:	SUR.:	Shielding Angle:

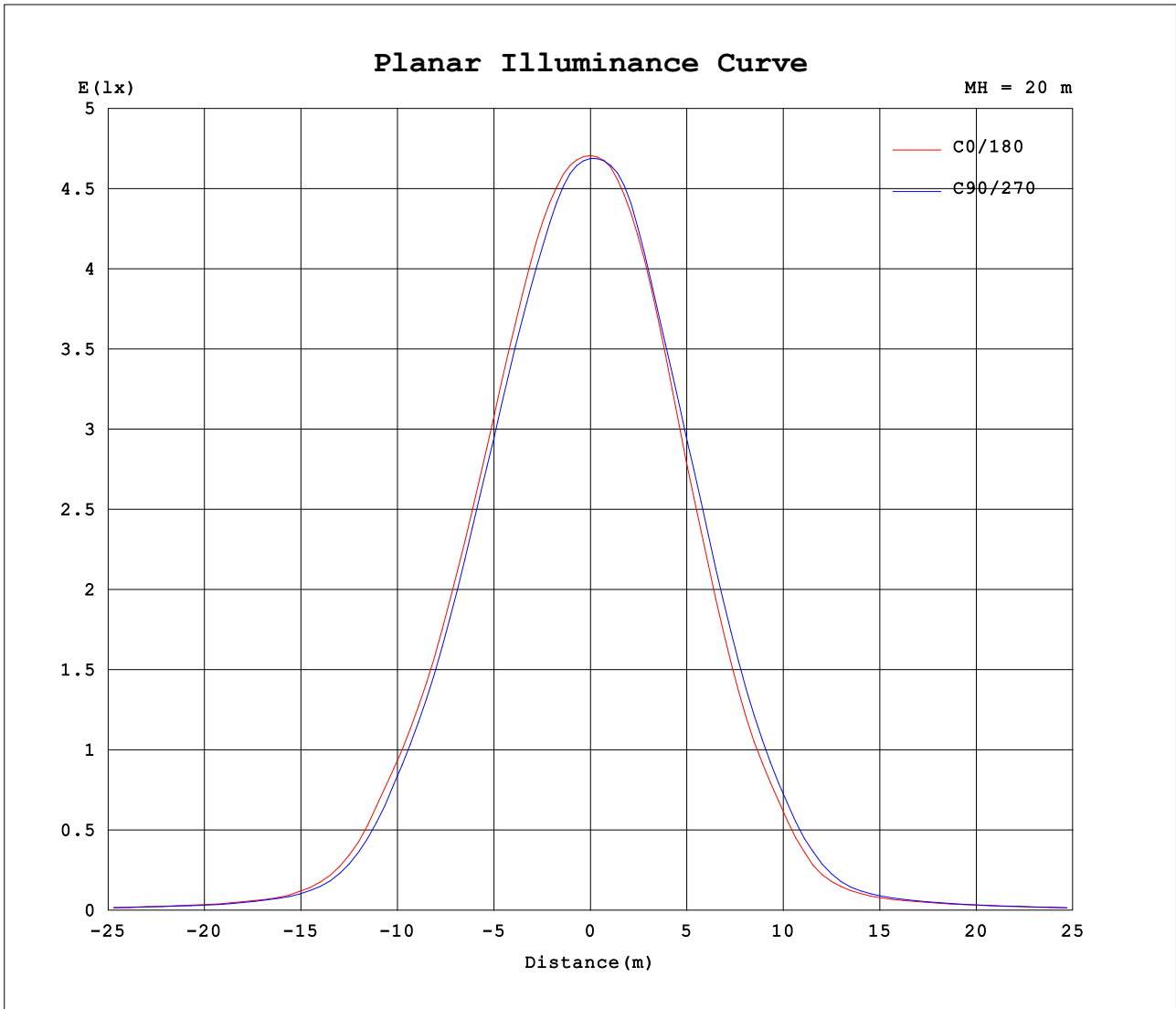
AvgL	cd/m2
L_0~180 (65) av	256
L_0~180 (75) av	205
L_0~180 (85) av	90
L_90~270 (65) av	255
L_90~270 (75) av	205
L_90~270 (85) av	57
L_45 (65) av	255
L_45 (75) av	204
L_45 (85) av	124

Standard: GB/T 29293-2012

C Range: 0 - 360DEG
 C Interval: 22.5DEG
 Test Speed: HIGH
 Temperature:25.3DEG
 Operators:
 Test Date:2021-11-15

Range: 0 - 90DEG
 Interval: 1.0DEG
 Test System:EVERFINE GO-SPEX500_V1 SYSTEM V2.00.421
 Humidity:65.0%
 Test Distance:3.080m [K=1.0000]
 Remarks: PORTER

Planar Illuminance Curve



C Range: 0 - 360DEG
 C Interval: 22.5DEG
 Test Speed: HIGH
 Temperature: 25.3DEG
 Operators:
 Test Date: 2021-11-15

Range: 0 - 90DEG
 Interval: 1.0DEG
 Test System: EVERFINE GO-SPEX500_V1 SYSTEM V2.00.421
 Humidity: 65.0%
 Test Distance: 3.080m [K=1.0000]
 Remarks: PORTER

LUMINOUS DISTRIBUTION INTENSITY DATA

Test:U:119.97V I:0.1151A P:13.573W PF:0.9440 Freq:59.98Hz Lamp Flux:881.014x1 lm		
NAME: LED-2-S15W-5CCT-2RRWH-2RTWH	TYPE:	WEIGHT:
SPEC.:3000K 90	DIM.:	SERIAL No.:
MFR.:	SUR.:	Shielding Angle:

Table--1

UNIT: cd

C (DEG) □ (DEG)	0	22.5	45	67.5	90	112.5	135	157.5	180	202.5	225	247.5	270	292.5	315	337.5			
0	1877	1877	1877	1877	1877	1877	1877	1877	1877	1877	1877	1877	1877	1877	1877	1877			
5	1819	1813	1800	1792	1787	1787	1786	1796	1800	1810	1823	1826	1831	1826	1823	1820			
10	1603	1582	1575	1558	1545	1550	1553	1557	1536	1538	1571	1570	1561	1570	1603	1615			
15	1278	1297	1284	1269	1230	1204	1208	1189	1141	1189	1261	1263	1222	1193	1261	1283			
20	929	948	915	903	878	836	827	802	744	789	859	877	839	803	892	917			
25	607	597	556	552	558	522	499	481	428	449	482	506	497	475	557	575			
30	326	305	281	275	277	247	213	201	173	176	198	213	226	221	267	283			
35	129	126	120	116	109	99.9	91.0	83.7	76.9	76.9	85.3	88.6	89.0	94.0	107	112			
40	63.0	62.6	60.9	60.1	58.6	55.3	52.6	51.8	50.9	51.2	52.8	54.0	55.4	55.9	58.9	60.0			
45	41.8	41.6	40.6	39.8	38.7	38.1	37.8	37.9	37.9	38.0	38.6	39.0	39.8	40.3	40.8	41.2			
50	32.0	31.7	30.9	30.2	29.5	28.9	28.4	28.5	28.5	28.6	29.3	29.8	30.6	31.1	31.6	31.6			
55	22.5	22.3	21.7	21.3	20.6	20.3	20.1	20.3	20.5	20.7	21.2	21.5	22.1	22.2	22.5	22.4			
60	16.5	16.3	15.9	15.6	15.2	15.3	15.3	15.6	15.8	16.0	16.3	16.5	16.8	16.8	16.9	16.6			
65	12.2	12.1	11.7	11.5	11.3	11.3	11.3	11.6	11.8	11.9	12.2	12.4	12.6	12.6	12.6	12.3			
70	8.81	8.66	8.44	8.28	8.13	8.10	8.13	8.33	8.48	8.63	8.85	8.98	9.16	9.17	9.13	8.92			
75	6.03	5.90	5.74	5.64	5.52	5.47	5.49	5.62	5.73	5.86	6.03	6.14	6.29	6.30	6.26	6.10			
80	3.72	3.63	3.51	3.30	3.13	3.16	3.28	3.37	3.44	3.53	3.53	3.36	3.35	3.45	3.72	3.76			
85	0.75	1.76	1.25	0.98	0.72	0.89	1.07	1.51	1.00	1.49	1.18	0.94	0.39	0.93	1.28	1.70			
90	0.03	0.03	0.04	0.03	0.03	0.03	0.03	0.03	0.04	0.04	0.04	0.04	0.04	0.04	0.04	0.04			

C Range: 0 - 360DEG
 C Interval: 22.5DEG
 Test Speed: HIGH
 Temperature:25.3DEG
 Operators:
 Test Date:2021-11-15

□ Range: 0 - 90DEG
 □ Interval: 1.0DEG
 Test System:EVERFINE GO-SPEX500_V1 SYSTEM V2.00.421
 Humidity:65.0%
 Test Distance:3.080m [K=1.0000]
 Remarks: PORTER