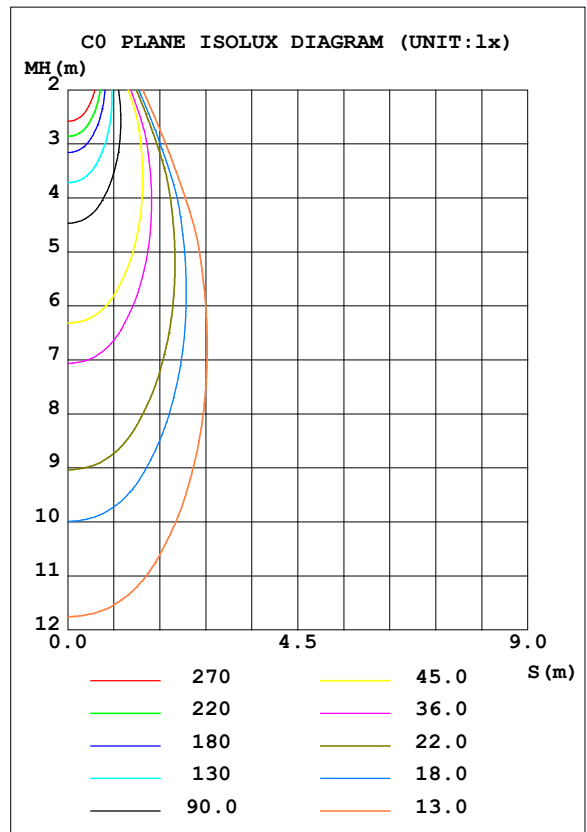
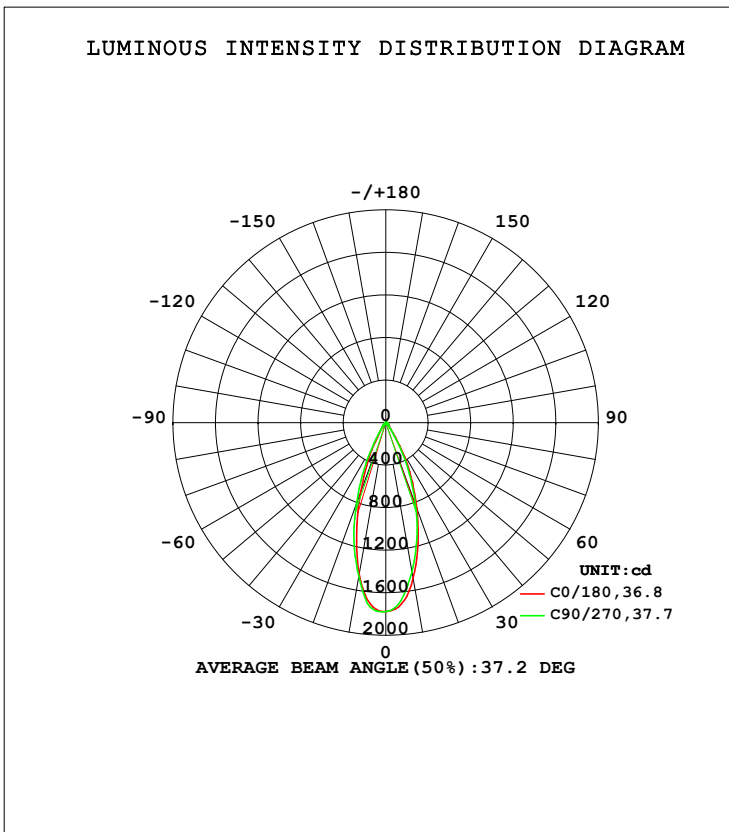


**LUMINAIRE PHOTOMETRIC TEST REPORT**

Test:U:119.97V I:0.1173A P:13.829W PF:0.9441 Freq:59.98Hz Lamp Flux:822.967x1 lm		
NAME: LED-2-S15W-5CCT-2RRWH-2RTWH	TYPE:	WEIGHT:
SPEC.:2700K 90	DIM.:	SERIAL No.:
MFR.:	SUR.:	Shielding Angle:

DATA OF LAMP		PHOTOMETRIC DATA Eff: 59.51 lm/W			
MODEL		I <sub>max</sub> (cd)	1779	S/MH (C0/180)	0.57
NOMINAL POWER (W)	15	LOR (%)	100.0	S/MH (C90/270)	0.61
RATED VOLTAGE (V)	120	TOTAL FLUX (lm)	822.97	<input type="checkbox"/> UP, DN (C0-180)	0.0, 50.5
NOMINAL FLUX (lm)	822.967	CIE CLASS	DIRECT	<input type="checkbox"/> UP, DN (C180-360)	0.0, 49.5
LAMPS INSIDE	1	<input type="checkbox"/> up (%)	0.0	CIBSE SHR NOM	0.50
TEST VOLTAGE (V)	120	<input type="checkbox"/> down (%)	100.0	CIBSE SHR MAX	0.65



C Range: 0 - 360DEG  
 C Interval: 22.5DEG  
 Test Speed: HIGH  
 Temperature: 25.3DEG  
 Operators:  
 Test Date: 2021-11-15

Range: 0 - 90DEG  
 Interval: 1.0DEG  
 Test System: EVERFINE GO-SPEX500\_V1 SYSTEM V2.00.421  
 Humidity: 65.0%  
 Test Distance: 3.080m [K=1.0000]  
 Remarks: PORTER

**ZONAL FLUX DIAGRAM**

ZONAL FLUX DIAGRAM:

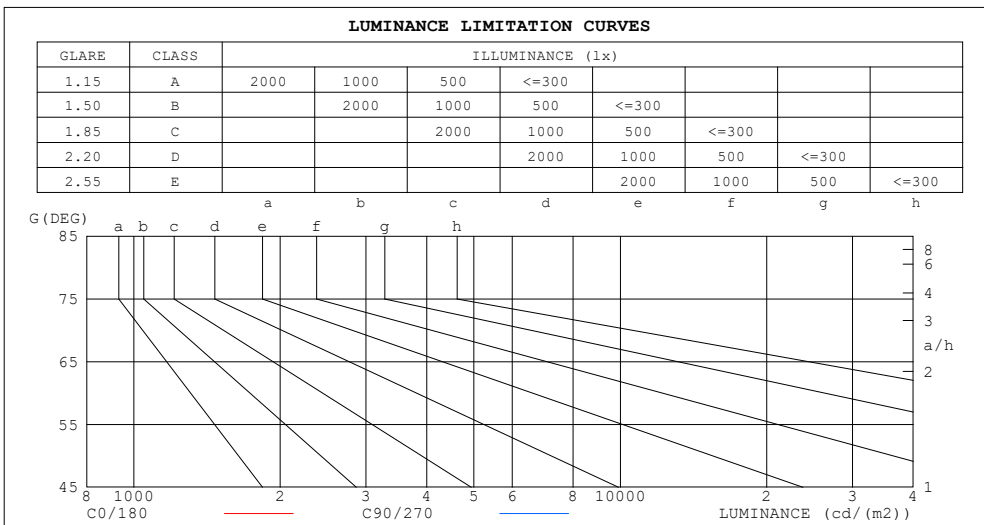
mm	C0	C45	C90	C135	C180	C225	C270	C315	mm	□ zone	□ total	%lum, lamp
10	1486	1439	1424	1459	1447	1491	1466	1508	0- 10	154.8	154.8	18.8,18.8
20	855.4	829.9	817.4	775.6	688.0	851.9	804.2	836.0	10- 20	316.0	470.9	57.2,57.2
30	309.1	222.2	259.4	196.6	161.0	195.2	218.4	254.1	20- 30	221.2	692.1	84.1,84.1
40	59.01	53.91	54.56	48.91	47.31	49.37	51.83	55.10	30- 40	65.27	757.3	92,92
50	29.66	28.65	27.37	26.43	26.41	27.09	28.39	29.34	40- 50	29.14	786.5	95.6,95.6
60	15.34	14.80	14.26	14.22	14.65	15.03	15.52	15.73	50- 60	18.25	804.7	97.8,97.8
70	8.211	7.899	7.598	7.582	7.841	8.077	8.418	8.482	60- 70	11.11	815.8	99.1,99.1
80	3.461	3.288	2.931	3.057	3.181	3.206	3.068	3.456	70- 80	5.805	821.6	99.8,99.8
90	0.0304	0.0395	0.0318	0.0262	0.0383	0.0346	0.0358	0.0336	80- 90	1.318	823.0	100,100
100									90-100			
110									100-110			
120									110-120			
130									120-130			
140									130-140			
150									140-150			
160									150-160			
170									160-170			
180									170-180			
DEG	LUMINOUS INTENSITY:cd									UNIT:lm		

C Range: 0 - 360DEG  
 C Interval: 22.5DEG  
 Test Speed: HIGH  
 Temperature:25.3DEG  
 Operators:  
 Test Date:2021-11-15

□ Range: 0 - 90DEG  
 □ Interval: 1.0DEG  
 Test System:EVERFINE GO-SPEX500\_V1 SYSTEM V2.00.421  
 Humidity:65.0%  
 Test Distance:3.080m [K=1.0000]  
 Remarks: PORTER

**LUMINANCE LIMITATION CURVES**

Test:U:119.97V I:0.1173A P:13.829W PF:0.9441 Freq:59.98Hz Lamp Flux:822.967x1 lm		
NAME: LED-2-S15W-5CCT-2RRWH-2RTWH	TYPE:	WEIGHT:
SPEC.:2700K 90	DIM.:	SERIAL No.:
MFR.:	SUR.:	Shielding Angle:



LUMINANCE cd/(m2)		
G (DEG)	C0/180	C90/270
85	72	71
80	181	152
75	198	179
70	219	200
65	245	225
60	279	256
55	331	301
50	420	383
45	500	458

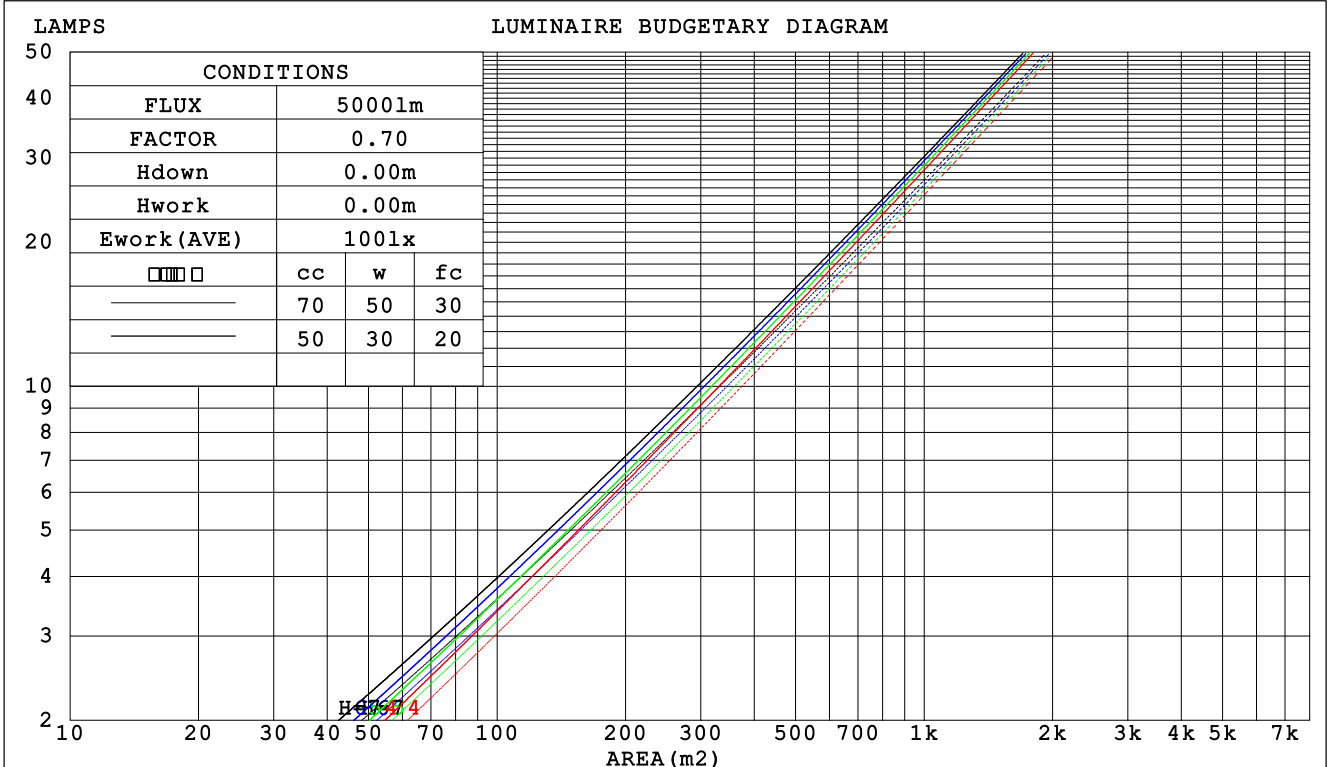
C Range: 0 - 360DEG  
 C Interval: 22.5DEG  
 Test Speed: HIGH  
 Temperature:25.3DEG  
 Operators:  
 Test Date:2021-11-15

Range: 0 - 90DEG  
 Interval: 1.0DEG  
 Test System:EVERFINE GO-SPEX500\_V1 SYSTEM V2.00.421  
 Humidity:65.0%  
 Test Distance:3.080m [K=1.0000]  
 Remarks: PORTER

CU AND LUMINAIRE BUDGETARY ESTIMATE DIAGRAM

Test:U:119.97V I:0.1173A P:13.829W PF:0.9441 Freq:59.98Hz Lamp Flux:822.967x1 lm		
NAME: LED-2-S15W-5CCT-2RRWH-2RTWH	TYPE:	WEIGHT:
SPEC.:2700K 90	DIM.:	SERIAL No.:
MFR.:	SUR.:	Shielding Angle:

□cc	80%			70%			50%			30%			10%			0
□w	50%	30%	10%	50%	30%	10%	50%	30%	10%	50%	30%	10%	50%	30%	10%	0
□fc	20%			20%			20%			20%			20%			0
RCR	RCR:Room Cavity Ratio						Coefficients of Utilization(CU)									
0.0	1.19	1.19	1.19	1.16	1.16	1.16	1.11	1.11	1.11	1.06	1.06	1.06	1.02	1.02	1.02	1.00
1.0	1.11	1.09	1.07	1.09	1.07	1.05	1.05	1.03	1.02	1.01	1.00	.99	.98	.97	.96	.94
2.0	1.04	1.01	.97	1.03	.99	.96	.99	.97	.94	.96	.94	.92	.94	.92	.90	.89
3.0	.98	.94	.90	.97	.93	.89	.94	.91	.88	.92	.89	.86	.90	.87	.85	.84
4.0	.93	.88	.84	.92	.87	.83	.90	.86	.82	.88	.84	.82	.86	.83	.81	.79
5.0	.88	.83	.79	.87	.82	.79	.85	.81	.78	.84	.80	.77	.82	.79	.77	.75
6.0	.84	.78	.74	.83	.78	.74	.81	.77	.74	.80	.76	.73	.79	.75	.73	.71
7.0	.80	.74	.71	.79	.74	.70	.78	.73	.70	.77	.73	.70	.76	.72	.69	.68
8.0	.76	.71	.67	.76	.71	.67	.75	.70	.67	.74	.70	.67	.73	.69	.66	.65
9.0	.73	.68	.64	.72	.67	.64	.72	.67	.64	.71	.67	.64	.70	.66	.63	.62
10.0	.70	.65	.61	.69	.65	.61	.69	.64	.61	.68	.64	.61	.67	.64	.61	.60



C Range: 0 - 360DEG  
 C Interval: 22.5DEG  
 Test Speed: HIGH  
 Temperature:25.3DEG  
 Operators:  
 Test Date:2021-11-15

□ Range: 0 - 90DEG  
 □ Interval: 1.0DEG  
 Test System:EVERFINE GO-SPEX500\_V1 SYSTEM V2.00.421  
 Humidity:65.0%  
 Test Distance:3.080m [K=1.0000]  
 Remarks: PORTER

WEC AND CCEC

Test:U:119.97V I:0.1173A P:13.829W PF:0.9441 Freq:59.98Hz Lamp Flux:822.967x1 lm		
NAME: LED-2-S15W-5CCT-2RRWH-2RTWH	TYPE:	WEIGHT:
SPEC.:2700K 90	DIM.:	SERIAL No.:
MFR.:	SUR.:	Shielding Angle:

<input type="checkbox"/> cc	80%			70%			50%			30%			10%			0
<input type="checkbox"/> w	50%	30%	10%	50%	30%	10%	50%	30%	10%	50%	30%	10%	50%	30%	10%	0
<input type="checkbox"/> fc	20%			20%			20%			20%			20%			0
RCR	RCR:Room Cavity Ratio						Wall Exitance Coefficients (WEC)									
0.0																
1.0	.169	.096	.030	.162	.092	.029	.149	.086	.027	.138	.080	.026	.127	.074	.024	
2.0	.159	.087	.027	.153	.084	.026	.143	.079	.025	.133	.075	.023	.124	.070	.022	
3.0	.149	.080	.024	.145	.078	.023	.136	.074	.022	.128	.070	.021	.120	.066	.021	
4.0	.141	.073	.022	.137	.072	.021	.129	.069	.020	.122	.066	.020	.116	.063	.019	
5.0	.133	.068	.020	.130	.067	.019	.123	.064	.019	.117	.062	.018	.111	.059	.018	
6.0	.126	.063	.018	.123	.062	.018	.117	.060	.018	.112	.058	.017	.107	.056	.017	
7.0	.120	.059	.017	.117	.058	.017	.112	.057	.016	.108	.055	.016	.103	.054	.016	
8.0	.114	.056	.016	.112	.055	.016	.108	.054	.015	.103	.052	.015	.099	.051	.015	
9.0	.109	.053	.015	.107	.052	.015	.103	.051	.014	.099	.050	.014	.096	.049	.014	
10.0	.105	.050	.014	.103	.050	.014	.099	.049	.014	.096	.048	.014	.093	.047	.013	

<input type="checkbox"/> cc	80%			70%			50%			30%			10%			0
<input type="checkbox"/> w	50%	30%	10%	50%	30%	10%	50%	30%	10%	50%	30%	10%	50%	30%	10%	0
<input type="checkbox"/> fc	20%			20%			20%			20%			20%			0
RCR	RCR:Room Cavity Ratio						Ceiling Cavity Exitance Coefficients (CCEC)									
0.0	.190	.190	.190	.163	.163	.163	.111	.111	.111	.064	.064	.064	.020	.020	.020	
1.0	.171	.157	.146	.146	.135	.125	.100	.093	.087	.057	.054	.050	.018	.017	.016	
2.0	.155	.133	.114	.132	.114	.099	.091	.079	.069	.052	.046	.040	.017	.015	.013	
3.0	.141	.113	.091	.121	.098	.079	.083	.068	.056	.048	.040	.033	.015	.013	.011	
4.0	.130	.099	.074	.112	.085	.065	.077	.059	.046	.044	.035	.027	.014	.011	.009	
5.0	.121	.087	.062	.104	.075	.054	.071	.052	.038	.041	.031	.022	.013	.010	.007	
6.0	.113	.077	.052	.097	.067	.045	.067	.047	.032	.039	.028	.019	.013	.009	.006	
7.0	.106	.069	.044	.091	.060	.038	.063	.042	.027	.036	.025	.016	.012	.008	.005	
8.0	.100	.063	.038	.086	.055	.033	.059	.038	.023	.034	.023	.014	.011	.007	.005	
9.0	.094	.058	.033	.081	.050	.029	.056	.035	.020	.033	.021	.012	.011	.007	.004	
10.0	.089	.053	.029	.077	.046	.025	.053	.032	.018	.031	.019	.011	.010	.006	.004	

C Range: 0 - 360DEG  
 C Interval: 22.5DEG  
 Test Speed: HIGH  
 Temperature:25.3DEG  
 Operators:  
 Test Date:2021-11-15

Range: 0 - 90DEG  
 Interval: 1.0DEG  
 Test System:EVERFINE GO-SPEX500\_V1 SYSTEM V2.00.421  
 Humidity:65.0%  
 Test Distance:3.080m [K=1.0000]  
 Remarks: PORTER

**UGR(Unified Glare Rating) Table**

Test:U:119.97V I:0.1173A P:13.829W PF:0.9441 Freq:59.98Hz Lamp Flux:822.967x1 lm		
NAME: LED-2-S15W-5CCT-2RRWH-2RTWH	TYPE:	WEIGHT:
SPEC.:2700K 90	DIM.:	SERIAL No.:
MFR.:	SUR.:	Shielding Angle:

ceiling/cavity	0.7	0.7	0.5	0.5	0.3	0.7	0.7	0.5	0.5	0.3
walls	0.5	0.3	0.5	0.3	0.3	0.5	0.3	0.5	0.3	0.3
working plane	0.2	0.2	0.2	0.2	0.2	0.2	0.2	0.2	0.2	0.2
Room dimensions	Viewed crosswise					Viewed endwise				
x = 2H y = 2H	5.1	5.9	5.3	6.1	6.2	4.4	5.2	4.6	5.4	5.5
3H	5.6	6.3	5.8	6.5	6.7	4.9	5.7	5.1	5.9	6.1
4H	5.8	6.5	6.0	6.7	6.9	5.1	5.9	5.4	6.1	6.3
6H	5.9	6.6	6.2	6.9	7.1	5.3	6.0	5.6	6.2	6.5
8H	6.0	6.7	6.3	6.9	7.2	5.3	6.0	5.6	6.2	6.5
12H	6.0	6.6	6.3	6.9	7.1	5.3	5.9	5.6	6.2	6.5
4H 2H	5.2	5.9	5.4	6.1	6.4	4.6	5.3	4.8	5.5	5.7
3H	5.8	6.5	6.1	6.7	7.0	5.3	5.9	5.6	6.2	6.4
4H	6.1	6.7	6.5	7.0	7.3	5.6	6.2	5.9	6.5	6.8
6H	6.4	6.9	6.8	7.3	7.6	5.8	6.4	6.2	6.7	7.0
8H	6.5	7.0	6.9	7.3	7.7	5.9	6.4	6.3	6.7	7.1
12H	6.5	6.9	6.9	7.3	7.7	5.9	6.3	6.3	6.7	7.1
8H 4H	6.2	6.7	6.6	7.0	7.4	5.7	6.2	6.1	6.5	6.9
6H	6.6	7.0	7.0	7.4	7.8	6.0	6.4	6.5	6.8	7.2
8H	6.7	7.1	7.1	7.5	7.9	6.1	6.5	6.6	6.9	7.3
12H	6.7	7.0	7.2	7.5	8.0	6.1	6.4	6.6	6.9	7.4
12H 4H	6.2	6.6	6.6	7.0	7.4	5.7	6.1	6.1	6.5	6.9
6H	6.6	6.9	7.0	7.3	7.8	6.0	6.4	6.5	6.8	7.3
8H	6.7	7.0	7.2	7.5	7.9	6.1	6.5	6.6	6.9	7.4
Variations with the observer position at spacings:										
S = 1.0H	+ 1.0 / - 0.9					+ 0.8 / - 0.9				
1.5H	+ 1.7 / - 0.6					+ 1.2 / - 0.6				
2.0H	+ 1.1 / - 0.7					+ 1.1 / - 0.8				

CIE Pub.117, 823.0 lm Total Lamp Luminous Flux Correct (8log(F/F0) = -0.7)  
 Area: 0.111111 m2

C Range: 0 - 360DEG  
 C Interval: 22.5DEG  
 Test Speed: HIGH  
 Temperature:25.3DEG  
 Operators:  
 Test Date:2021-11-15

Range: 0 - 90DEG  
 Interval: 1.0DEG  
 Test System:EVERFINE GO-SPEX500\_V1 SYSTEM V2.00.421  
 Humidity:65.0%  
 Test Distance:3.080m [K=1.0000]  
 Remarks: PORTER

**UTILIZATION FACTORS TABLE**

Test:U:119.97V I:0.1173A P:13.829W PF:0.9441 Freq:59.98Hz Lamp Flux:822.967x1 lm		
NAME: LED-2-S15W-5CCT-2RRWH-2RTWH	TYPE:	WEIGHT:
SPEC.:2700K 90	DIM.:	SERIAL No.:
MFR.:	SUR.:	Shielding Angle:

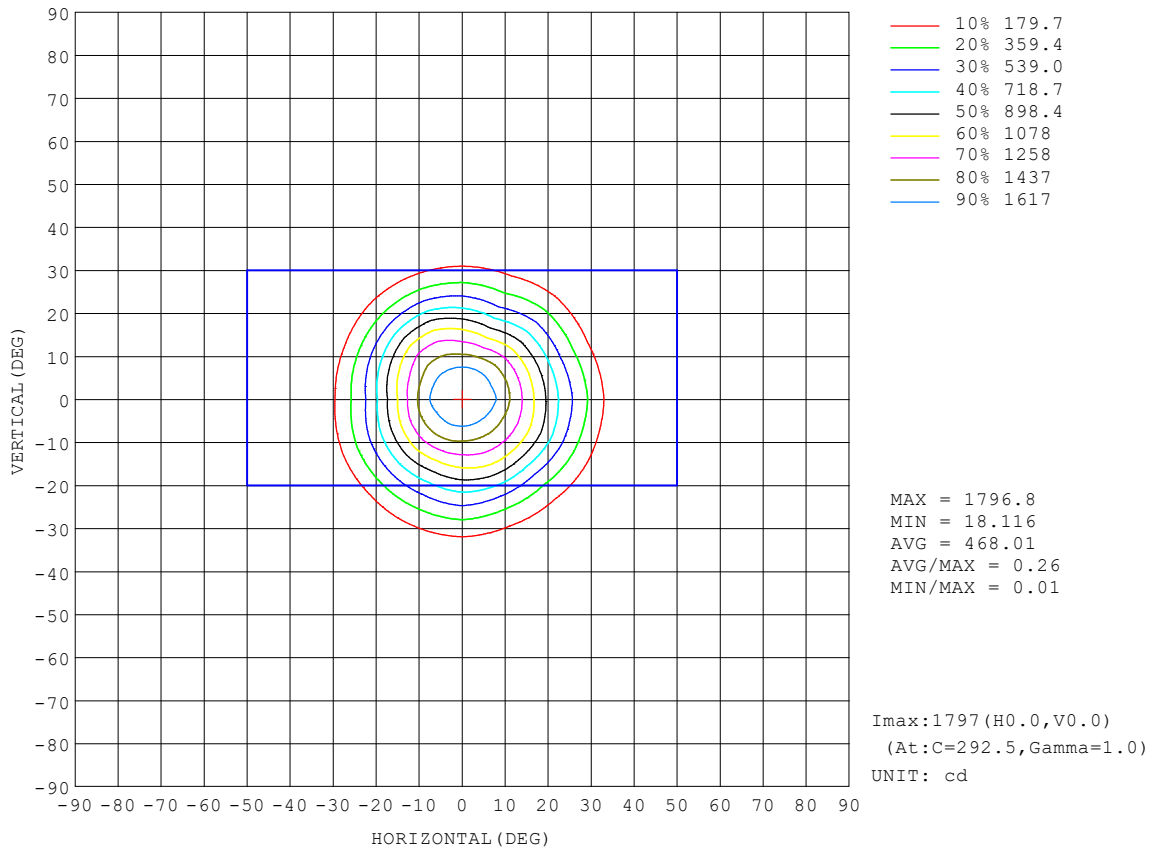
REFLECTANCE										
Ceiling	0.8	0.8	0.8	0.7	0.7	0.7	0.5	0.5	0.5	0
Walls	0.7	0.5	0.3	0.7	0.5	0.3	0.7	0.5	0.3	0
Working plane	0.2	0.2	0.2	0.2	0.2	0.2	0.2	0.2	0.2	0
ROOM INDEX	UTILIZATION FACTORS (PERCENT) $k(RI) \times RCR = 5$									
k = 0.60	87	80	76	86	80	76	85	80	76	72
0.80	94	88	84	93	88	84	92	87	84	80
1.00	98	93	89	98	92	89	96	92	88	84
1.25	103	97	94	101	97	93	99	95	92	88
1.50	105	100	97	104	100	96	102	98	95	91
2.00	108	104	100	107	103	100	104	101	98	93
2.50	110	106	103	108	105	102	105	102	100	94
3.00	111	108	105	110	106	104	106	104	102	95
4.00	114	111	108	111	109	107	108	106	104	97
5.00	115	112	111	113	111	109	109	107	106	98
ROOM INDEX	UF(total)									Direct
According to DIN EN 13032-2 2004			Suspended				SHRNOM = 1.25			

C Range: 0 - 360DEG  
 C Interval: 22.5DEG  
 Test Speed: HIGH  
 Temperature:25.3DEG  
 Operators:  
 Test Date:2021-11-15

Range: 0 - 90DEG  
 Interval: 1.0DEG  
 Test System:EVERFINE GO-SPEX500\_V1 SYSTEM V2.00.421  
 Humidity:65.0%  
 Test Distance:3.080m [K=1.0000]  
 Remarks: PORTER

**ISOCANDELA DIAGRAM**

Test:U:119.97V I:0.1173A P:13.829W PF:0.9441 Freq:59.98Hz Lamp Flux:822.967x1 lm		
NAME: LED-2-S15W-5CCT-2RRWH-2RTWH	TYPE:	WEIGHT:
SPEC.:2700K 90	DIM.:	SERIAL No.:
MFR.:	SUR.:	Shielding Angle:



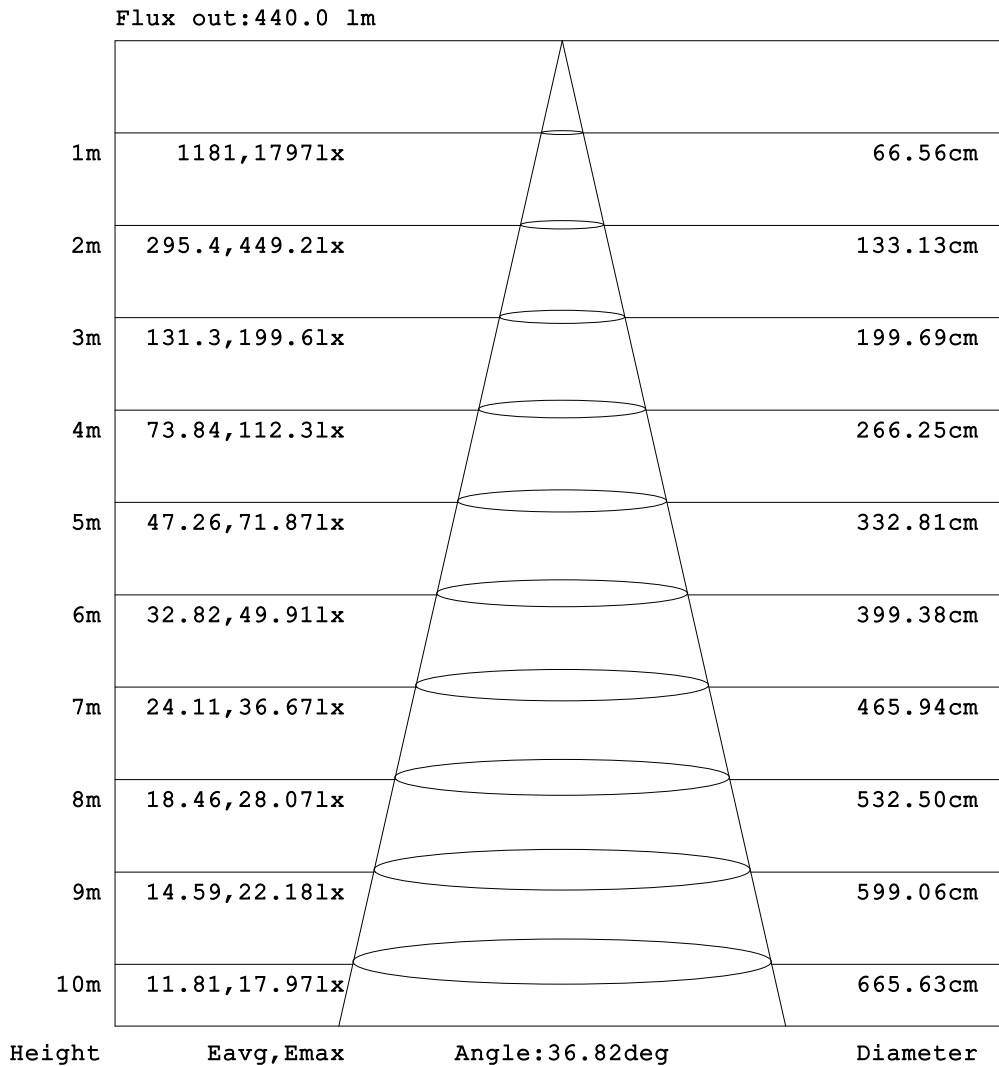
C Range: 0 - 360DEG  
 C Interval: 22.5DEG  
 Test Speed: HIGH  
 Temperature:25.3DEG  
 Operators:  
 Test Date:2021-11-15

Range: 0 - 90DEG  
 Interval: 1.0DEG  
 Test System:EVERFINE GO-SPEX500\_V1 SYSTEM V2.00.421  
 Humidity:65.0%  
 Test Distance:3.080m [K=1.0000]  
 Remarks: PORTER



**AAI Figure**

Test:U:119.97V I:0.1173A P:13.829W PF:0.9441 Freq:59.98Hz Lamp Flux:822.967x1 lm		
NAME: LED-2-S15W-5CCT-2RRWH-2RTWH	TYPE:	WEIGHT:
SPEC.:2700K 90	DIM.:	SERIAL No.:
MFR.:	SUR.:	Shielding Angle:



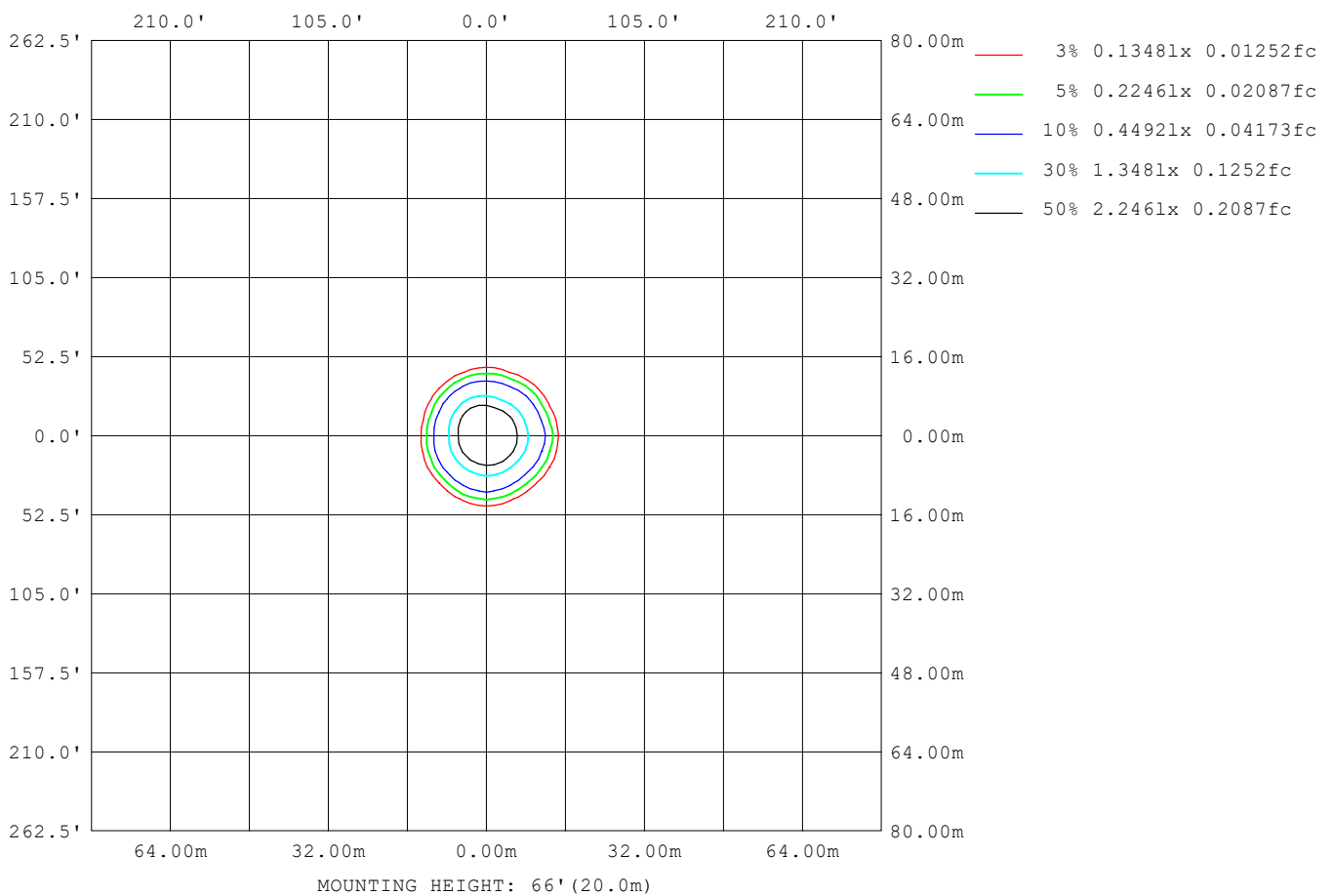
Note:The Curves indicate the illuminated area and the average illumination when the luminaire is at different distance.

C Range: 0 - 360DEG  
 C Interval: 22.5DEG  
 Test Speed: HIGH  
 Temperature:25.3DEG  
 Operators:  
 Test Date:2021-11-15

Range: 0 - 90DEG  
 Interval: 1.0DEG  
 Test System:EVERFINE GO-SPEX500\_V1 SYSTEM V2.00.421  
 Humidity:65.0%  
 Test Distance:3.080m [K=1.0000]  
 Remarks: PORTER

**ISOLUX DIAGRAM**

Test:U:119.97V I:0.1173A P:13.829W PF:0.9441 Freq:59.98Hz Lamp Flux:822.967x1 lm		
NAME: LED-2-S15W-5CCT-2RRWH-2RTWH	TYPE:	WEIGHT:
SPEC.:2700K 90	DIM.:	SERIAL No.:
MFR.:	SUR.:	Shielding Angle:



C Range: 0 - 360DEG  
C Interval: 22.5DEG  
Test Speed: HIGH  
Temperature:25.3DEG  
Operators:  
Test Date:2021-11-15

Range: 0 - 90DEG  
 Interval: 1.0DEG  
Test System:EVERFINE GO-SPEX500\_V1 SYSTEM V2.00.421  
Humidity:65.0%  
Test Distance:3.080m [K=1.0000]  
Remarks: PORTER

**LED Avg.L Report**

Test:U:119.97V I:0.1173A P:13.829W PF:0.9441 Freq:59.98Hz Lamp Flux:822.967x1 lm		
NAME: LED-2-S15W-5CCT-2RRWH-2RTWH	TYPE:	WEIGHT:
SPEC.:2700K 90	DIM.:	SERIAL No.:
MFR.:	SUR.:	Shielding Angle:

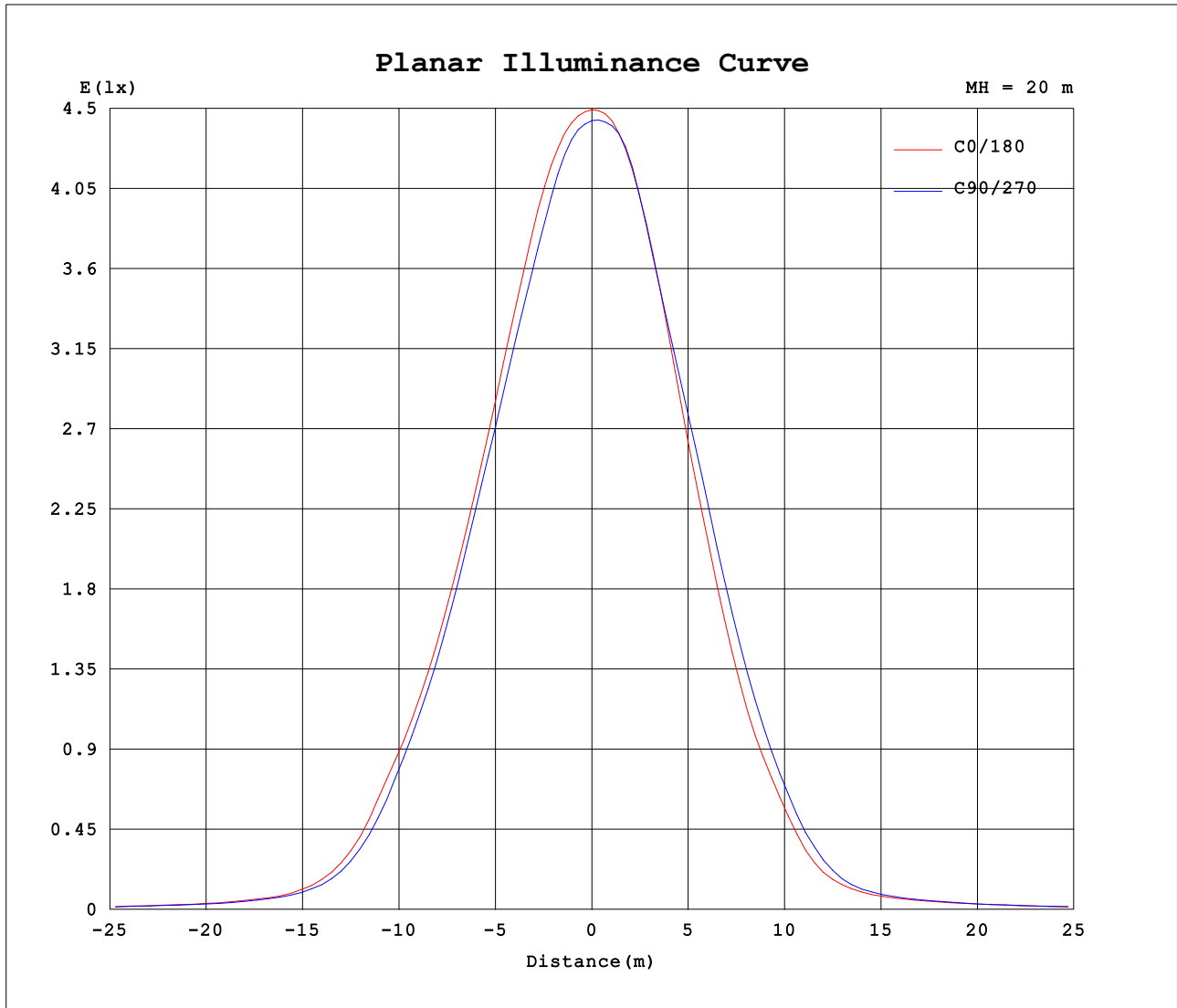
AvgL	cd/m2
L_0~180 (65) av	237
L_0~180 (75) av	190
L_0~180 (85) av	83
L_90~270 (65) av	236
L_90~270 (75) av	190
L_90~270 (85) av	55
L_45 (65) av	237
L_45 (75) av	190
L_45 (85) av	115

Standard: GB/T 29293-2012

C Range: 0 - 360DEG  
 C Interval: 22.5DEG  
 Test Speed: HIGH  
 Temperature:25.3DEG  
 Operators:  
 Test Date:2021-11-15

Range: 0 - 90DEG  
 Interval: 1.0DEG  
 Test System:EVERFINE GO-SPEX500\_V1 SYSTEM V2.00.421  
 Humidity:65.0%  
 Test Distance:3.080m [K=1.0000]  
 Remarks: PORTER

**Planar Illuminance Curve**



C Range: 0 - 360DEG  
 C Interval: 22.5DEG  
 Test Speed: HIGH  
 Temperature:25.3DEG  
 Operators:  
 Test Date:2021-11-15

Range: 0 - 90DEG  
 Interval: 1.0DEG  
 Test System:EVERFINE GO-SPEX500\_V1 SYSTEM V2.00.421  
 Humidity:65.0%  
 Test Distance:3.080m [K=1.0000]  
 Remarks: PORTER

LUMINOUS DISTRIBUTION INTENSITY DATA

Test:U:119.97V I:0.1173A P:13.829W PF:0.9441 Freq:59.98Hz Lamp Flux:822.967x1 lm		
NAME: LED-2-S15W-5CCT-2RRWH-2RTWH	TYPE:	WEIGHT:
SPEC.:2700K 90	DIM.:	SERIAL No.:
MFR.:	SUR.:	Shielding Angle:

Table--1

UNIT: cd

C (DEG) □ (DEG)	0	22.5	45	67.5	90	112.5	135	157.5	180	202.5	225	247.5	270	292.5	315	337.5			
0	1776	1776	1776	1776	1776	1776	1776	1776	1776	1776	1776	1776	1776	1776	1776	1776			
5	1711	1701	1684	1678	1676	1680	1682	1698	1709	1716	1730	1735	1737	1729	1721	1715			
10	1486	1448	1439	1428	1424	1444	1459	1471	1447	1449	1491	1488	1466	1476	1508	1514			
15	1175	1196	1180	1169	1134	1111	1134	1117	1065	1137	1231	1232	1160	1112	1183	1196			
20	855	880	830	827	817	771	776	753	688	763	852	871	804	739	836	851			
25	568	553	478	485	525	482	465	451	392	434	476	502	479	431	524	528			
30	309	274	222	228	259	231	197	191	161	170	195	210	218	204	254	258			
35	122	112	95.9	94.8	102	93.4	83.1	78.5	71.7	72.6	81.9	84.1	84.6	86.8	101	102			
40	59.0	57.4	53.9	53.8	54.6	51.6	48.9	48.3	47.3	47.7	49.4	50.6	51.8	52.0	55.1	55.4			
45	38.8	38.7	37.7	37.0	36.0	35.5	35.2	35.2	35.2	35.2	35.7	36.1	36.9	37.4	37.9	38.2			
50	29.7	29.4	28.7	28.1	27.4	26.9	26.4	26.5	26.4	26.5	27.1	27.6	28.4	28.9	29.3	29.3			
55	20.9	20.7	20.2	20.0	19.2	19.0	18.7	19.0	19.0	19.1	19.6	19.9	20.6	20.6	21.0	20.8			
60	15.3	15.2	14.8	14.6	14.3	14.3	14.2	14.5	14.6	14.7	15.0	15.2	15.5	15.6	15.7	15.5			
65	11.4	11.3	10.9	10.8	10.6	10.6	10.6	10.8	10.9	10.9	11.2	11.3	11.6	11.7	11.7	11.5			
70	8.21	8.09	7.90	7.77	7.60	7.57	7.58	7.75	7.84	7.91	8.08	8.22	8.42	8.49	8.48	8.30			
75	5.62	5.52	5.38	5.29	5.15	5.12	5.11	5.24	5.30	5.36	5.49	5.60	5.76	5.82	5.82	5.67			
80	3.46	3.39	3.29	3.10	2.93	2.97	3.06	3.14	3.18	3.22	3.21	3.06	3.07	3.20	3.46	3.50			
85	0.69	1.64	1.18	0.93	0.69	0.84	1.00	1.41	0.92	1.36	1.07	0.85	0.38	0.87	1.19	1.58			
90	0.03	0.03	0.04	0.03	0.03	0.03	0.03	0.03	0.04	0.04	0.03	0.03	0.04	0.03	0.03	0.04			

C Range: 0 - 360DEG  
 C Interval: 22.5DEG  
 Test Speed: HIGH  
 Temperature:25.3DEG  
 Operators:  
 Test Date:2021-11-15

□ Range: 0 - 90DEG  
 □ Interval: 1.0DEG  
 Test System:EVERFINE GO-SPEX500\_V1 SYSTEM V2.00.421  
 Humidity:65.0%  
 Test Distance:3.080m [K=1.0000]  
 Remarks: PORTER