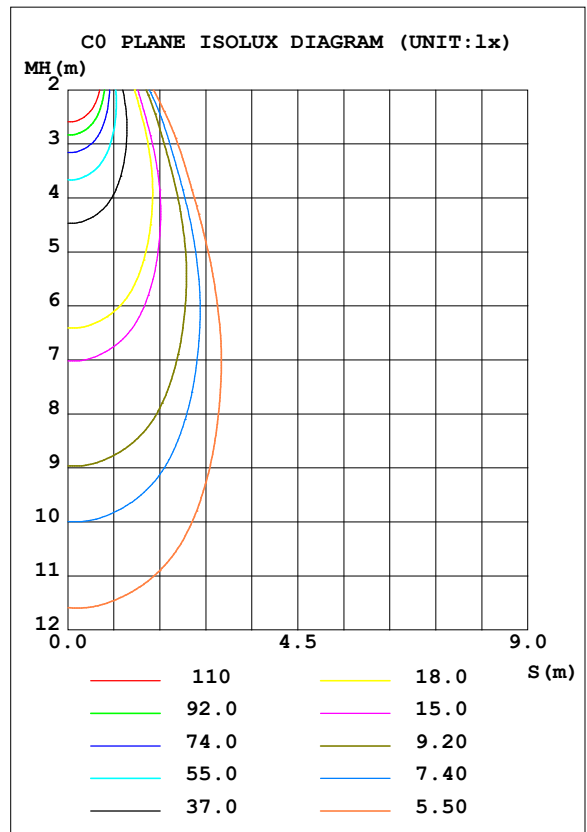
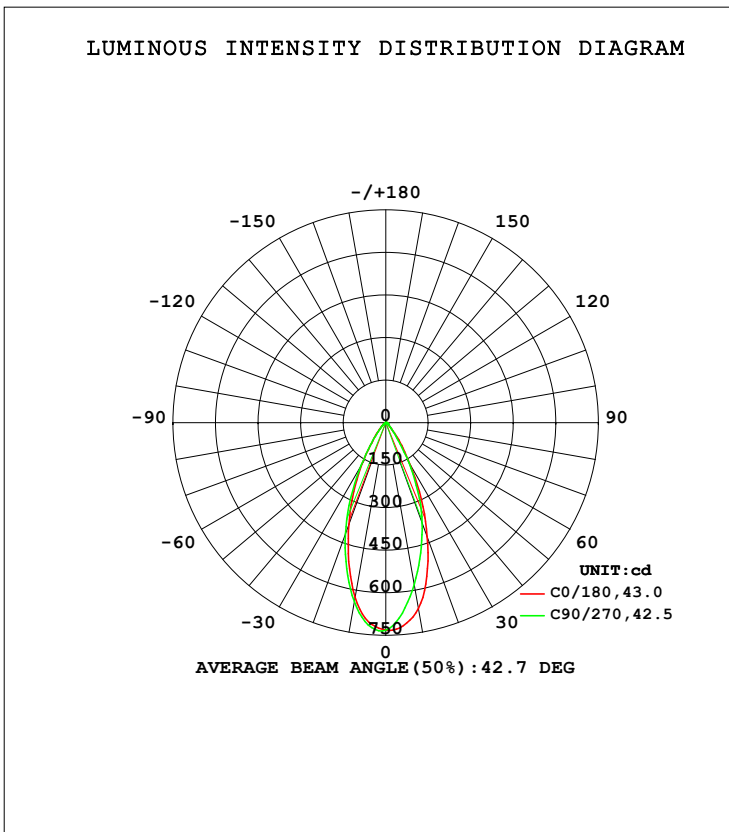


LUMINAIRE PHOTOMETRIC TEST REPORT

Test:U:119.95V I:0.0854A P:7.1878W PF:0.9080 Freq:59.98Hz Lamp Flux:429.523x1 lm		
NAME: LED-1-S7W-5CCT	TYPE:	WEIGHT:
SPEC.:2700K 90	DIM.:	SERIAL No.:
MFR.:	SUR.:	Shielding Angle:

DATA OF LAMP		PHOTOMETRIC DATA Eff: 59.76 lm/W			
MODEL	LED-1-S7W-5CCT	Imax (cd)	736.7	S/MH (C0/180)	0.66
NOMINAL POWER (W)	7	LOR (%)	100.0	S/MH (C90/270)	0.70
RATED VOLTAGE (V)	120	TOTAL FLUX (lm)	429.52	<input type="checkbox"/> UP, DN (C0-180)	0.0, 48.9
NOMINAL FLUX (lm)	429.523	CIE CLASS	DIRECT	<input type="checkbox"/> UP, DN (C180-360)	0.0, 51.1
LAMPS INSIDE	1	<input type="checkbox"/> up (%)	0.0	CIBSE SHR NOM	0.50
TEST VOLTAGE (V)	12	<input type="checkbox"/> down (%)	100.0	CIBSE SHR MAX	0.70



C Range: 0 - 360DEG
 C Interval: 22.5DEG
 Test Speed: HIGH
 Temperature: 25.3DEG
 Operators:
 Test Date: 2021-11-30

Range: 0 - 90DEG
 Interval: 1.0DEG
 Test System: EVERFINE GO-SPEX500_V1 SYSTEM V2.00.421
 Humidity: 65.0%
 Test Distance: 3.080m [K=1.0000]
 Remarks:

ZONAL FLUX DIAGRAM

ZONAL FLUX DIAGRAM:

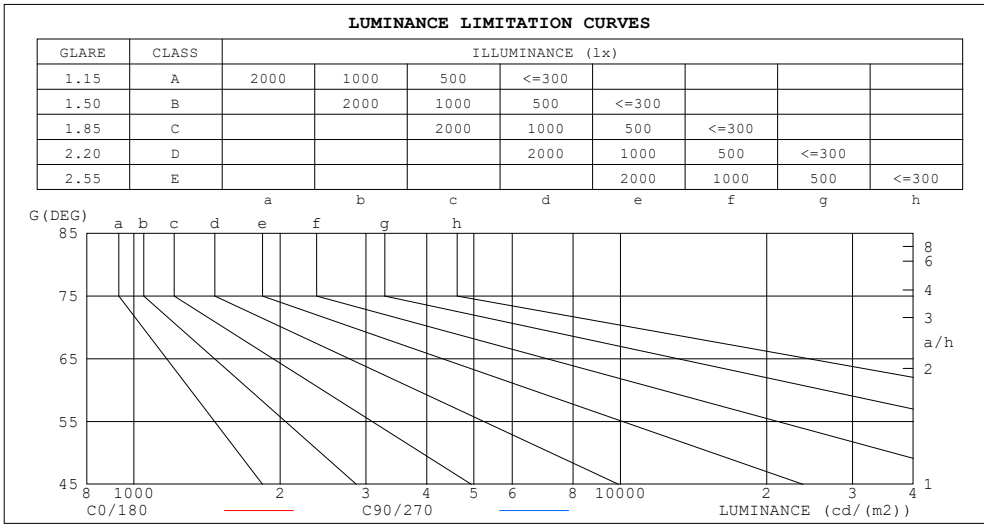
mm	C0	C45	C90	C135	C180	C225	C270	C315	mm	□ zone	□ total	%lum, lamp
10	665.1	608.1	578.4	594.6	624.9	633.9	641.1	672.5	0- 10	64.70	64.70	15.1,15.1
20	428.2	397.1	375.4	373.7	381.4	394.8	416.8	437.8	10- 20	143.1	207.8	48.4,48.4
30	175.2	164.1	165.2	166.1	167.8	166.9	174.0	180.0	20- 30	127.5	335.3	78.1,78.1
40	48.10	41.35	41.74	47.13	49.90	46.23	44.33	47.11	30- 40	58.18	393.5	91.6,91.6
50	13.92	14.08	14.88	16.33	16.38	15.35	14.06	13.90	40- 50	20.17	413.6	96.3,96.3
60	6.242	6.150	6.273	6.716	6.963	6.782	6.436	6.297	50- 60	9.022	422.7	98.4,98.4
70	2.903	2.905	3.026	3.167	3.201	3.069	2.965	2.928	60- 70	4.445	427.1	99.4,99.4
80	1.117	1.107	0.9352	1.156	1.232	0.9722	0.7199	0.9727	70- 80	2.118	429.2	99.9,99.9
90	0.0003	0	0.0003	0.0013	0.0023	0	0.0047	0.0037	80- 90	0.2911	429.5	100,100
100									90-100			
110									100-110			
120									110-120			
130									120-130			
140									130-140			
150									140-150			
160									150-160			
170									160-170			
180									170-180			
DEG	LUMINOUS INTENSITY:cd									UNIT:lm		

C Range: 0 - 360DEG
 C Interval: 22.5DEG
 Test Speed: HIGH
 Temperature:25.3DEG
 Operators:
 Test Date:2021-11-30

□ Range: 0 - 90DEG
 □ Interval: 1.0DEG
 Test System:EVERFINE GO-SPEX500_V1 SYSTEM V2.00.421
 Humidity:65.0%
 Test Distance:3.080m [K=1.0000]
 Remarks:

LUMINANCE LIMITATION CURVES

Test:U:119.95V I:0.0854A P:7.1878W PF:0.9080 Freq:59.98Hz Lamp Flux:429.523x1 lm		
NAME: LED-1-S7W-5CCT	TYPE:	WEIGHT:
SPEC.:2700K 90	DIM.:	SERIAL No.:
MFR.:	SUR.:	Shielding Angle:



LUMINANCE cd/(m2)		
G (DEG)	C0/180	C90/270
85	11	1
80	58	48
75	68	70
70	77	79
65	87	89
60	113	113
55	150	155
50	197	208
45	308	308

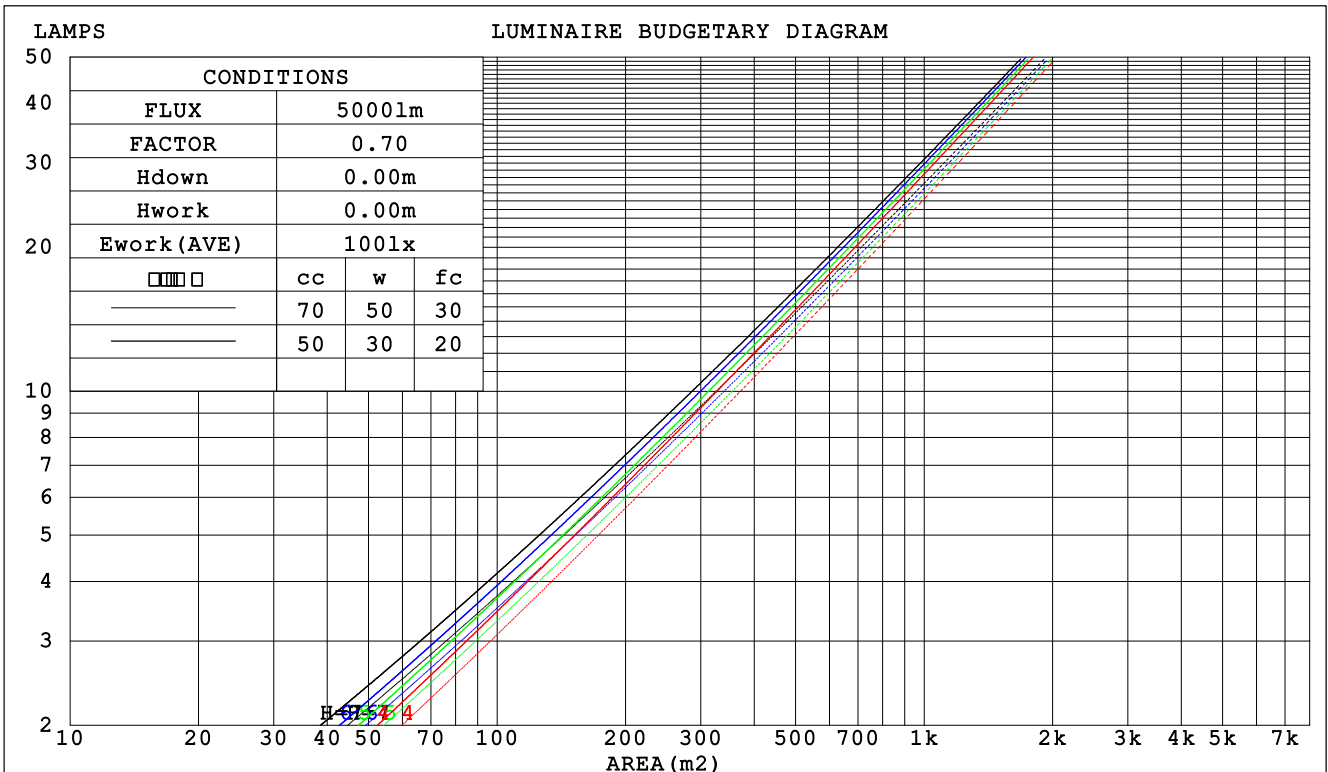
C Range: 0 - 360DEG
 C Interval: 22.5DEG
 Test Speed: HIGH
 Temperature:25.3DEG
 Operators:
 Test Date:2021-11-30

Range: 0 - 90DEG
 Interval: 1.0DEG
 Test System:EVERFINE GO-SPEX500_V1 SYSTEM V2.00.421
 Humidity:65.0%
 Test Distance:3.080m [K=1.0000]
 Remarks:

CU AND LUMINAIRE BUDGETARY ESTIMATE DIAGRAM

Test:U:119.95V I:0.0854A P:7.1878W PF:0.9080 Freq:59.98Hz Lamp Flux:429.523x1 lm		
NAME: LED-1-S7W-5CCT	TYPE:	WEIGHT:
SPEC.:2700K 90	DIM.:	SERIAL No.:
MFR.:	SUR.:	Shielding Angle:

□cc	80%			70%			50%			30%			10%			0
□w	50%	30%	10%	50%	30%	10%	50%	30%	10%	50%	30%	10%	50%	30%	10%	0
□fc	20%			20%			20%			20%			20%			0
RCR	RCR:Room Cavity Ratio						Coefficients of Utilization(CU)									
0.0	1.19	1.19	1.19	1.16	1.16	1.16	1.11	1.11	1.11	1.06	1.06	1.06	1.02	1.02	1.02	1.00
1.0	1.11	1.09	1.06	1.09	1.07	1.05	1.05	1.03	1.01	1.01	.00	.98	.98	.97	.96	.94
2.0	1.04	.00	.96	1.02	.98	.95	.99	.96	.93	.96	.93	.91	.93	.91	.89	.88
3.0	.97	.92	.88	.96	.91	.88	.93	.89	.86	.91	.88	.85	.88	.86	.84	.82
4.0	.91	.86	.82	.90	.85	.81	.88	.84	.80	.86	.82	.80	.84	.81	.79	.77
5.0	.86	.80	.76	.85	.80	.76	.83	.79	.75	.82	.78	.75	.80	.77	.74	.73
6.0	.81	.76	.72	.80	.75	.71	.79	.74	.71	.78	.74	.70	.76	.73	.70	.69
7.0	.77	.71	.67	.76	.71	.67	.75	.70	.67	.74	.70	.66	.73	.69	.66	.65
8.0	.73	.67	.64	.73	.67	.63	.71	.67	.63	.70	.66	.63	.70	.66	.63	.61
9.0	.70	.64	.60	.69	.64	.60	.68	.63	.60	.67	.63	.60	.66	.62	.60	.58
10.0	.66	.61	.57	.66	.61	.57	.65	.60	.57	.64	.60	.57	.64	.60	.57	.55



C Range: 0 - 360DEG
 C Interval: 22.5DEG
 Test Speed: HIGH
 Temperature:25.3DEG
 Operators:
 Test Date:2021-11-30

□ Range: 0 - 90DEG
 □ Interval: 1.0DEG
 Test System:EVERFINE GO-SPEX500_V1 SYSTEM V2.00.421
 Humidity:65.0%
 Test Distance:3.080m [K=1.0000]
 Remarks:

WEC AND CCEC

Test:U:119.95V I:0.0854A P:7.1878W PF:0.9080 Freq:59.98Hz Lamp Flux:429.523x1 lm		
NAME: LED-1-S7W-5CCT	TYPE:	WEIGHT:
SPEC.:2700K 90	DIM.:	SERIAL No.:
MFR.:	SUR.:	Shielding Angle:

<input type="checkbox"/> cc	80%	70%	50%	30%	10%	0
<input type="checkbox"/> w	50% 30% 10%	50% 30% 10%	50% 30% 10%	50% 30% 10%	50% 30% 10%	0
<input type="checkbox"/> fc	20%	20%	20%	20%	20%	0
RCR	RCR:Room Cavity Ratio		Wall Exitance Coefficients (WEC)			
0.0						
1.0	.174 .099 .031	.167 .095 .030	.154 .089 .028	.143 .082 .026	.132 .077 .025	
2.0	.165 .091 .028	.160 .088 .027	.149 .083 .026	.139 .078 .024	.130 .074 .023	
3.0	.157 .083 .025	.152 .081 .024	.143 .077 .024	.134 .074 .023	.127 .070 .022	
4.0	.148 .077 .023	.144 .075 .022	.136 .072 .022	.129 .069 .021	.123 .067 .020	
5.0	.141 .072 .021	.137 .070 .021	.130 .068 .020	.124 .066 .020	.118 .063 .019	
6.0	.134 .067 .019	.131 .066 .019	.125 .064 .019	.119 .062 .018	.114 .060 .018	
7.0	.128 .063 .018	.125 .062 .018	.120 .060 .017	.115 .059 .017	.110 .057 .017	
8.0	.122 .060 .017	.119 .059 .017	.115 .057 .016	.110 .056 .016	.106 .055 .016	
9.0	.117 .056 .016	.114 .056 .016	.110 .055 .015	.106 .053 .015	.103 .052 .015	
10.0	.112 .054 .015	.110 .053 .015	.106 .052 .015	.103 .051 .014	.099 .050 .014	

<input type="checkbox"/> cc	80%	70%	50%	30%	10%	0
<input type="checkbox"/> w	50% 30% 10%	50% 30% 10%	50% 30% 10%	50% 30% 10%	50% 30% 10%	0
<input type="checkbox"/> fc	20%	20%	20%	20%	20%	0
RCR	RCR:Room Cavity Ratio		Ceiling Cavity Exitance Coefficients (CCEC)			
0.0	.190 .190 .190	.163 .163 .163	.111 .111 .111	.064 .064 .064	.020 .020 .020	
1.0	.171 .157 .145	.146 .135 .125	.100 .093 .086	.058 .054 .050	.018 .017 .016	
2.0	.155 .133 .113	.133 .114 .098	.091 .079 .068	.053 .046 .040	.017 .015 .013	
3.0	.143 .114 .090	.122 .098 .078	.084 .068 .055	.048 .040 .032	.016 .013 .011	
4.0	.132 .099 .073	.113 .085 .064	.078 .059 .045	.045 .035 .027	.014 .011 .009	
5.0	.123 .087 .060	.106 .075 .053	.073 .053 .037	.042 .031 .022	.014 .010 .007	
6.0	.115 .078 .051	.099 .067 .044	.068 .047 .031	.040 .028 .019	.013 .009 .006	
7.0	.109 .070 .043	.093 .061 .037	.064 .043 .027	.037 .025 .016	.012 .008 .005	
8.0	.103 .064 .037	.088 .055 .032	.061 .039 .023	.036 .023 .014	.012 .007 .004	
9.0	.097 .058 .032	.084 .051 .028	.058 .036 .020	.034 .021 .012	.011 .007 .004	
10.0	.093 .054 .028	.080 .047 .024	.055 .033 .017	.032 .019 .010	.010 .006 .003	

C Range: 0 - 360DEG
 C Interval: 22.5DEG
 Test Speed: HIGH
 Temperature:25.3DEG
 Operators:
 Test Date:2021-11-30

Range: 0 - 90DEG
 Interval: 1.0DEG
 Test System:EVERFINE GO-SPEX500_V1 SYSTEM V2.00.421
 Humidity:65.0%
 Test Distance:3.080m [K=1.0000]
 Remarks:

UGR(Unified Glare Rating) Table

Test:U:119.95V I:0.0854A P:7.1878W PF:0.9080 Freq:59.98Hz Lamp Flux:429.523x1 lm										
NAME: LED-1-S7W-5CCT					TYPE:			WEIGHT:		
SPEC.:2700K 90					DIM.:			SERIAL No.:		
MFR.:					SUR.:			Shielding Angle:		
ceiling/cavity	0.7	0.7	0.5	0.5	0.3	0.7	0.7	0.5	0.5	0.3
walls	0.5	0.3	0.5	0.3	0.3	0.5	0.3	0.5	0.3	0.3
working plane	0.2	0.2	0.2	0.2	0.2	0.2	0.2	0.2	0.2	0.2
Room dimensions	Viewed crosswise					Viewed endwise				
x = 2H y = 2H	6.2	7.1	6.4	7.2	7.4	5.7	6.6	5.9	6.7	6.9
3H	6.2	7.1	6.5	7.3	7.5	5.8	6.6	6.0	6.8	7.0
4H	6.3	7.0	6.5	7.3	7.5	5.8	6.6	6.1	6.8	7.1
6H	6.3	7.0	6.6	7.2	7.5	5.8	6.6	6.1	6.8	7.1
8H	6.2	6.9	6.5	7.2	7.5	5.8	6.5	6.1	6.8	7.0
12H	6.2	6.9	6.5	7.1	7.4	5.8	6.4	6.1	6.7	7.0
4H 2H	6.1	6.9	6.3	7.1	7.3	5.6	6.4	5.9	6.6	6.8
3H	6.2	6.9	6.5	7.2	7.4	5.8	6.5	6.1	6.8	7.0
4H	6.3	6.9	6.6	7.2	7.5	5.9	6.5	6.3	6.8	7.1
6H	6.3	6.9	6.7	7.2	7.6	6.0	6.5	6.3	6.8	7.2
8H	6.3	6.8	6.7	7.2	7.5	5.9	6.4	6.3	6.8	7.2
12H	6.3	6.7	6.7	7.1	7.5	5.9	6.3	6.3	6.7	7.1
8H 4H	6.2	6.7	6.6	7.1	7.5	5.9	6.4	6.3	6.7	7.1
6H	6.3	6.7	6.8	7.1	7.6	6.0	6.4	6.4	6.8	7.2
8H	6.3	6.7	6.8	7.1	7.6	5.9	6.3	6.4	6.7	7.2
12H	6.3	6.6	6.8	7.1	7.5	5.9	6.2	6.3	6.6	7.1
12H 4H	6.2	6.7	6.6	7.0	7.4	5.8	6.3	6.2	6.7	7.1
6H	6.3	6.7	6.7	7.1	7.5	5.9	6.3	6.4	6.7	7.2
8H	6.3	6.6	6.8	7.1	7.5	5.9	6.2	6.4	6.7	7.1
Variations with the observer position at spacings:										
S = 1.0H	+ 2.6 / - 3.0					+ 1.8 / - 2.4				
1.5H	+ 4.2 / - 2.3					+ 3.1 / - 1.9				
2.0H	+ 2.7 / - 1.7					+ 2.7 / - 1.9				

CIE Pub.117, 429.5 lm Total Lamp Luminous Flux Correct (8log(F/F0) = -2.9)
 Area: 0.111111 m2

C Range: 0 - 360DEG
 C Interval: 22.5DEG
 Test Speed: HIGH
 Temperature:25.3DEG
 Operators:
 Test Date:2021-11-30

Range: 0 - 90DEG
 Interval: 1.0DEG
 Test System:EVERFINE GO-SPEX500_V1 SYSTEM V2.00.421
 Humidity:65.0%
 Test Distance:3.080m [K=1.0000]
 Remarks:

UTILIZATION FACTORS TABLE

Test:U:119.95V I:0.0854A P:7.1878W PF:0.9080 Freq:59.98Hz Lamp Flux:429.523x1 lm		
NAME: LED-1-S7W-5CCT	TYPE:	WEIGHT:
SPEC.:2700K 90	DIM.:	SERIAL No.:
MFR.:	SUR.:	Shielding Angle:

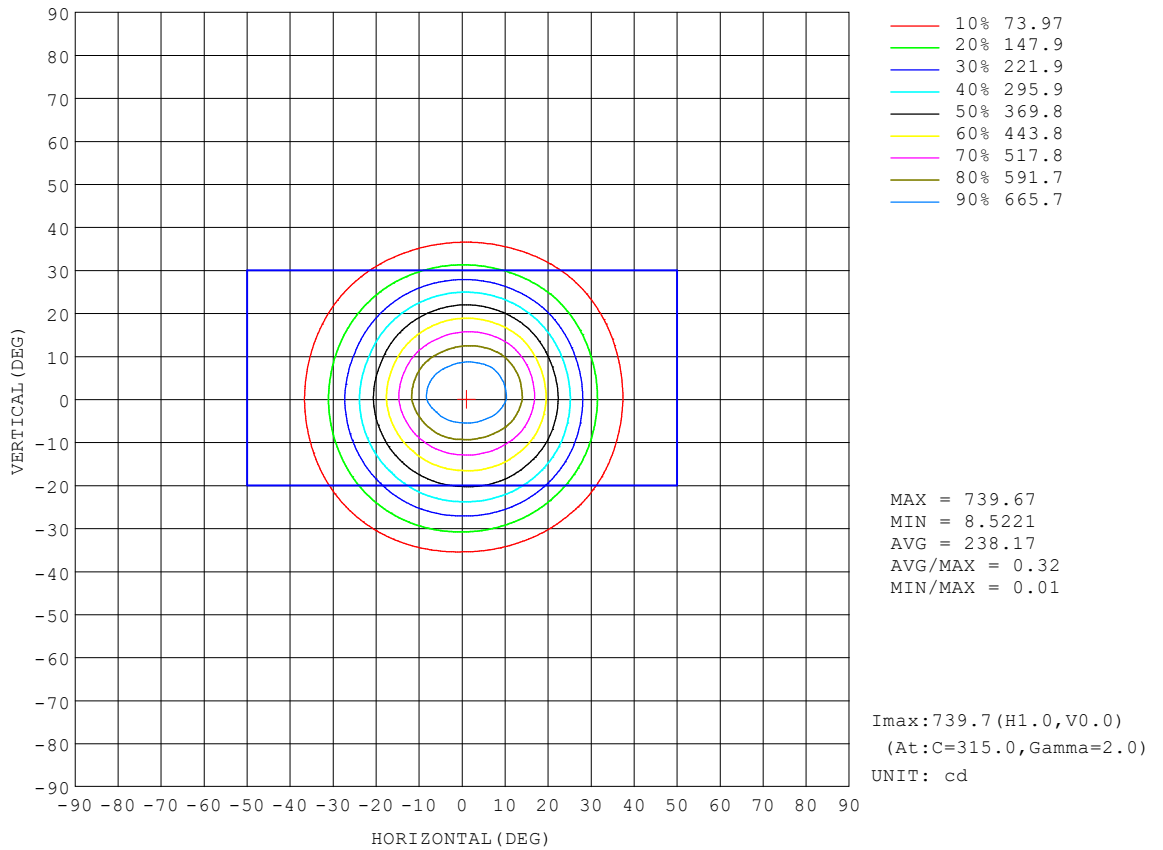
REFLECTANCE										
Ceiling	0.8	0.8	0.8	0.7	0.7	0.7	0.5	0.5	0.5	0
Walls	0.7	0.5	0.3	0.7	0.5	0.3	0.7	0.5	0.3	0
Working plane	0.2	0.2	0.2	0.2	0.2	0.2	0.2	0.2	0.2	0
ROOM INDEX	UTILIZATION FACTORS (PERCENT) $k(RI) \times RCR = 5$									
k = 0.60	86	80	76	86	80	76	85	79	76	72
0.80	94	88	84	93	87	84	92	87	83	80
1.00	98	93	89	98	92	89	96	92	88	84
1.25	103	97	94	101	97	93	100	95	92	88
1.50	105	100	97	104	100	96	102	98	95	91
2.00	108	104	101	107	103	100	104	101	98	93
2.50	110	106	103	108	105	102	105	102	100	94
3.00	111	108	105	110	107	104	106	104	102	95
4.00	114	111	108	112	109	107	108	106	104	97
5.00	115	113	111	113	111	109	109	107	106	98
ROOM INDEX	UF(total)									Direct
According to DIN EN 13032-2 2004			Suspended				SHRNOM = 1.25			

C Range: 0 - 360DEG
 C Interval: 22.5DEG
 Test Speed: HIGH
 Temperature:25.3DEG
 Operators:
 Test Date:2021-11-30

Range: 0 - 90DEG
 Interval: 1.0DEG
 Test System:EVERFINE GO-SPEX500_V1 SYSTEM V2.00.421
 Humidity:65.0%
 Test Distance:3.080m [K=1.0000]
 Remarks:

ISOCANDELA DIAGRAM

Test:U:119.95V I:0.0854A P:7.1878W PF:0.9080 Freq:59.98Hz Lamp Flux:429.523x1 lm		
NAME: LED-1-S7W-5CCT	TYPE:	WEIGHT:
SPEC.:2700K 90	DIM.:	SERIAL No.:
MFR.:	SUR.:	Shielding Angle:

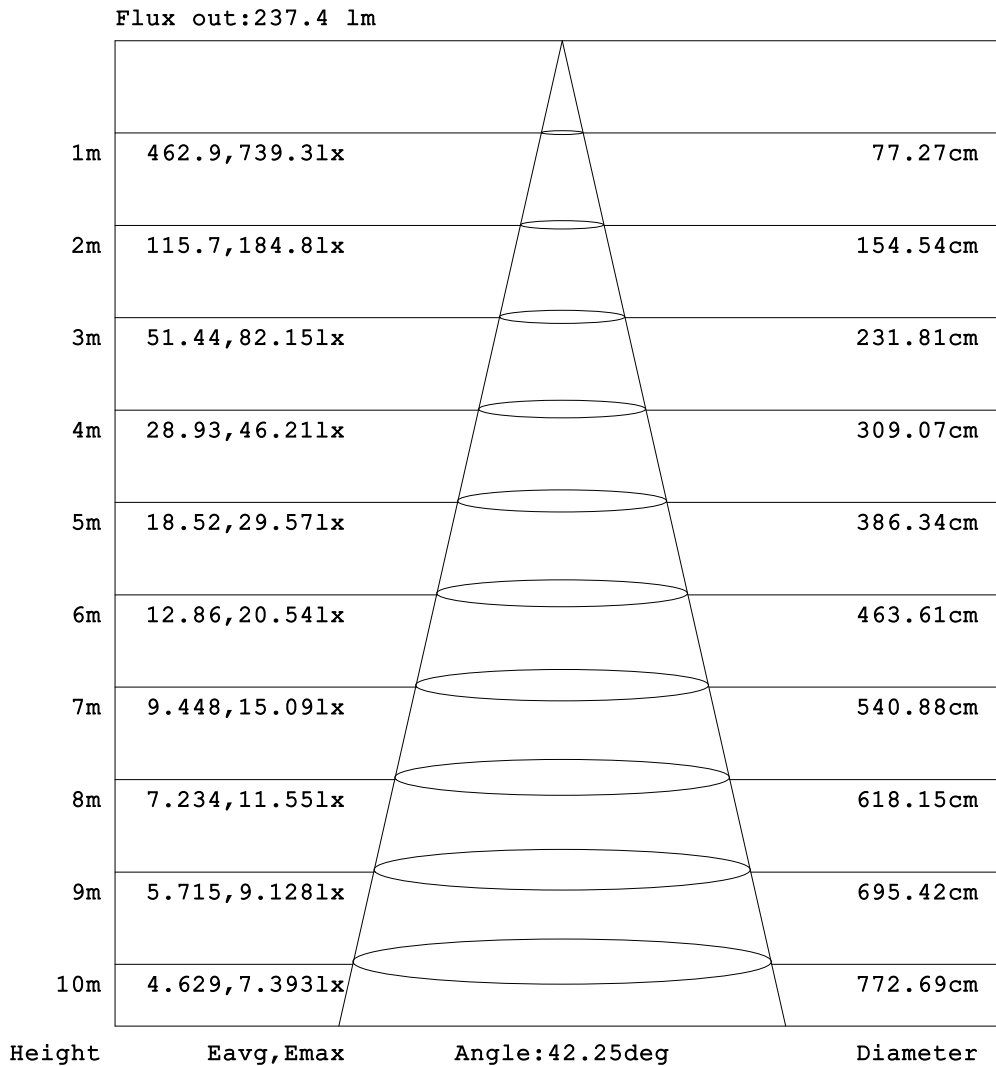


C Range: 0 - 360DEG
 C Interval: 22.5DEG
 Test Speed: HIGH
 Temperature:25.3DEG
 Operators:
 Test Date:2021-11-30

Range: 0 - 90DEG
 Interval: 1.0DEG
 Test System:EVERFINE GO-SPEX500_V1 SYSTEM V2.00.421
 Humidity:65.0%
 Test Distance:3.080m [K=1.0000]
 Remarks:

AAI Figure

Test:U:119.95V I:0.0854A P:7.1878W PF:0.9080 Freq:59.98Hz Lamp Flux:429.523x1 lm		
NAME: LED-1-S7W-5CCT	TYPE:	WEIGHT:
SPEC.:2700K 90	DIM.:	SERIAL No.:
MFR.:	SUR.:	Shielding Angle:



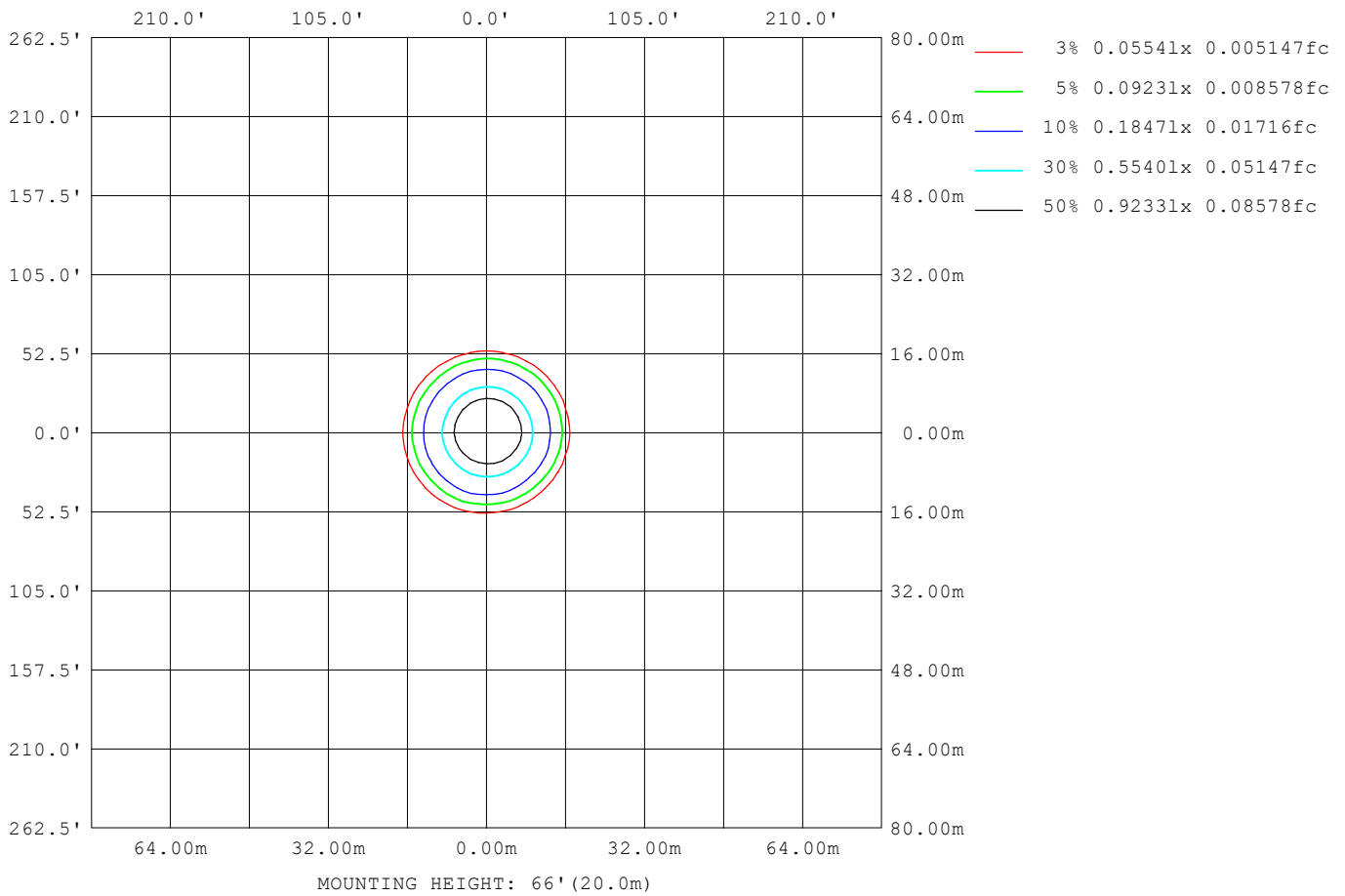
Note:The Curves indicate the illuminated area and the average illumination when the luminaire is at different distance.

C Range: 0 - 360DEG
 C Interval: 22.5DEG
 Test Speed: HIGH
 Temperature:25.3DEG
 Operators:
 Test Date:2021-11-30

Range: 0 - 90DEG
 Interval: 1.0DEG
 Test System:EVERFINE GO-SPEX500_V1 SYSTEM V2.00.421
 Humidity:65.0%
 Test Distance:3.080m [K=1.0000]
 Remarks:

ISOLUX DIAGRAM

Test:U:119.95V I:0.0854A P:7.1878W PF:0.9080 Freq:59.98Hz Lamp Flux:429.523x1 lm		
NAME: LED-1-S7W-5CCT	TYPE:	WEIGHT:
SPEC.:2700K 90	DIM.:	SERIAL No.:
MFR.:	SUR.:	Shielding Angle:



C Range: 0 - 360DEG
C Interval: 22.5DEG
Test Speed: HIGH
Temperature:25.3DEG
Operators:
Test Date:2021-11-30

Range: 0 - 90DEG
 Interval: 1.0DEG
Test System:EVERFINE GO-SPEX500_V1 SYSTEM V2.00.421
Humidity:65.0%
Test Distance:3.080m [K=1.0000]
Remarks:

LED Avg.L Report

Test:U:119.95V I:0.0854A P:7.1878W PF:0.9080 Freq:59.98Hz Lamp Flux:429.523x1 lm		
NAME: LED-1-S7W-5CCT	TYPE:	WEIGHT:
SPEC.:2700K 90	DIM.:	SERIAL No.:
MFR.:	SUR.:	Shielding Angle:

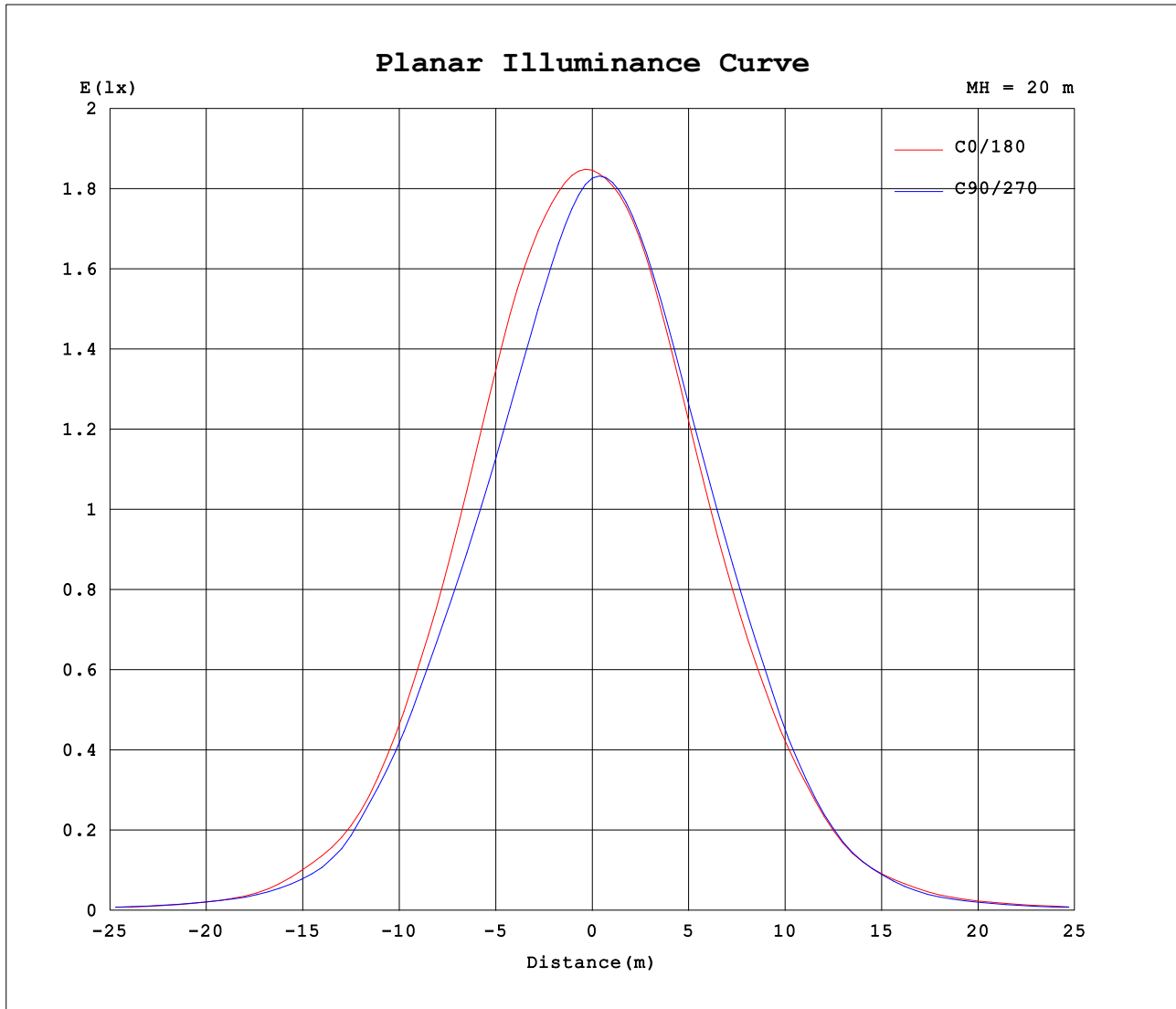
AvgL	cd/m2
L_0~180 (65) av	93
L_0~180 (75) av	71
L_0~180 (85) av	17
L_90~270 (65) av	91
L_90~270 (75) av	69
L_90~270 (85) av	1
L_45 (65) av	92
L_45 (75) av	70
L_45 (85) av	3

Standard: GB/T 29293-2012

C Range: 0 - 360DEG
 C Interval: 22.5DEG
 Test Speed: HIGH
 Temperature:25.3DEG
 Operators:
 Test Date:2021-11-30

Range: 0 - 90DEG
 Interval: 1.0DEG
 Test System:EVERFINE GO-SPEX500_V1 SYSTEM V2.00.421
 Humidity:65.0%
 Test Distance:3.080m [K=1.0000]
 Remarks:

Planar Illuminance Curve



C Range: 0 - 360DEG
 C Interval: 22.5DEG
 Test Speed: HIGH
 Temperature:25.3DEG
 Operators:
 Test Date:2021-11-30

Range: 0 - 90DEG
 Interval: 1.0DEG
 Test System:EVERFINE GO-SPEX500_V1 SYSTEM V2.00.421
 Humidity:65.0%
 Test Distance:3.080m [K=1.0000]
 Remarks:

LUMINOUS DISTRIBUTION INTENSITY DATA

Test:U:119.95V I:0.0854A P:7.1878W PF:0.9080 Freq:59.98Hz Lamp Flux:429.523x1 lm		
NAME: LED-1-S7W-5CCT	TYPE:	WEIGHT:
SPEC.:2700K 90	DIM.:	SERIAL No.:
MFR.:	SUR.:	Shielding Angle:

Table--1

UNIT: cd

C (DEG) \ □ (DEG)	0	22.5	45	67.5	90	112.5	135	157.5	180	202.5	225	247.5	270	292.5	315	337.5			
0	732	732	732	732	732	732	732	732	732	732	732	732	732	732	732	732			
5	718	706	690	680	674	678	685	696	704	709	710	711	716	721	727	726			
10	665	640	608	587	578	583	595	611	625	632	634	632	641	654	673	678			
15	561	537	505	485	476	475	482	496	506	510	518	520	533	549	570	576			
20	428	416	397	386	375	373	374	378	381	382	395	405	417	425	438	435			
25	298	294	283	275	269	267	264	268	268	264	273	283	294	300	302	301			
30	175	172	164	164	165	167	166	166	168	165	167	171	174	175	180	177			
35	98.6	91.6	82.2	78.9	78.3	81.7	84.3	87.4	88.3	87.4	85.9	86.8	89.5	93.6	98.3	100			
40	48.1	45.0	41.3	41.2	41.7	44.5	47.1	49.5	49.9	48.4	46.2	44.4	44.3	44.6	47.1	48.4			
45	24.0	23.9	23.3	23.7	24.3	25.8	26.7	27.1	26.9	26.4	25.5	24.3	23.6	23.0	23.5	24.0			
50	13.9	14.2	14.1	14.4	14.9	15.8	16.3	16.5	16.4	15.8	15.3	14.6	14.1	13.7	13.9	13.8			
55	9.50	9.58	9.59	9.70	9.88	10.2	10.5	10.7	10.6	10.4	10.3	9.85	9.62	9.46	9.52	9.43			
60	6.24	6.24	6.15	6.17	6.27	6.52	6.72	6.90	6.96	6.87	6.78	6.56	6.44	6.31	6.30	6.23			
65	4.03	4.02	4.01	4.09	4.20	4.39	4.54	4.64	4.67	4.60	4.55	4.41	4.36	4.26	4.19	4.08			
70	2.90	2.90	2.91	2.96	3.03	3.11	3.17	3.21	3.20	3.13	3.07	2.99	2.97	2.92	2.93	2.90			
75	1.93	1.94	1.93	1.97	2.01	2.07	2.10	2.14	2.13	2.08	2.03	1.97	1.96	1.93	1.94	1.93			
80	1.12	1.12	1.11	1.00	0.94	0.98	1.16	1.24	1.23	1.20	0.97	0.76	0.72	0.77	0.97	1.11			
85	0.11	0.36	0.08	0.01	0.01	0.01	0.03	0.36	0.21	0.25	0.00	0.02	0.01	0.01	0.01	0.26			
90	0.00	0.00	0.00	0.00	0.00	0.00	0.00	0.00	0.00	0.00	0.00	0.01	0.00	0.00	0.00	0.00			

C Range: 0 - 360DEG
 C Interval: 22.5DEG
 Test Speed: HIGH
 Temperature:25.3DEG
 Operators:
 Test Date:2021-11-30

□ Range: 0 - 90DEG
 □ Interval: 1.0DEG
 Test System:EVERFINE GO-SPEX500_V1 SYSTEM V2.00.421
 Humidity:65.0%
 Test Distance:3.080m [K=1.0000]
 Remarks: