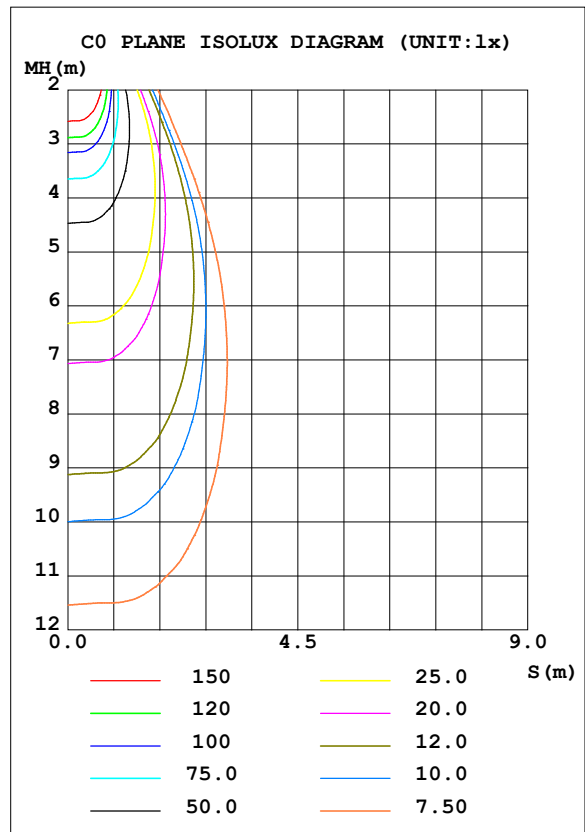
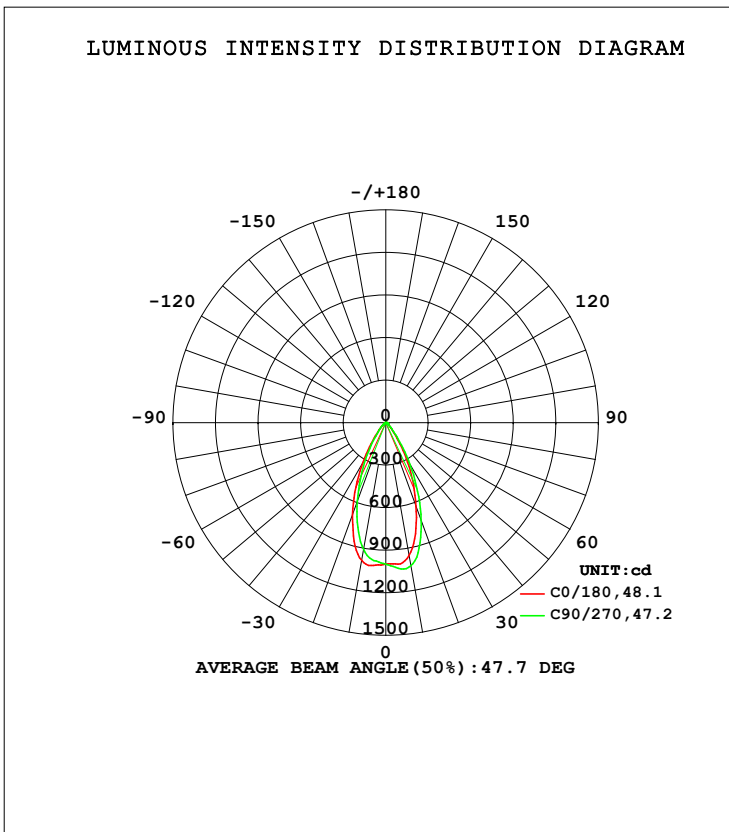


LUMINAIRE PHOTOMETRIC TEST REPORT

Test:U:120.06V I:0.0821A P:9.0161W PF:0.9087 Freq:59.98Hz Lamp Flux:736.956x1 lm		
NAME: LBL-JB10W-5CCT	TYPE:	WEIGHT:
SPEC.:4000K 90	DIM.:	SERIAL No.:
MFR.:	SUR.:	Shielding Angle:

DATA OF LAMP		PHOTOMETRIC DATA Eff: 81.74 lm/W			
MODEL	LBL-JB10W-5CCT	Imax (cd)	1043	S/MH (C0/180)	0.77
NOMINAL POWER (W)	9	LOR (%)	100.0	S/MH (C90/270)	0.72
RATED VOLTAGE (V)	120	TOTAL FLUX (lm)	736.96	<input type="checkbox"/> UP, DN (C0-180)	0.0, 53.1
NOMINAL FLUX (lm)	736.956	CIE CLASS	DIRECT	<input type="checkbox"/> UP, DN (C180-360)	0.0, 46.9
LAMPS INSIDE	1	<input type="checkbox"/> up (%)	0.0	CIBSE SHR NOM	0.75
TEST VOLTAGE (V)	120	<input type="checkbox"/> down (%)	100.0	CIBSE SHR MAX	0.75



C Range: 0 - 360DEG
 C Interval: 22.5DEG
 Test Speed: HIGH
 Temperature: 25.3DEG
 Operators:
 Test Date: 2022-6-10

Range: 0 - 90DEG
 Interval: 1.0DEG
 Test System: EVERFINE GO-SPEX500_V1 SYSTEM V2.00.421
 Humidity: 65.0%
 Test Distance: 3.080m [K=1.0000]
 Remarks:

ZONAL FLUX DIAGRAM

ZONAL FLUX DIAGRAM:

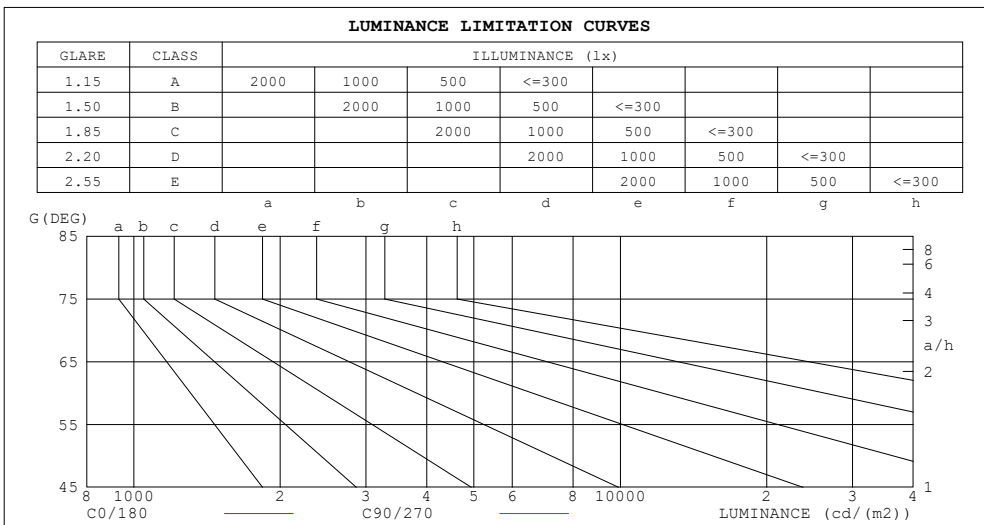
mm	C0	C45	C90	C135	C180	C225	C270	C315	mm	□ zone	□ total	%lum, lamp
10	949.4	1001	1025	1023	985.5	939.4	908.5	912.6	0- 10	94.98	94.98	12.9,12.9
20	625.5	684.5	731.6	739.2	687.1	622.6	588.9	596.7	10- 20	230.8	325.7	44.2,44.2
30	289.4	323.9	345.2	360.4	323.2	282.6	266.4	255.1	20- 30	215.8	541.6	73.5,73.5
40	83.09	95.12	97.26	108.3	94.49	85.33	83.37	80.67	30- 40	111.3	652.9	88.6,88.6
50	32.49	35.18	35.19	36.04	33.80	31.72	31.31	31.22	40- 50	43.07	695.9	94.4,94.4
60	16.84	18.06	15.93	15.85	14.82	14.55	14.33	15.11	50- 60	20.25	716.2	97.2,97.2
70	10.36	10.99	9.267	9.335	9.368	9.386	8.955	9.431	60- 70	12.33	728.5	98.9,98.9
80	4.924	4.433	3.634	3.622	4.274	4.055	3.965	4.387	70- 80	7.068	735.6	99.8,99.8
90	0.0214	0.0157	0.0200	0.0163	0.0347	0.0281	0.0304	0.0294	80- 90	1.382	737.0	100,100
100									90-100			
110									100-110			
120									110-120			
130									120-130			
140									130-140			
150									140-150			
160									150-160			
170									160-170			
180									170-180			
DEG	LUMINOUS INTENSITY:cd									UNIT:lm		

C Range: 0 - 360DEG
 C Interval: 22.5DEG
 Test Speed: HIGH
 Temperature:25.3DEG
 Operators:
 Test Date:2022-6-10

□ Range: 0 - 90DEG
 □ Interval: 1.0DEG
 Test System:EVERFINE GO-SPEX500_V1 SYSTEM V2.00.421
 Humidity:65.0%
 Test Distance:3.080m [K=1.0000]
 Remarks:

LUMINANCE LIMITATION CURVES

Test:U:120.06V I:0.0821A P:9.0161W PF:0.9087 Freq:59.98Hz Lamp Flux:736.956x1 lm		
NAME: LBL-JB10W-5CCT	TYPE:	WEIGHT:
SPEC.:4000K 90	DIM.:	SERIAL No.:
MFR.:	SUR.:	Shielding Angle:



LUMINANCE cd/(m2)		
G (DEG)	C0/180	C90/270
85	40	12
80	255	188
75	262	212
70	273	244
65	277	268
60	303	287
55	357	352
50	455	493
45	637	727

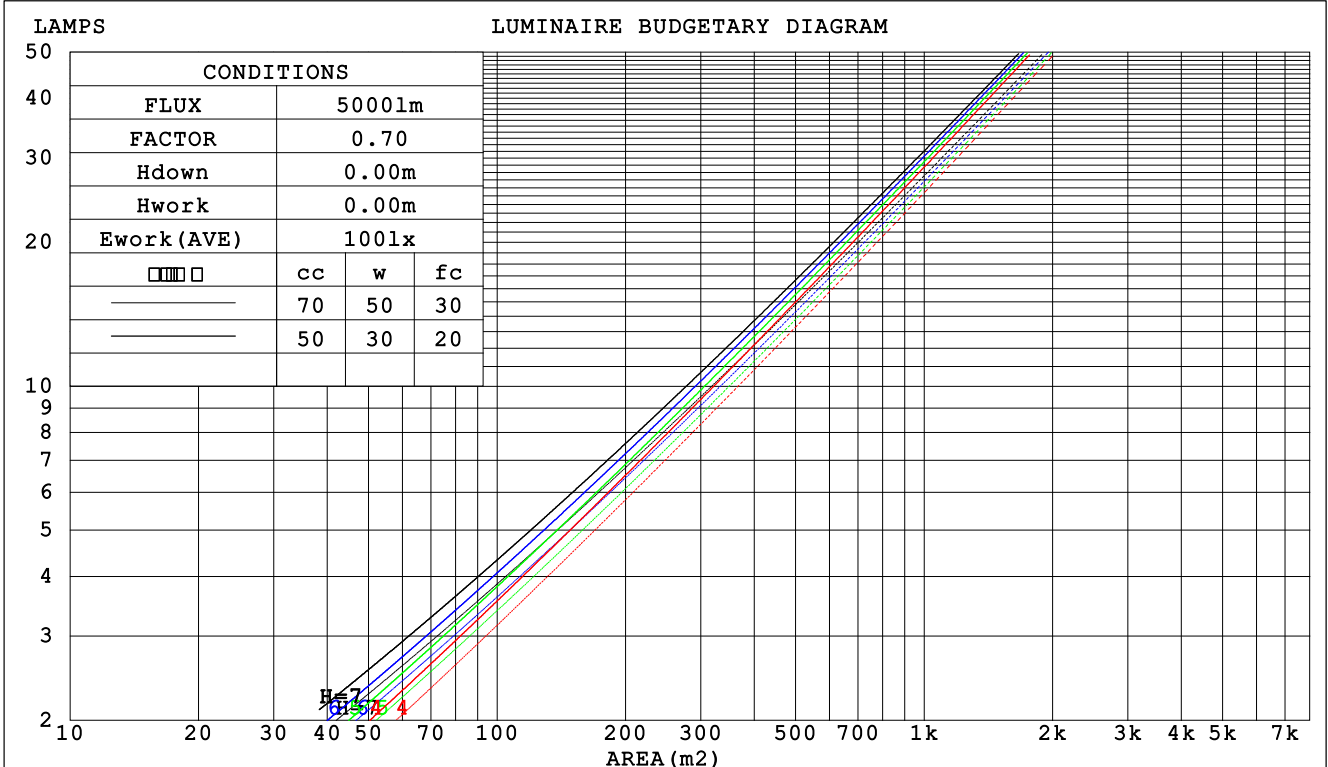
C Range: 0 - 360DEG
 C Interval: 22.5DEG
 Test Speed: HIGH
 Temperature:25.3DEG
 Operators:
 Test Date:2022-6-10

Range: 0 - 90DEG
 Interval: 1.0DEG
 Test System:EVERFINE GO-SPEX500_V1 SYSTEM V2.00.421
 Humidity:65.0%
 Test Distance:3.080m [K=1.0000]
 Remarks:

CU AND LUMINAIRE BUDGETARY ESTIMATE DIAGRAM

Test:U:120.06V I:0.0821A P:9.0161W PF:0.9087 Freq:59.98Hz Lamp Flux:736.956x1 lm		
NAME: LBL-JB10W-5CCT	TYPE:	WEIGHT:
SPEC.:4000K 90	DIM.:	SERIAL No.:
MFR.:	SUR.:	Shielding Angle:

□cc	80%			70%			50%			30%			10%			0
□w	50%	30%	10%	50%	30%	10%	50%	30%	10%	50%	30%	10%	50%	30%	10%	0
□fc	20%			20%			20%			20%			20%			0
RCR	RCR:Room Cavity Ratio						Coefficients of Utilization(CU)									
0.0	1.19	1.19	1.19	1.16	1.16	1.16	1.11	1.11	1.11	1.06	1.06	1.06	1.02	1.02	1.02	1.00
1.0	1.10	1.08	1.06	1.08	1.06	1.04	1.04	1.02	1.01	1.00	.99	.98	.97	.96	.95	.93
2.0	1.03	.98	.95	1.01	.97	.94	.98	.95	.92	.95	.92	.90	.92	.90	.88	.86
3.0	.96	.91	.87	.94	.90	.86	.92	.88	.84	.89	.86	.83	.87	.84	.82	.80
4.0	.89	.84	.80	.88	.83	.79	.86	.82	.78	.84	.80	.77	.82	.79	.76	.75
5.0	.84	.78	.74	.83	.78	.74	.81	.76	.73	.80	.75	.72	.78	.74	.72	.70
6.0	.79	.73	.69	.78	.73	.69	.77	.72	.68	.75	.71	.68	.74	.70	.67	.66
7.0	.75	.69	.64	.74	.68	.64	.73	.68	.64	.71	.67	.64	.70	.66	.63	.62
8.0	.71	.65	.61	.70	.64	.61	.69	.64	.60	.68	.63	.60	.67	.63	.60	.58
9.0	.67	.61	.57	.66	.61	.57	.66	.60	.57	.65	.60	.57	.64	.60	.57	.55
10.0	.64	.58	.54	.63	.58	.54	.62	.57	.54	.62	.57	.54	.61	.57	.54	.52



C Range: 0 - 360DEG
 C Interval: 22.5DEG
 Test Speed: HIGH
 Temperature:25.3DEG
 Operators:
 Test Date:2022-6-10

□ Range: 0 - 90DEG
 □ Interval: 1.0DEG
 Test System:EVERFINE GO-SPEX500_V1 SYSTEM V2.00.421
 Humidity:65.0%
 Test Distance:3.080m [K=1.0000]
 Remarks:

WEC AND CCEC

Test:U:120.06V I:0.0821A P:9.0161W PF:0.9087 Freq:59.98Hz Lamp Flux:736.956x1 lm		
NAME: LBL-JB10W-5CCT	TYPE:	WEIGHT:
SPEC.:4000K 90	DIM.:	SERIAL No.:
MFR.:	SUR.:	Shielding Angle:

<input type="checkbox"/> cc	80%	70%	50%	30%	10%	0
<input type="checkbox"/> w	50% 30% 10%	50% 30% 10%	50% 30% 10%	50% 30% 10%	50% 30% 10%	0
<input type="checkbox"/> fc	20%	20%	20%	20%	20%	0
RCR	RCR:Room Cavity Ratio		Wall Exitance Coefficients (WEC)			
0.0						
1.0	.184 .105 .033	.178 .101 .032	.165 .095 .030	.153 .088 .028	.143 .083 .027	
2.0	.175 .096 .029	.170 .093 .029	.159 .088 .027	.149 .084 .026	.140 .079 .025	
3.0	.166 .088 .026	.161 .086 .026	.152 .082 .025	.143 .079 .024	.136 .075 .023	
4.0	.157 .081 .024	.153 .080 .024	.145 .077 .023	.137 .074 .022	.131 .071 .022	
5.0	.148 .076 .022	.145 .074 .022	.138 .072 .021	.132 .069 .021	.126 .067 .020	
6.0	.141 .071 .020	.138 .070 .020	.132 .068 .020	.126 .066 .019	.121 .064 .019	
7.0	.134 .066 .019	.131 .065 .019	.126 .064 .018	.121 .062 .018	.116 .060 .018	
8.0	.128 .062 .018	.125 .062 .017	.121 .060 .017	.116 .059 .017	.112 .057 .017	
9.0	.122 .059 .016	.120 .058 .016	.116 .057 .016	.112 .056 .016	.108 .055 .016	
10.0	.117 .056 .016	.115 .055 .015	.111 .054 .015	.107 .053 .015	.104 .052 .015	

<input type="checkbox"/> cc	80%	70%	50%	30%	10%	0
<input type="checkbox"/> w	50% 30% 10%	50% 30% 10%	50% 30% 10%	50% 30% 10%	50% 30% 10%	0
<input type="checkbox"/> fc	20%	20%	20%	20%	20%	0
RCR	RCR:Room Cavity Ratio		Ceiling Cavity Exitance Coefficients (CCEC)			
0.0	.190 .190 .190	.163 .163 .163	.111 .111 .111	.064 .064 .064	.020 .020 .020	
1.0	.172 .157 .144	.147 .135 .124	.100 .093 .086	.058 .054 .050	.019 .017 .016	
2.0	.157 .132 .112	.134 .114 .097	.092 .079 .068	.053 .046 .040	.017 .015 .013	
3.0	.144 .114 .089	.124 .098 .077	.085 .068 .054	.049 .040 .032	.016 .013 .010	
4.0	.134 .099 .072	.115 .085 .063	.079 .060 .044	.046 .035 .026	.015 .011 .009	
5.0	.125 .087 .059	.108 .076 .052	.074 .053 .036	.043 .031 .022	.014 .010 .007	
6.0	.118 .078 .050	.101 .068 .043	.070 .047 .031	.040 .028 .018	.013 .009 .006	
7.0	.111 .070 .042	.095 .061 .037	.066 .043 .026	.038 .025 .015	.012 .008 .005	
8.0	.105 .064 .036	.090 .056 .031	.063 .039 .022	.036 .023 .013	.012 .008 .004	
9.0	.100 .059 .031	.086 .051 .027	.060 .036 .019	.035 .021 .012	.011 .007 .004	
10.0	.095 .055 .027	.082 .047 .024	.057 .033 .017	.033 .020 .010	.011 .006 .003	

C Range: 0 - 360DEG
 C Interval: 22.5DEG
 Test Speed: HIGH
 Temperature:25.3DEG
 Operators:
 Test Date:2022-6-10

Range: 0 - 90DEG
 Interval: 1.0DEG
 Test System:EVERFINE GO-SPEX500_V1 SYSTEM V2.00.421
 Humidity:65.0%
 Test Distance:3.080m [K=1.0000]
 Remarks:

UGR(Unified Glare Rating) Table

Test:U:120.06V I:0.0821A P:9.0161W PF:0.9087 Freq:59.98Hz Lamp Flux:736.956x1 lm										
NAME: LBL-JB10W-5CCT					TYPE:			WEIGHT:		
SPEC.:4000K 90					DIM.:			SERIAL No.:		
MFR.:					SUR.:			Shielding Angle:		
ceiling/cavity	0.7	0.7	0.5	0.5	0.3	0.7	0.7	0.5	0.5	0.3
walls	0.5	0.3	0.5	0.3	0.3	0.5	0.3	0.5	0.3	0.3
working plane	0.2	0.2	0.2	0.2	0.2	0.2	0.2	0.2	0.2	0.2
Room dimensions	Viewed crosswise					Viewed endwise				
x = 2H y = 2H	7.5	8.5	7.8	8.7	8.8	7.9	8.8	8.1	9.0	9.2
3H	8.0	8.8	8.2	9.0	9.3	8.2	9.0	8.4	9.2	9.4
4H	8.2	9.0	8.5	9.3	9.5	8.3	9.1	8.6	9.3	9.6
6H	8.4	9.2	8.7	9.4	9.7	8.4	9.2	8.7	9.4	9.7
8H	8.4	9.2	8.7	9.4	9.7	8.4	9.2	8.7	9.4	9.7
12H	8.4	9.1	8.7	9.4	9.7	8.4	9.1	8.7	9.3	9.6
4H 2H	7.6	8.5	7.9	8.7	8.9	7.9	8.7	8.2	9.0	9.2
3H	8.2	9.0	8.6	9.2	9.5	8.4	9.1	8.7	9.4	9.6
4H	8.6	9.3	8.9	9.5	9.9	8.6	9.3	8.9	9.6	9.9
6H	8.9	9.5	9.3	9.8	10.2	8.8	9.4	9.2	9.7	10.0
8H	9.0	9.5	9.4	9.9	10.2	8.8	9.3	9.2	9.7	10.1
12H	8.9	9.4	9.3	9.8	10.2	8.8	9.3	9.2	9.6	10.0
8H 4H	8.7	9.2	9.1	9.6	9.9	8.7	9.2	9.1	9.6	9.9
6H	9.1	9.5	9.5	9.9	10.4	8.9	9.4	9.4	9.8	10.2
8H	9.2	9.6	9.6	10.0	10.5	9.0	9.4	9.4	9.8	10.3
12H	9.2	9.5	9.7	10.0	10.4	9.0	9.3	9.4	9.7	10.2
12H 4H	8.6	9.1	9.1	9.5	9.9	8.7	9.1	9.1	9.5	9.9
6H	9.1	9.5	9.6	9.9	10.4	9.0	9.3	9.4	9.8	10.2
8H	9.2	9.6	9.7	10.0	10.5	9.0	9.4	9.5	9.8	10.3
Variations with the observer position at spacings:										
S = 1.0H	+ 1.0 / - 1.3					+ 1.6 / - 1.7				
1.5H	+ 1.8 / - 1.0					+ 2.8 / - 1.4				
2.0H	+ 1.3 / - 0.7					+ 2.0 / - 1.0				

CIE Pub.117, 737.0 lm Total Lamp Luminous Flux Correct (8log(F/F0) = -1.1)
 Area: 0.111111 m2

C Range: 0 - 360DEG
 C Interval: 22.5DEG
 Test Speed: HIGH
 Temperature:25.3DEG
 Operators:
 Test Date:2022-6-10

Range: 0 - 90DEG
 Interval: 1.0DEG
 Test System:EVERFINE GO-SPEX500_V1 SYSTEM V2.00.421
 Humidity:65.0%
 Test Distance:3.080m [K=1.0000]
 Remarks:

UTILIZATION FACTORS TABLE

Test:U:120.06V I:0.0821A P:9.0161W PF:0.9087 Freq:59.98Hz Lamp Flux:736.956x1 lm		
NAME: LBL-JB10W-5CCT	TYPE:	WEIGHT:
SPEC.:4000K 90	DIM.:	SERIAL No.:
MFR.:	SUR.:	Shielding Angle:

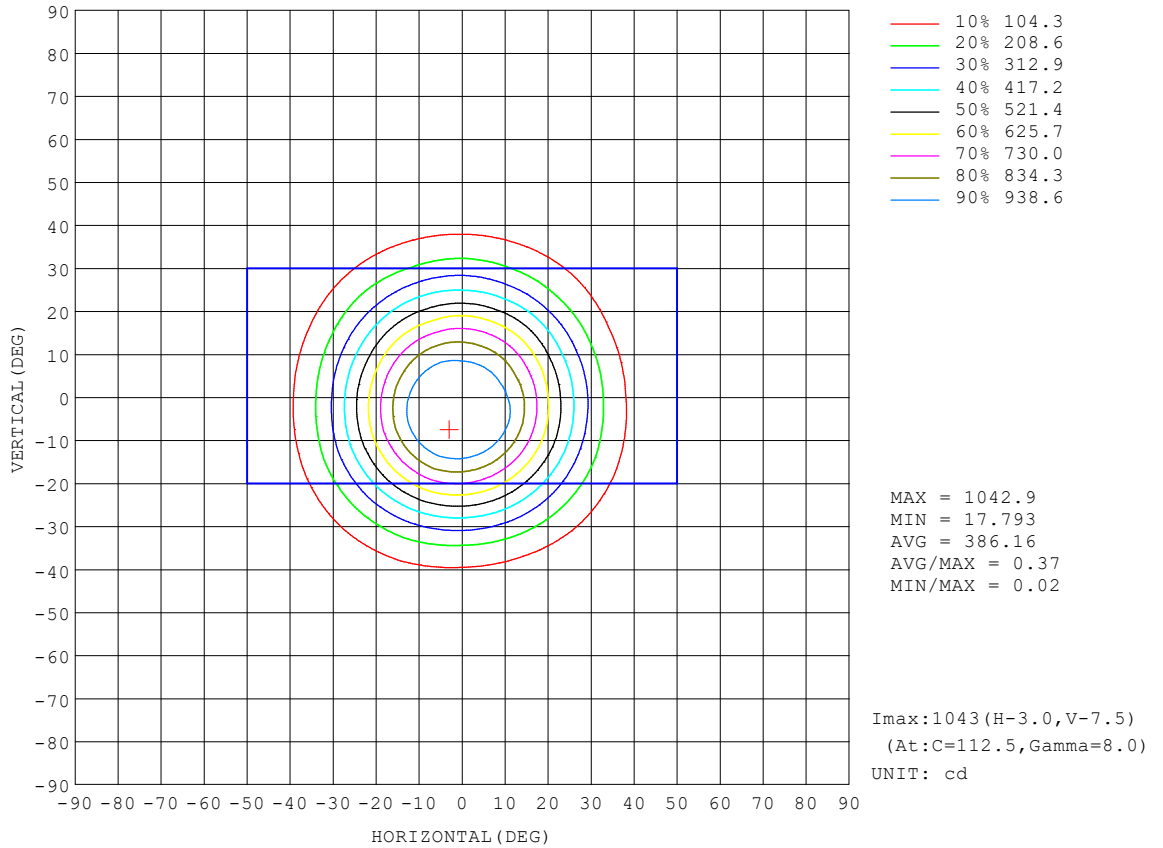
REFLECTANCE										
Ceiling	0.8	0.8	0.8	0.7	0.7	0.7	0.5	0.5	0.5	0
Walls	0.7	0.5	0.3	0.7	0.5	0.3	0.7	0.5	0.3	0
Working plane	0.2	0.2	0.2	0.2	0.2	0.2	0.2	0.2	0.2	0
ROOM INDEX	UTILIZATION FACTORS (PERCENT) $k(RI) \times RCR = 5$									
k = 0.60	84	78	74	84	77	73	83	77	73	69
0.80	92	86	82	91	85	82	90	85	81	77
1.00	97	91	87	96	90	87	94	90	86	82
1.25	101	96	92	100	95	91	98	94	91	86
1.50	104	99	95	103	98	95	101	97	94	89
2.00	107	103	99	106	102	98	103	100	97	92
2.50	109	105	102	108	104	101	104	101	99	93
3.00	111	107	104	109	106	103	106	103	101	94
4.00	113	110	108	111	108	106	107	105	104	96
5.00	114	112	110	112	110	108	108	107	105	98
ROOM INDEX	UF(total)									Direct
According to DIN EN 13032-2 2004			Suspended				SHRNOM = 1.25			

C Range: 0 - 360DEG
 C Interval: 22.5DEG
 Test Speed: HIGH
 Temperature:25.3DEG
 Operators:
 Test Date:2022-6-10

Range: 0 - 90DEG
 Interval: 1.0DEG
 Test System:EVERFINE GO-SPEX500_V1 SYSTEM V2.00.421
 Humidity:65.0%
 Test Distance:3.080m [K=1.0000]
 Remarks:

ISOCANDELA DIAGRAM

Test:U:120.06V I:0.0821A P:9.0161W PF:0.9087 Freq:59.98Hz Lamp Flux:736.956x1 lm		
NAME: LBL-JB10W-5CCT	TYPE:	WEIGHT:
SPEC.:4000K 90	DIM.:	SERIAL No.:
MFR.:	SUR.:	Shielding Angle:

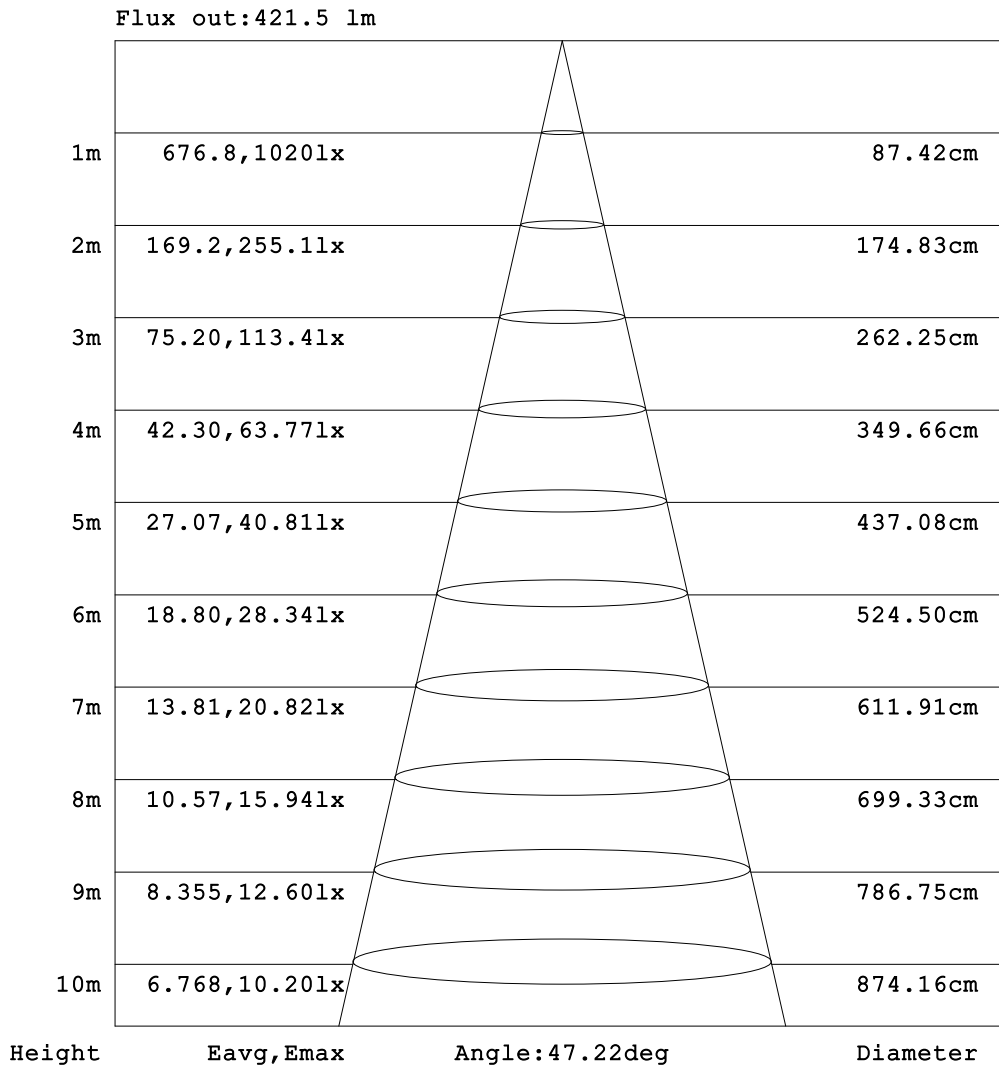


C Range: 0 - 360DEG
 C Interval: 22.5DEG
 Test Speed: HIGH
 Temperature:25.3DEG
 Operators:
 Test Date:2022-6-10

Range: 0 - 90DEG
 Interval: 1.0DEG
 Test System:EVERFINE GO-SPEX500_V1 SYSTEM V2.00.421
 Humidity:65.0%
 Test Distance:3.080m [K=1.0000]
 Remarks:

AAI Figure

Test:U:120.06V I:0.0821A P:9.0161W PF:0.9087 Freq:59.98Hz Lamp Flux:736.956x1 lm		
NAME: LBL-JB10W-5CCT	TYPE:	WEIGHT:
SPEC.:4000K 90	DIM.:	SERIAL No.:
MFR.:	SUR.:	Shielding Angle:



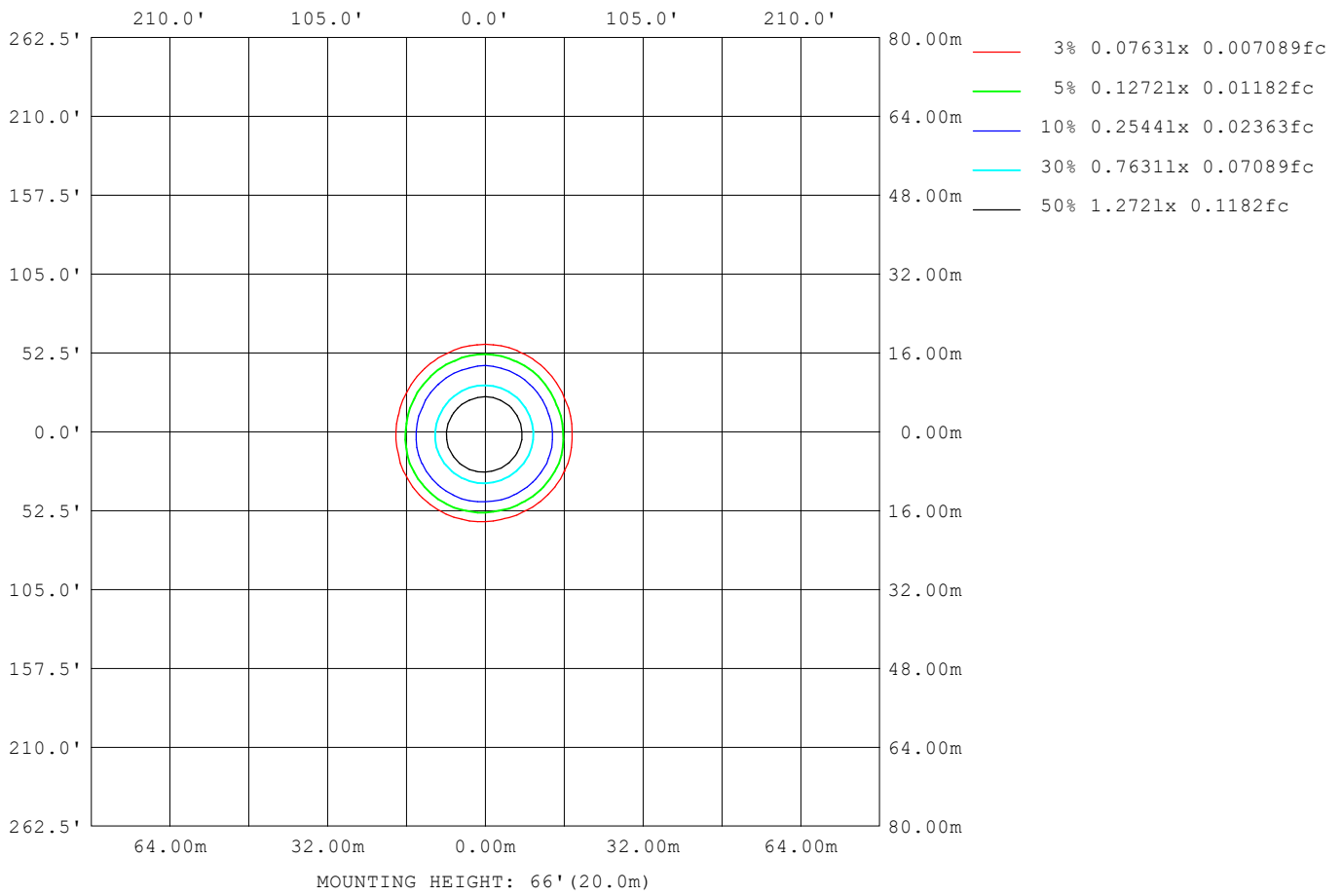
Note:The Curves indicate the illuminated area and the average illumination when the luminaire is at different distance.

C Range: 0 - 360DEG
 C Interval: 22.5DEG
 Test Speed: HIGH
 Temperature:25.3DEG
 Operators:
 Test Date:2022-6-10

Range: 0 - 90DEG
 Interval: 1.0DEG
 Test System:EVERFINE GO-SPEX500_V1 SYSTEM V2.00.421
 Humidity:65.0%
 Test Distance:3.080m [K=1.0000]
 Remarks:

ISOLUX DIAGRAM

Test:U:120.06V I:0.0821A P:9.0161W PF:0.9087 Freq:59.98Hz Lamp Flux:736.956x1 lm		
NAME: LBL-JB10W-5CCT	TYPE:	WEIGHT:
SPEC.:4000K 90	DIM.:	SERIAL No.:
MFR.:	SUR.:	Shielding Angle:



C Range: 0 - 360DEG
C Interval: 22.5DEG
Test Speed: HIGH
Temperature:25.3DEG
Operators:
Test Date:2022-6-10

Range: 0 - 90DEG
 Interval: 1.0DEG
Test System:EVERFINE GO-SPEX500_V1 SYSTEM V2.00.421
Humidity:65.0%
Test Distance:3.080m [K=1.0000]
Remarks:

LED Avg.L Report

Test:U:120.06V I:0.0821A P:9.0161W PF:0.9087 Freq:59.98Hz Lamp Flux:736.956x1 lm		
NAME: LBL-JB10W-5CCT	TYPE:	WEIGHT:
SPEC.:4000K 90	DIM.:	SERIAL No.:
MFR.:	SUR.:	Shielding Angle:

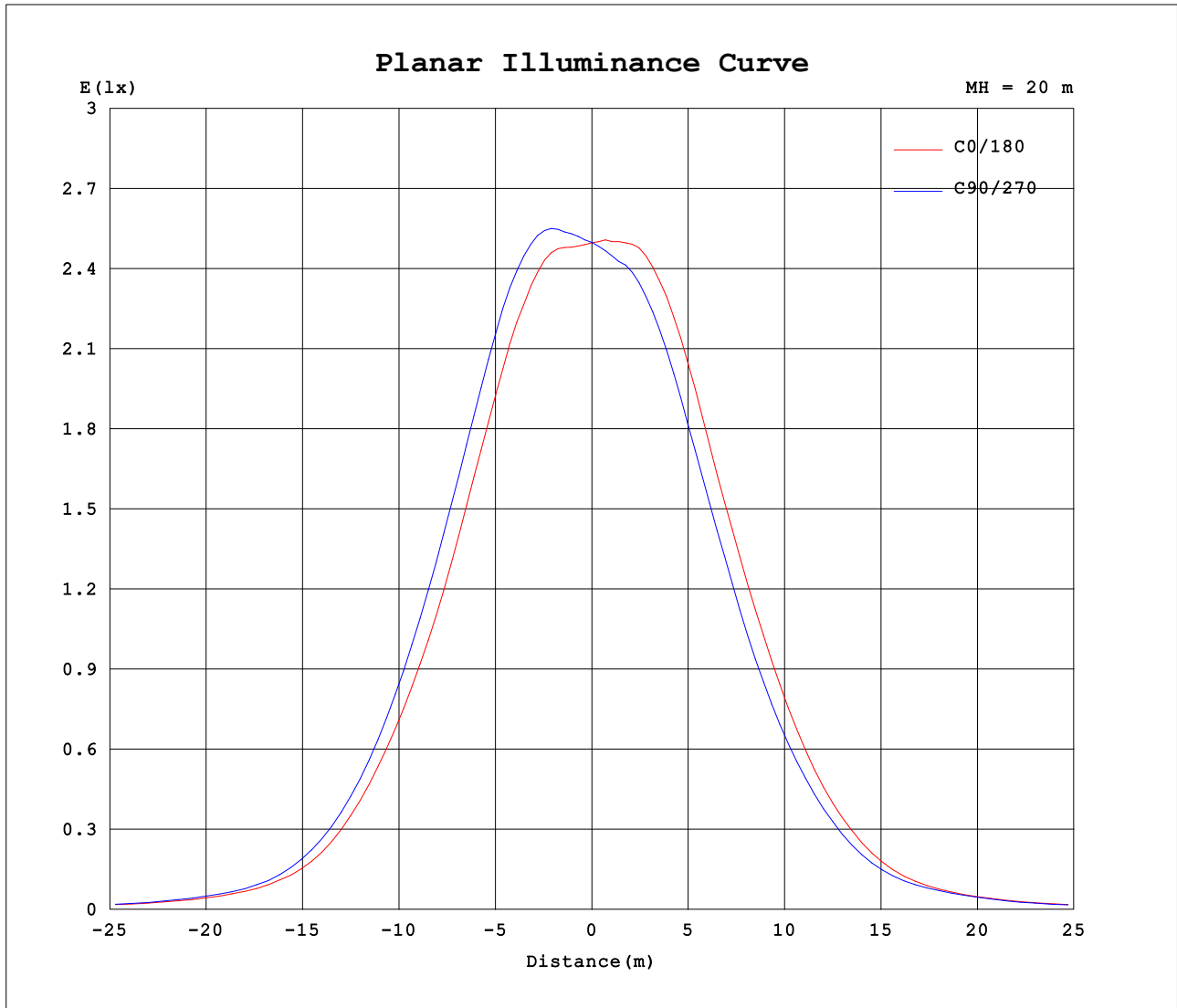
AvgL	cd/m2
L_0~180 (65) av	267
L_0~180 (75) av	246
L_0~180 (85) av	42
L_90~270 (65) av	257
L_90~270 (75) av	216
L_90~270 (85) av	13
L_45 (65) av	272
L_45 (75) av	231
L_45 (85) av	41

Standard: GB/T 29293-2012

C Range: 0 - 360DEG
 C Interval: 22.5DEG
 Test Speed: HIGH
 Temperature:25.3DEG
 Operators:
 Test Date:2022-6-10

Range: 0 - 90DEG
 Interval: 1.0DEG
 Test System:EVERFINE GO-SPEX500_V1 SYSTEM V2.00.421
 Humidity:65.0%
 Test Distance:3.080m [K=1.0000]
 Remarks:

Planar Illuminance Curve



C Range: 0 - 360DEG
 C Interval: 22.5DEG
 Test Speed: HIGH
 Temperature: 25.3DEG
 Operators:
 Test Date: 2022-6-10

Range: 0 - 90DEG
 Interval: 1.0DEG
 Test System: EVERFINE GO-SPEX500_V1 SYSTEM V2.00.421
 Humidity: 65.0%
 Test Distance: 3.080m [K=1.0000]
 Remarks:

LUMINOUS DISTRIBUTION INTENSITY DATA

Test:U:120.06V I:0.0821A P:9.0161W PF:0.9087 Freq:59.98Hz Lamp Flux:736.956x1 lm		
NAME: LBL-JB10W-5CCT	TYPE:	WEIGHT:
SPEC.:4000K 90	DIM.:	SERIAL No.:
MFR.:	SUR.:	Shielding Angle:

Table--1

UNIT: cd

C (DEG) \ □ (DEG)	0	22.5	45	67.5	90	112.5	135	157.5	180	202.5	225	247.5	270	292.5	315	337.5			
0	999	999	999	999	999	999	999	999	999	999	999	999	999	999	999	999			
5	1002	1012	1021	1027	1031	1028	1023	1018	1011	1002	994	983	977	978	981	991			
10	949	982	1001	1014	1025	1031	1023	1014	986	961	939	922	908	907	913	926			
15	811	844	871	895	915	928	922	902	866	827	800	773	764	761	771	782			
20	626	658	685	708	732	747	739	723	687	649	623	592	589	586	597	607			
25	448	474	495	516	533	547	546	532	501	466	444	426	414	410	419	425			
30	289	308	324	335	345	357	360	353	323	301	283	268	266	256	255	268			
35	157	180	184	188	193	209	210	207	182	167	162	149	150	145	141	142			
40	83.1	92.2	95.1	93.4	97.3	107	108	105	94.5	89.1	85.3	84.1	83.4	81.8	80.7	78.0			
45	50.1	52.6	54.0	53.8	57.1	60.4	60.2	59.1	54.8	53.3	52.6	50.3	52.3	50.7	49.6	49.2			
50	32.5	33.5	35.2	34.2	35.2	35.5	36.0	36.2	33.8	31.9	31.7	31.2	31.3	30.5	31.2	31.4			
55	22.7	23.7	25.0	22.3	22.4	21.9	23.7	23.8	21.6	20.0	20.1	20.0	20.5	20.5	21.3	22.2			
60	16.8	17.7	18.1	16.4	15.9	15.8	15.8	15.9	14.8	14.2	14.6	14.1	14.3	14.5	15.1	16.0			
65	13.0	13.4	14.5	12.9	12.6	12.3	12.4	12.6	12.1	11.5	12.1	11.5	11.6	11.7	12.0	12.5			
70	10.4	10.5	11.0	9.49	9.27	8.99	9.33	9.75	9.37	8.89	9.39	8.95	8.96	9.11	9.43	9.91			
75	7.53	7.46	7.26	6.34	6.10	5.89	6.15	6.72	6.64	6.25	6.46	6.32	6.31	6.48	6.73	7.15			
80	4.92	4.61	4.43	3.86	3.63	3.51	3.62	4.03	4.27	4.02	4.05	3.96	3.97	4.11	4.39	4.70			
85	0.39	1.39	0.36	0.13	0.12	0.11	0.20	1.07	0.43	1.57	0.50	0.14	0.14	0.16	0.52	2.12			
90	0.02	0.02	0.02	0.02	0.02	0.02	0.02	0.02	0.03	0.03	0.03	0.03	0.03	0.03	0.03	0.03			

C Range: 0 - 360DEG
 C Interval: 22.5DEG
 Test Speed: HIGH
 Temperature:25.3DEG
 Operators:
 Test Date:2022-6-10

□ Range: 0 - 90DEG
 □ Interval: 1.0DEG
 Test System:EVERFINE GO-SPEX500_V1 SYSTEM V2.00.421
 Humidity:65.0%
 Test Distance:3.080m [K=1.0000]
 Remarks: