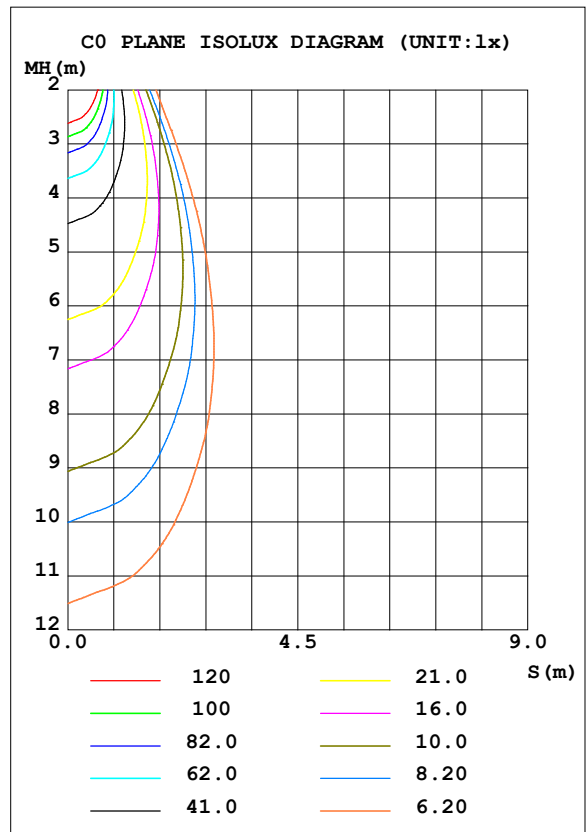
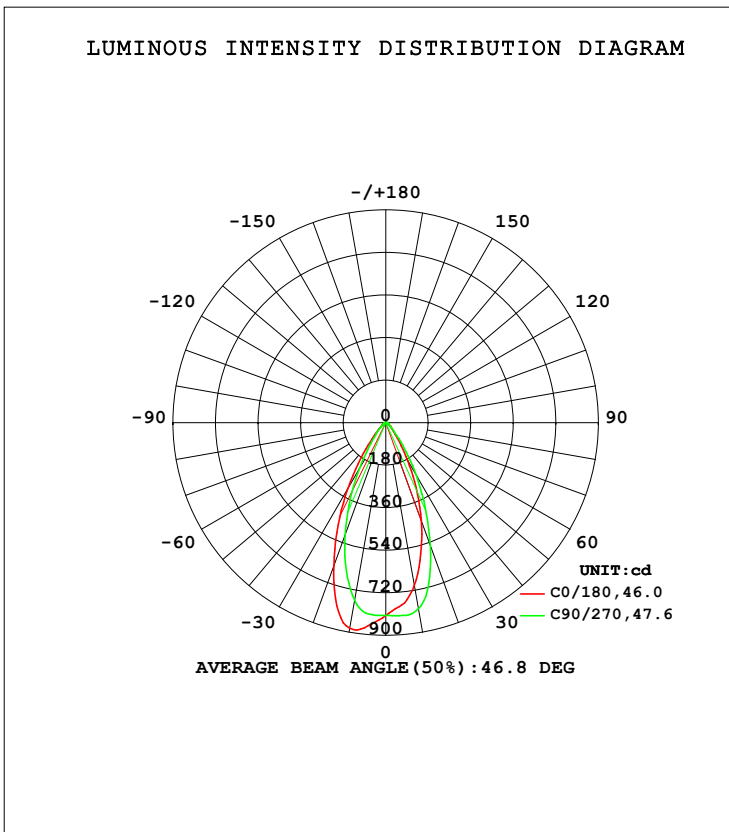


LUMINAIRE PHOTOMETRIC TEST REPORT

Test:U:120.05V I:0.0831A P:9.1470W PF:0.9090 Freq:59.98Hz Lamp Flux:598.369x1 lm		
NAME: LBL-JB10W-5CCT	TYPE:	WEIGHT:
SPEC.:2700K 90	DIM.:	SERIAL No.:
MFR.:	SUR.:	Shielding Angle:

DATA OF LAMP		PHOTOMETRIC DATA Eff: 65.42 lm/W			
MODEL	LBL-JB10W-5CCT	Imax (cd)	886.2	S/MH (C0/180)	0.82
NOMINAL POWER (W)	9	LOR (%)	100.0	S/MH (C90/270)	0.73
RATED VOLTAGE (V)	120	TOTAL FLUX (lm)	598.37	<input type="checkbox"/> UP, DN (C0-180)	0.0, 50.3
NOMINAL FLUX (lm)	598.369	CIE CLASS	DIRECT	<input type="checkbox"/> UP, DN (C180-360)	0.0, 49.7
LAMPS INSIDE	1	<input type="checkbox"/> up (%)	0.0	CIBSE SHR NOM	0.75
TEST VOLTAGE (V)	120	<input type="checkbox"/> down (%)	100.0	CIBSE SHR MAX	0.75



C Range: 0 - 360DEG
 C Interval: 22.5DEG
 Test Speed: HIGH
 Temperature: 25.3DEG
 Operators:
 Test Date: 2022-6-10

Range: 0 - 90DEG
 Interval: 1.0DEG
 Test System: EVERFINE GO-SPEX500_V1 SYSTEM V2.00.421
 Humidity: 65.0%
 Test Distance: 3.080m [K=1.0000]
 Remarks:

ZONAL FLUX DIAGRAM

ZONAL FLUX DIAGRAM:

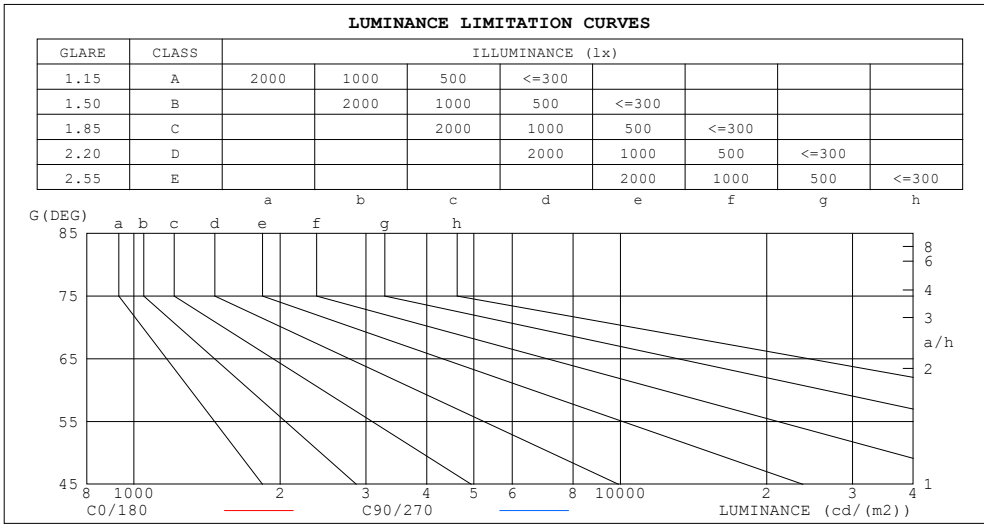
mm	C0	C45	C90	C135	C180	C225	C270	C315	mm	□ zone	□ total	%lum, lamp
10	699.3	732.6	798.8	864.1	883.2	832.5	762.8	717.9	0- 10	77.24	77.24	12.9,12.9
20	440.1	472.8	552.4	632.9	645.0	578.3	504.3	448.7	10- 20	187.2	264.4	44.2,44.2
30	188.1	210.0	260.3	303.9	320.8	280.4	221.9	202.0	20- 30	175.0	439.4	73.4,73.4
40	60.50	65.21	77.08	87.87	90.66	77.45	69.25	64.86	30- 40	90.50	529.9	88.6,88.6
50	25.66	27.62	27.42	29.59	28.95	26.58	25.78	25.27	40- 50	35.07	564.9	94.4,94.4
60	13.10	14.04	12.75	13.21	12.88	12.50	11.93	12.13	50- 60	16.49	581.4	97.2,97.2
70	8.136	8.652	7.427	7.754	7.988	7.886	7.409	7.588	60- 70	10.07	591.5	98.9,98.9
80	3.901	3.436	2.858	2.988	3.592	3.381	3.295	3.529	70- 80	5.741	597.2	99.8,99.8
90	0.0172	0.0127	0.0167	0.0107	0.0239	0.0227	0.0224	0.0191	80- 90	1.127	598.4	100,100
100									90-100			
110									100-110			
120									110-120			
130									120-130			
140									130-140			
150									140-150			
160									150-160			
170									160-170			
180									170-180			
DEG	LUMINOUS INTENSITY:cd									UNIT:lm		

C Range: 0 - 360DEG
 C Interval: 22.5DEG
 Test Speed: HIGH
 Temperature:25.3DEG
 Operators:
 Test Date:2022-6-10

□ Range: 0 - 90DEG
 □ Interval: 1.0DEG
 Test System:EVERFINE GO-SPEX500_V1 SYSTEM V2.00.421
 Humidity:65.0%
 Test Distance:3.080m [K=1.0000]
 Remarks:

LUMINANCE LIMITATION CURVES

Test:U:120.05V I:0.0831A P:9.1470W PF:0.9090 Freq:59.98Hz Lamp Flux:598.369x1 lm		
NAME: LBL-JB10W-5CCT	TYPE:	WEIGHT:
SPEC.:2700K 90	DIM.:	SERIAL No.:
MFR.:	SUR.:	Shielding Angle:



LUMINANCE cd/(m2)		
G (DEG)	C0/180	C90/270
85	27	9
80	204	148
75	209	170
70	216	195
65	217	215
60	237	229
55	281	266
50	362	383
45	499	576

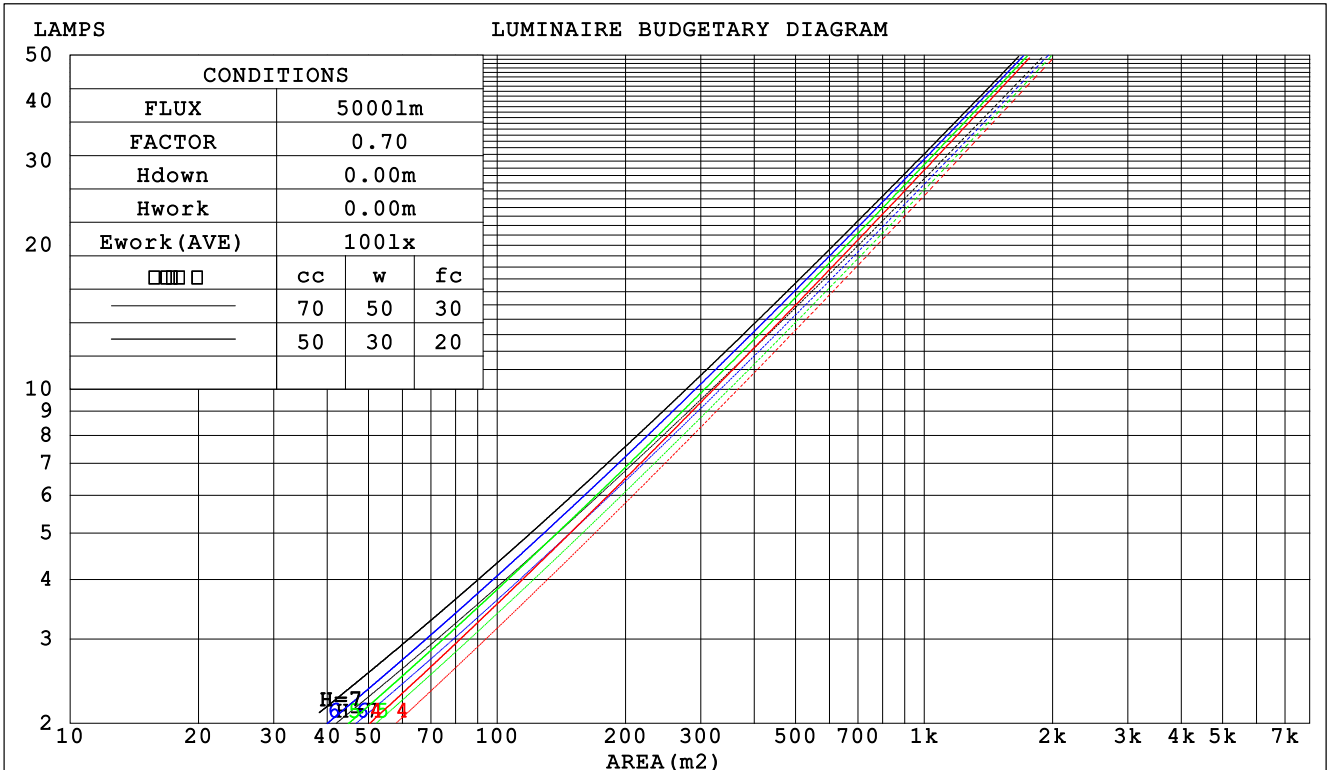
C Range: 0 - 360DEG
 C Interval: 22.5DEG
 Test Speed: HIGH
 Temperature:25.3DEG
 Operators:
 Test Date:2022-6-10

Range: 0 - 90DEG
 Interval: 1.0DEG
 Test System:EVERFINE GO-SPEX500_V1 SYSTEM V2.00.421
 Humidity:65.0%
 Test Distance:3.080m [K=1.0000]
 Remarks:

CU AND LUMINAIRE BUDGETARY ESTIMATE DIAGRAM

Test:U:120.05V I:0.0831A P:9.1470W PF:0.9090 Freq:59.98Hz Lamp Flux:598.369x1 lm		
NAME: LBL-JB10W-5CCT	TYPE:	WEIGHT:
SPEC.:2700K 90	DIM.:	SERIAL No.:
MFR.:	SUR.:	Shielding Angle:

□cc	80%			70%			50%			30%			10%			0
□w	50%	30%	10%	50%	30%	10%	50%	30%	10%	50%	30%	10%	50%	30%	10%	0
□fc	20%			20%			20%			20%			20%			0
RCR	RCR:Room Cavity Ratio						Coefficients of Utilization(CU)									
0.0	1.19	1.19	1.19	1.16	1.16	1.16	1.11	1.11	1.11	1.06	1.06	1.06	1.02	1.02	1.02	.00
1.0	1.10	1.08	1.06	1.08	1.06	1.04	1.04	1.02	1.01	1.00	.99	.98	.97	.96	.95	.93
2.0	1.03	.98	.95	1.01	.97	.94	.98	.94	.92	.95	.92	.90	.92	.90	.88	.86
3.0	.96	.91	.87	.94	.90	.86	.92	.88	.84	.89	.86	.83	.87	.84	.82	.80
4.0	.89	.84	.80	.88	.83	.79	.86	.82	.78	.84	.80	.77	.82	.79	.76	.75
5.0	.84	.78	.74	.83	.78	.73	.81	.76	.73	.80	.75	.72	.78	.74	.72	.70
6.0	.79	.73	.69	.78	.73	.69	.77	.72	.68	.75	.71	.68	.74	.70	.67	.66
7.0	.75	.69	.64	.74	.68	.64	.73	.68	.64	.71	.67	.64	.70	.66	.63	.62
8.0	.71	.65	.61	.70	.64	.61	.69	.64	.60	.68	.63	.60	.67	.63	.60	.58
9.0	.67	.61	.57	.66	.61	.57	.65	.60	.57	.65	.60	.57	.64	.60	.57	.55
10.0	.64	.58	.54	.63	.58	.54	.62	.57	.54	.62	.57	.54	.61	.57	.54	.52



C Range: 0 - 360DEG
 C Interval: 22.5DEG
 Test Speed: HIGH
 Temperature:25.3DEG
 Operators:
 Test Date:2022-6-10

□ Range: 0 - 90DEG
 □ Interval: 1.0DEG
 Test System:EVERFINE GO-SPEX500_V1 SYSTEM V2.00.421
 Humidity:65.0%
 Test Distance:3.080m [K=1.0000]
 Remarks:

WEC AND CCEC

Test:U:120.05V I:0.0831A P:9.1470W PF:0.9090 Freq:59.98Hz Lamp Flux:598.369x1 lm		
NAME: LBL-JB10W-5CCT	TYPE:	WEIGHT:
SPEC.:2700K 90	DIM.:	SERIAL No.:
MFR.:	SUR.:	Shielding Angle:

<input type="checkbox"/> cc	80%			70%			50%			30%			10%			0
<input type="checkbox"/> w	50%	30%	10%	50%	30%	10%	50%	30%	10%	50%	30%	10%	50%	30%	10%	0
<input type="checkbox"/> fc	20%			20%			20%			20%			20%			0
RCR	RCR:Room Cavity Ratio						Wall Exitance Coefficients (WEC)									
0.0																
1.0	.184	.105	.033	.178	.101	.032	.165	.095	.030	.153	.088	.028	.143	.083	.027	
2.0	.175	.096	.029	.170	.093	.029	.159	.088	.027	.149	.084	.026	.140	.079	.025	
3.0	.166	.088	.026	.161	.086	.026	.152	.082	.025	.143	.079	.024	.136	.075	.023	
4.0	.157	.081	.024	.153	.080	.024	.145	.077	.023	.137	.074	.022	.131	.071	.022	
5.0	.148	.076	.022	.145	.074	.022	.138	.072	.021	.132	.069	.021	.126	.067	.020	
6.0	.141	.071	.020	.138	.070	.020	.132	.068	.020	.126	.066	.019	.121	.064	.019	
7.0	.134	.066	.019	.131	.065	.019	.126	.064	.018	.121	.062	.018	.116	.060	.018	
8.0	.128	.062	.018	.125	.062	.017	.121	.060	.017	.116	.059	.017	.112	.058	.017	
9.0	.122	.059	.016	.120	.058	.016	.116	.057	.016	.112	.056	.016	.108	.055	.016	
10.0	.117	.056	.016	.115	.055	.015	.111	.054	.015	.107	.053	.015	.104	.052	.015	

<input type="checkbox"/> cc	80%			70%			50%			30%			10%			0
<input type="checkbox"/> w	50%	30%	10%	50%	30%	10%	50%	30%	10%	50%	30%	10%	50%	30%	10%	0
<input type="checkbox"/> fc	20%			20%			20%			20%			20%			0
RCR	RCR:Room Cavity Ratio						Ceiling Cavity Exitance Coefficients (CCEC)									
0.0	.190	.190	.190	.163	.163	.163	.111	.111	.111	.064	.064	.064	.020	.020	.020	
1.0	.172	.157	.144	.147	.135	.124	.100	.093	.086	.058	.054	.050	.019	.017	.016	
2.0	.157	.132	.112	.134	.114	.097	.092	.079	.068	.053	.046	.040	.017	.015	.013	
3.0	.144	.114	.089	.124	.098	.077	.085	.068	.054	.049	.040	.032	.016	.013	.010	
4.0	.134	.099	.072	.115	.085	.063	.079	.060	.044	.046	.035	.026	.015	.011	.009	
5.0	.125	.087	.059	.108	.076	.052	.074	.053	.036	.043	.031	.022	.014	.010	.007	
6.0	.118	.078	.050	.101	.068	.043	.070	.047	.031	.040	.028	.018	.013	.009	.006	
7.0	.111	.070	.042	.095	.061	.037	.066	.043	.026	.038	.025	.015	.012	.008	.005	
8.0	.105	.064	.036	.090	.056	.031	.063	.039	.022	.036	.023	.013	.012	.008	.004	
9.0	.100	.059	.031	.086	.051	.027	.060	.036	.019	.035	.021	.012	.011	.007	.004	
10.0	.095	.055	.027	.082	.047	.024	.057	.033	.017	.033	.020	.010	.011	.006	.003	

C Range: 0 - 360DEG
 C Interval: 22.5DEG
 Test Speed: HIGH
 Temperature:25.3DEG
 Operators:
 Test Date:2022-6-10

Range: 0 - 90DEG
 Interval: 1.0DEG
 Test System:EVERFINE GO-SPEX500_V1 SYSTEM V2.00.421
 Humidity:65.0%
 Test Distance:3.080m [K=1.0000]
 Remarks:

UGR(Unified Glare Rating) Table

Test:U:120.05V I:0.0831A P:9.1470W PF:0.9090 Freq:59.98Hz Lamp Flux:598.369x1 lm										
NAME: LBL-JB10W-5CCT					TYPE:			WEIGHT:		
SPEC.:2700K 90					DIM.:			SERIAL No.:		
MFR.:					SUR.:			Shielding Angle:		
ceiling/cavity	0.7	0.7	0.5	0.5	0.3	0.7	0.7	0.5	0.5	0.3
walls	0.5	0.3	0.5	0.3	0.3	0.5	0.3	0.5	0.3	0.3
working plane	0.2	0.2	0.2	0.2	0.2	0.2	0.2	0.2	0.2	0.2
Room dimensions	Viewed crosswise					Viewed endwise				
x = 2H y = 2H	6.6	7.6	6.8	7.7	7.9	7.4	8.3	7.6	8.5	8.7
3H	7.2	8.0	7.4	8.2	8.4	7.7	8.6	8.0	8.8	9.0
4H	7.5	8.3	7.7	8.5	8.7	7.9	8.7	8.1	8.9	9.1
6H	7.7	8.5	8.0	8.7	9.0	8.0	8.8	8.3	9.0	9.2
8H	7.7	8.5	8.1	8.8	9.0	8.0	8.7	8.3	9.0	9.3
12H	7.7	8.4	8.0	8.7	9.0	7.9	8.7	8.3	8.9	9.2
4H 2H	6.8	7.6	7.0	7.8	8.0	7.4	8.3	7.7	8.5	8.7
3H	7.5	8.2	7.8	8.5	8.8	8.0	8.7	8.3	9.0	9.2
4H	7.9	8.6	8.3	8.9	9.2	8.2	8.9	8.6	9.2	9.5
6H	8.3	8.9	8.7	9.2	9.6	8.4	9.0	8.8	9.3	9.7
8H	8.4	8.9	8.8	9.3	9.6	8.4	9.0	8.8	9.3	9.7
12H	8.3	8.8	8.8	9.2	9.6	8.4	8.9	8.8	9.2	9.6
8H 4H	8.0	8.6	8.4	8.9	9.3	8.3	8.8	8.7	9.2	9.5
6H	8.5	9.0	9.0	9.4	9.8	8.6	9.0	9.0	9.4	9.8
8H	8.7	9.0	9.1	9.5	9.9	8.6	9.0	9.1	9.4	9.9
12H	8.7	9.0	9.1	9.4	9.9	8.6	8.9	9.0	9.4	9.8
12H 4H	8.0	8.5	8.4	8.9	9.3	8.3	8.8	8.7	9.1	9.5
6H	8.5	8.9	9.0	9.3	9.8	8.6	9.0	9.0	9.4	9.8
8H	8.7	9.0	9.1	9.5	9.9	8.6	9.0	9.1	9.4	9.9
Variations with the observer position at spacings:										
S = 1.0H	+ 0.8 / - 1.0					+ 1.7 / - 1.7				
1.5H	+ 1.4 / - 0.8					+ 3.0 / - 1.4				
2.0H	+ 1.3 / - 0.7					+ 2.1 / - 1.0				

CIE Pub.117, 598.4 lm Total Lamp Luminous Flux Correct (8log(F/F0) = -1.8)
 Area: 0.111111 m2

C Range: 0 - 360DEG
 C Interval: 22.5DEG
 Test Speed: HIGH
 Temperature:25.3DEG
 Operators:
 Test Date:2022-6-10

Range: 0 - 90DEG
 Interval: 1.0DEG
 Test System:EVERFINE GO-SPEX500_V1 SYSTEM V2.00.421
 Humidity:65.0%
 Test Distance:3.080m [K=1.0000]
 Remarks:

UTILIZATION FACTORS TABLE

Test:U:120.05V I:0.0831A P:9.1470W PF:0.9090 Freq:59.98Hz Lamp Flux:598.369x1 lm		
NAME: LBL-JB10W-5CCT	TYPE:	WEIGHT:
SPEC.:2700K 90	DIM.:	SERIAL No.:
MFR.:	SUR.:	Shielding Angle:

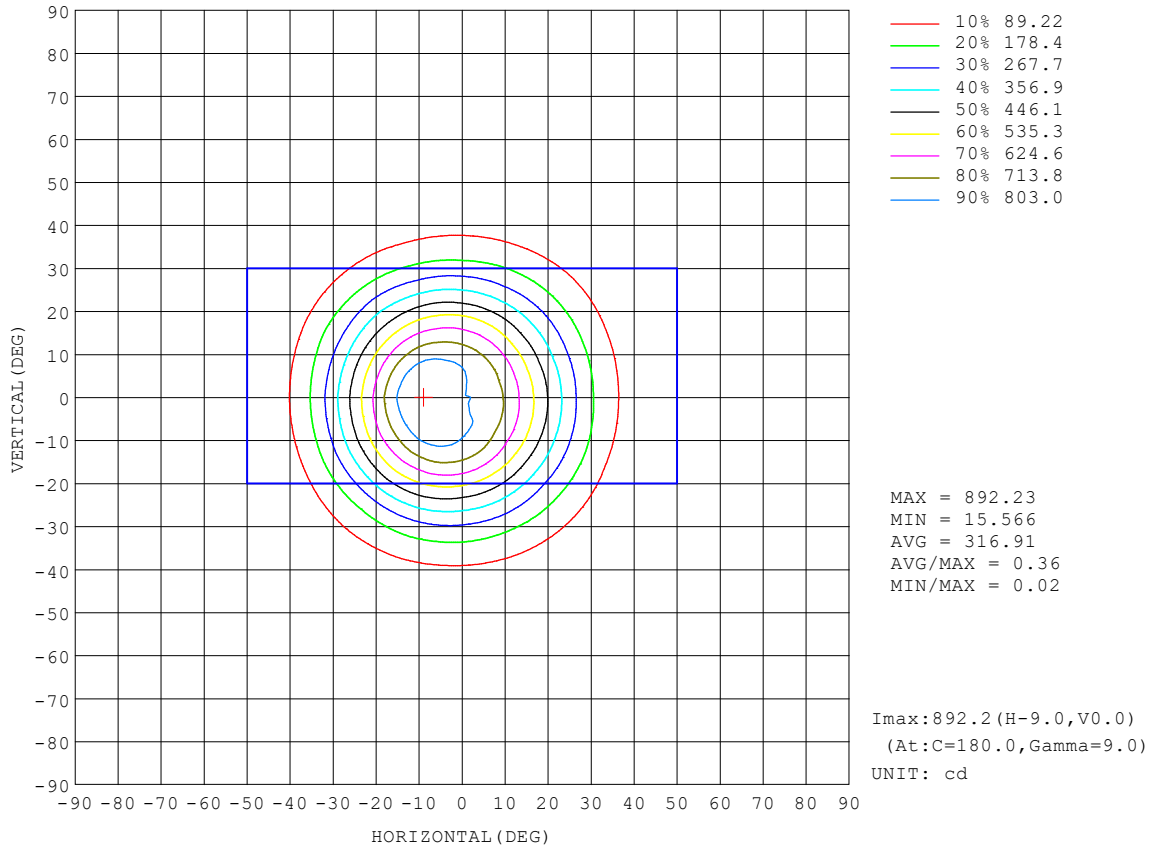
REFLECTANCE										
Ceiling	0.8	0.8	0.8	0.7	0.7	0.7	0.5	0.5	0.5	0
Walls	0.7	0.5	0.3	0.7	0.5	0.3	0.7	0.5	0.3	0
Working plane	0.2	0.2	0.2	0.2	0.2	0.2	0.2	0.2	0.2	0
ROOM INDEX	UTILIZATION FACTORS (PERCENT) $k(RI) \times RCR = 5$									
k = 0.60	84	78	73	84	77	73	83	77	73	69
0.80	92	86	82	91	85	82	90	85	81	77
1.00	97	91	87	96	90	87	94	90	86	82
1.25	101	96	92	100	95	91	98	94	91	86
1.50	104	99	95	103	98	95	101	97	94	89
2.00	107	103	99	106	102	98	103	100	97	92
2.50	109	105	102	108	104	101	104	101	99	93
3.00	111	107	104	109	106	103	106	103	101	94
4.00	113	110	108	111	108	106	107	105	104	96
5.00	114	112	110	112	110	108	108	107	105	98
ROOM INDEX	UF(total)									Direct
According to DIN EN 13032-2 2004			Suspended				SHRNOM = 1.25			

C Range: 0 - 360DEG
 C Interval: 22.5DEG
 Test Speed: HIGH
 Temperature:25.3DEG
 Operators:
 Test Date:2022-6-10

Range: 0 - 90DEG
 Interval: 1.0DEG
 Test System:EVERFINE GO-SPEX500_V1 SYSTEM V2.00.421
 Humidity:65.0%
 Test Distance:3.080m [K=1.0000]
 Remarks:

ISOCANDELA DIAGRAM

Test:U:120.05V I:0.0831A P:9.1470W PF:0.9090 Freq:59.98Hz Lamp Flux:598.369x1 lm		
NAME: LBL-JB10W-5CCT	TYPE:	WEIGHT:
SPEC.:2700K 90	DIM.:	SERIAL No.:
MFR.:	SUR.:	Shielding Angle:

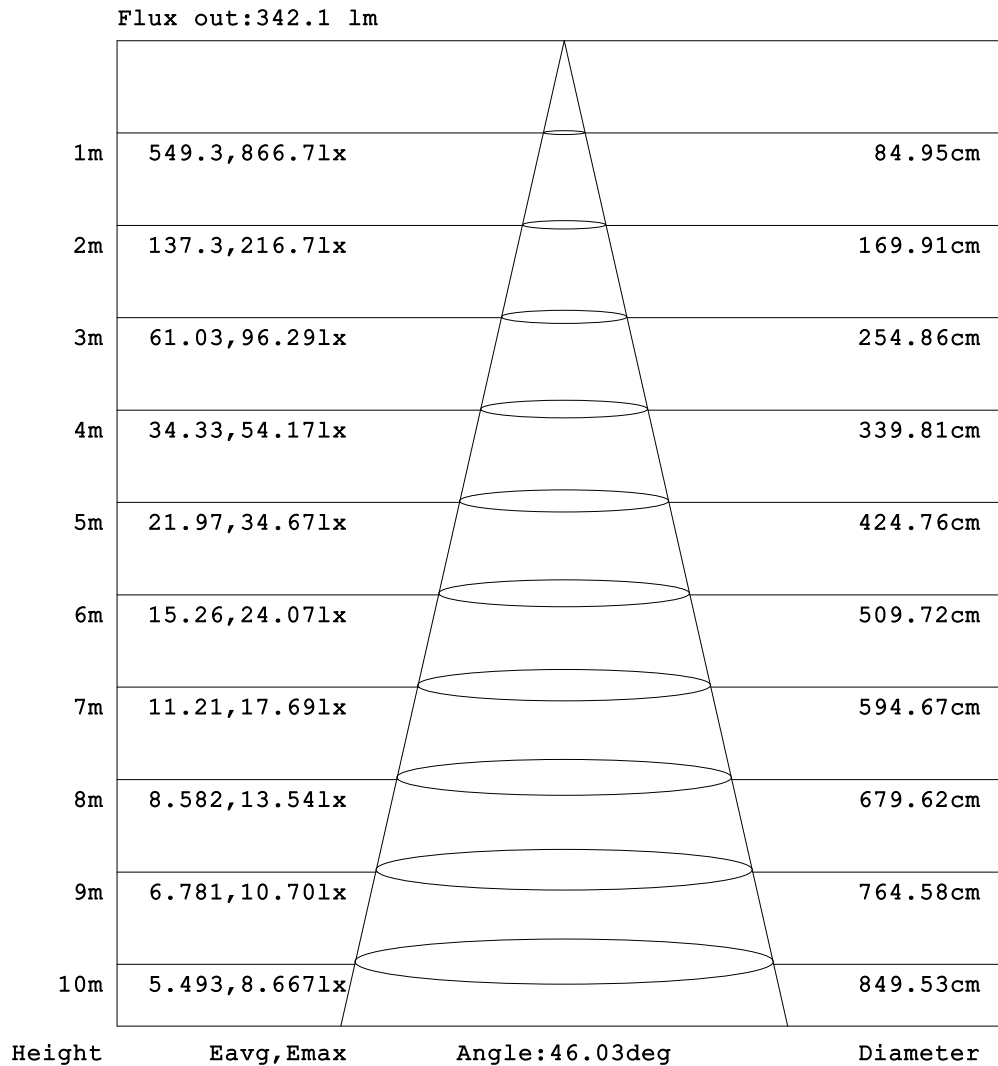


C Range: 0 - 360DEG
 C Interval: 22.5DEG
 Test Speed: HIGH
 Temperature:25.3DEG
 Operators:
 Test Date:2022-6-10

Range: 0 - 90DEG
 Interval: 1.0DEG
 Test System:EVERFINE GO-SPEX500_V1 SYSTEM V2.00.421
 Humidity:65.0%
 Test Distance:3.080m [K=1.0000]
 Remarks:

AAI Figure

Test:U:120.05V I:0.0831A P:9.1470W PF:0.9090 Freq:59.98Hz Lamp Flux:598.369x1 lm		
NAME: LBL-JB10W-5CCT	TYPE:	WEIGHT:
SPEC.:2700K 90	DIM.:	SERIAL No.:
MFR.:	SUR.:	Shielding Angle:



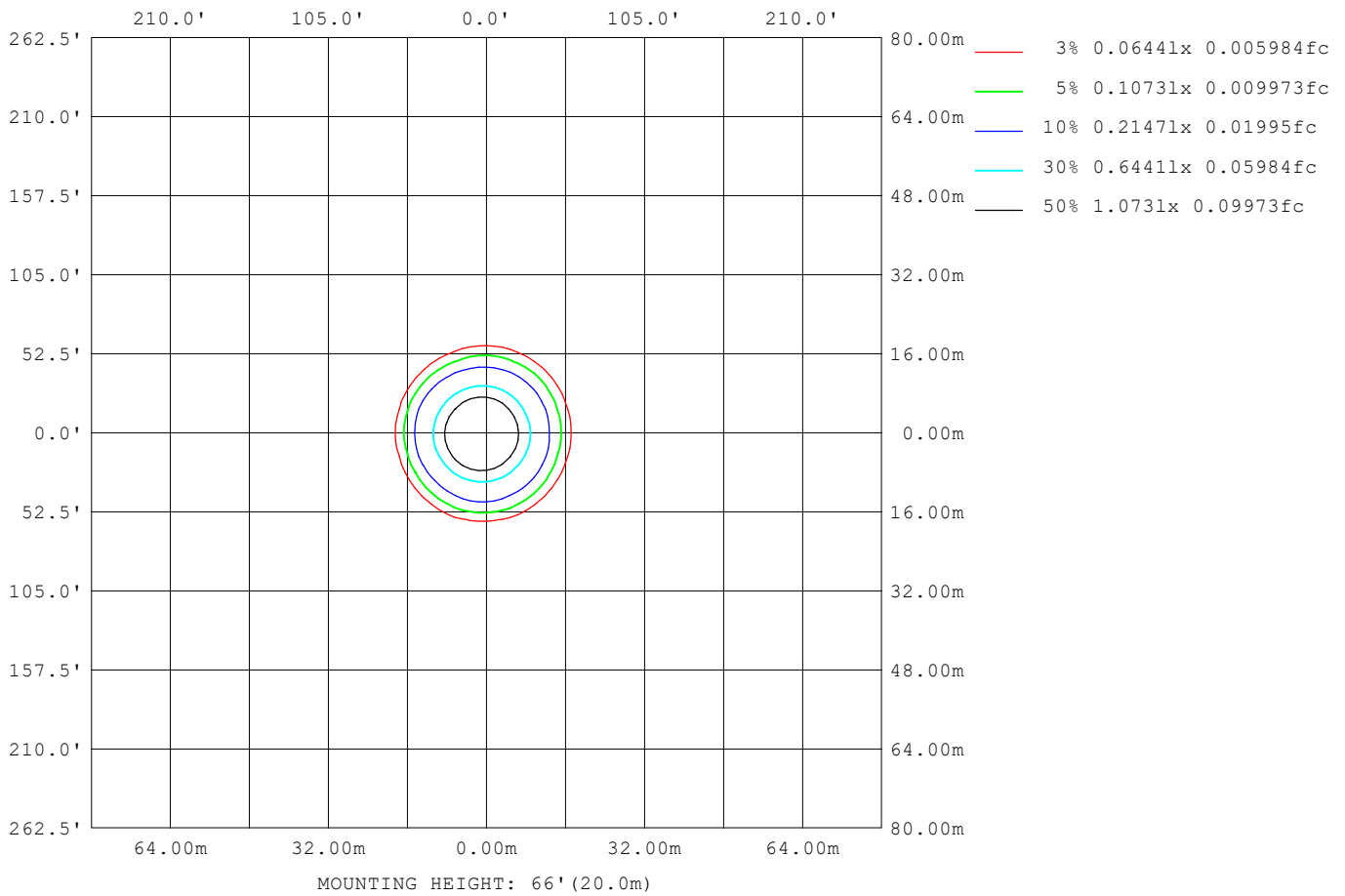
Note:The Curves indicate the illuminated area and the average illumination when the luminaire is at different distance.

C Range: 0 - 360DEG
 C Interval: 22.5DEG
 Test Speed: HIGH
 Temperature:25.3DEG
 Operators:
 Test Date:2022-6-10

Range: 0 - 90DEG
 Interval: 1.0DEG
 Test System:EVERFINE GO-SPEX500_V1 SYSTEM V2.00.421
 Humidity:65.0%
 Test Distance:3.080m [K=1.0000]
 Remarks:

ISOLUX DIAGRAM

Test:U:120.05V I:0.0831A P:9.1470W PF:0.9090 Freq:59.98Hz Lamp Flux:598.369x1 lm		
NAME: LBL-JB10W-5CCT	TYPE:	WEIGHT:
SPEC.:2700K 90	DIM.:	SERIAL No.:
MFR.:	SUR.:	Shielding Angle:



C Range: 0 - 360DEG
 C Interval: 22.5DEG
 Test Speed: HIGH
 Temperature:25.3DEG
 Operators:
 Test Date:2022-6-10

Range: 0 - 90DEG
 Interval: 1.0DEG
 Test System:EVERFINE GO-SPEX500_V1 SYSTEM V2.00.421
 Humidity:65.0%
 Test Distance:3.080m [K=1.0000]
 Remarks:

LED Avg.L Report

Test:U:120.05V I:0.0831A P:9.1470W PF:0.9090 Freq:59.98Hz Lamp Flux:598.369x1 lm		
NAME: LBL-JB10W-5CCT	TYPE:	WEIGHT:
SPEC.:2700K 90	DIM.:	SERIAL No.:
MFR.:	SUR.:	Shielding Angle:

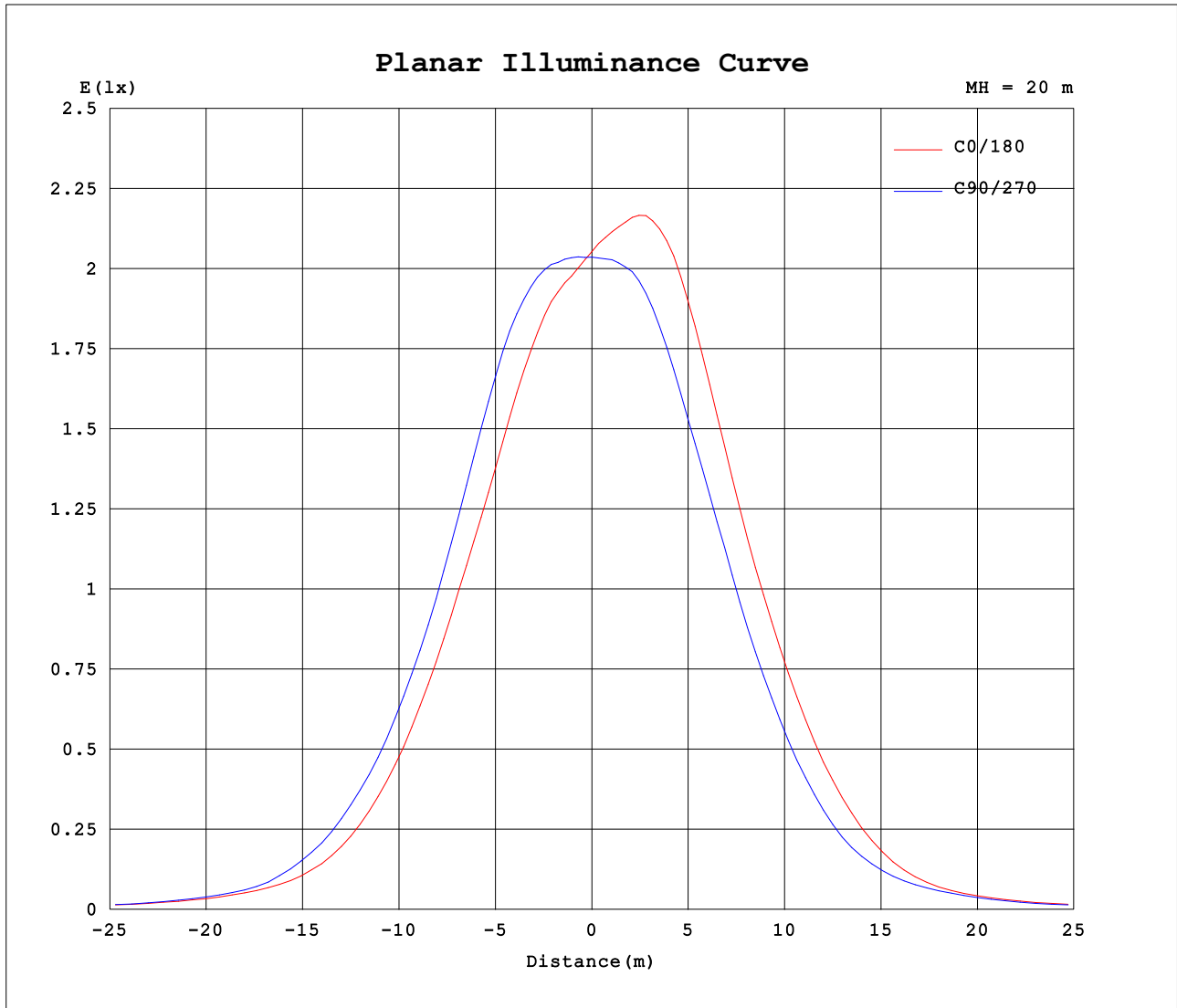
AvgL	cd/m2
L_0~180 (65) av	219
L_0~180 (75) av	201
L_0~180 (85) av	29
L_90~270 (65) av	210
L_90~270 (75) av	175
L_90~270 (85) av	11
L_45 (65) av	222
L_45 (75) av	188
L_45 (85) av	39

Standard: GB/T 29293-2012

C Range: 0 - 360DEG
 C Interval: 22.5DEG
 Test Speed: HIGH
 Temperature:25.3DEG
 Operators:
 Test Date:2022-6-10

Range: 0 - 90DEG
 Interval: 1.0DEG
 Test System:EVERFINE GO-SPEX500_V1 SYSTEM V2.00.421
 Humidity:65.0%
 Test Distance:3.080m [K=1.0000]
 Remarks:

Planar Illuminance Curve



C Range: 0 - 360DEG
 C Interval: 22.5DEG
 Test Speed: HIGH
 Temperature: 25.3DEG
 Operators:
 Test Date: 2022-6-10

Range: 0 - 90DEG
 Interval: 1.0DEG
 Test System: EVERFINE GO-SPEX500_V1 SYSTEM V2.00.421
 Humidity: 65.0%
 Test Distance: 3.080m [K=1.0000]
 Remarks:

LUMINOUS DISTRIBUTION INTENSITY DATA

Test:U:120.05V I:0.0831A P:9.1470W PF:0.9090 Freq:59.98Hz Lamp Flux:598.369x1 lm		
NAME: LBL-JB10W-5CCT	TYPE:	WEIGHT:
SPEC.:2700K 90	DIM.:	SERIAL No.:
MFR.:	SUR.:	Shielding Angle:

Table--1

UNIT: cd

C (DEG) □ (DEG)	0	22.5	45	67.5	90	112.5	135	157.5	180	202.5	225	247.5	270	292.5	315	337.5			
0	816	816	816	816	816	816	816	816	816	816	816	816	816	816	816	816			
5	775	779	791	804	819	836	853	861	862	857	847	831	813	797	785	777			
10	699	712	733	767	799	834	864	880	883	866	832	792	763	737	718	704			
15	574	590	615	659	705	747	782	797	803	774	732	682	647	617	592	578			
20	440	452	473	508	552	597	633	654	645	615	578	539	504	475	449	437			
25	304	315	333	364	397	436	469	485	480	454	420	385	356	332	318	305			
30	188	202	210	236	260	284	304	323	321	298	280	242	222	209	202	191			
35	104	108	123	135	152	166	168	183	185	180	156	131	121	117	114	108			
40	60.5	61.4	65.2	73.3	77.1	85.4	87.9	87.0	90.7	87.4	77.5	70.2	69.3	66.3	64.9	62.0			
45	38.9	39.5	41.3	42.7	45.3	48.5	49.1	49.3	48.5	47.4	45.6	42.2	43.1	41.3	40.2	39.2			
50	25.7	26.1	27.6	27.0	27.4	28.5	29.6	30.1	28.9	27.1	26.6	26.1	25.8	24.9	25.3	25.0			
55	17.8	18.4	19.6	17.3	17.0	17.4	19.6	20.3	18.7	17.3	17.3	16.9	16.9	16.7	17.2	17.6			
60	13.1	13.5	14.0	12.8	12.8	12.9	13.2	13.7	12.9	12.2	12.5	11.9	11.9	11.9	12.1	12.6			
65	10.1	10.3	11.3	10.1	10.1	10.1	10.4	10.8	10.4	9.86	10.3	9.68	9.62	9.60	9.66	9.90			
70	8.14	8.17	8.65	7.50	7.43	7.36	7.75	8.25	7.99	7.48	7.89	7.46	7.41	7.44	7.59	7.85			
75	5.96	5.83	5.69	5.01	4.90	4.82	5.08	5.61	5.58	5.20	5.39	5.21	5.18	5.26	5.44	5.69			
80	3.90	3.58	3.44	2.99	2.86	2.86	2.99	3.37	3.59	3.34	3.38	3.28	3.30	3.37	3.53	3.73			
85	0.26	1.08	0.28	0.09	0.08	0.08	0.15	0.91	0.31	1.37	0.52	0.13	0.12	0.14	0.58	1.71			
90	0.02	0.01	0.01	0.01	0.02	0.01	0.01	0.01	0.02	0.02	0.02	0.02	0.02	0.02	0.02	0.02			

C Range: 0 - 360DEG
 C Interval: 22.5DEG
 Test Speed: HIGH
 Temperature:25.3DEG
 Operators:
 Test Date:2022-6-10

□ Range: 0 - 90DEG
 □ Interval: 1.0DEG
 Test System:EVERFINE GO-SPEX500_V1 SYSTEM V2.00.421
 Humidity:65.0%
 Test Distance:3.080m [K=1.0000]
 Remarks: